

FOR LEASE

5805 - 5831 Lacey Blvd SE
Lacey, WA 98503



LACEY DOWNS PLAZA

Patric Grissom

First Western Properties—Tacoma Inc. | 253.472.0404
6402 Tacoma Mall Blvd, Tacoma, WA 98409 | fwp-inc.com

5805 - 5831 LACEY BLVD SE

AVAILABLE

BUILDING	SUITE	SF	RATE PSF
5105	PAD	6,106	\$20.00 PSF, NNN
5831	G	1,461 SF	\$20.00 PSF, NNN
5828	A	2,480 SF	\$20.00 PSF, NNN

NNN FOR 2024: \$6.36 PSF



NEARBY TENANTS



CUTTERS POINT
COFFEE CO.



PAINTING WITH A
Twist



SUMMARY



Population



Average HH Income

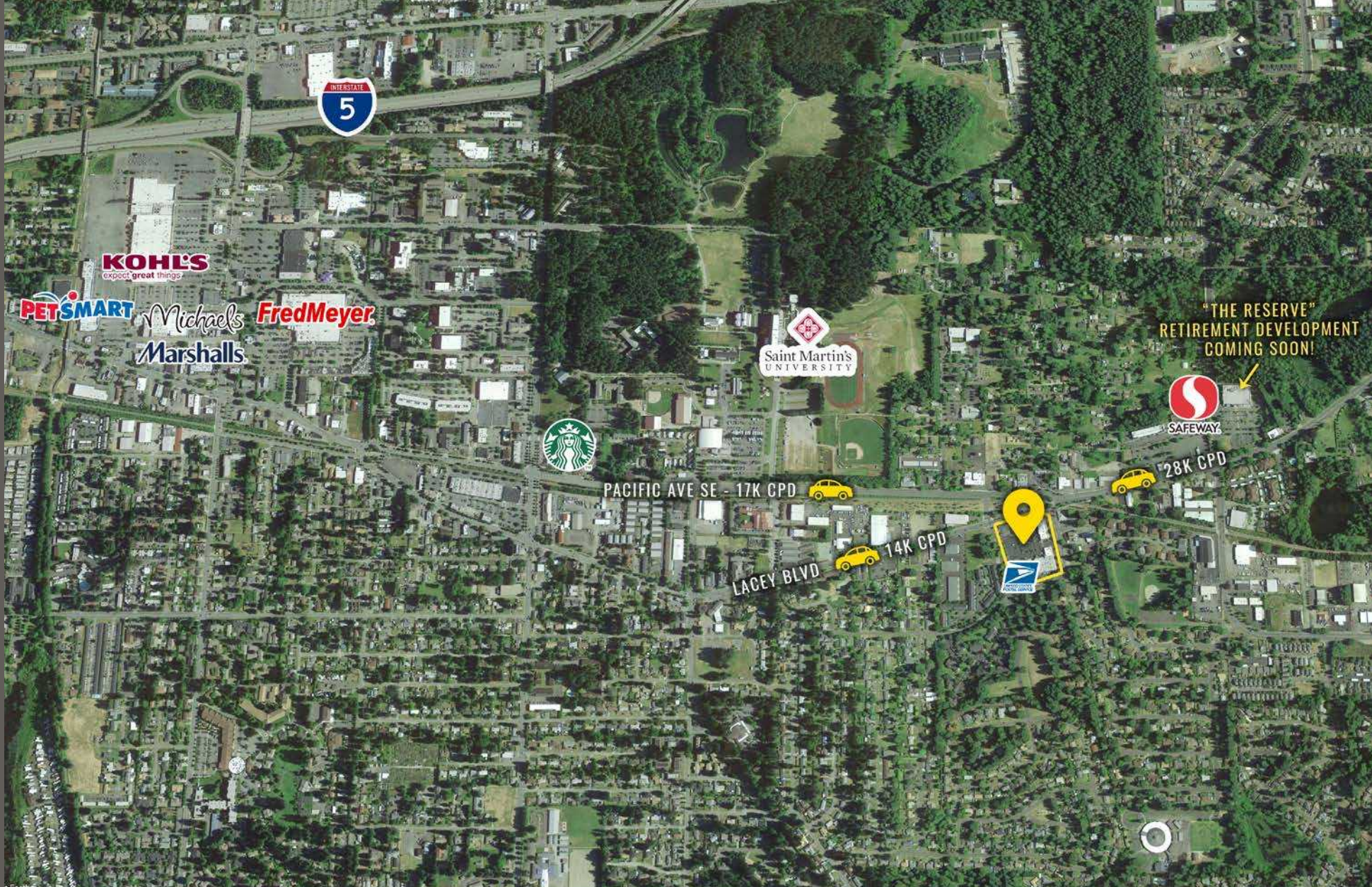


Daytime Population

Regis - 2023

Mile 1	10,424	\$97,096	8,845
Mile 3	79,580	\$107,248	48,805
Mile 5	151,095	\$116,293	101,603

LOCATION DETAILS



Easy Ingress
and Egress



High Volume
Co-tenant

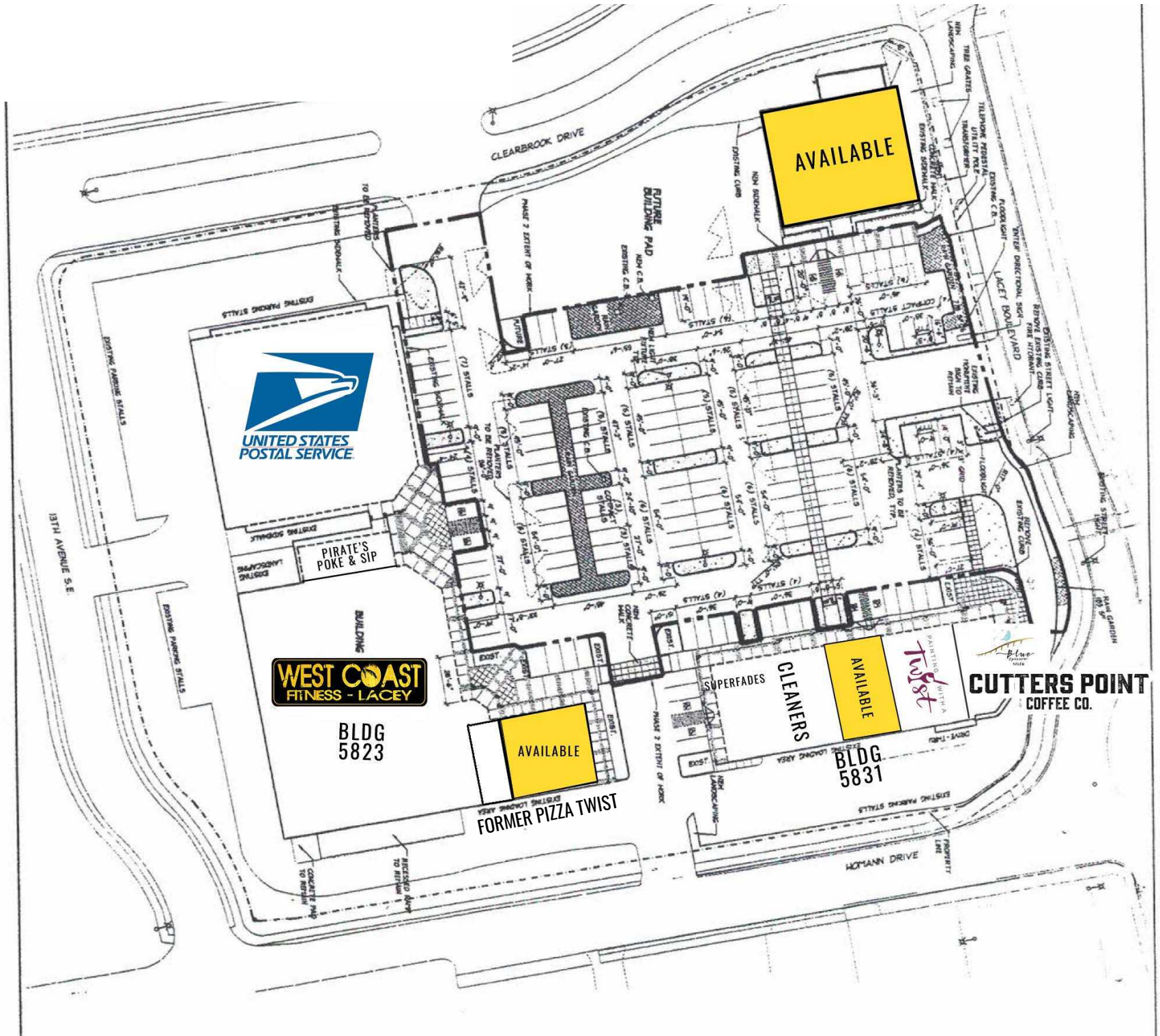


14,000 CPD
Lacey Blvd

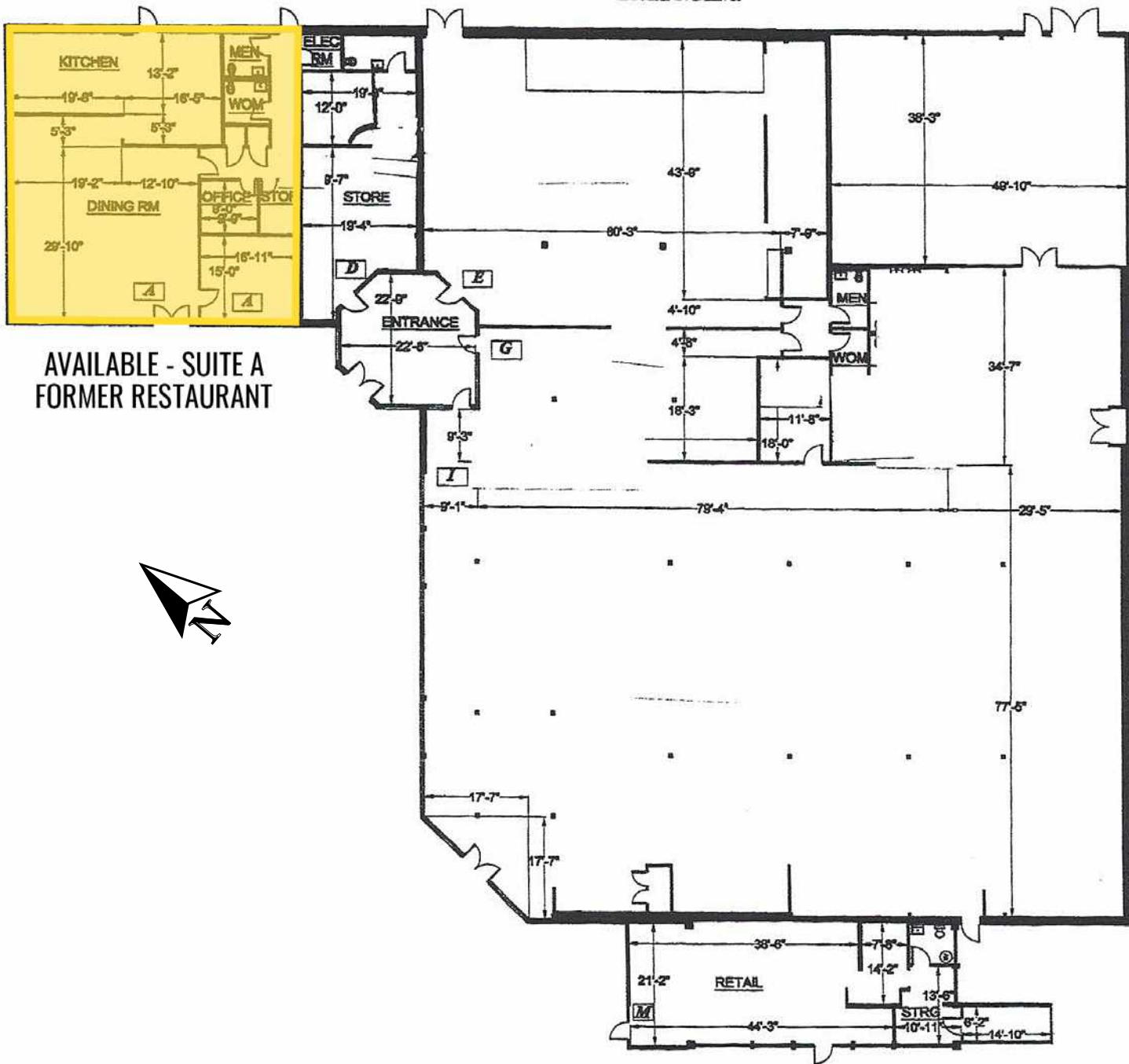


28,000 CPD
Pacific Ave SE

SITE PLAN OVERVIEW



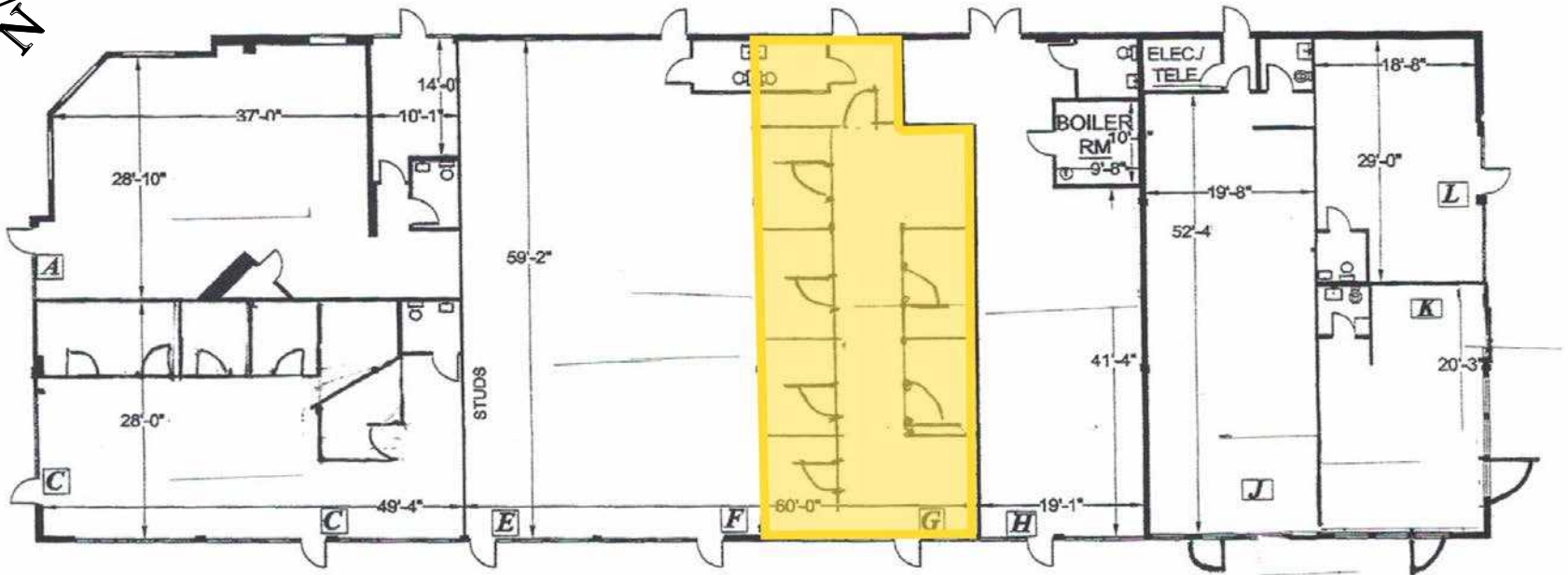
FLOOR PLANS SUITE A





HOMANN DRIVE SE

LACEY BLVD SE



AVAILABLE - SUITE G



TACOMA | KIRKLAND | PORTLAND | SEATTLE



RELATIONSHIP FOCUSED. RESULTS DRIVEN

PATRIC GRISSOM

253.284.3635

pgrissom@firstwesternproperties.com



First Western Properties—Tacoma Inc. | 253.472.0404
6402 Tacoma Mall Blvd, Tacoma, WA 98409 | fwp-inc.com

© First Western Properties, Inc. DISCLAIMER: The above information has been secured from sources believed to be reliable, however, no representations are made to its accuracy. Prospective tenants or buyers should consult their professional advisors and conduct their own independent investigation. Properties are subject to change in price and/or availability without notice.