



**FOR
LEASE**

Seattle South Business Park, Bldg 1

18264 / 18300 / 18340 Southcenter Pkwy | Tukwila, WA



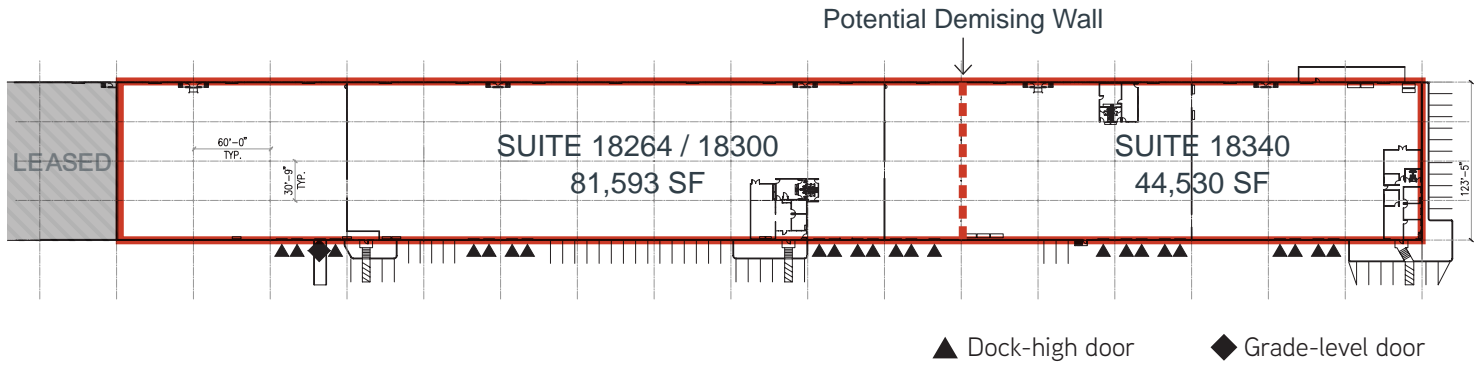
126,123 Square Feet Available

- Divisible to 44,530 SF or 81,593 SF
- 5,244 SF total of office
- 23 dock-high doors
- 1 grade-level door
- 24' clear height
- Quick and easy access to I-5, I-405 and SR 167
- 10 minutes to Sea-Tac Airport
- Only minutes to Southcenter retail
- Call for asking rates

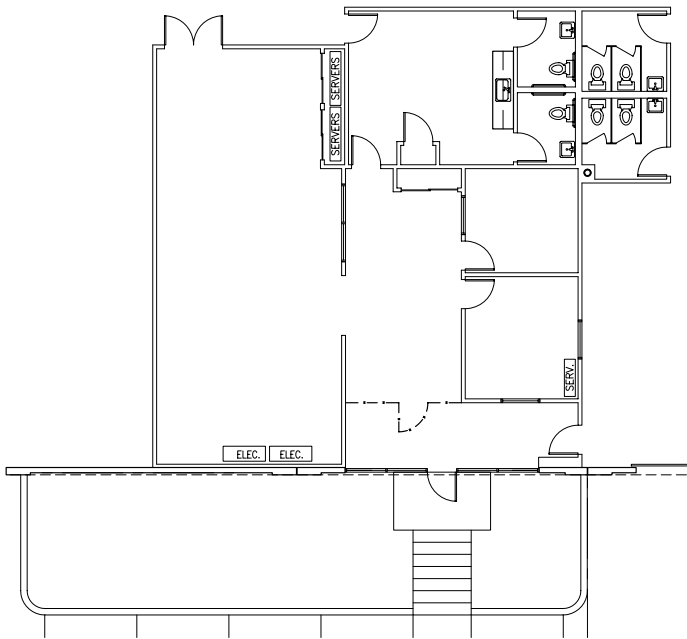
Seattle South Business Park, Building 1

18264 / 18300 / 18340 Southcenter Pkwy | Tukwila, WA

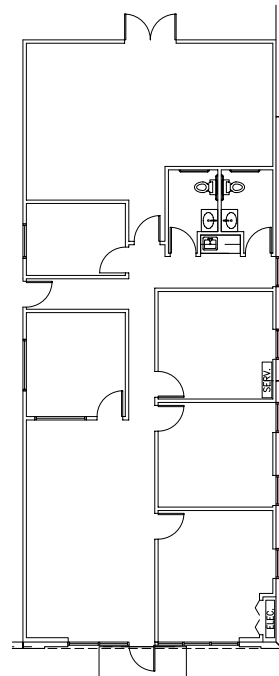
1st Floor Plan



18264 / 18300 Office Plan



18340 Office Plan



For more information on this opportunity, please contact



Matt McGregor, SIOR
+1 206 624 7401
matt.mcgregor@colliers.com

Bill Condon, SIOR
+1 206 235 9732
bill.condon@colliers.com

This information contained herein was obtained from sources deemed reliable and is believed to be true. It has not been verified and as such, cannot be warranted nor form any part of any future contract.