



**FOR
LEASE**

Seattle South Business Park, Bldg 3

18340 Segale Park Dr B | Seattle, WA



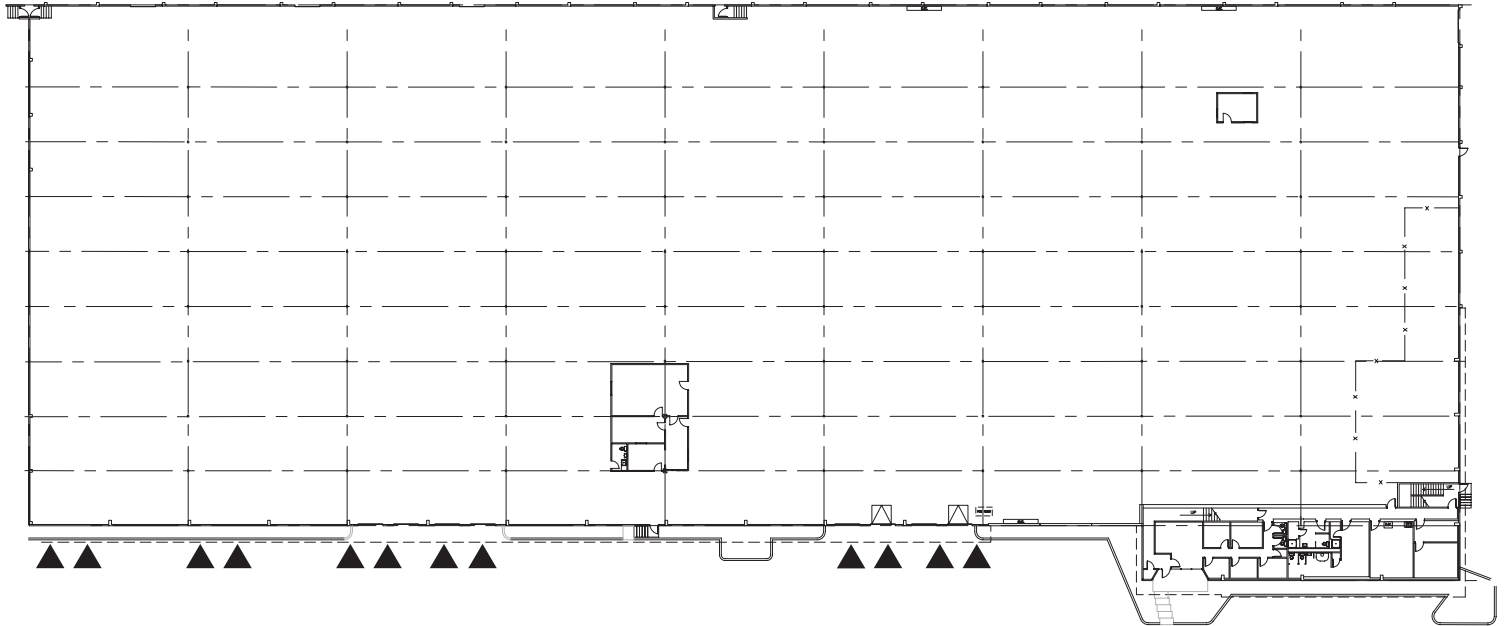
103,929 Square Feet Available

- 4,506 SF first floor office and 2,429 SF second floor office
- 27' clear height
- 12 dock-high doors
- 2,000 amp switchgear with 1,200 sub feed
- Quick and easy access to Interstate 5, Interstate 405, and SR-167
- 10 minutes to Sea-Tac Airport
- Only minutes to Southcenter retail
- Call for asking rate

Seattle South Business Park, Building 3

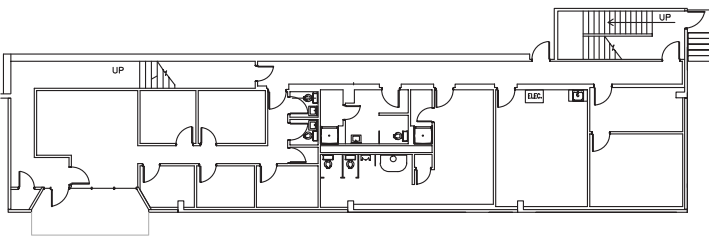
18340 Segale Park Dr B | Seattle, WA

1st Floor Plan

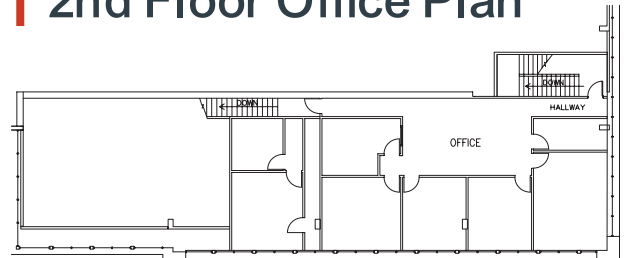


▲ Dock-high door

1st Floor Office Plan



2nd Floor Office Plan



For more information on this opportunity, please contact



Matt McGregor, SIOR
+1 206 624 7401
matt.mcgregor@colliers.com

Bill Condon, SIOR
+1 206 235 9732
bill.condon@colliers.com

This information contained herein was obtained from sources deemed reliable and is believed to be true. It has not been verified and as such, cannot be warranted nor form any part of any future contract.