



**FOR  
LEASE**

## Seattle South Business Park, Bldg 5

18285 Andover Park W | Tukwila, WA



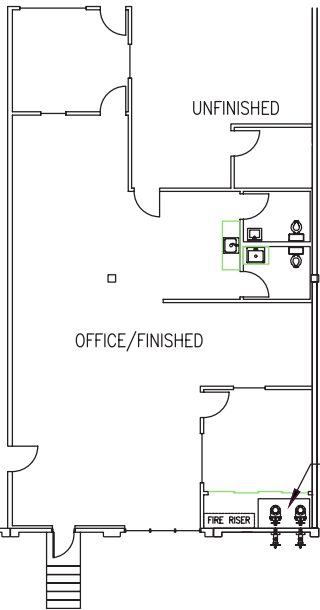
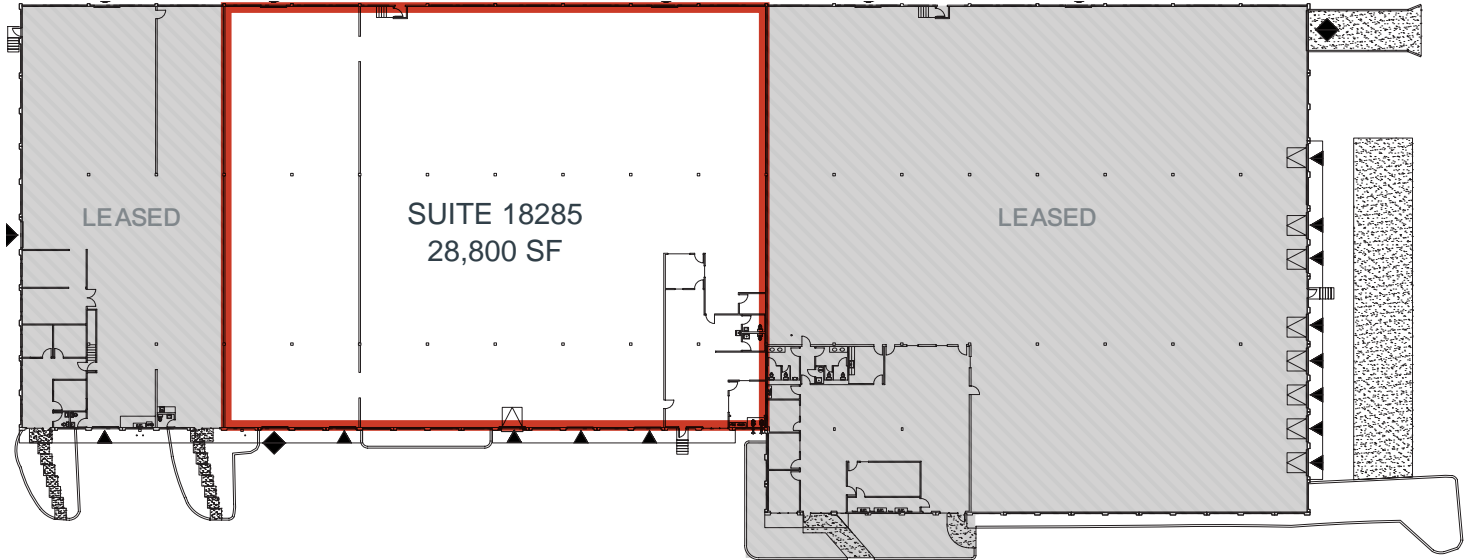
### 28,800 Square Feet Available

- 1,701 SF office
- 4 dock-high doors
- 1 grade-level door
- 24' clear height
- Quick and easy access to I-5, I-405 and SR 167
- 10 minutes to Sea-Tac Airport
- Only minutes to Southcenter retail
- Call for asking rates

# Seattle South Business Park, Building 5

18285 Andover Park W | Tukwila, WA

## Floor Plan



## Office Plan



For more information on this opportunity, please contact



**Matt McGregor, SIOR**  
+1 206 624 7401  
matt.mcgregor@colliers.com

**Bill Condon, SIOR**  
+1 206 235 9732  
bill.condon@colliers.com

This information contained herein was obtained from sources deemed reliable and is believed to be true. It has not been verified and as such, cannot be warranted nor form any part of any future contract.