

AVAILABLE FOR LEASE

# FIRST HILL

P O R T F O L I O

600 BROADWAY / SEATTLE, WA

CBRE Healthpeak® | DOC LISTED NYSE

# 600 Broadway

## Building Highlights

130,848 RSF Class A Medical Office Building

New Lobby and Exterior Improvements  
Completed in 2023

New Common Areas, Elevators & Restrooms

New Spec Clinic Space Ready for Occupancy

Connected to Swedish Hospital via tunnel

Dedicated 355-stall parking garage

On-Site Café & Nearby Amenities



# 600 Broadway

## Availabilities



SUITE	SIZE (±RSF)	AVAILABLE
260	8,959	Now
304	6,857	Now
490*	3,846	Now
510	2,115	Now
610	8,706	Now

\*Class A Spec Suite \*\*Can be combined

# Location Map



Walker's Paradise

97



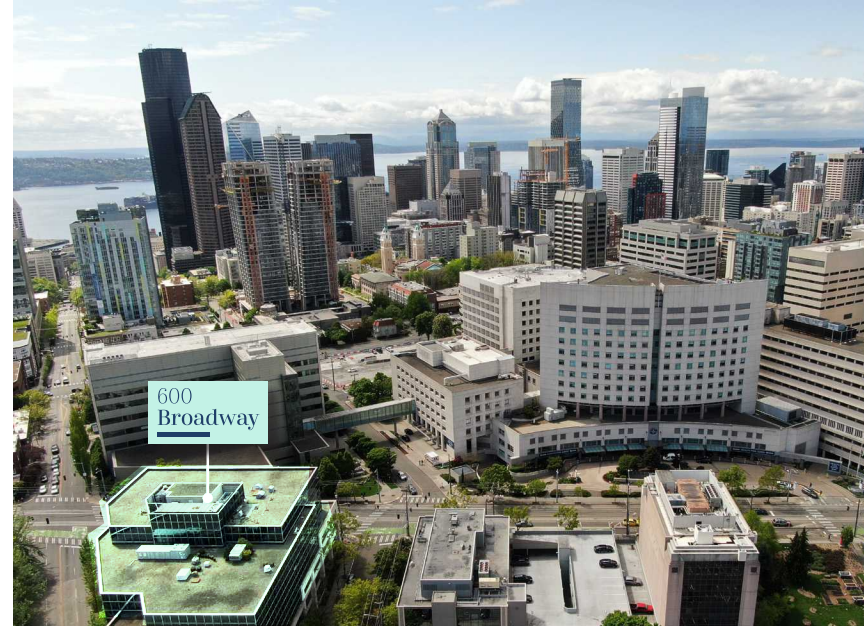
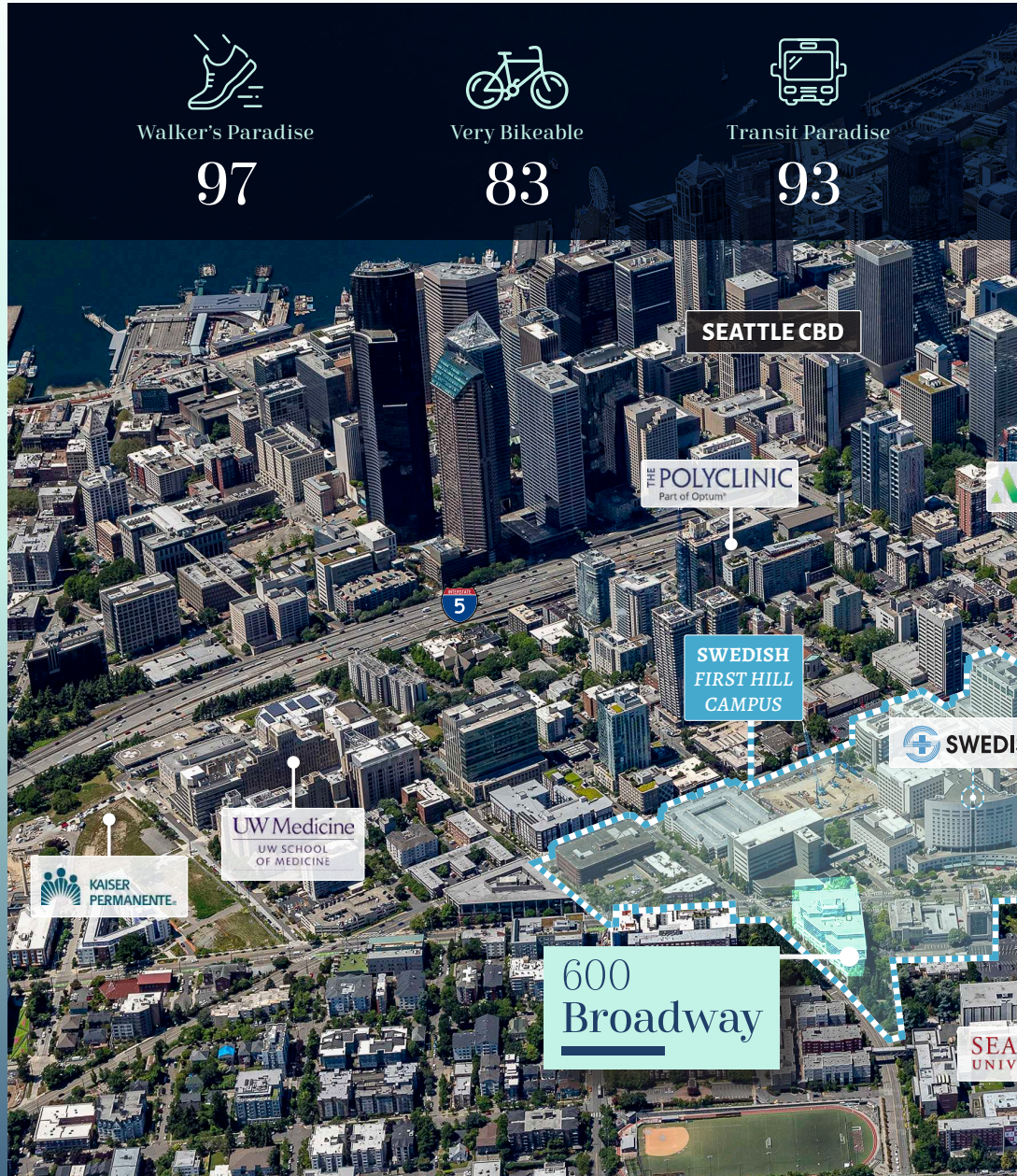
Very Bikeable

83



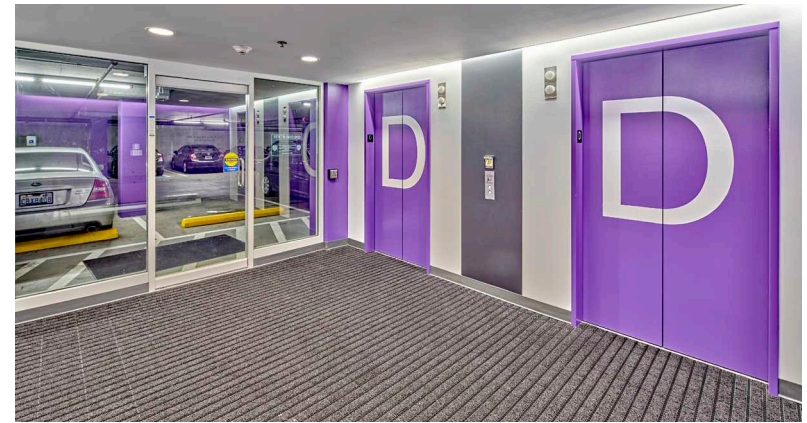
Transit Paradise

93



# 600 Broadway

New Common Area + Elevators



# 600 Broadway

New Spec Suites



# FIRST HILL

P O R T F O L I O

600 BROADWAY / SEATTLE, WA

600 BROADWAY

## For More Information

### MARCUS YAMAMOTO

Senior Vice President | [marcus.yamamoto@cbre.com](mailto:marcus.yamamoto@cbre.com) | +1 206 292 6062

### KATIE SMITH

Senior Associate | [katie.m.smith@cbre.com](mailto:katie.m.smith@cbre.com) | +1 206 292 6012

[seattle.medicaloffice.info](http://seattle.medicaloffice.info)

**CBRE** Healthpeak® | DOC LISTED NYSE

© 2024 CBRE, Inc. All rights reserved. This information has been obtained from sources believed reliable but has not been verified for accuracy or completeness. CBRE, Inc. makes no guarantee, representation or warranty and accepts no responsibility or liability as to the accuracy, completeness, or reliability of the information contained herein. You should conduct a careful, independent investigation of the property and verify all information. Any reliance on this information is solely at your own risk. CBRE and the CBRE logo are service marks of CBRE, Inc. All other marks displayed on this document are the property of their respective owners, and the use of such marks does not imply any affiliation with or endorsement of CBRE. Photos herein are the property of their respective owners. Use of these images without the express written consent of the owner is prohibited. PMStudio\_June2024