



CLARION PARTNERS

For Lease

Southcenter South Industrial  
Park, Glacier Building

6540 South Glacier Street  
Tukwila, WA 98188

26,114 Square Feet Available



### BUILDING HIGHLIGHTS

- 26,114 SF total with 2,735 SF first floor office
- 3 dock-high doors
- 1 grade-level door
- 24' clear height
- Strong corporate image
- Quick and easy access to Interstate 5, Interstate 405, and SR-167
- 10 minutes to SeaTac Airport
- Only minutes to Southcenter retail
- Call for asking rates

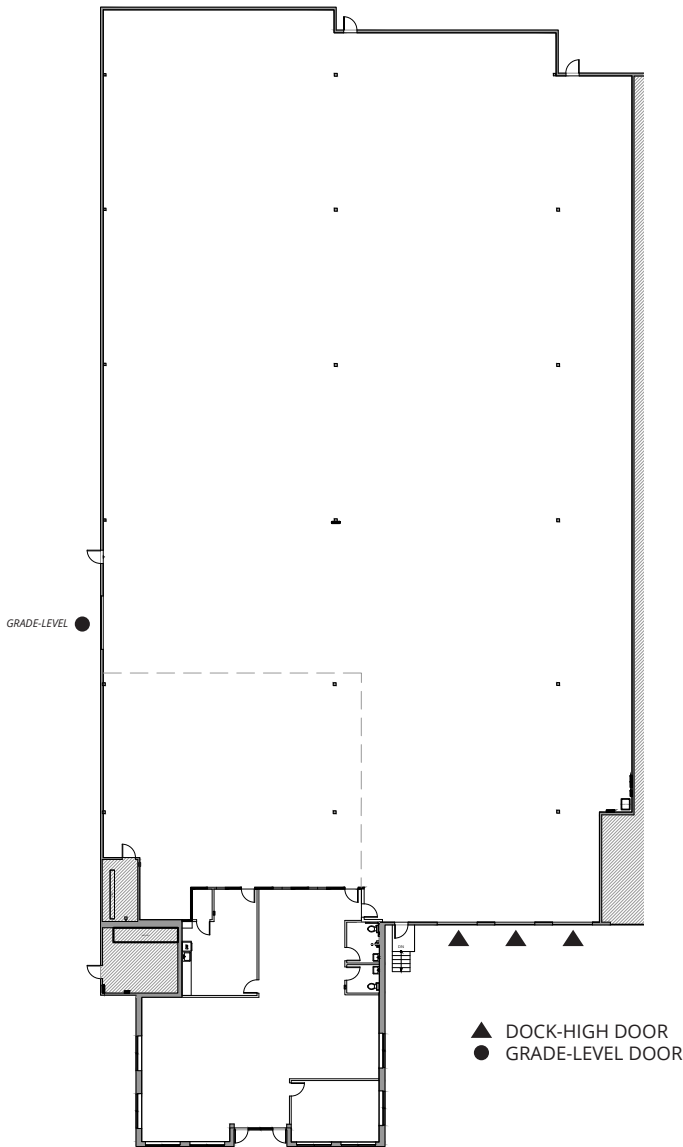




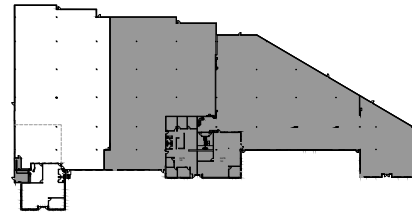
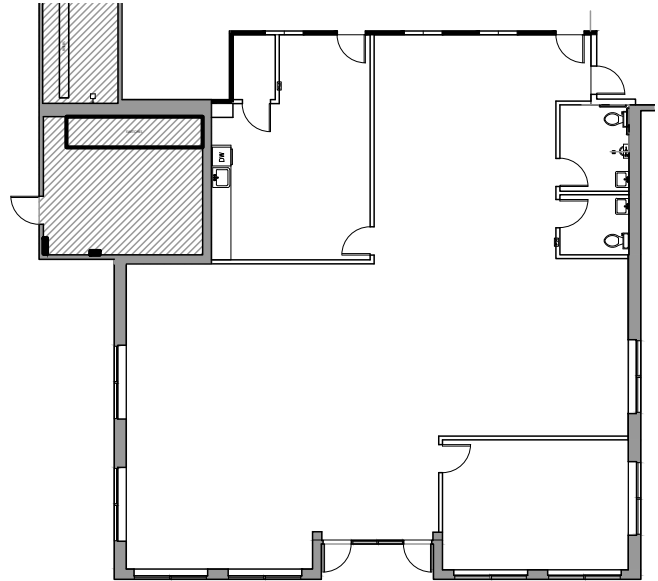
# CLARION PARTNERS

Southcenter South Industrial Park

## FLOOR PLAN



## OFFICE PLAN



## CLARION PARTNERS

[www.clarionpartners.com](http://www.clarionpartners.com)

For more information on this opportunity, please contact



MATT MCGREGOR, SIOR  
+1 206 624 7401  
[matt.mcgregor@colliers.com](mailto:matt.mcgregor@colliers.com)

BILL CONDON, SIOR  
+1 206 235 9732  
[bill.condon@colliers.com](mailto:bill.condon@colliers.com)

- > Only minutes to retail including restaurants, shopping and theaters
- > ±6 miles / ±14 minutes to SeaTac Airport
- > ±15 miles / ±22 minutes to downtown Seattle
- > ±16 miles / ±26 minutes to Port of Seattle
- > ±20 miles / ±28 minutes to Port of Tacoma