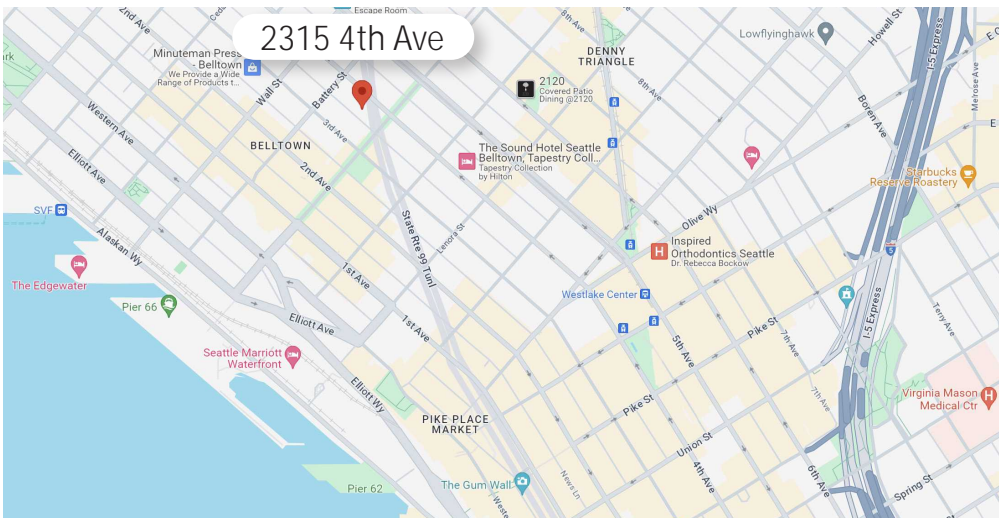


# FOR LEASE

RETAIL SPACE | THE CONFIDENTIAL APTS  
2315 4TH AVENUE | SEATTLE, 98121



## PROPERTY FEATURES

- Excellent retail and restaurant spaces located at the base of the brand-new Confidential Apartment tower with 29 floors, 212 apartment units and additional office space above.
- Four retail spaces ranging in size from 1,119 SF to 2,645 SF. Ability to combine spaces as well.
- Building completion late summer 2024.
- **\$35.00 SF/YR + NNN**
- Please call brokers for more information and to arrange tours.



CAMERON  
KENT

206.838.7737  
ckent@ewingandclark.com

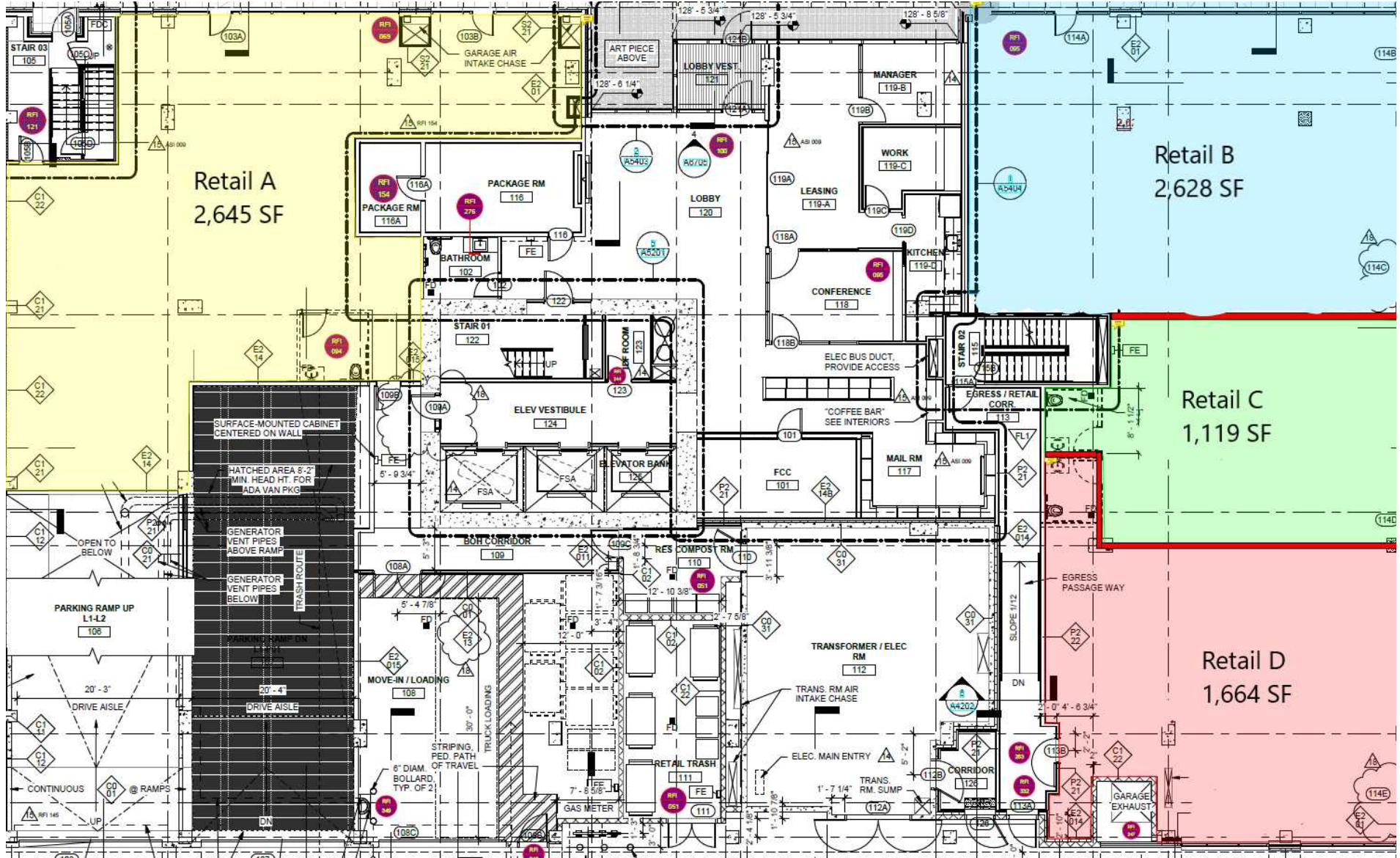
TOM  
GRAFF

206.295.1445  
tomgraff@ewingandclark.com

# FLOOR PLAN

2315 4TH AVENUE | SEATTLE, 98121

4TH AVENUE



BELL STREET

# PHOTOS

2315 4TH AVENUE | SEATTLE, 98121



CAMERON  
KENT

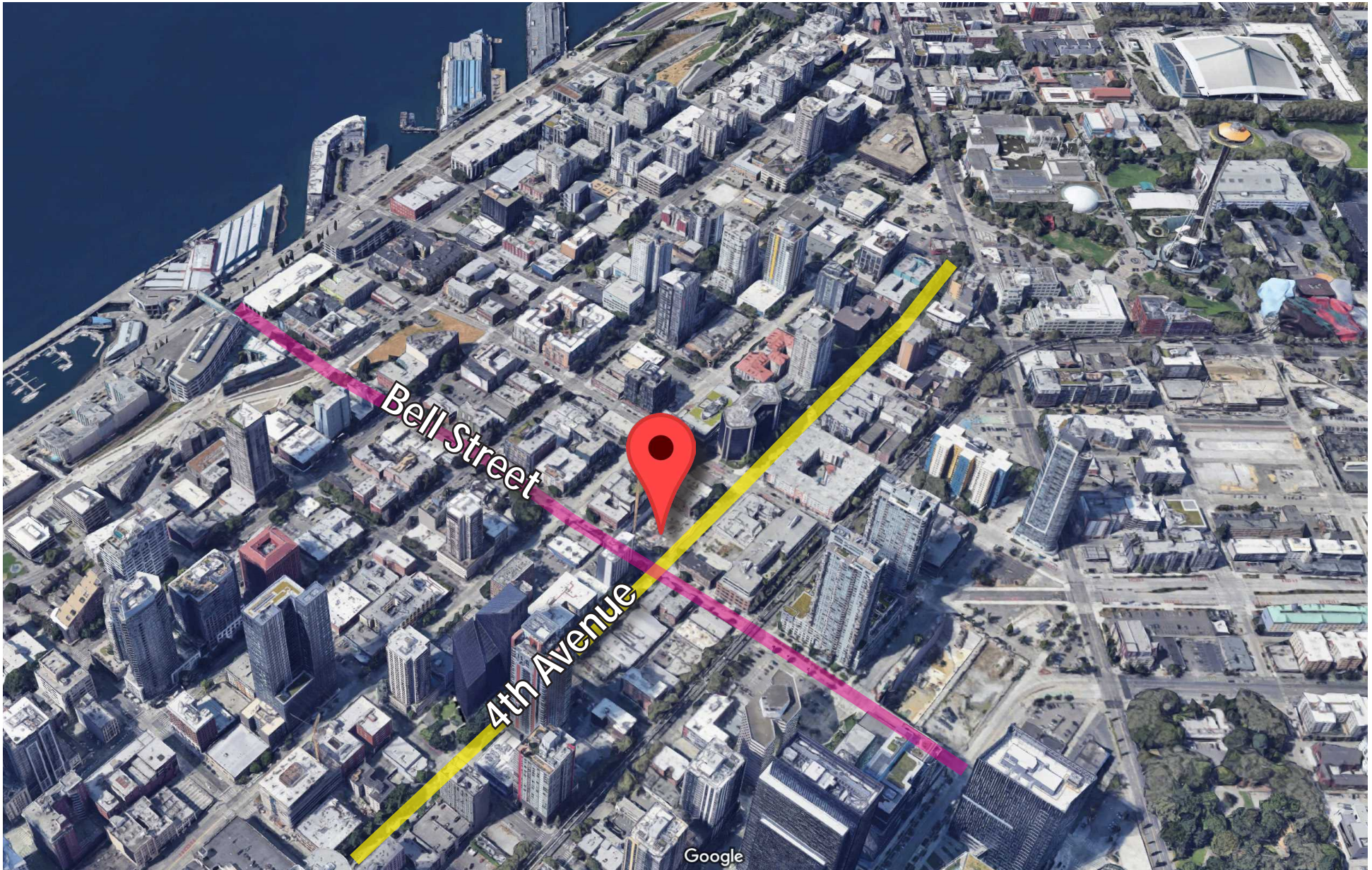
206.838.7737  
ckent@ewingandclark.com

TOM  
GRAFF

206.295.1445  
tomgraff@ewingandclark.com

# AERIAL MAP

2315 4TH AVENUE | SEATTLE, 98121



CAMERON  
KENT

206.838.7737  
ckent@ewingandclark.com

TOM  
GRAFF

206.295.1445  
tomgraff@ewingandclark.com