

FOR LEASE

PARKLANE EXECUTIVE CENTER

Located in Federal Way City Center

31620 23RD AVENUE S, FEDERAL WAY, WA



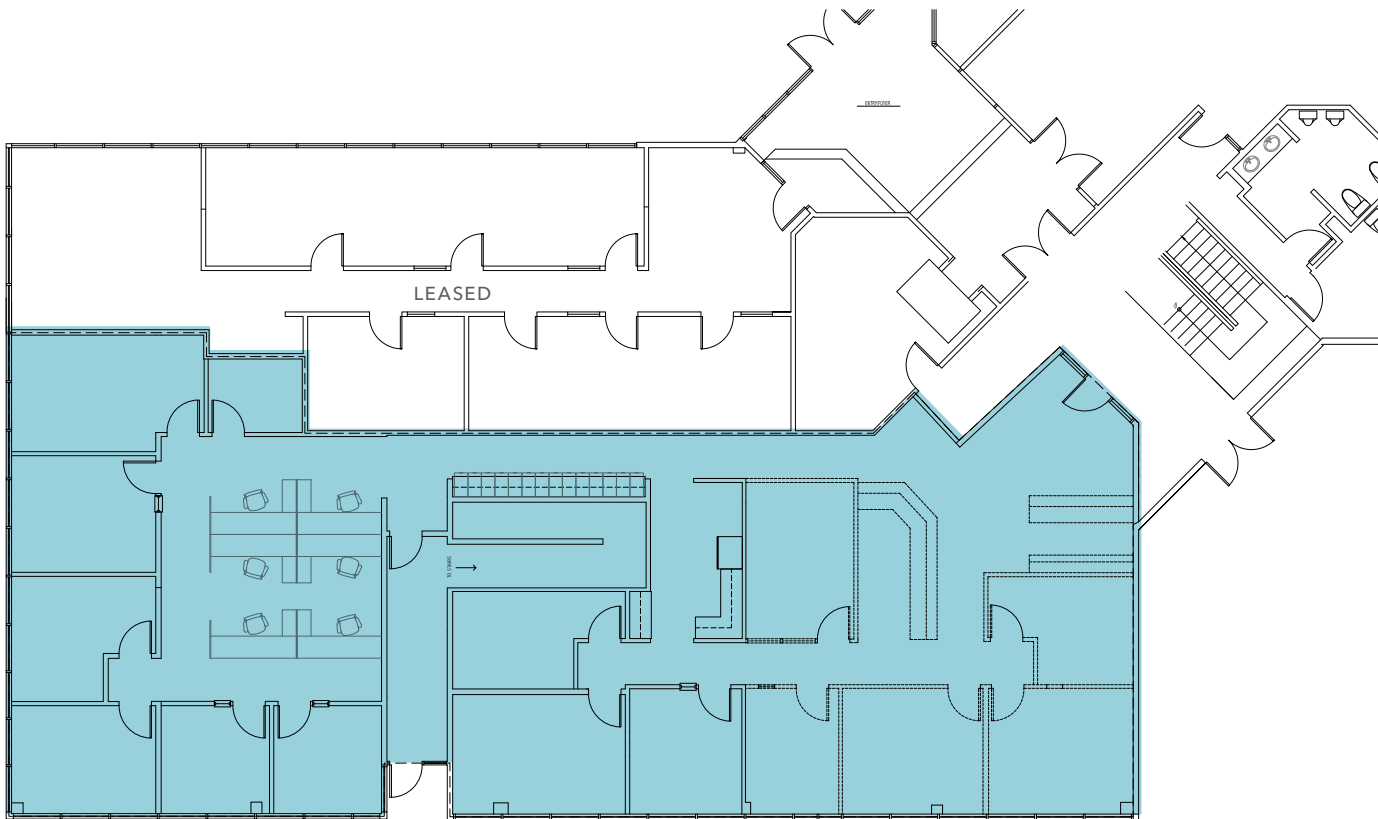
FIRST FLOOR PLAN

4,408 SF

SUITE 110

\$26.00

LEASE RATE (PSF), FULL SERVICE



SECOND FLOOR PLAN



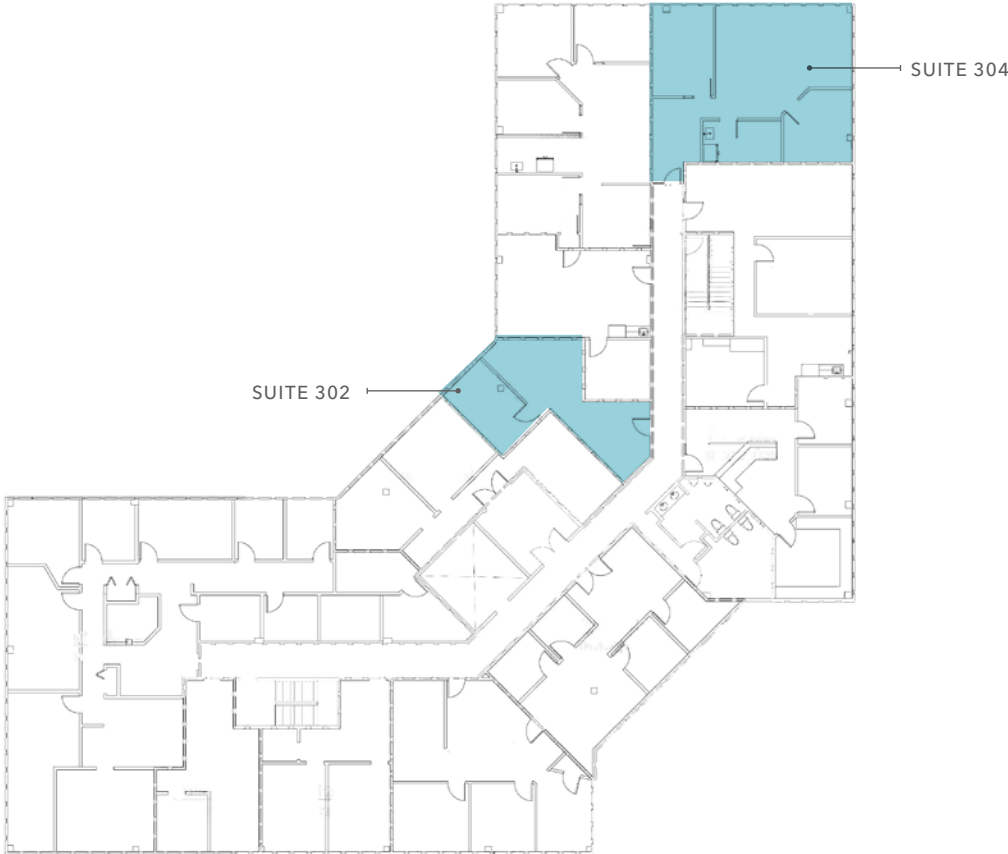
670 SF

SUITE 205

\$26.00

LEASE RATE (PSF), FULL SERVICE

THIRD FLOOR PLAN



1,167 SF

SUITE 304

560 SF

SUITE 302

\$26.00

LEASE RATE (PSF), FULL SERVICE

HIGHLY- ACCESSIBLE LOCATION

Close to Interstate 5

Adjacent to Transit Center

Walking distance to restaurants and shopping

5 MIN

TIGARD RETAIL CORE

13 MIN

PORTLAND CBD





PARKLANE EXECUTIVE CENTER

*For more information on
this property, please contact*

WILL FRAME
253.948.6895
will.frame@kidder.com

DREW FRAME
253.948.7032
drew.frame@kidder.com

KIDDER.COM

This information supplied herein is from sources we deem reliable. It is provided without any representation, warranty, or guarantee, expressed or implied as to its accuracy. Prospective Buyer or Tenant should conduct an independent investigation and verification of all matters deemed to be material, including, but not limited to, statements of income and expenses. Consult your attorney, accountant, or other professional advisor.

