



RETAIL
LEASE

FREWAY CENTER

1327 112th Street SE, Everett, WA 98208

Stossi Tsantilas

425.279.7943

stossit@rosenharbottle.com

425.454.3030
rosenharbottle.com

PO Box 5003
Bellevue, WA 98009 - 5003



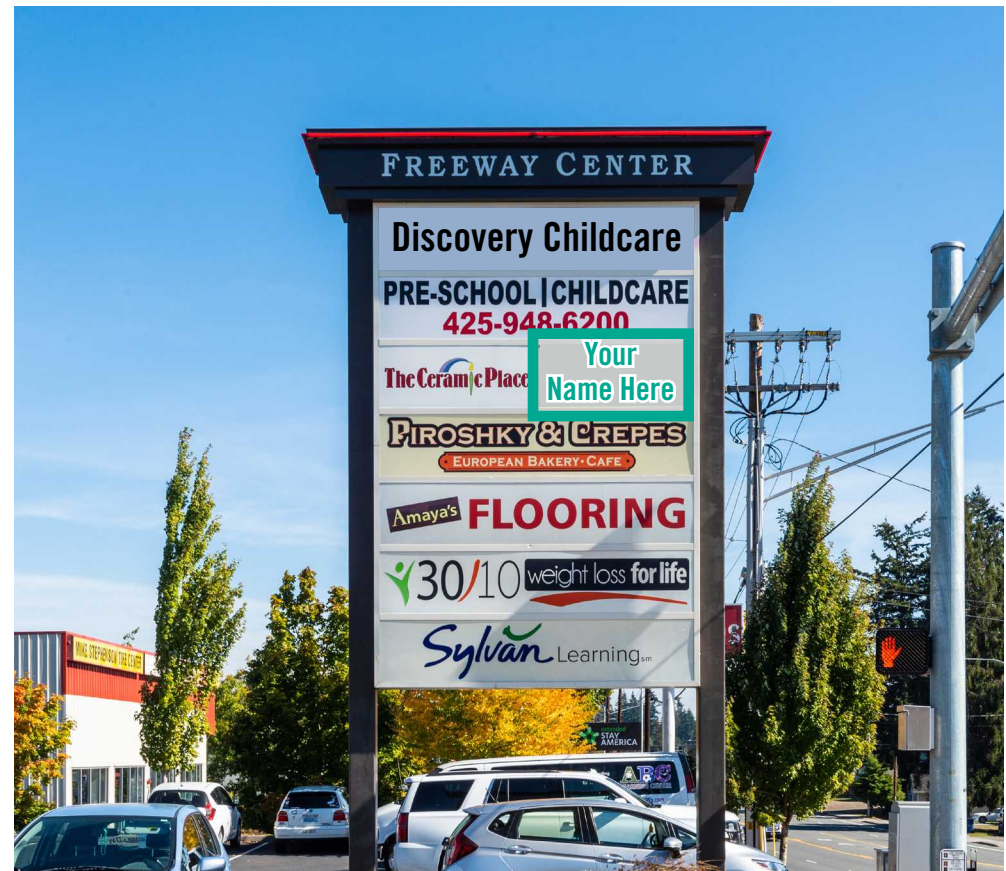
Available



NEW TO MARKET: RETAIL SPACE AVAILABLE

\$2,290/Month, NNN

946 SF Available



PROPERTY DETAILS:

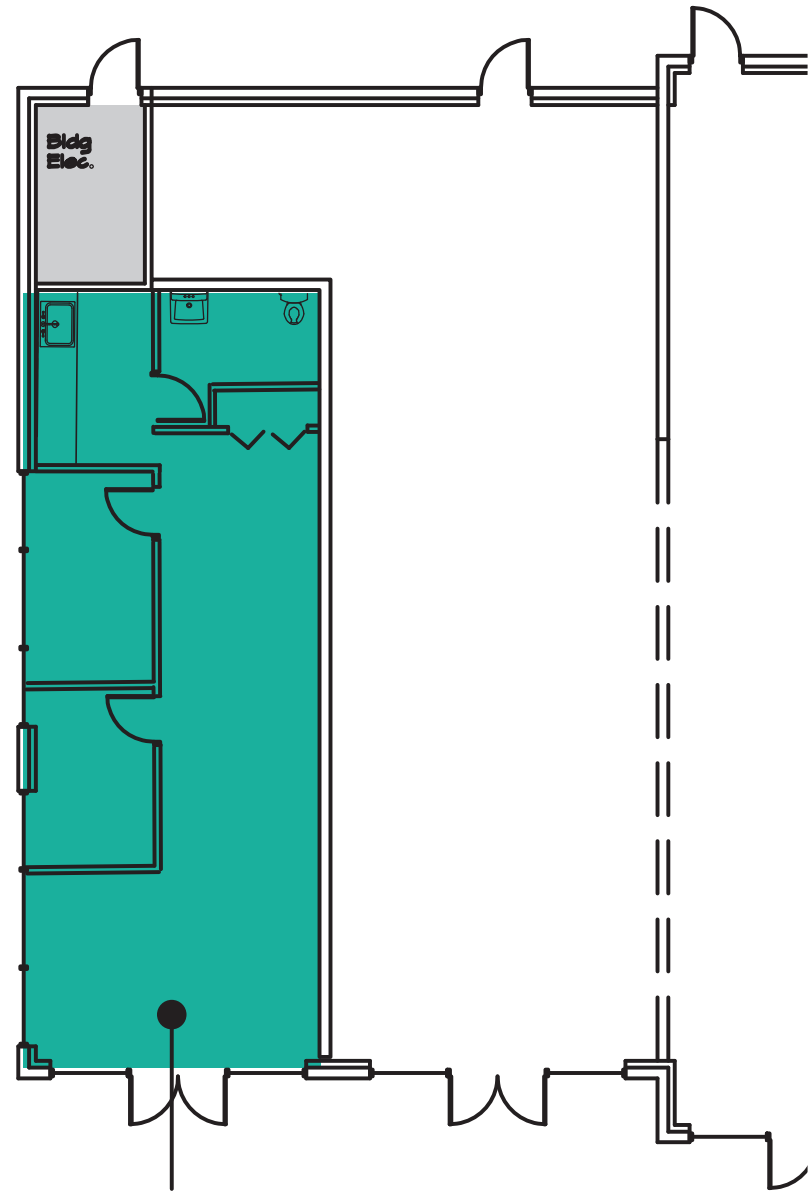
- Retail in Silverlake Neighborhood
- Close Proximity to South Everett Park & Ride
- Immediate Access to I-5
- Strong Signage Visibility on 112th Street
- Nearby Retailers: Costco, Safeway, Bartells, 24 Hour Fitness, & More

The information provided herein has been obtained from sources believed to be reliable, but no representation or warranty, express or implied, is made with respect to the accuracy or completeness of any such information. Each prospective buyer or tenant should independently investigate, evaluate and verify all information provided herein and any other matters deemed material. Please consult your attorney, tax advisor or other professional advisor. The terms of sale or lease set forth herein are subject to change or withdrawal at any time and without notice.

SUITE A-1 FLOOR PLAN

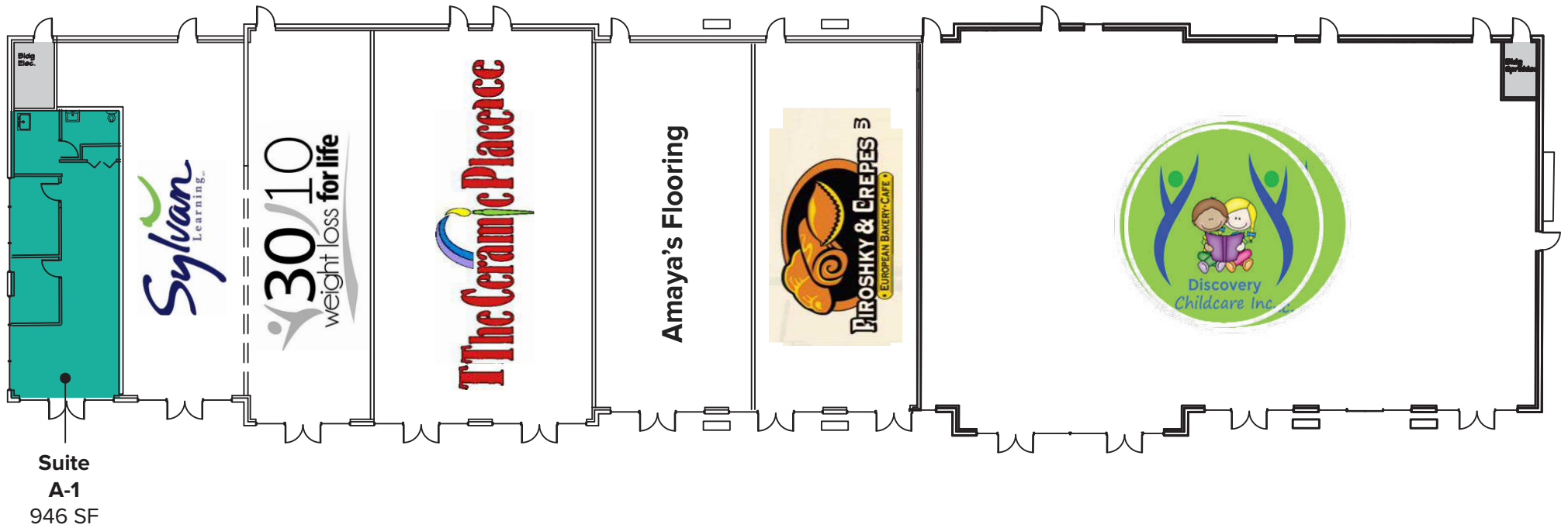
SUITE FEATURES

- Available 2/1/2025
- 946 SF
- \$2,290/Month, NNN
- Endcap Retail Space
- High Ceiling
- Extended Windowline
- Open Work Area
- 1 Restroom



**Suite
A-1
946 SF**

SITE PLAN



The information provided herein has been obtained from sources believed to be reliable, but no representation or warranty, express or implied, is made with respect to the accuracy or completeness of any such information. Each prospective buyer or tenant should independently investigate, evaluate and verify all information provided herein and any other matters deemed material. Please consult your attorney, tax advisor or other professional advisor. The terms of sale or lease set forth herein are subject to change or withdrawal at any time and without notice.

LOCATION MAP

