

# HIGHLINE PROFESSIONAL BUILDING

16122 8TH AVENUE SW  
BURIEN, WA 98166  
PACIFIC ASSET ADVISORS, INC.

# LISTING DETAILS

RENTABLE SF

1,284 -

5,712 SF

\$20/SF +

\$8.50/SF

NNN

ADDRESS: 16122 8th Avenue SW  
Buren, WA 98166

SPACE AVAILABLE: E5 - 5,712 SF (Can be divided to 2,856 SF)  
D2 - 1,284 SF

TYPE: Office/Medical

HIGHLIGHTS:

- Spaces are located on main hospital campus
- Flexible lease terms available
- Move-in ready
- Former Family Medicine Practice
  - Several exam rooms, Bathroom, Reception, etc

	1 MILE	3 MILES	5 MILES
MEDIAN INCOME:	\$117,997	\$109,885	\$107,854
TOTAL POPULATION:	14,882	76,661	190,366
DAYTIME POPULATION:	10,884	46,705	156,274

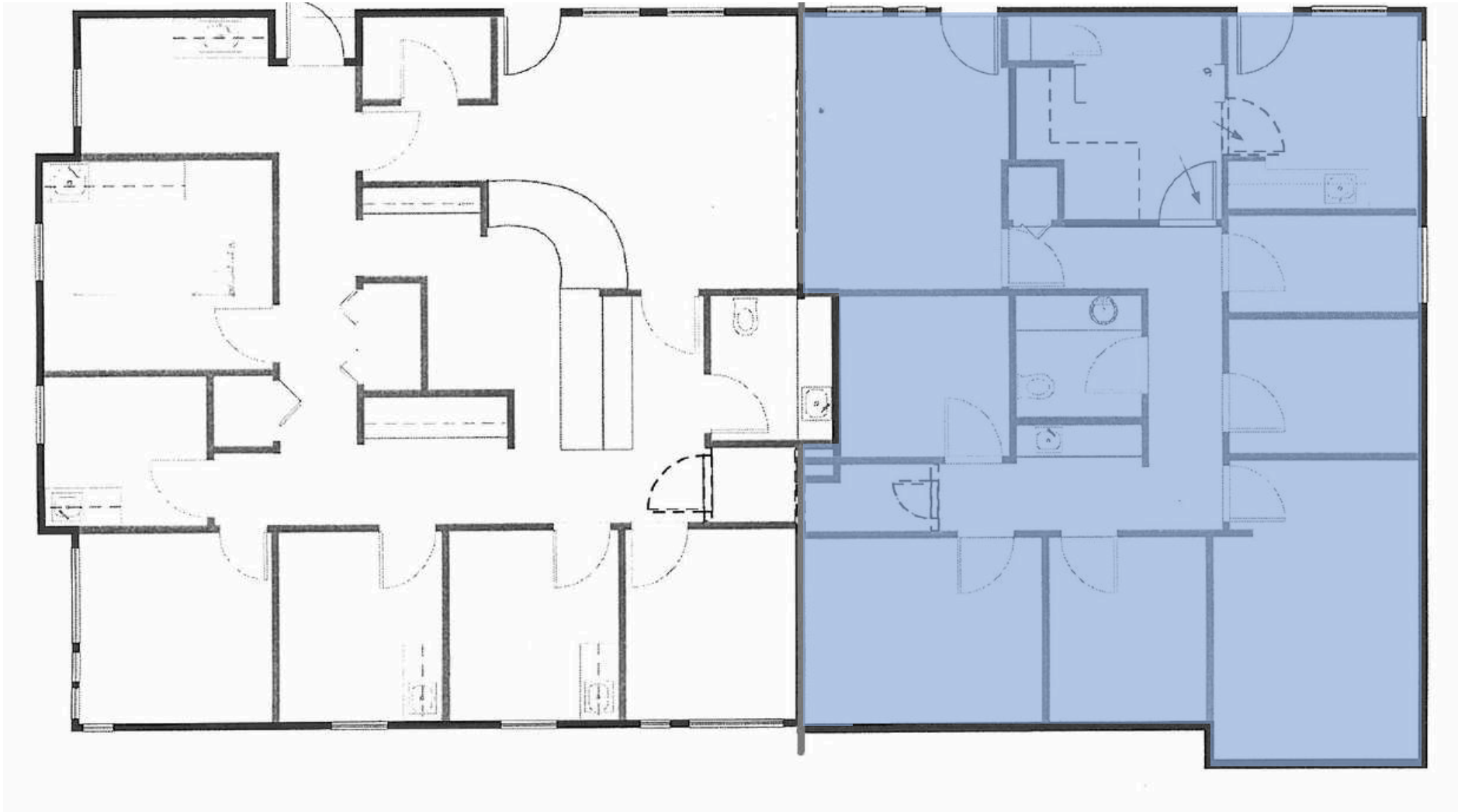
425.990.6200 | PAADVISORS.COM



# SITE PLAN SUITE E5



SITE PLAN  
SUITE D2



AERIAL

HIGHLINE  
HIGH SCHOOL

HIGHLINE  
PUBLIC SCHOOLS

Value  
Village



CVS  
pharmacy



Virginia Mason  
Franciscan Health

SYLVESTER  
MIDDLE SCHOOL



# CONTACT



**ADAM GREENBERG**  
SENIOR VICE PRESIDENT  
PARTNER  
425.503.1339  
ADAM@PAADVISORS.COM



**TYSON CLARKE**  
SENIOR VICE PRESIDENT  
PARTNER  
360.319.4855  
TYSON@PAADVISORS.COM

**PACIFIC ASSET ADVISORS, INC.**

THE PREMIER CHOICE OF THE PACIFIC NORTHWEST

14205 SE 36TH ST, SUITE 215, BELLEVUE, WA 98006