

A SEATTLE LANDMARK

3400

Phinney Ave

SEATTLE, WA

29,282 SF



CBRE



Building Stats

- 29,282 SF
- 22' CLEAR HEIGHT
- 2 GRADE LEVEL DOORS
- ABILITY TO DEMISE



Strategically positioned near the Fremont Bridge to provide access to downtown Seattle

History

1900

The Fremont Trolley Barn helped spur development and growth in the Fremont area in the early 1900s.

The Fremont Trolley Barn was completed in 1905 and originally served as a hangar for trolley cars.

1991

The building is one of the only brick structures in Fremont and was designated a Seattle landmark in 1991.

Today, the Fremont Trolley Barn continues to be a hub of activity in the Fremont neighborhood, housing restaurants, boutique shops, and offices.

It stands as a reminder of Seattle's early streetcar history.

1940

The Fremont Trolley Barn was built in 1902 by the Seattle Electric Company as part of Seattle's streetcar system. It served as a carbarn and power station for the city's streetcars.

The last streetcar ran out of the Fremont Trolley Barn in 1940. After that, the barn was used for bus maintenance and storage by Seattle's transit agency.

In the 1990s, the barn was converted into retail shops, offices, and dining. It was renovated while preserving the original historic elements of the structure.

Fremont

*The center of
the universe*

- 1 BALLARD FARMERS MARKET
- 2 BALLARD BREWING DISTRICT
- 3 RAD POWER BIKES
- 4 WOODLAND PARK ZOO
- 5 TRADER JOES
- 6 PCC
- 7 FRED MEYER
- 8 FREMONT SUNDAY FARMERS MARKET
- 9 GOOGLE
- 10 TABLEAU
- 11 ADOBE
- 12 EVO
- 13 BROOKS SPORTS



3400
Phinney Ave





3400
Phinney Ave

**DIRECT ACCESS
TO BURKE
GILMAN TRAIL**

WALK SCORE 92

BIKE SCORE 99



POPULATION
124,223

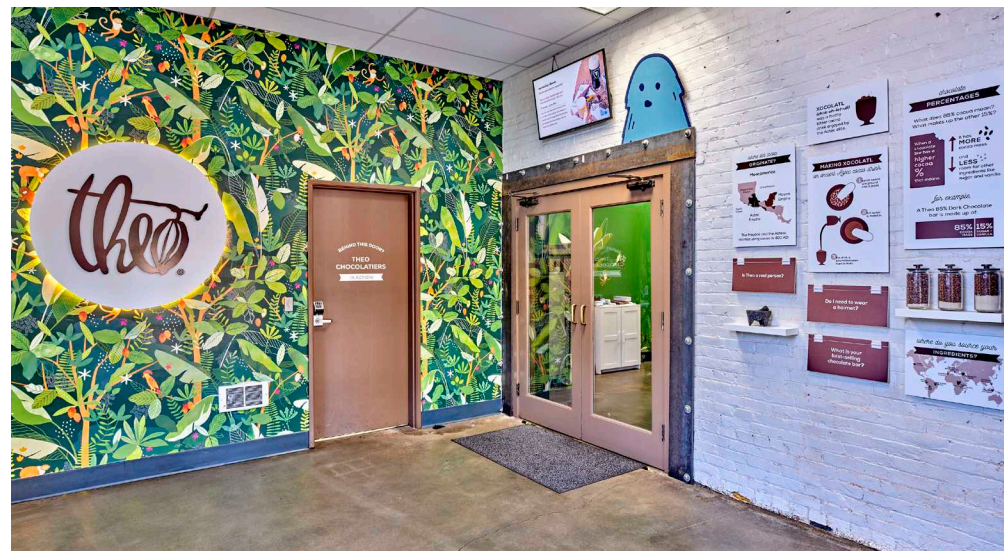
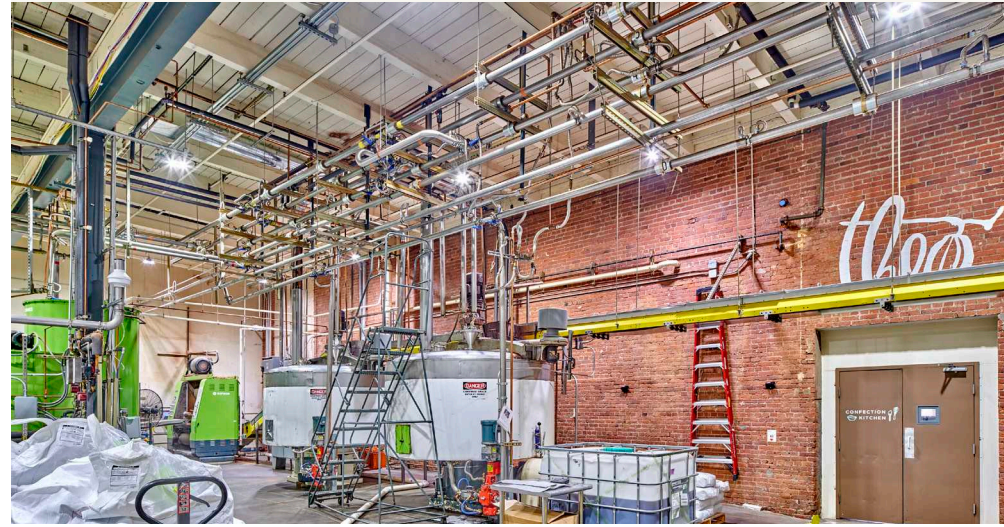
EMPLOYEE COUNT
53,402

HOUSEHOLD INCOME
\$165,336



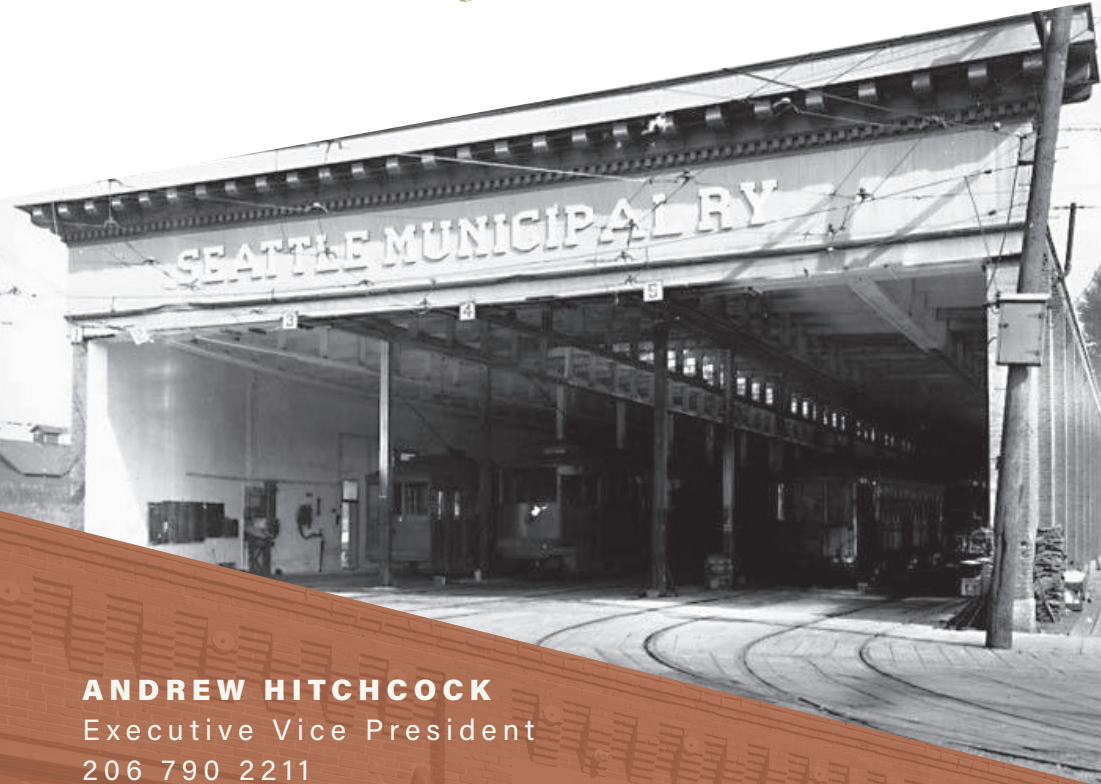
The Fremont Trolley Barn

is a compelling, multifaceted building that has endured over the last century and will continue to do so for many years to come.



3400

Phinney Ave



ANDREW HITCHCOCK
Executive Vice President
206 790 2211
andrew.hitchcock@cbre.com

ANDREW STARK
Executive Vice President
206 310 9044
andrew.stark@cbre.com

JENNIFER SEVERSEN
Vice President
206 390 1498
jennifer.seversen@cbre.com