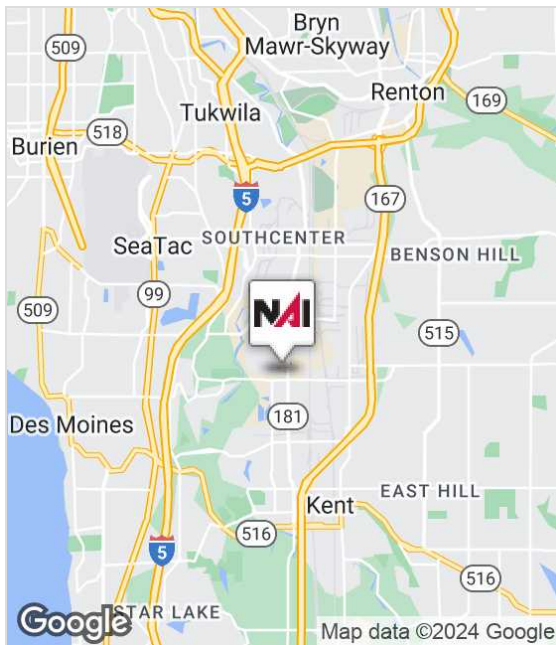


For Lease

# Industrial

23,292 SF



## West Valley @ 212th - Building B

6608 S 211th Street, Suite 101, Kent, WA 98032

- 23,292 SF with 4,567 SF of office (3,192 SF of bonus mezzanine)
- 3 DH doors & 2 oversized GL doors
- 24' clear height
- Heavy power (600 amps)
- Newer construction, corner unit with visibility to West Valley Hwy
- Great access to I-5 & SeaTac International Airport
- Available now
- Call for Rates

### Jeff Forsberg, CCIM

Principal • +1 425 586 5610 • jforsberg@nai-psp.com

### Kent Channing

Partner • +1 425 586 5628 • kchanning@nai-psp.com

### Arie Salomon, SIOR, CCIM

Principal • +1 425 586 5636 • asalomon@nai-psp.com



BELLEVUE | TACOMA

10900 NE 8th Street, Suite 1500

Bellevue, WA 98004

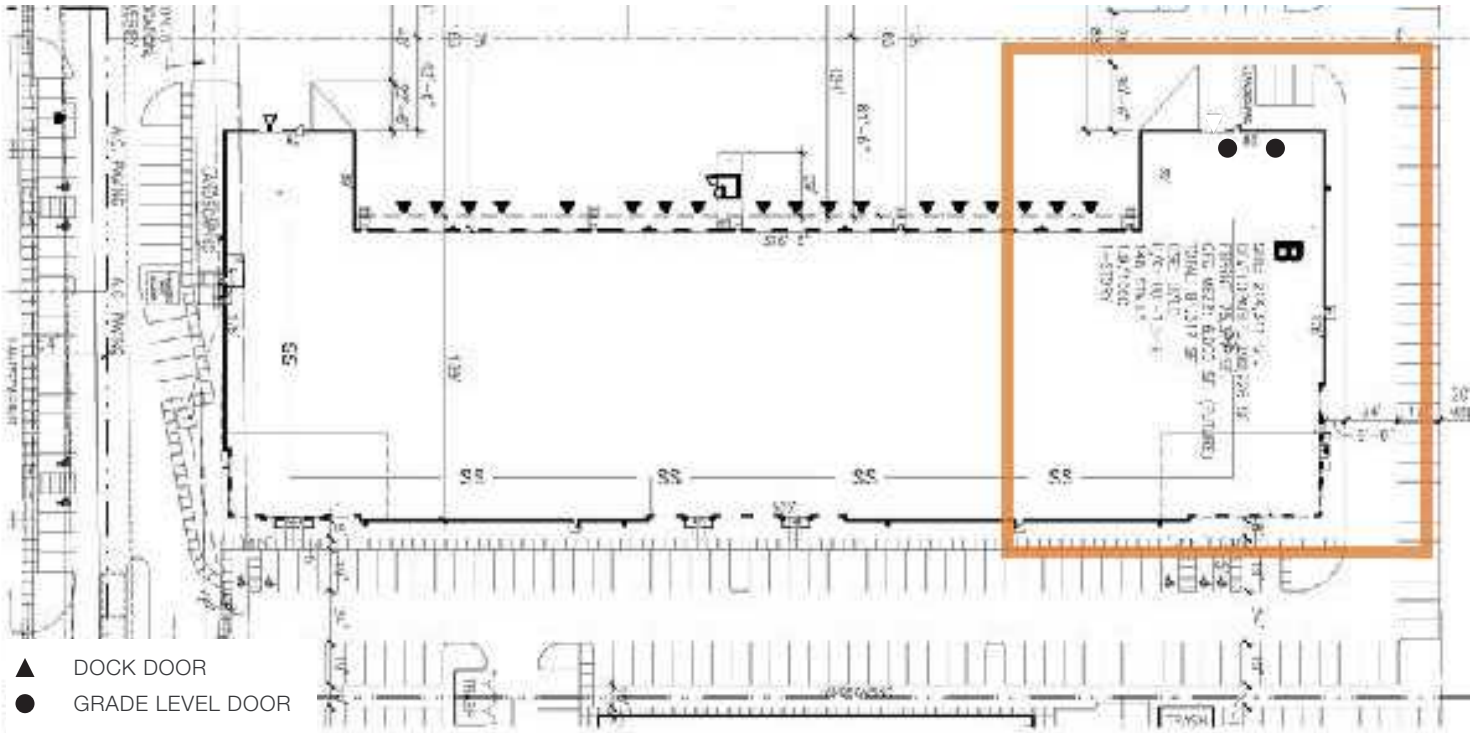
+1 425 586 5600

[nai-psp.com](http://nai-psp.com)

THE INFORMATION CONTAINED HEREIN HAS BEEN GIVEN TO US BY THE OWNER OF THE PROPERTY OR OTHER SOURCES WE DEEM RELIABLE, WE HAVE NO REASON TO DOUBT ITS ACCURACY, BUT WE DO NOT GUARANTEE IT. ALL INFORMATION SHOULD BE VERIFIED PRIOR TO PURCHASE OR LEASE.

Industrial for Lease

# West Valley @ 212th - Building B



- ▲ DOCK DOOR
- GRADE LEVEL DOOR



BELLEVUE | TACOMA

10900 NE 8th Street, Suite 1500

Bellevue, WA 98004

+1 425 586 5600

[nai-psp.com](http://nai-psp.com)

THE INFORMATION CONTAINED HEREIN HAS BEEN GIVEN TO US BY THE OWNER OF THE PROPERTY OR OTHER SOURCES WE DEEM RELIABLE, WE HAVE NO REASON TO DOUBT ITS ACCURACY, BUT WE DO NOT GUARANTEE IT. ALL INFORMATION SHOULD BE VERIFIED PRIOR TO PURCHASE OR LEASE.