



FOR LEASE

SKB ORIGINAL RAINIER BREWERY

LEE & ASSOCIATES
COMMERCIAL REAL ESTATE SERVICES

GENERAL OFFICE

6010 AIRPORT WAY SOUTH | SEATTLE, WA

FULL BUILDING - 5,549 SF

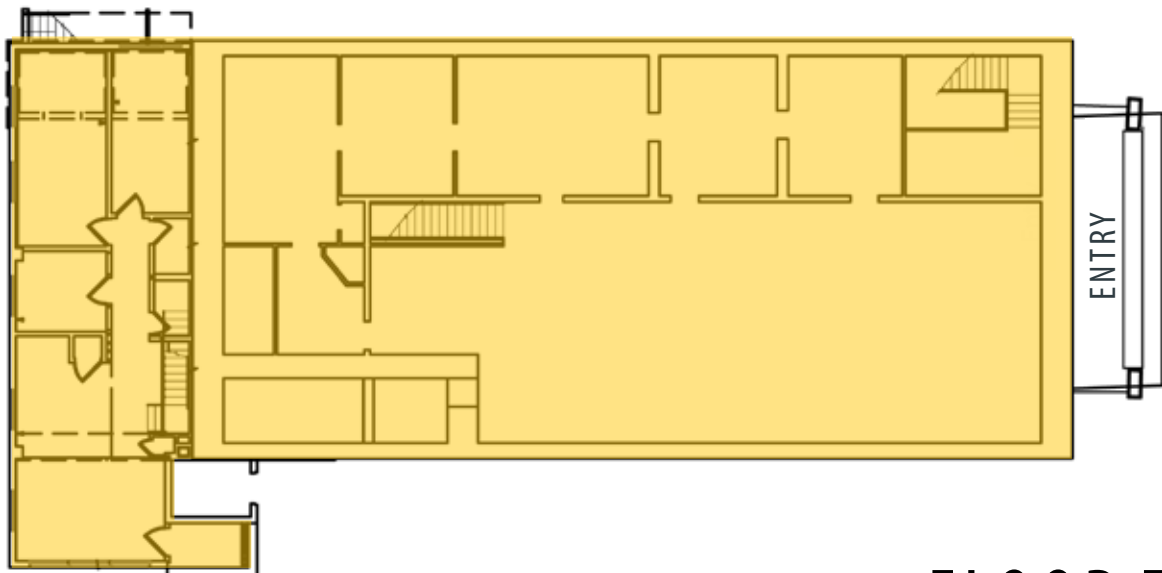
- ▶ Available - 5,549 SF
- ▶ High vaulted ceilings with abundant natural light
- ▶ Marble accented floors
- ▶ Landmark brick exterior
- ▶ Mix of private offices, conference rooms, and open office space
- ▶ Second floor balcony with wood railing
- ▶ Historic detailing
- ▶ The site offers generous parking
- ▶ Easy access to I-5 and Highways 99 and 509
- ▶ Ideal design for architectural, advertising, or software development firms

OFFICE SPACE

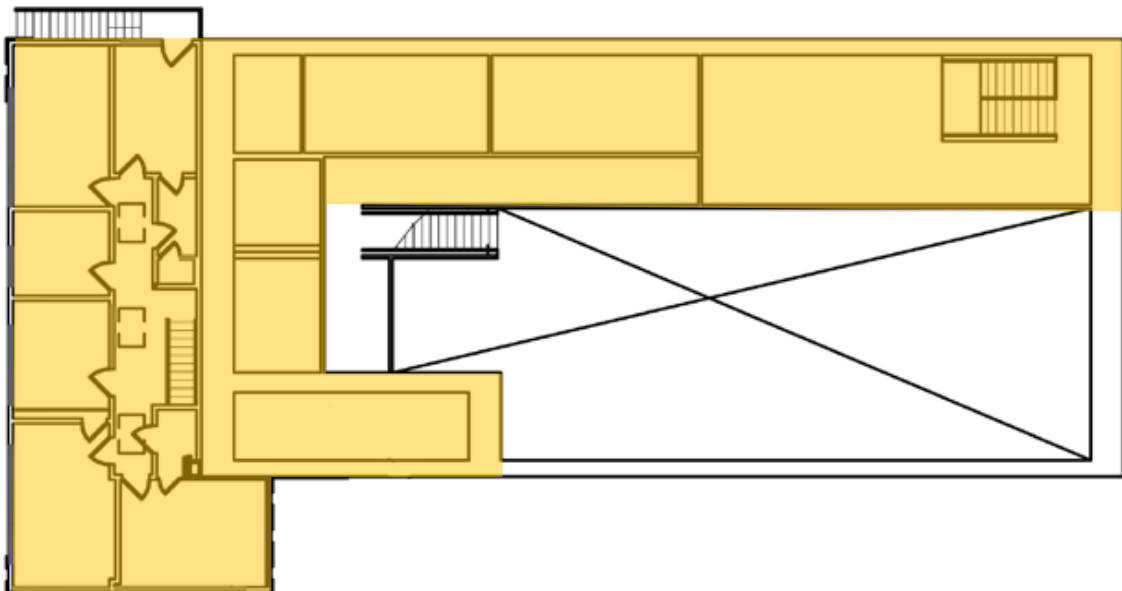




FLOOR ONE

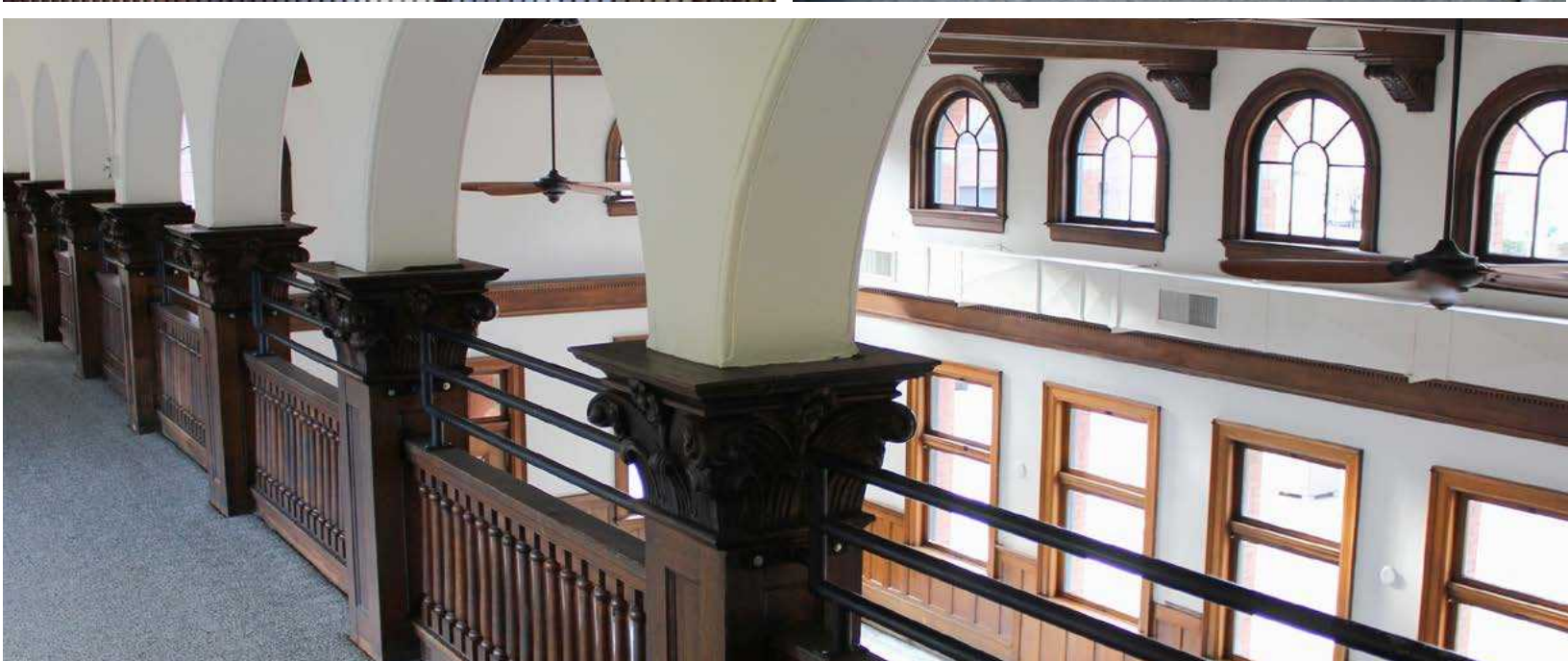
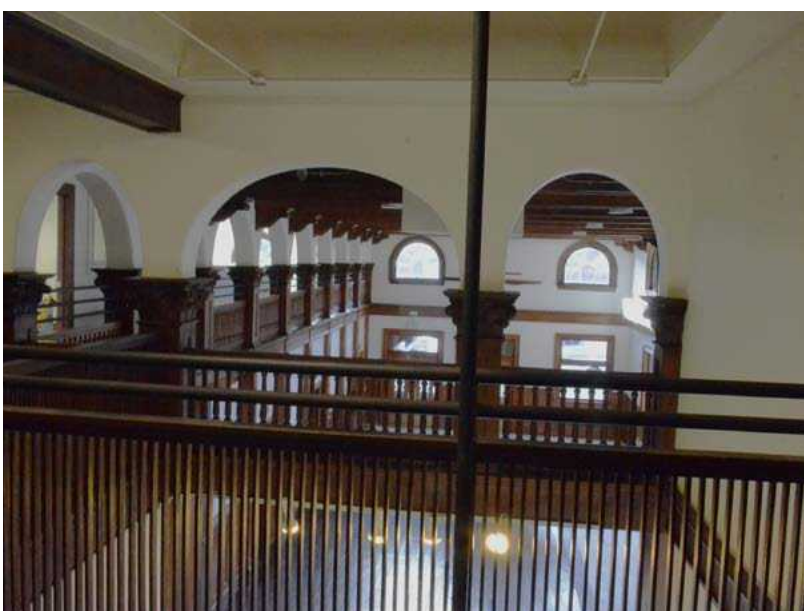
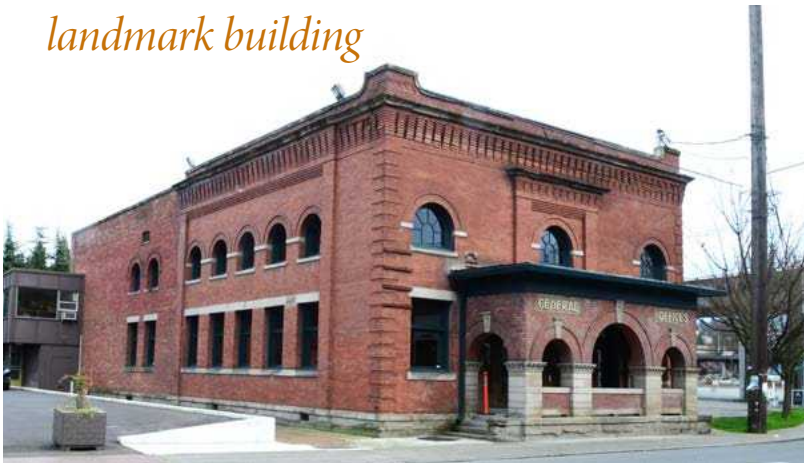


FLOOR TWO



PHOTOS

The general office building is an ideal location and the Original Rainier Brewery's landmark building



LOCAL AMENITIES, EATERIES, & SHOPS

ONE-OF-A-KIND
PACIFIC
NORTHWEST
NEIGHBORHOOD

- JELLYFISH BREWING
- GREAT NOTION BREWING
- TINTE CELLARS
- THE BARN OWL
- BROTHER JOE
- FONDA LA CATRINA
- ELYSIAN TAPROOM
- THE CELLARS
- BOP BOX
- STAR BRASS
- SMARTY PANTS
- DONBURI STATION
- GEORGETOWN BALLROOM

ORIGINAL
RAINIER BREWERY

GEORGETOWN

- » 15 MINUTES TO DOWNTOWN SEATTLE
- » 20 MINUTES TO BELLEVUE
- » 15 MINUTES TO SEATAC

LOCATION

As arguably the oldest neighborhood in Seattle, Georgetown has been creating history since the very beginning, but certainly "Georgetown" firmly established its presence on the map in the 1990's and early 2000s with Industrial Coffee, Stellar Pizza and live music performances drawing crowds of folks from all over the city. Since that time, multiple bars, entertainment venues, a web design company, bakery, and even a circus school have established the community as a thriving cultural destination fostering its original character and history. Today Georgetown offers an abundance of breweries, eateries, shops, art and a growing work force. Located just ten minutes from downtown Seattle, and five minutes from King County Airport, Georgetown is definitely a destination hotspot.

SEAN DURKIN
SIOR, MSRE, CCIM, Principal
D 206.773.2682
O 425.830.2647
sdurkin@lee-associates.com

JOHN BRUSSA
Vice President
D 206.773.2675
C 425.891.1424
jbrussa@lee-associates.com

AMANDA HAHNEMANN, CCIM
Senior Vice President
D 206.773.2691
C 206.852.1640
ahahnemann@lee-associates.com

SKB

LEE & ASSOCIATES
COMMERCIAL REAL ESTATE SERVICES