

# FOR LEASE

2001 15th Ave W,  
Seattle, WA 98119



COMING  
SOON!



## INTERBAY URBAN SEATTLE

Justin Holmes | Josh Parnell | Don Whittles | Justice Knox

First Western Properties—Tacoma Inc. | 253.472.0404  
6402 Tacoma Mall Blvd, Tacoma, WA 98409 | fwp-inc.com

AVAILABLE:

SUITE A2: 3,010 SF

SUITE A10: 1,200 SF

SUITE A14: 1,378 SF

CALL FOR DETAILS

CALL FOR DETAILS

CALL FOR DETAILS




- **Anchored** by Whole Foods and Petco
- **Conveniently** located minutes from downtown Seattle
- **Great visibility** from 15th Ave West
- **Multiple** access points into the center and signalized intersection
- **Surrounded** by premier neighborhoods; Queen Anne, Magnolia, and Ballard

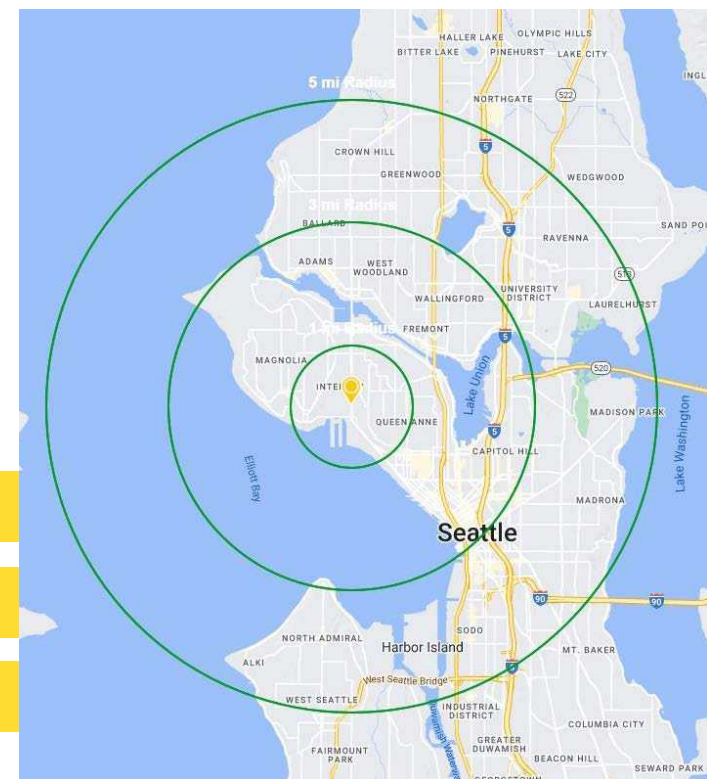


TENANTS:

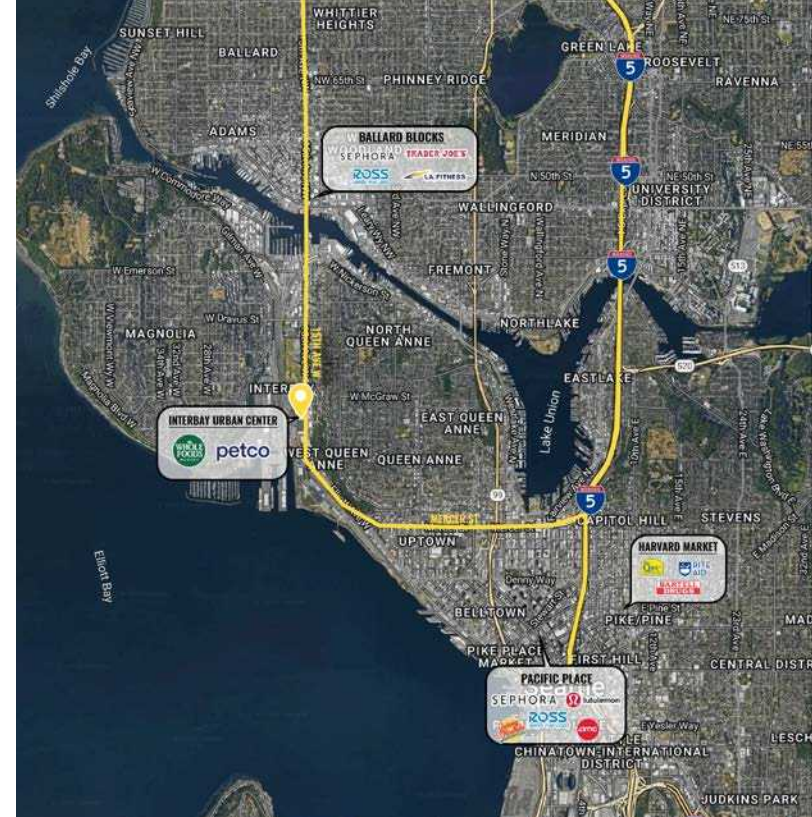
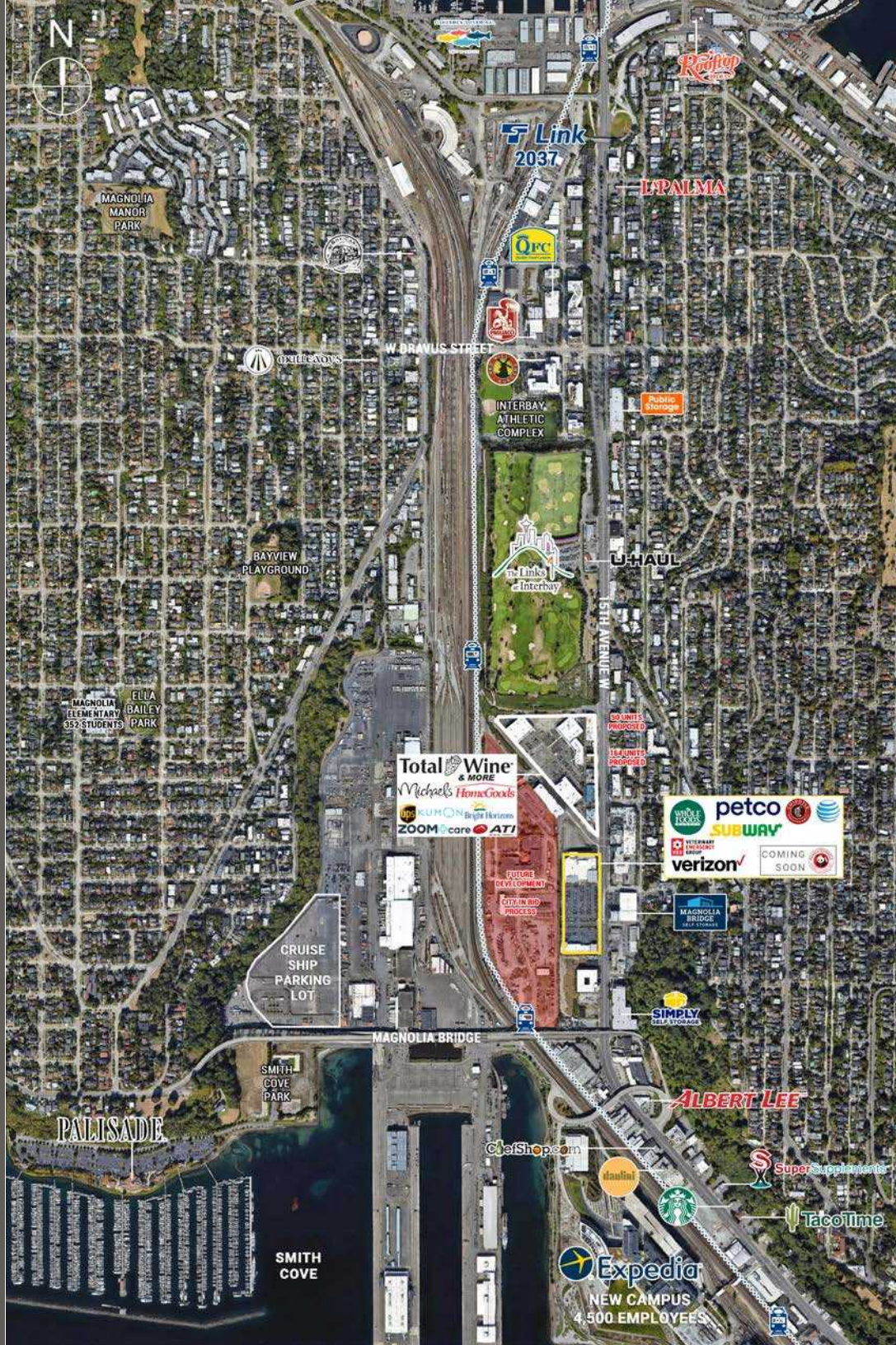


COMING SOON

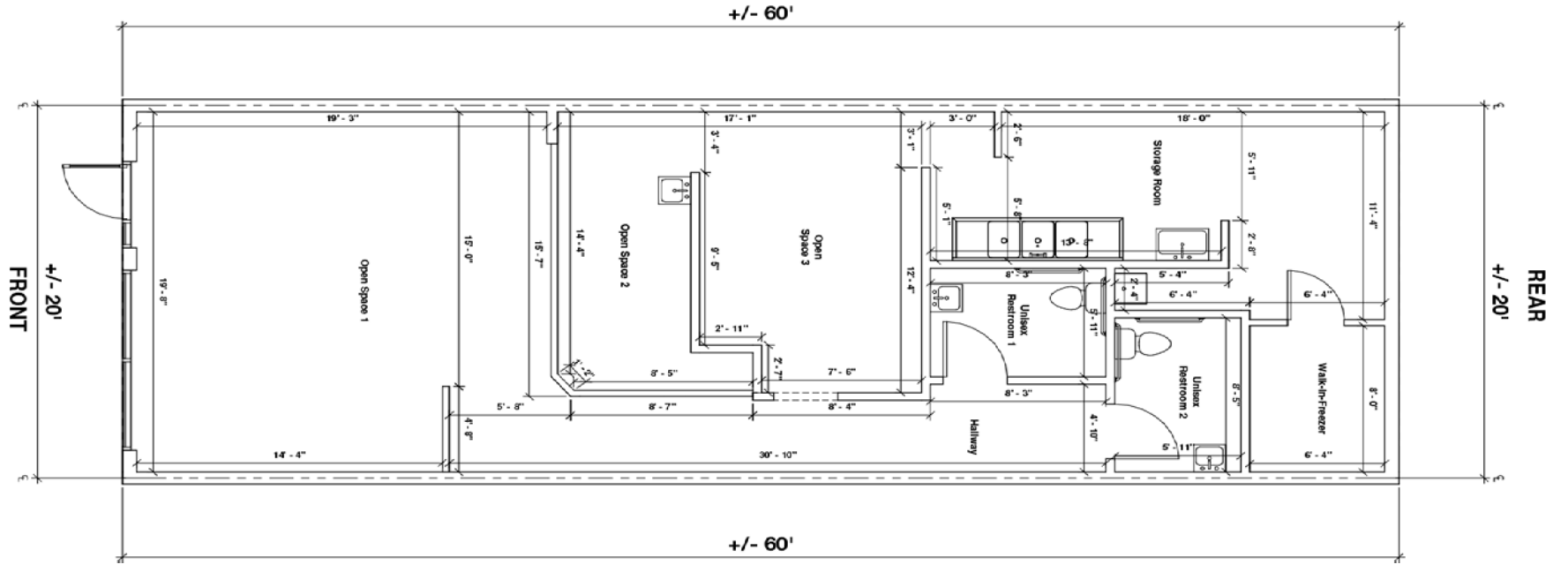
			
Regis - 2023	Population	Average HH Income	Daytime Population
Mile 1	22,546	\$189,329	8,985
Mile 3	209,886	\$156,272	242,170
Mile 5	471,452	\$154,010	408,238



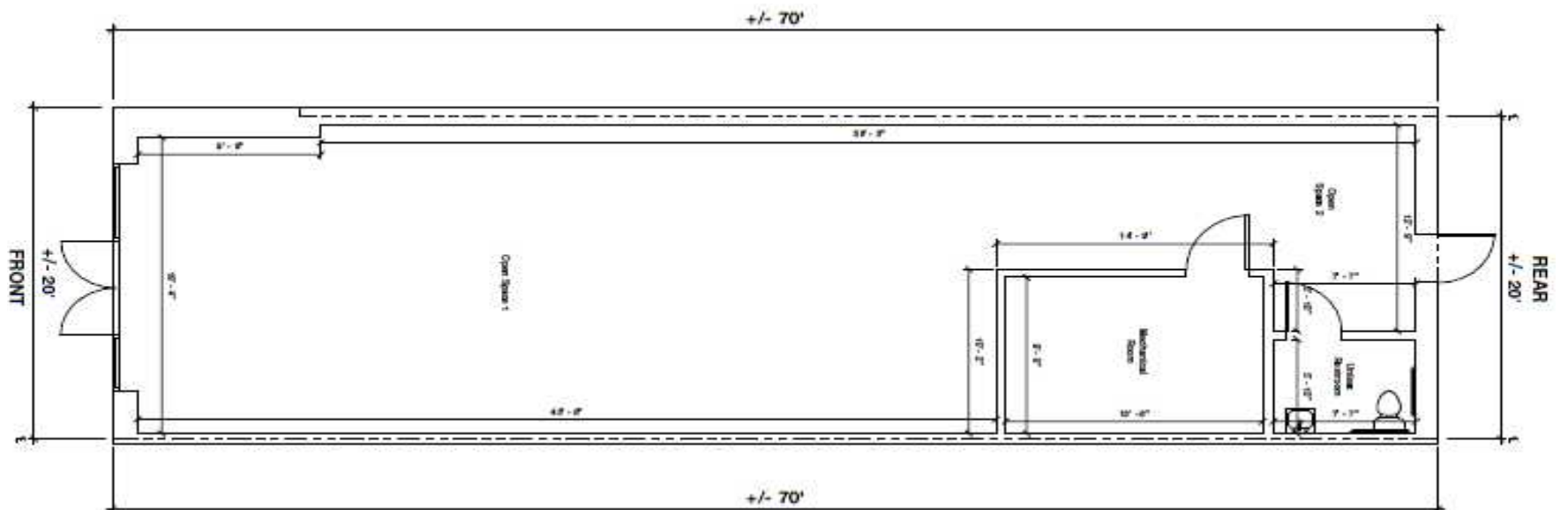
# AERIAL MAP



# AVAILABLE: SUITE A10 - 1,200 SF



# AVAILABLE: SUITE A14 - 1,378 SF



SUITE A10:  
1,200 SF

SUITE A14:  
1,378 SF



SUITE A2:  
3,010 SF

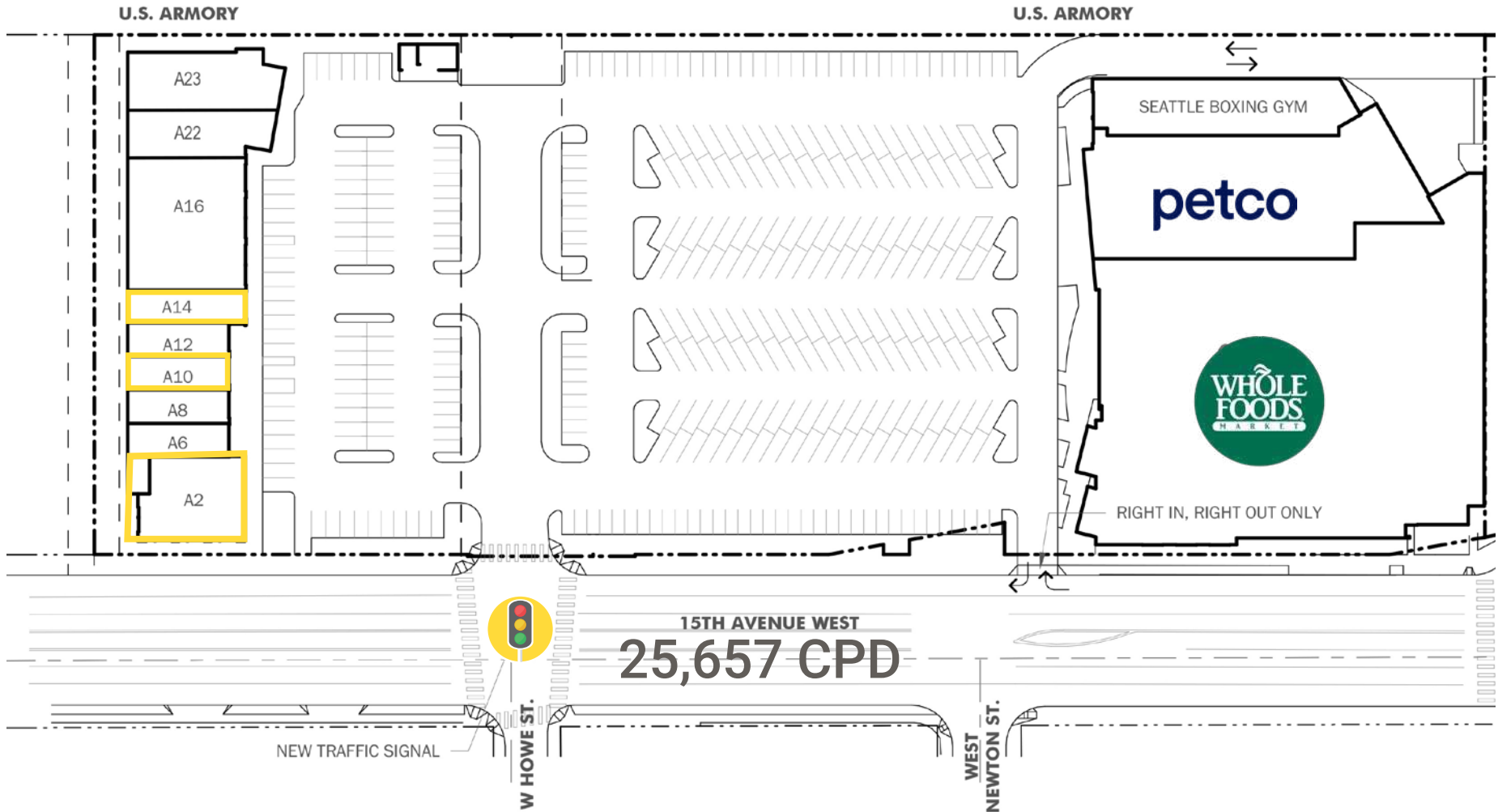


PHOTO

TOTAL CENTER GLA : 80,560 SF

TOTAL PARKING PROVIDED: 347 STALLS (4.31 STALLS / 1000 SF)

SITE PLAN



Suite	SF	Tenant
Suite A	40,928	Whole Foods Market
Suite B	14,334	Petco
Suite C	5,055	Platt Sports & Training
<b>Suite A2</b>	<b>3,010</b>	<b>AVAILABLE</b>
Suite A6	1,208	Verizon Wireless
Suite A8	1,208	AT&T

Suite	SF	Tenant
<b>Suite A10</b>	<b>1,200</b>	<b>AVAILABLE</b>
Suite A12	1,208	Subway
<b>Suite A14</b>	<b>1,378</b>	<b>AVAILABLE</b>
A16-A20	5,600	The Veterinary Emergency Group
A22	2,628	Chipotle
A23	2,814	Panda Express [Coming Soon]



TACOMA | KIRKLAND | PORTLAND | SEATTLE

# RELATIONSHIP FOCUSED. RESULTS DRIVEN.

**JUSTIN HOLMES**

 253.447.2282


 [justin@firstwesternproperties.com](mailto:justin@firstwesternproperties.com)


**JOSH PARNELL**

 253.284.3630

 [josh@firstwesternproperties.com](mailto:josh@firstwesternproperties.com)

**DON WHITTLES**

 253.471.5509

 [dwhittles@firstwesternproperties.com](mailto:dwhittles@firstwesternproperties.com)

**JUSTICE KNOX**

 253.471.5501

 [jknox@firstwesternproperties.com](mailto:jknox@firstwesternproperties.com)

© First Western Properties, Inc. DISCLAIMER: The above information has been secured from sources believed to be reliable, however, no representations are made to its accuracy. Prospective tenants or buyers should consult their professional advisors and conduct their own independent investigation. Properties are subject to change in price and/or availability without notice.

First Western Properties—Tacoma Inc. | 253.472.0404  
6402 Tacoma Mall Blvd, Tacoma, WA 98409 | [fwp-inc.com](http://fwp-inc.com)