

FOR LEASE

# MERIDIAN CENTER

*Office space available near  
Northgate lightrail station*

10303 MERIDIAN AVE N, SEATTLE WA



KIDDER.COM

**km** Kidder  
Mathews



SounderBruce, CC BY-SA 4.0

*Office space available near Northgate  
Transit center, and North Seattle College*



EASY ACCESS TO  
AND FROM I-5



NEAR  
SEVERAL  
PARKS



NEAR  
NORTHGATE  
TRANSIT CENTER



NEAR KRAKEN  
COMMUNITY  
ICEPLEX



CLOSE TO  
SHOPPING AND  
RESTAURANTS



88/100  
BIKERS  
PARADISE

OFFICE AVAILABILITY

SUITE 104	1,456 RSF	\$33/SF, FS	<a href="#">View floor plan</a>
SUITE 205	615 RSF	\$33/SF, FS	<a href="#">View floor plan</a>

# LOCATION OVERVIEW

## NORTHGATE TRANSIT CENTER

Northgate Transit Center is located directly across I-5 from the Meridian Center Building and is accessible via a bike/pedestrian overpass. It provides bus and light rail transit options. Starting in 2024, riders can travel directly from the Northgate station to Bellevue and the Microsoft campus, and in Fall 2024, the Lynnwood Link Extension will open, providing access for commuters to the north.



## NORTHGATE STATION REDEVELOPMENT

Northgate Station is undergoing redevelopment into a mixed-use center with hotels, housing, offices and retail. Retail shopping options will continue to include Barnes & Noble and Nordstrom Rack. The Kraken Community Iceplex, completed in 2021, includes rinks for community use in addition to practice facilities for the Seattle Kraken.



## MINERAL SPRINGS PARK

Mineral Springs Park is the nearest greenspace to the Meridian Center Building. Just a short walk away, the park includes beautiful trees, plants, and flowers, and is home to one of two disc golf courses in Seattle. Within the landscape is also an "art walk", with meditative stone sculptures.



# MERIDIAN CENTER

---

*Exclusively leased by*

DAVID GURRY  
206.931.6474  
david.gurry@kidder.com

DAN DAHL  
206.650.6154  
dan.dahl@kidder.com

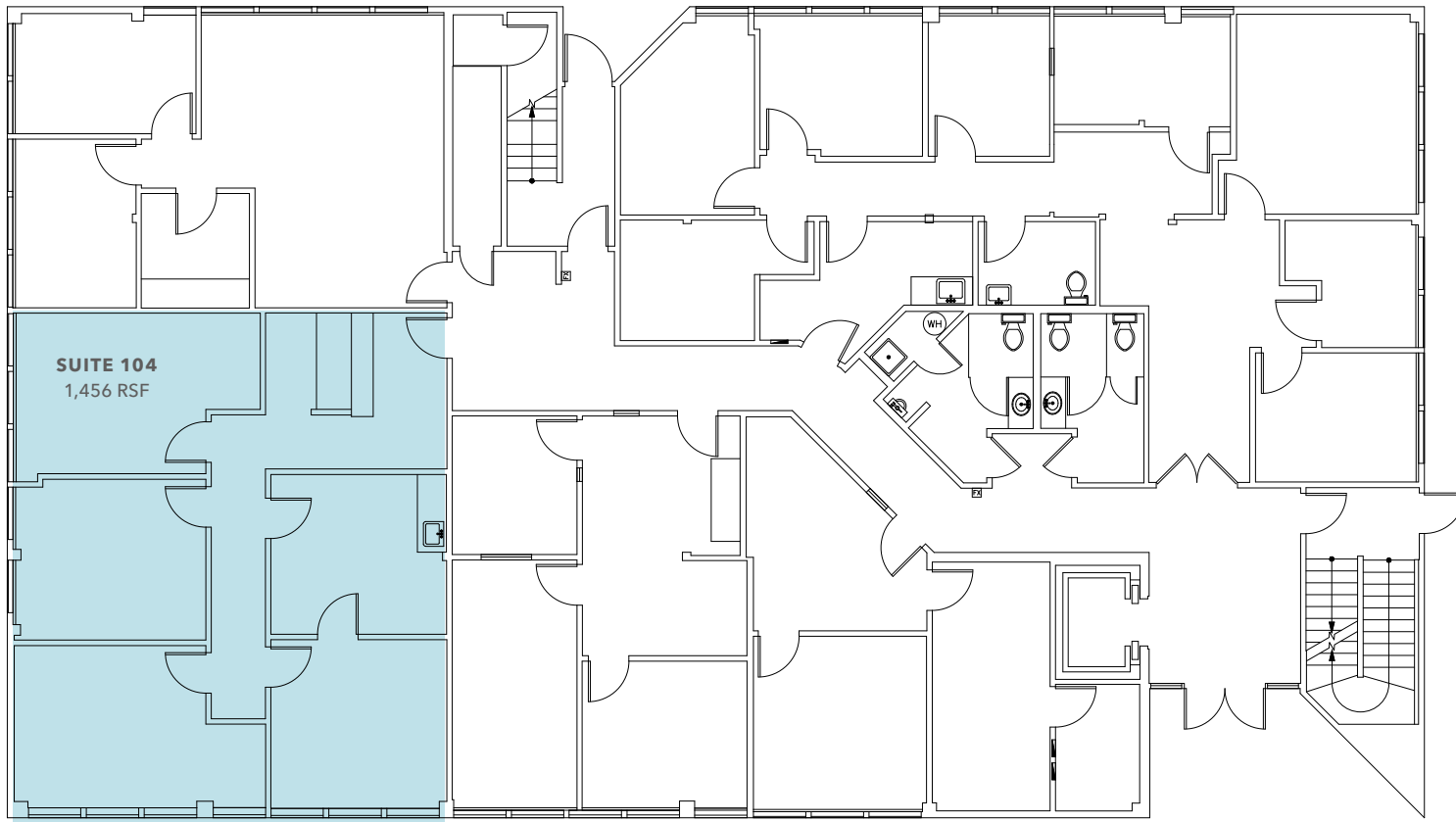
KIDDER.COM

This information supplied herein is from sources we deem reliable. It is provided without any representation, warranty, or guarantee, expressed or implied as to its accuracy. Prospective Buyer or Tenant should conduct an independent investigation and verification of all matters deemed to be material, including, but not limited to, statements of income and expenses. Consult your attorney, accountant, or other professional advisor.

 **Kidder  
Mathews**

# FIRST FLOOR

SUITE 104 - 1,456 SF



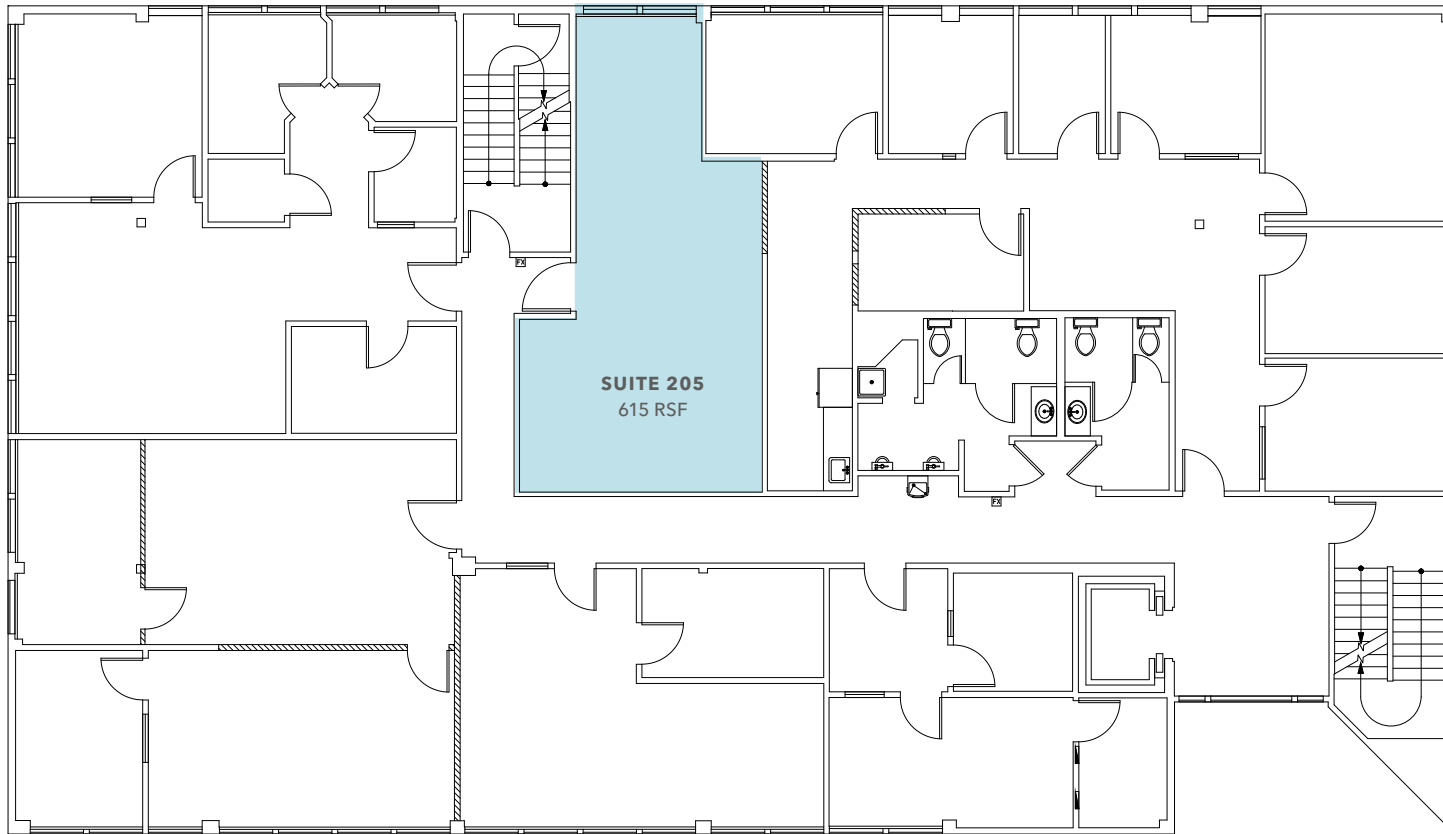
DAVID GURRY  
206.931.6474  
david.gurry@kidder.com

DAN DAHL  
206.650.6154  
dan.dahl@kidder.com

[KIDDER.COM](http://KIDDER.COM)

# SECOND FLOOR

SUITE 205 - 615 SF



DAVID GURRY  
206.931.6474  
david.gurry@kidder.com

DAN DAHL  
206.650.6154  
dan.dahl@kidder.com

[KIDDER.COM](http://KIDDER.COM)