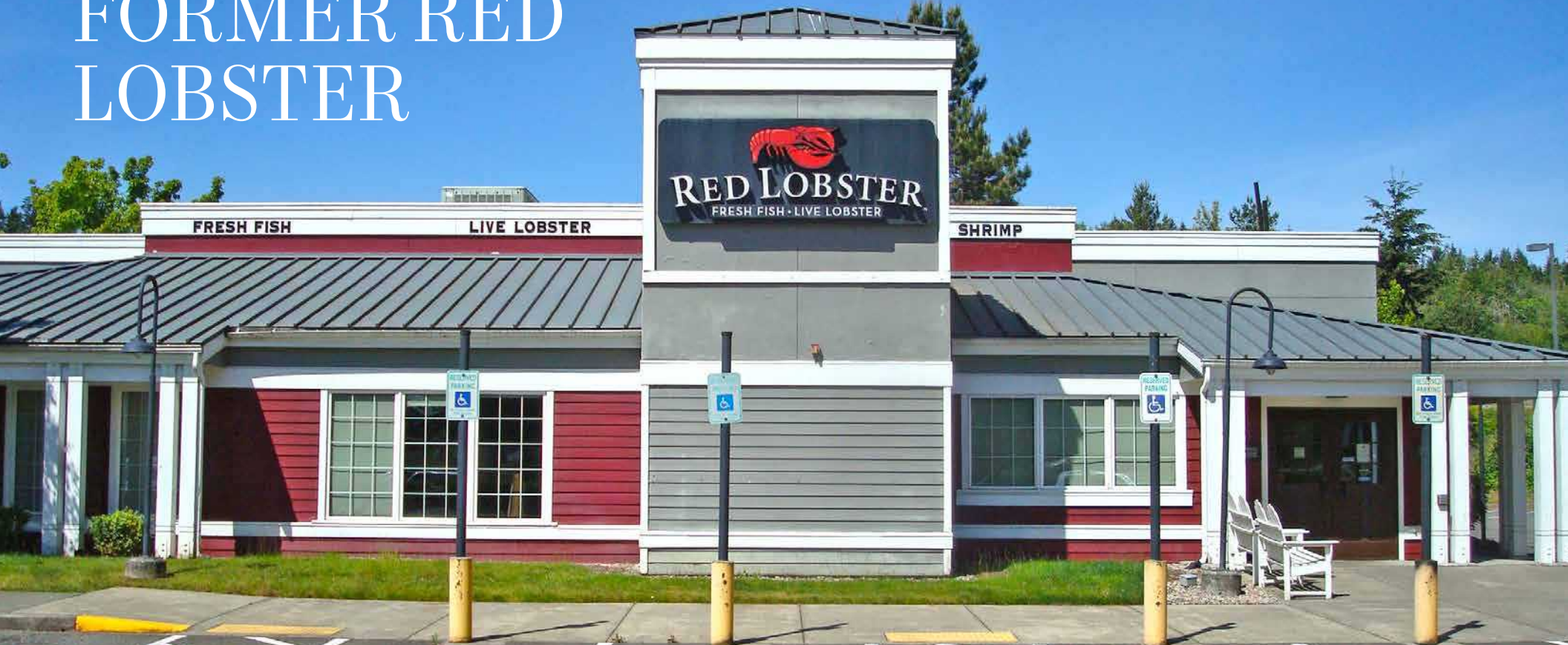


FORMER RED LOBSTER



FOR LEASE

*A 8,356 SF former restaurant, shadow anchored by
Target and the Kitsap Mall*

3208 NW RANDALL WAY, SILVERDALE, WA

8,356 SF

BUILDING

80,150 SF

LAND



*Former Red Lobster restaurant
available for lease*

YEAR BUILT	1993
TOTAL BUILDING SF	8,356 SF
LAND	80,150 SF
LEASE RATE	\$27.00 PSF NNN
ACCESS	Immediate access from SR-3 and easy on/off the highway
SIGNAGE	Large monument
TRAFFIC	±25,000 VPD on Kitsap Mall Blvd
EQUIPMENT	Hood and 3 walk-in coolers

8,356 SF

AVAILABLE

\$27.00

LEASE RATE (PSF/NNN)

3208 NW RANDALL WAY



AVAILABLE OR LEASE

KIDDER MATHEWS



KITSAP MALL

macy's	BARNES & NOBLE	Red Robin	DICK'S Sporting Goods
WinCo Foods	WORLD MARKET	JCPenney	H&M
KOHL'S	BUFFALO WILD WINGS	Eagle	Starbucks
KFC	CHASE	Jack in the Box	Red Robin

SUBJECT PROPERTY

NEW HOME CENTER

REI

SILVERDALE SHOPPING CENTER

ROSS	GNC	Red Robin
McDonald's	Bright Now! Dental	verizon

TRADER JOE'S

target

HOBBY LOBBY

LOWE'S	COSTCO	ASHLEY
BEST BUY	PETSMART	Columbia

303

TOWNE CENTRE

BANK OF AMERICA	Arby's	BECU
Panera Bread	BIG O	Great Clips

AMC THEATRES

Walgreens

KITSAP PLACE

tj-max	Michaels
DOLLAR TREE	CAR-TOYS

DQ

jiffy lube

Wendy's

3

GROCERY OUTLET

HARBOR FREIGHT

Best Western	TacoTime
POPS-MOPPS	

SILVERDALE PLAZA

BURGER KING	Starbucks	RITE AID	JOANN
Staples	UPS	Sharp's	IHOPE
QUALITY	ME Massage Day	SAFEMART	SUPERCUTS

Dyes Inlet

NW BUCKLIN HILL RD



3208 NW RANDALL WAY

*For more information on
this property, please contact*

BRIAN ENGELKING

Vice President

253722.1418

brian.engelking@kidder.com

KIDDER.COM

This information supplied herein is from sources we deem reliable. It is provided without any representation, warranty, or guarantee, expressed or implied as to its accuracy. Prospective Buyer or Tenant should conduct an independent investigation and verification of all matters deemed to be material, including, but not limited to, statements of income and expenses. Consult your attorney, accountant, or other professional advisor.

km Kidder
Mathews