

# *Pacific Corporate Center*

13555 SE 36th Street, Bellevue, WA 98006

High visibility location along I-90, next to T-Mobile and Eastgate



**NEWMARK**

**JOE LYNCH**

Executive Managing Director  
425.362.1399  
joe.lynych@nrmk.com

**DAN HARDEN**

Senior Managing Director  
425.362.1393  
dan.harden@nrmk.com

# Highlights



Lobby renovation completed Summer 2020



24/7 building security; including, interior/exterior cameras and alarms



Food truck, full service deli and barista  
On-site



Common lunchroom/ cafeteria that may be reserved for private events or functions



Workout facility with mens' and womens' showers and lockers



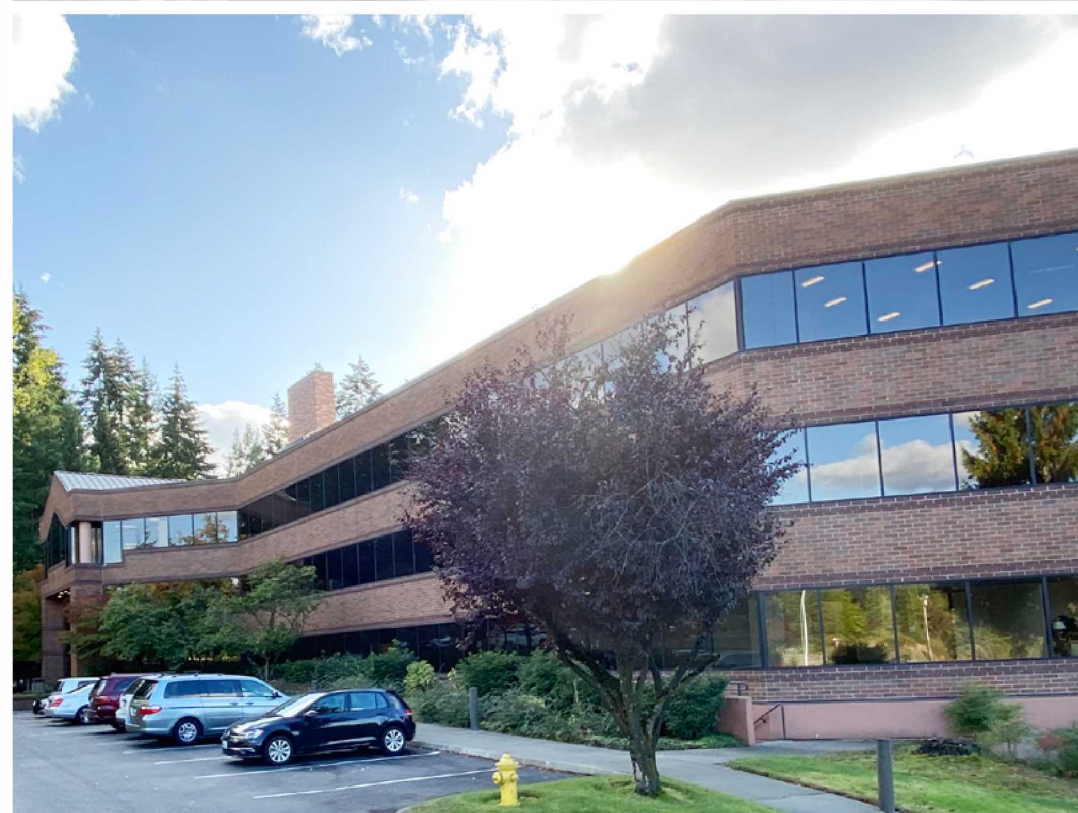
Above average parking ratio of 4.00/1000 SF; Free surface parking, and garage parking at market rates



Building system and electrical power service backed up by generator



Temperature controlled storage space available from 150 to 200 square feet.





# *Renovations*

Completed Summer 2020, all of the common areas and tenant amenities, including the fitness center and common lunchroom, were updated with northwest contemporary finishes for a unique and Class A experience.



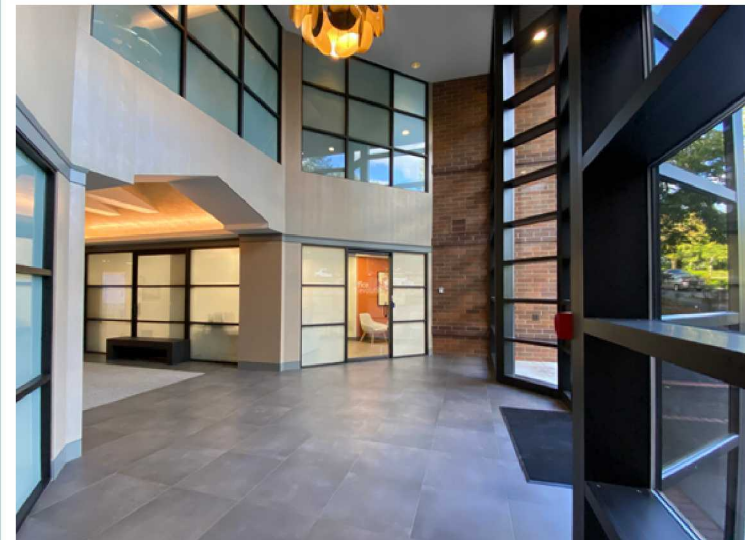
LOBBY VIRTUAL TOUR



FITNESS CENTER VIRTUAL TOUR



CAFETERIA VIRTUAL TOUR



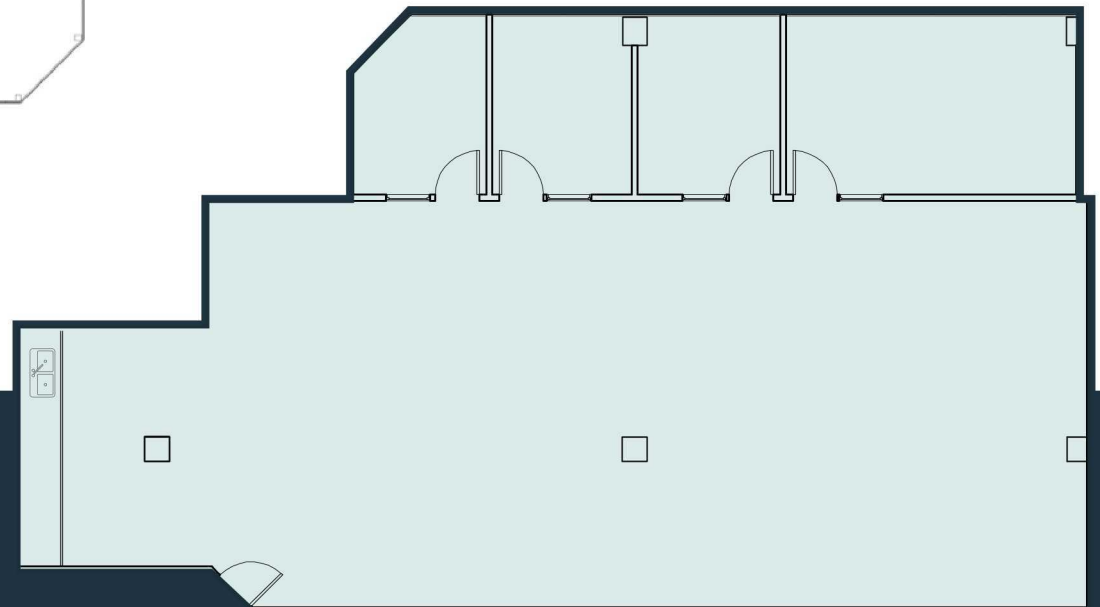
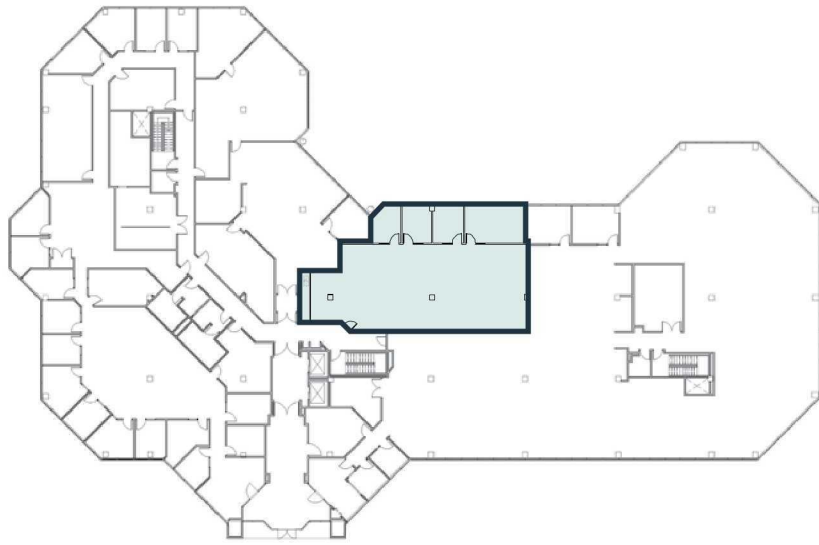
# 1ST FLOOR

Suite 110 • 2,884 RSF

Available Now



SUITE 110 VIRTUAL TOUR



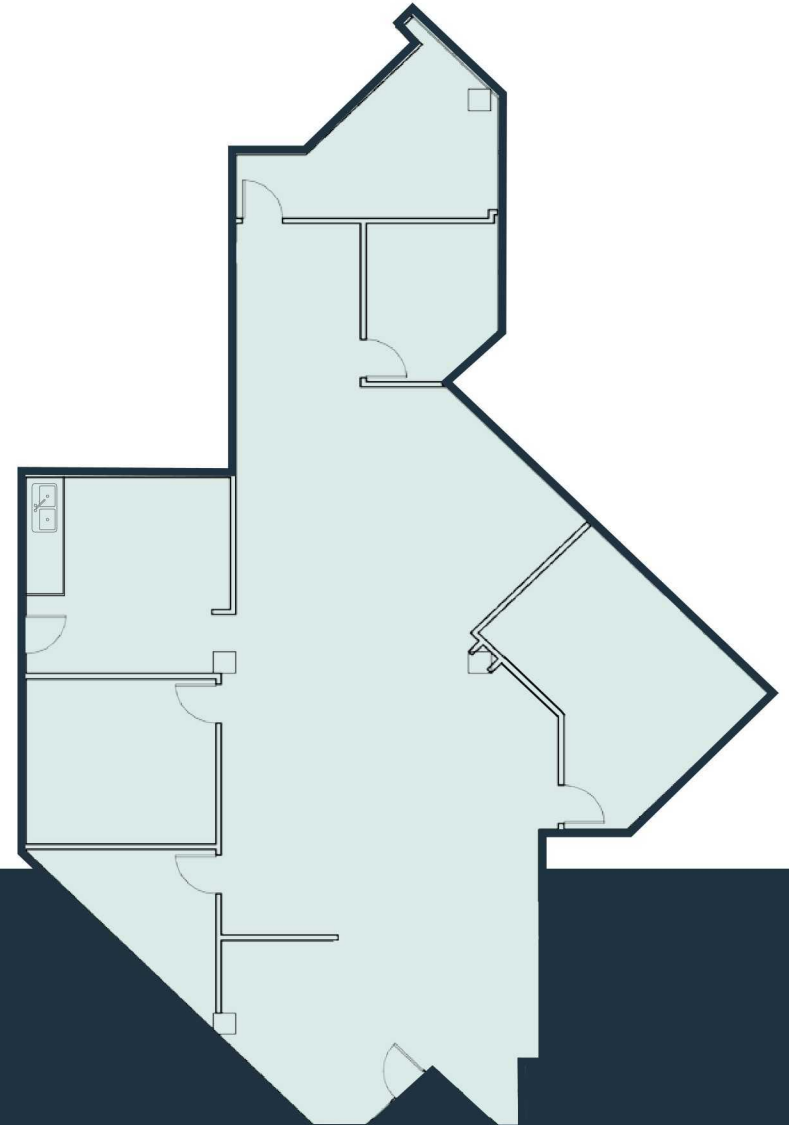
## 2ND FLOOR

Suite 230 • 2,990 RSF

Available Now



SUITE 230 VIRTUAL TOUR



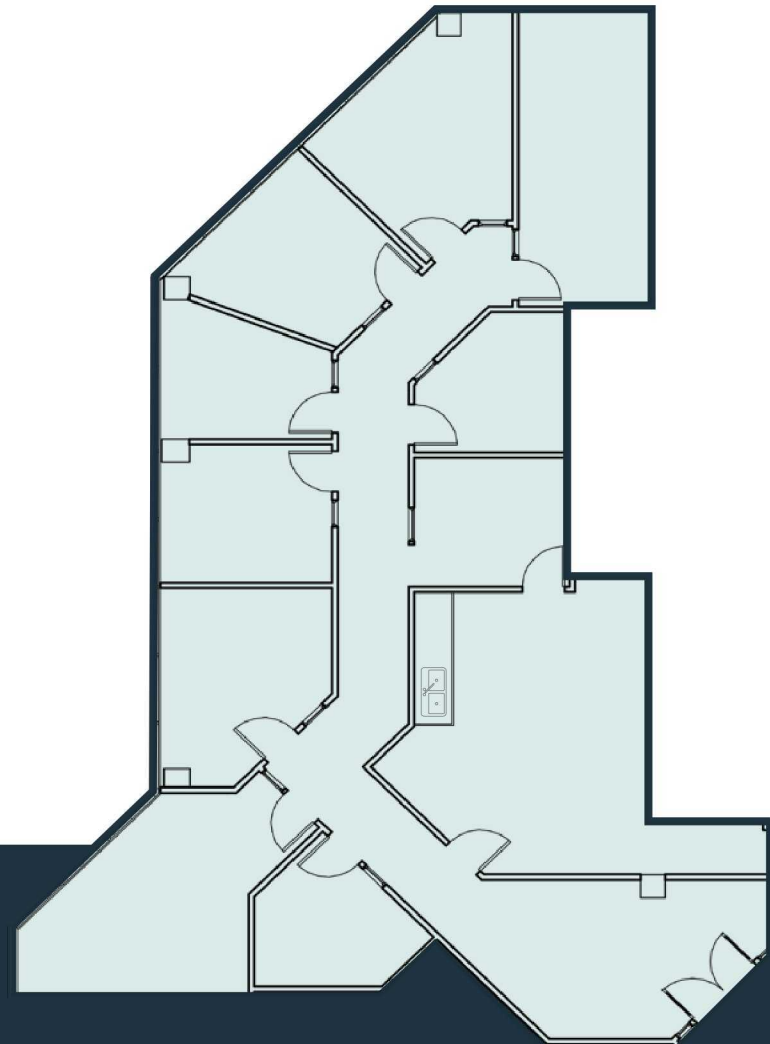
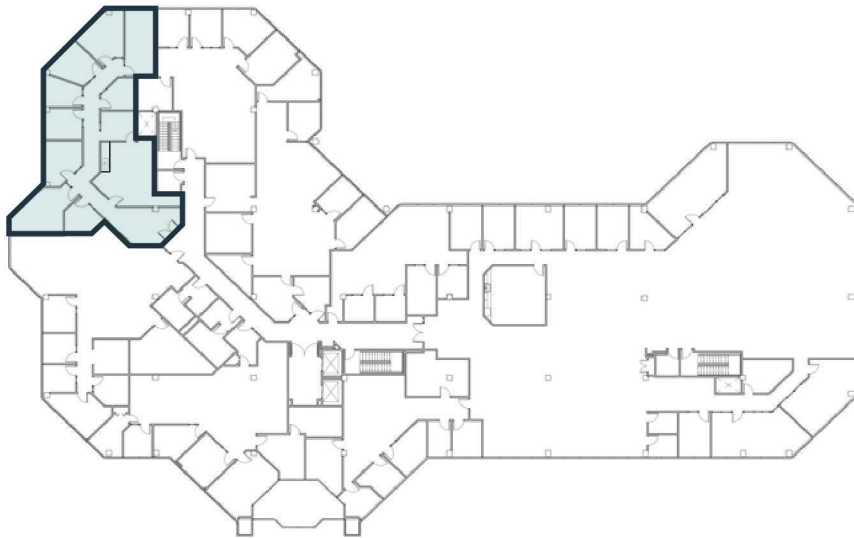
## 2ND FLOOR

Suite 260 • 2,854 RSF

Available Now



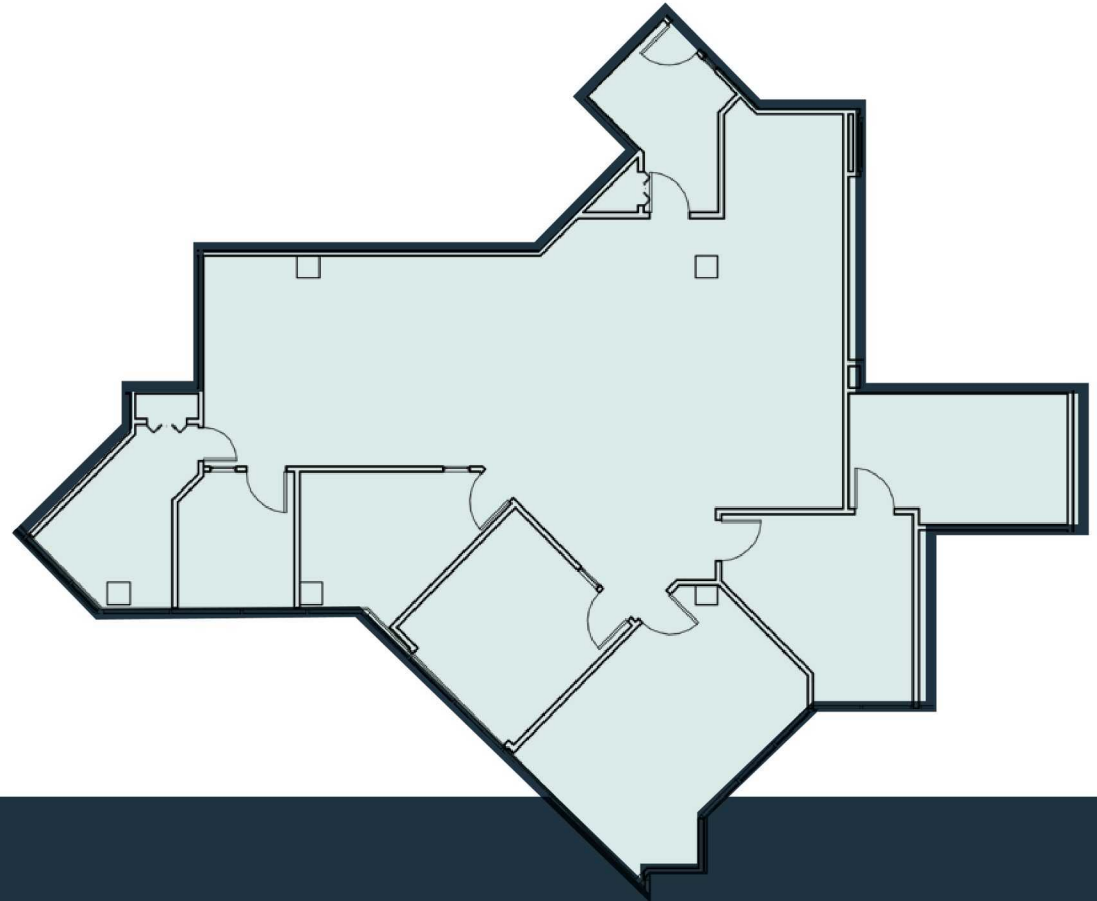
SUITE 260 VIRTUAL TOUR



## 2ND FLOOR

Suite 280 • 2,646 RSF

Available August 1, 2024



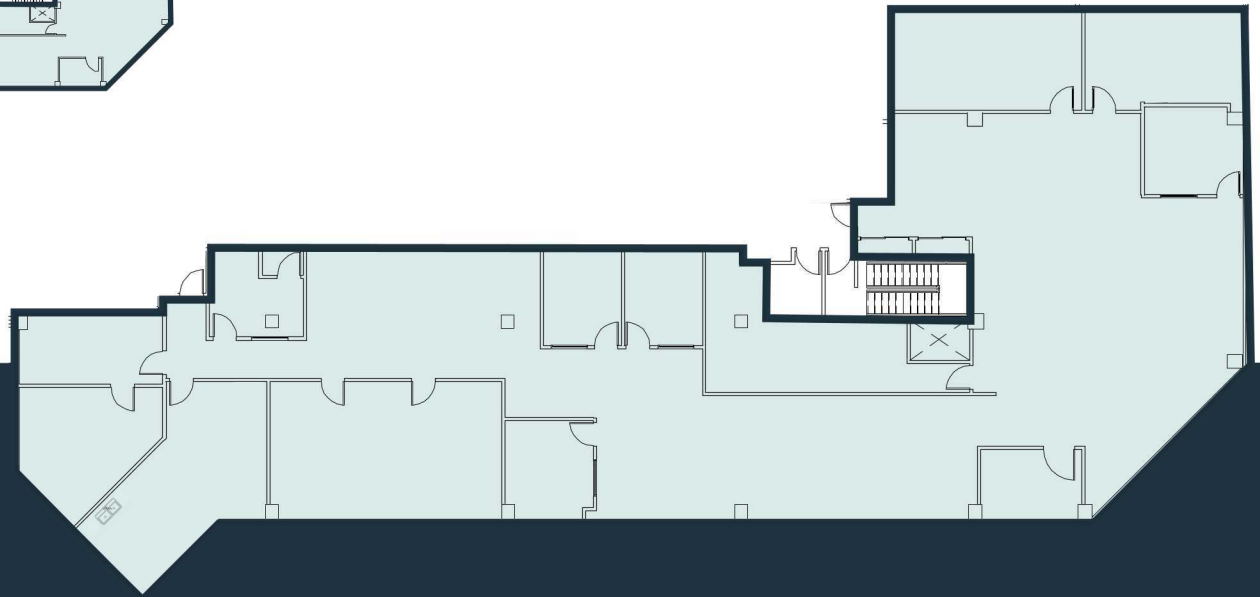
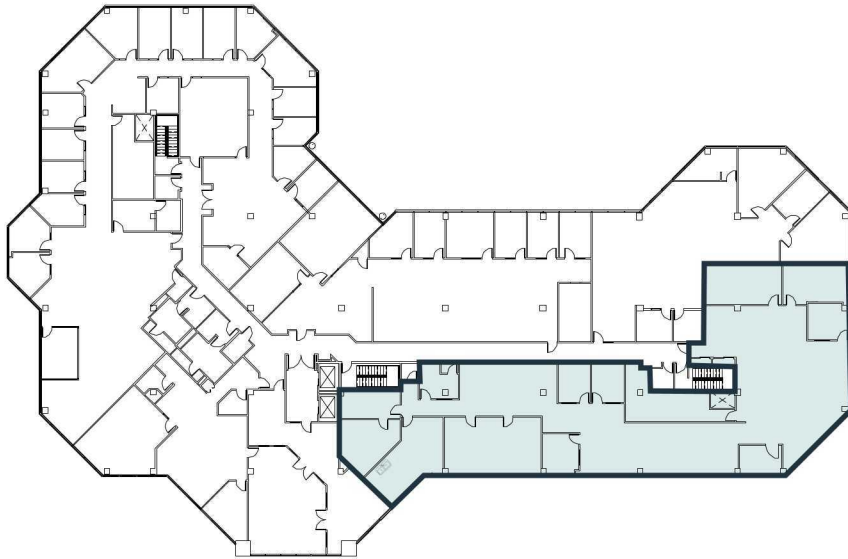
# 3RD FLOOR

Suite 350 • 7,243 RSF

Available Now



SUITE 350 VIRTUAL TOUR





# I-90 AMENITIES MAP

