

OFFICE & FLEX  
SPACES  
AVAILABLE

JOHN F. BUCHAN  
HOMES

# 2821 Northup Way Building

2821 NORTHUP WAY  
BELLEVUE, WA 98004

AVAILABLE SPACE	SIZE	DATE AVAILABLE	COMMENTS
SUITE 100	6,185 RSF	September 1, 2024	FLEX SPACE
SUITE 200	3,091 RSF	DECEMBER 1, 2024	

- + 39.50/SF/Year, Full Service
- + Upgraded finishes throughout the building
- + Prime SR-520 location; freeway visible
- + Park-like setting
- + Parking ratio: 4 stalls per 1,000 RSF
- + Elevator served

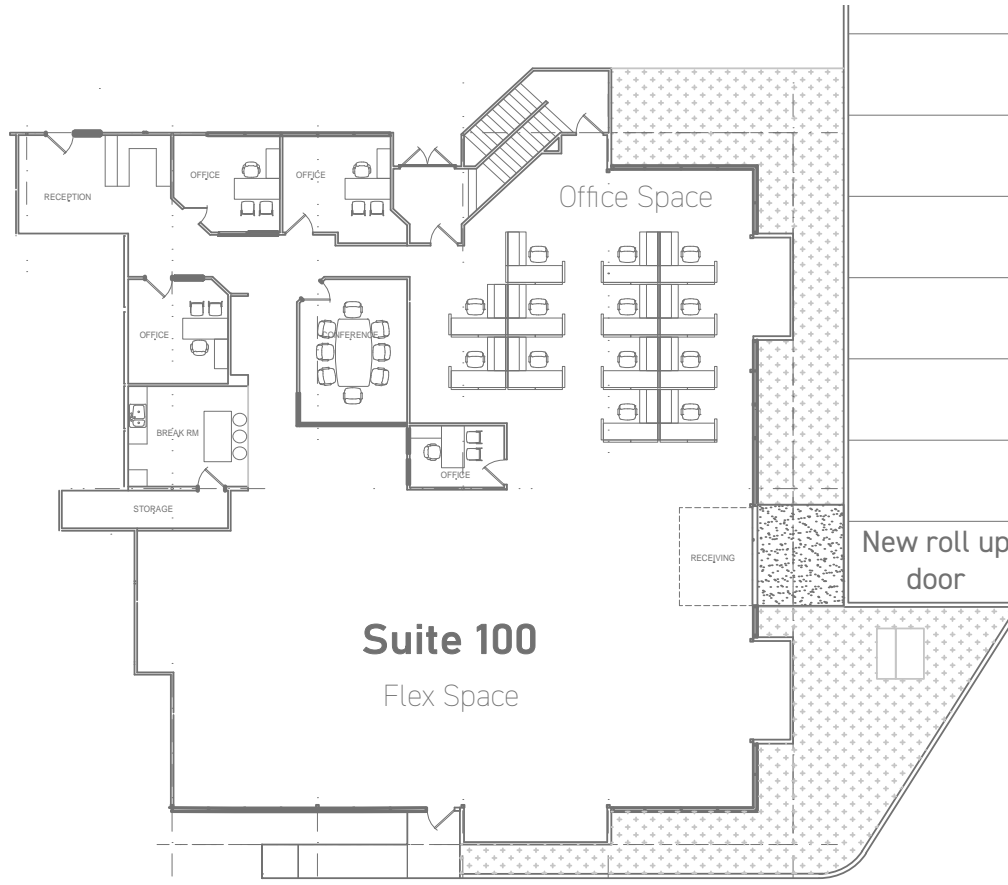
# Office/Flex Space with Roll Up Door

(All New Finishes)

SUITE 100 | ± 6,185 RSF

AVAILABLE SEPTEMBER 1, 2024

---

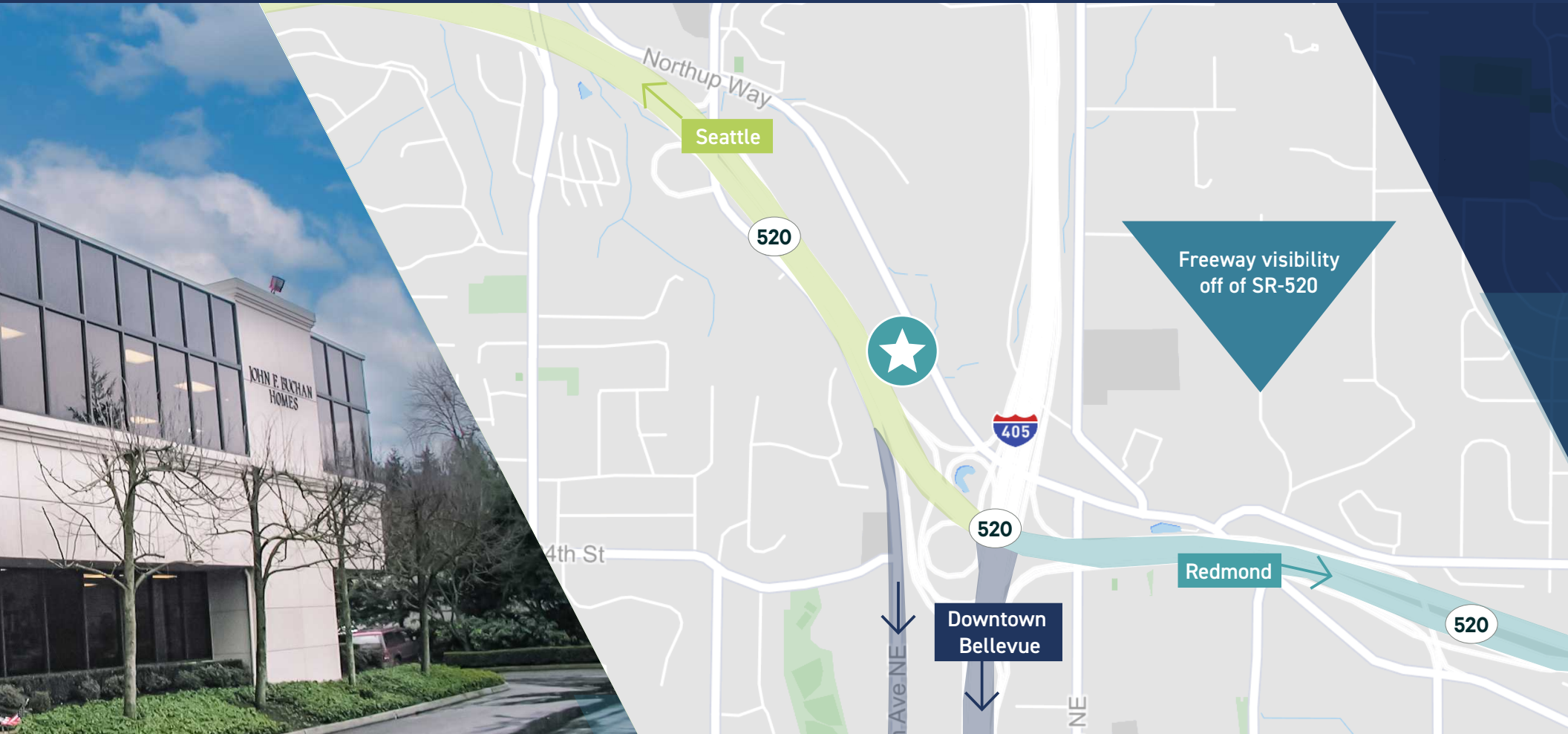


# Office Space

SUITE 200 | ± 3,091 RSF

AVAILABLE DECEMBER 1, 2024





## CONTACT US

**Scott Davis**  
Executive Vice President  
+1 425 941 7573  
scott.davis@cbre.com

**CBRE, Inc.**  
929 108th Ave NE Street  
Suite 700  
Bellevue, WA 98004

**CBRE**

© 2024 CBRE, Inc. All rights reserved. This information has been obtained from sources believed reliable but has not been verified for accuracy or completeness. CBRE, Inc. makes no guarantee, representation or warranty and accepts no responsibility or liability as to the accuracy, completeness, or reliability of the information contained herein. You should conduct a careful, independent investigation of the property and verify all information. Any reliance on this information is solely at your own risk. CBRE and the CBRE logo are service marks of CBRE, Inc. All other marks displayed on this document are the property of their respective owners, and the use of such marks does not imply any affiliation with or endorsement of CBRE. Photos herein are the property of their respective owners. Use of these images without the express written consent of the owner is prohibited.  
DW 5.14.2024