

# OVERLAKE MEDICAL TOWER

Rare Class A Core Medical  
Office Space for Lease

1135 116TH AVE NE, BELLEVUE, WA 98004



FOR LEASE

# Overlake Medical Tower

1135 116TH AVE NE, BELLEVUE, WA 98004



## Features

Class A medical suite available in Bellevue's Medical Corridor

**LOCATED** just off I-405

**NEAR** the future Wilburton Light Rail Station

**ADJACENT** to Bellevue CBD amenities

## AVAILABLE

Suite 105    1,105 SF

**GARY GUENTHER**

425.450.1154

[gary.guenther@kidder.com](mailto:gary.guenther@kidder.com)

**CHARLES CAPLICE**

425.450.1160

[charles.caplice@kidder.com](mailto:charles.caplice@kidder.com)

KIDDER.COM

This information supplied herein is from sources we deem reliable. It is provided without any representation, warranty, or guarantee, expressed or implied as to its accuracy. Prospective Buyer or Tenant should conduct an independent investigation and verification of all matters deemed to be material, including, but not limited to, statements of income and expenses. Consult your attorney, accountant, or other professional advisor.

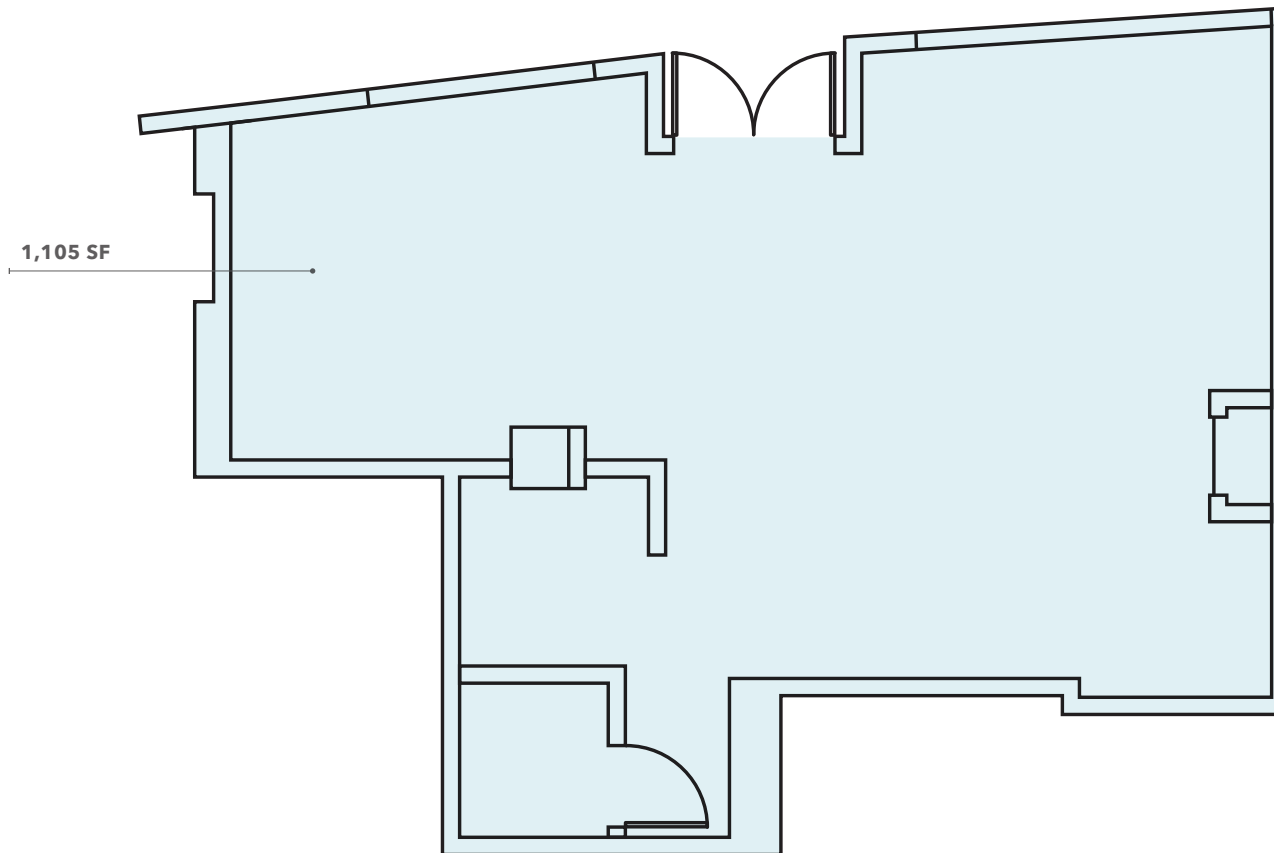
**km** Kidder Mathews

**FOR LEASE**

# Overlake Medical Tower

1135 116TH AVE NE, BELLEVUE, WA 98004

## Suite 105



### Suite 105

**AVAILABLE** with 30-60 days' notice

**1,105 SF** total

**LEASE RATE** \$40.00/SF, NNN

**SECOND GENERATION** pharmacy space (Walgreens)

**FIRST FLOOR** lobby exposure

**COMPOUNDING** area potential

**GARY GUENTHER**  
425.450.1154  
[gary.guenther@kidder.com](mailto:gary.guenther@kidder.com)

**CHARLES CAPLICE**  
425.450.1160  
[charles.caplice@kidder.com](mailto:charles.caplice@kidder.com)

**KIDDER.COM**

This information supplied herein is from sources we deem reliable. It is provided without any representation, warranty, or guarantee, expressed or implied as to its accuracy. Prospective Buyer or Tenant should conduct an independent investigation and verification of all matters deemed to be material, including, but not limited to, statements of income and expenses. Consult your attorney, accountant, or other professional advisor.





**For leasing  
information  
contact**

**GARY GUENTHER**  
425.450.1154

[gary.guenther@kidder.com](mailto:gary.guenther@kidder.com)

**CHARLES CAPLICE**  
425.450.1160

[charles.caplice@kidder.com](mailto:charles.caplice@kidder.com)

[KIDDER.COM](http://KIDDER.COM)

This information supplied herein is from sources we deem reliable. It is provided without any representation, warranty, or guarantee, expressed or implied as to its accuracy. Prospective Buyer or Tenant should conduct an independent investigation and verification of all matters deemed to be material, including, but not limited to, statements of income and expenses. Consult your attorney, accountant, or other professional advisor.