

SPACE FOR LEASE

Located in Spokane's Central Business District



US BANK BUILDING

422 W Riverside Avenue | Spokane, Washington

LEASING INQUIRIES

DINA COLE
509.755.7502 dina.cole@kiemlehagood.com

KIEMLE
HAGOOD

US BANK BUILDING

422 W Riverside Avenue | Spokane, Washington



SUITE # RENTABLE SF

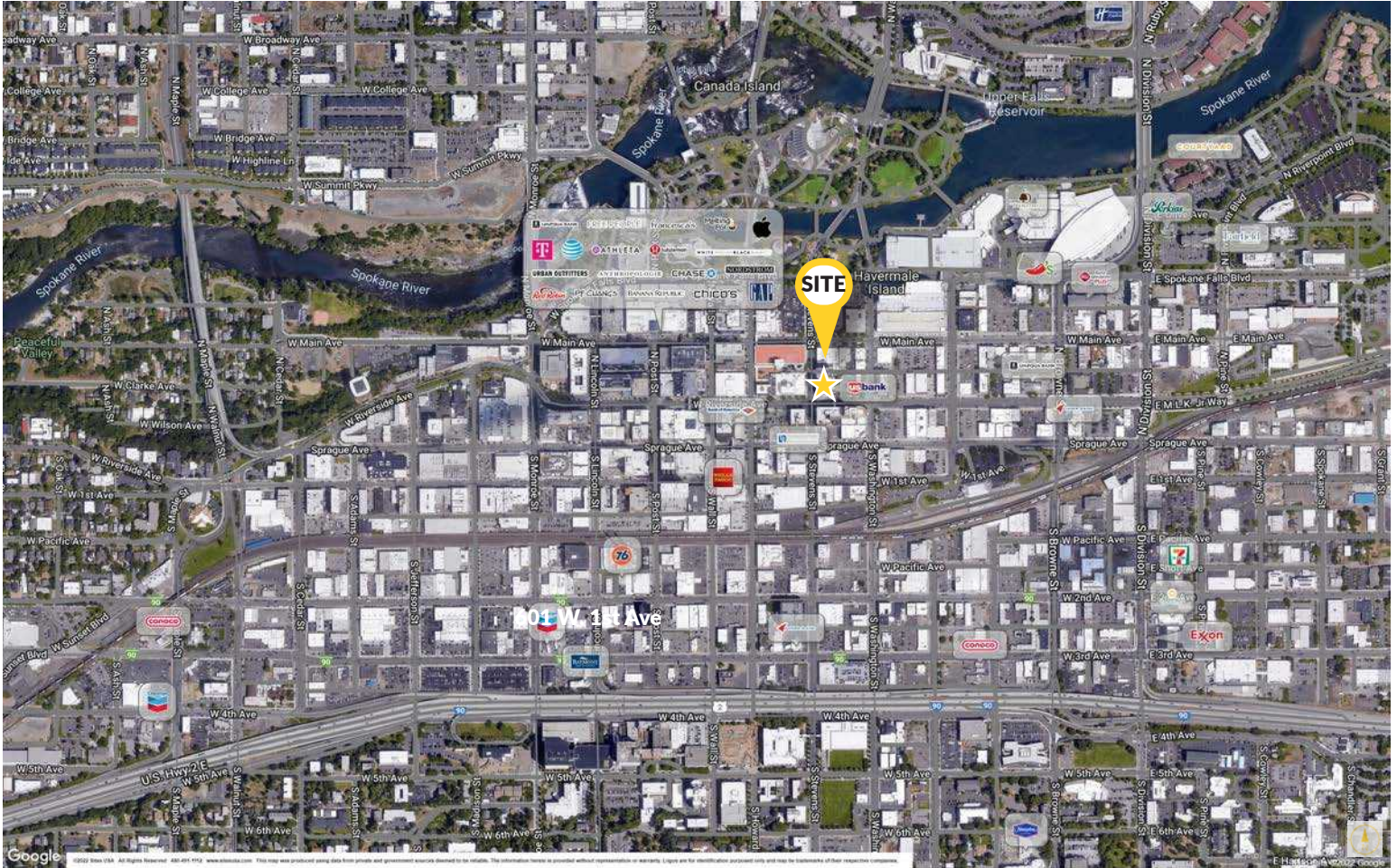
101	4,433 RSF
102	294 RSF
103	5,555 RSF
304	3,997 RSF
408	10,960 RSF
501	1,926 RSF
601	802 RSF
608	3,125 RSF
628	634 RSF
700	5,509 RSF
722	2,397 RSF
730	1,369 RSF
800	5,690 RSF
820	2,438 RSF
830	910 RSF
920	3,082 RSF
931	763 RSF
1000	10,967 RSF
1100	10,967 RSF
1310	4,905 RSF
1330	479 RSF

PROPERTY HIGHLIGHTS

- Prestigious Address
- Building located in Skywalk System
- Five Building Elevators
- Key-Card Controlled Access / Security Building
- Available Building Conference Rooms
- 24/7 Fitness Center with Lockers and Showers
- Storage Space Available
- Located in Terabyte Triangle
- Multiple Fiber Providers
- Space Planning Available

US BANK BUILDING

422 W Riverside Avenue | Spokane, Washington

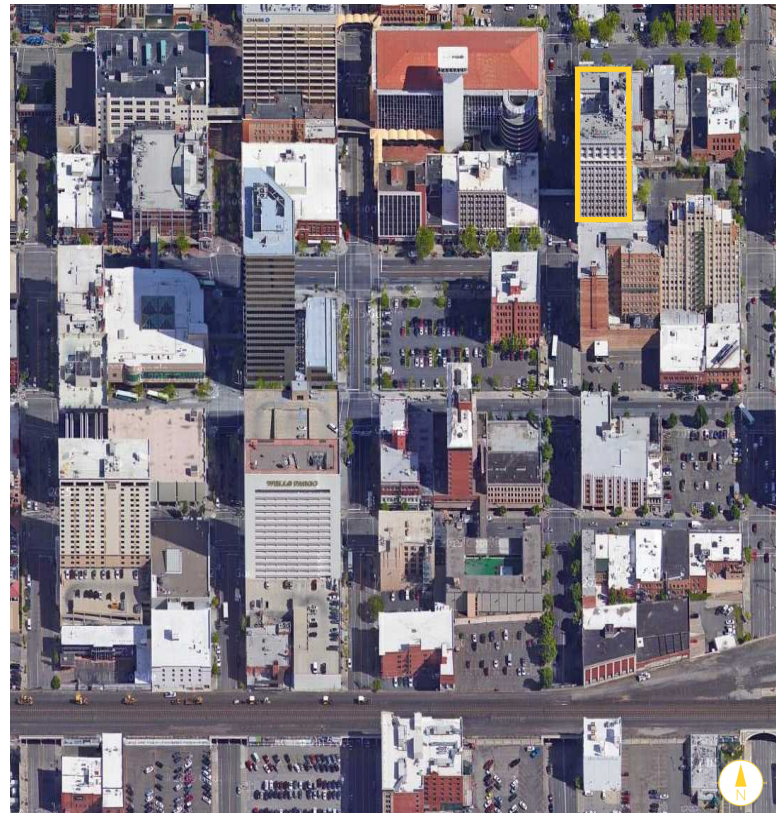


EXCELLENT DOWNTOWN LOCATION

- Close to numerous restaurants, lodging, shopping and entertainment venues.
- Easy access to I-90
- Close to Medical Centers

No warranty or representation, expressed or implied, is made by Kiemle Hagood its agents or its employees as to the accuracy of the information contained herein. All information furnished is from sources deemed reliable and submitted subject to errors, omissions, change of terms and conditions, prior sale, lease or financing, or withdrawal without notice. No one should rely solely on the above information, but instead should conduct their own investigation to independently satisfy themselves.

Kiemle Hagood respects the intellectual property of others:
If you believe the copyright in your work has been violated through this Website, please contact our office for notice of claims of copyright infringement. For your complaint to be valid under the Digital Millennium Copyright Act of 1998 (DMCA), you must provide the following information when providing notice of the claimed copyright infringement: Identify the material on the Website that you believe infringes your work, with enough detail so that we may locate it on the Website; provide your address, telephone number and email address; provide a statement that you have a good faith belief that the disputed use is not authorized by the copyright owner, its agent, or the law; provide a statement that the information in the notification is accurate, and under penalty of perjury, that the complaining party is authorized to act on behalf of owner of an exclusive right that is allegedly infringed; provide your physical or electronic signature. Upon receiving your complaint, Kiemle Hagood will, upon review, remove content that you believe infringes your copyright if the complaint is found valid.

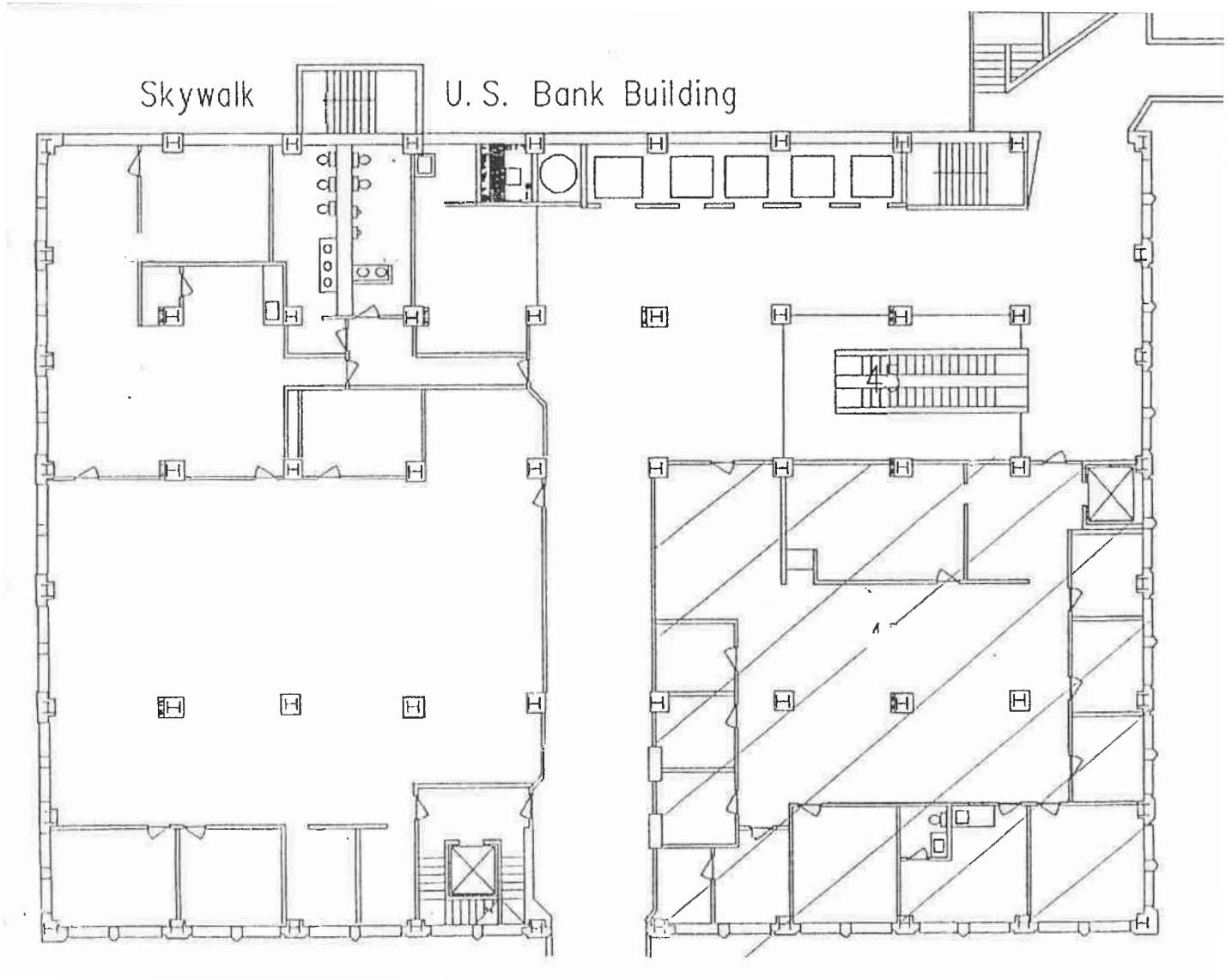


US BANK BUILDING

422 W Riverside Avenue | Spokane, Washington

SUITE 101

±4,433 RSF



LEASING INQUIRIES

DINA COLE

509.755.7502 dina.cole@kiemlehagood.com

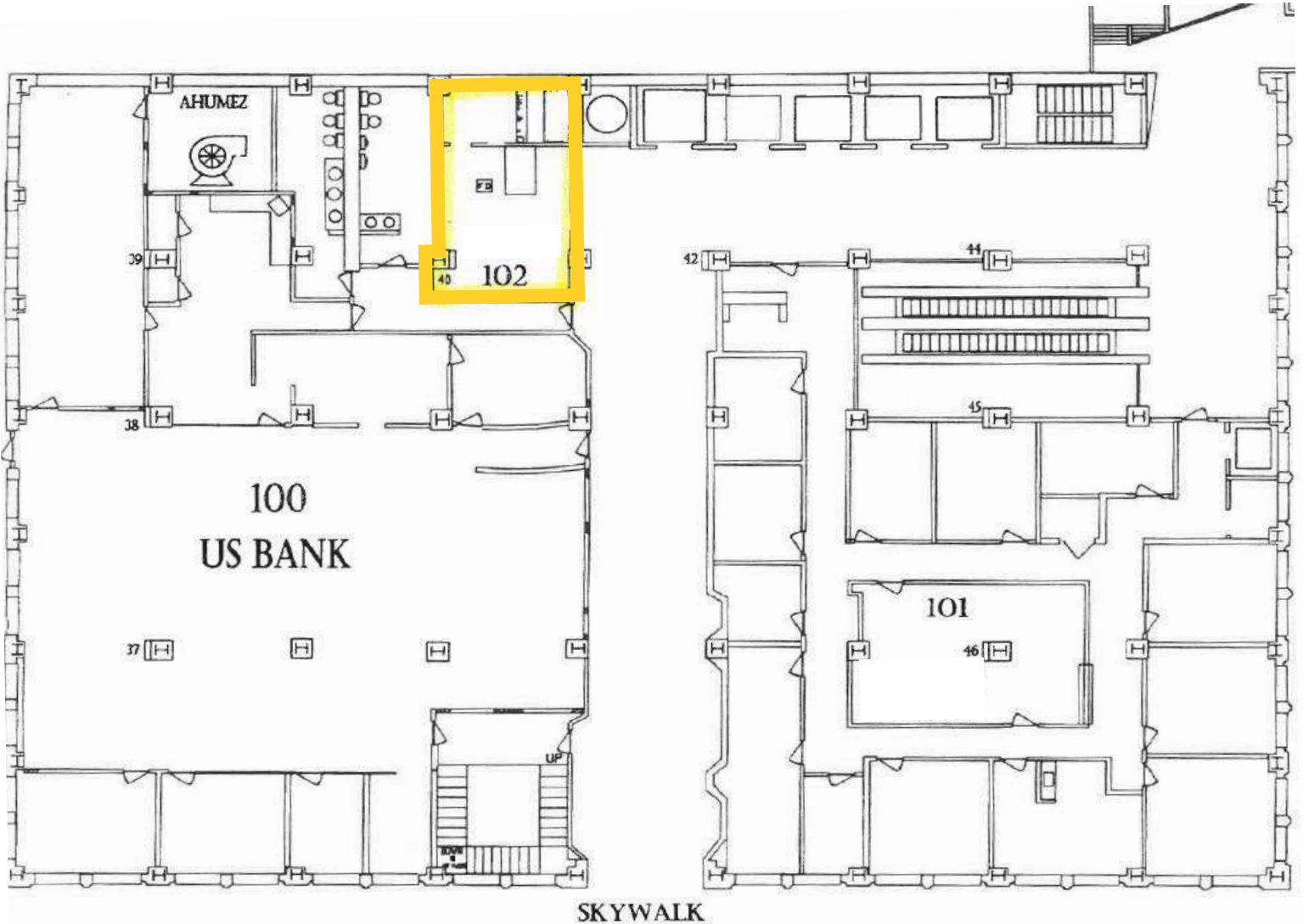
**KIEMLE
HAGOOD**

US BANK BUILDING

422 W Riverside Avenue | Spokane, Washington

SUITE 102

±294 RSF



LEASING INQUIRIES

DINA COLE

509.755.7502 dina.cole@kiemlehagood.com

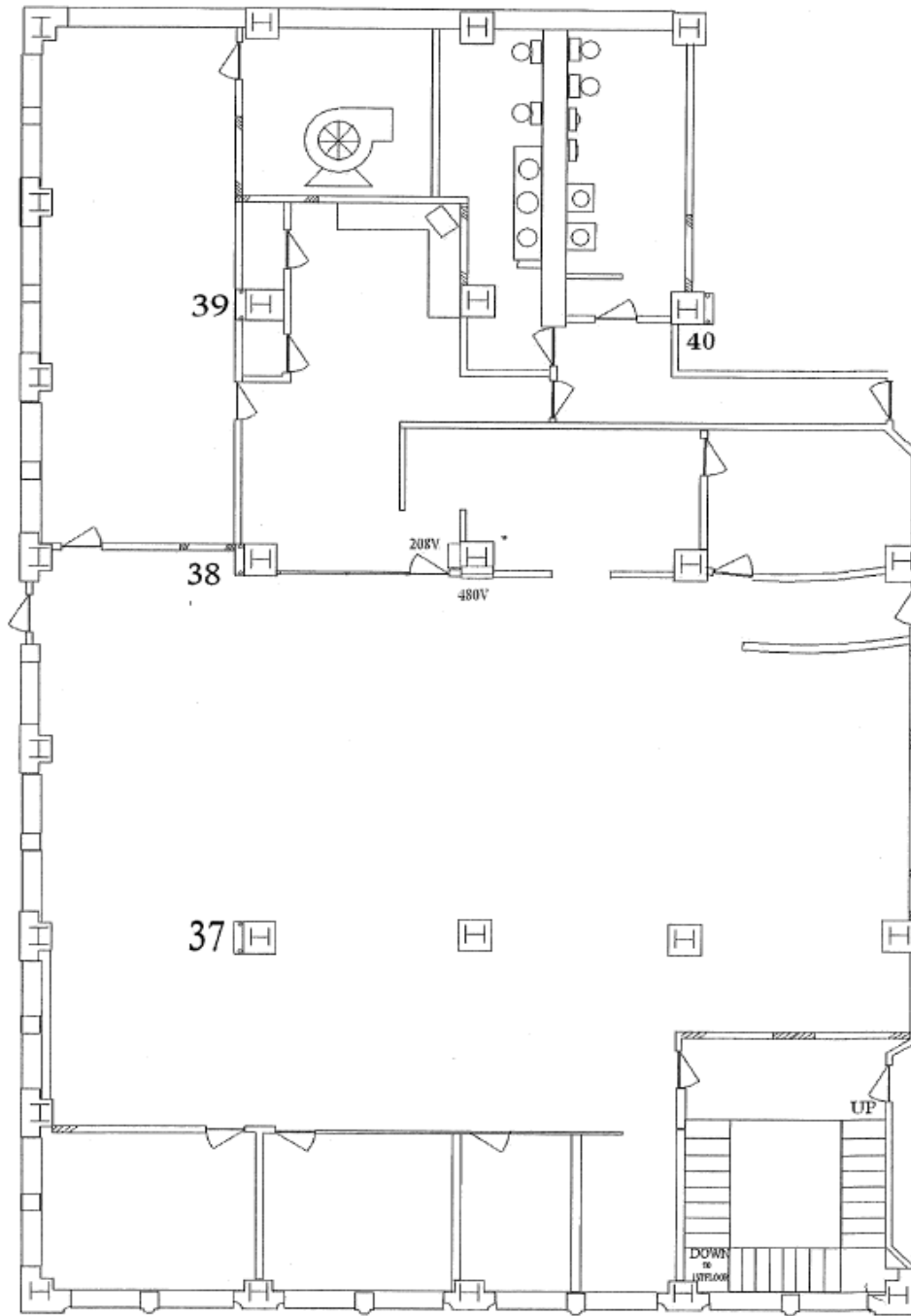
**KIEMLE
HAGOOD**

US BANK BUILDING

422 W Riverside Avenue | Spokane, Washington

SUITE 103

±5,555 RSF (Skywalk Space)



LEASING INQUIRIES

DINA COLE
509.755.7502 dina.cole@kiemlehagood.com

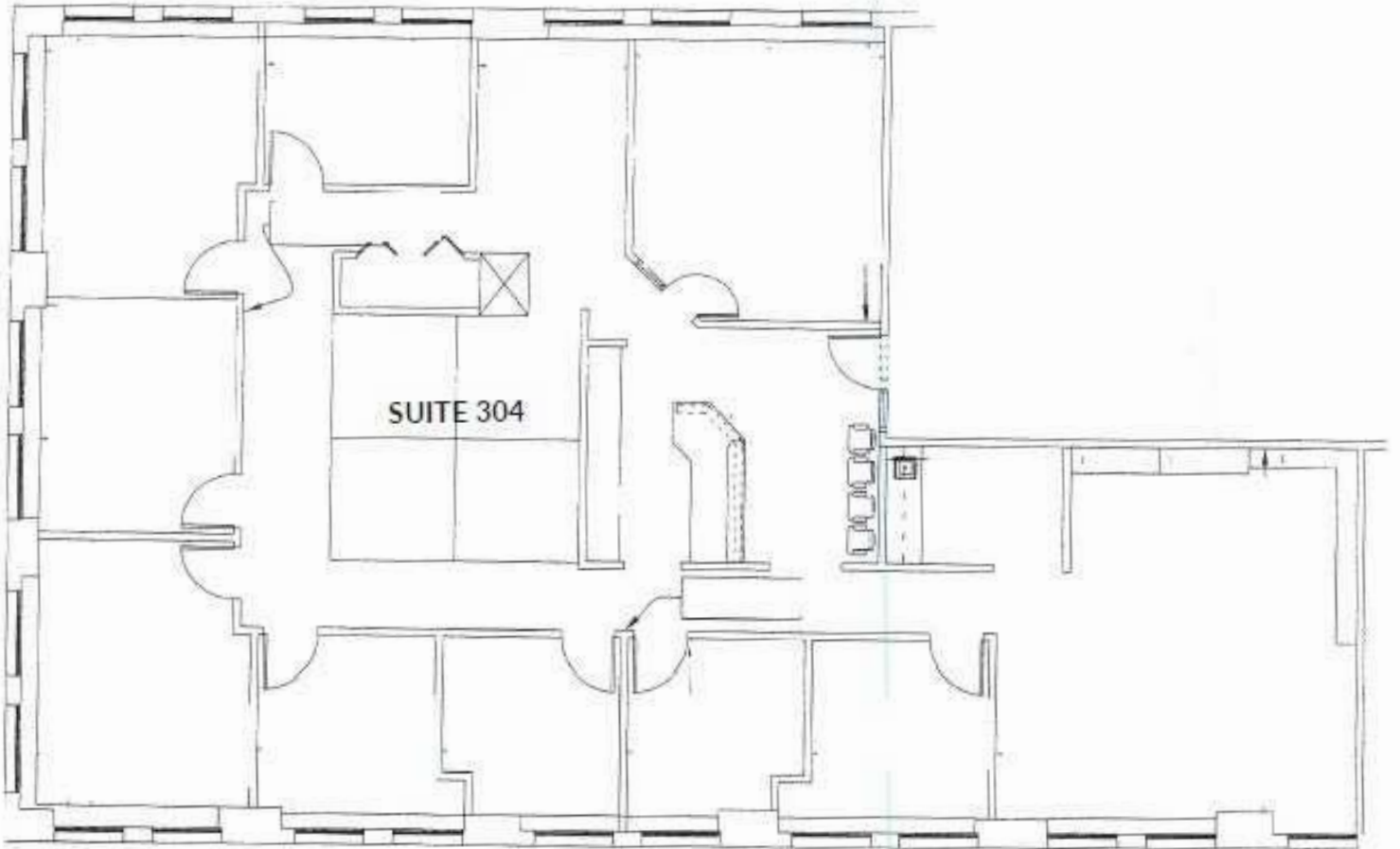


US BANK BUILDING

422 W Riverside Avenue | Spokane, Washington

SUITE 304

±3,997 RSF



LEASING INQUIRIES

DINA COLE

509.755.7502 dina.cole@kiemlehagood.com

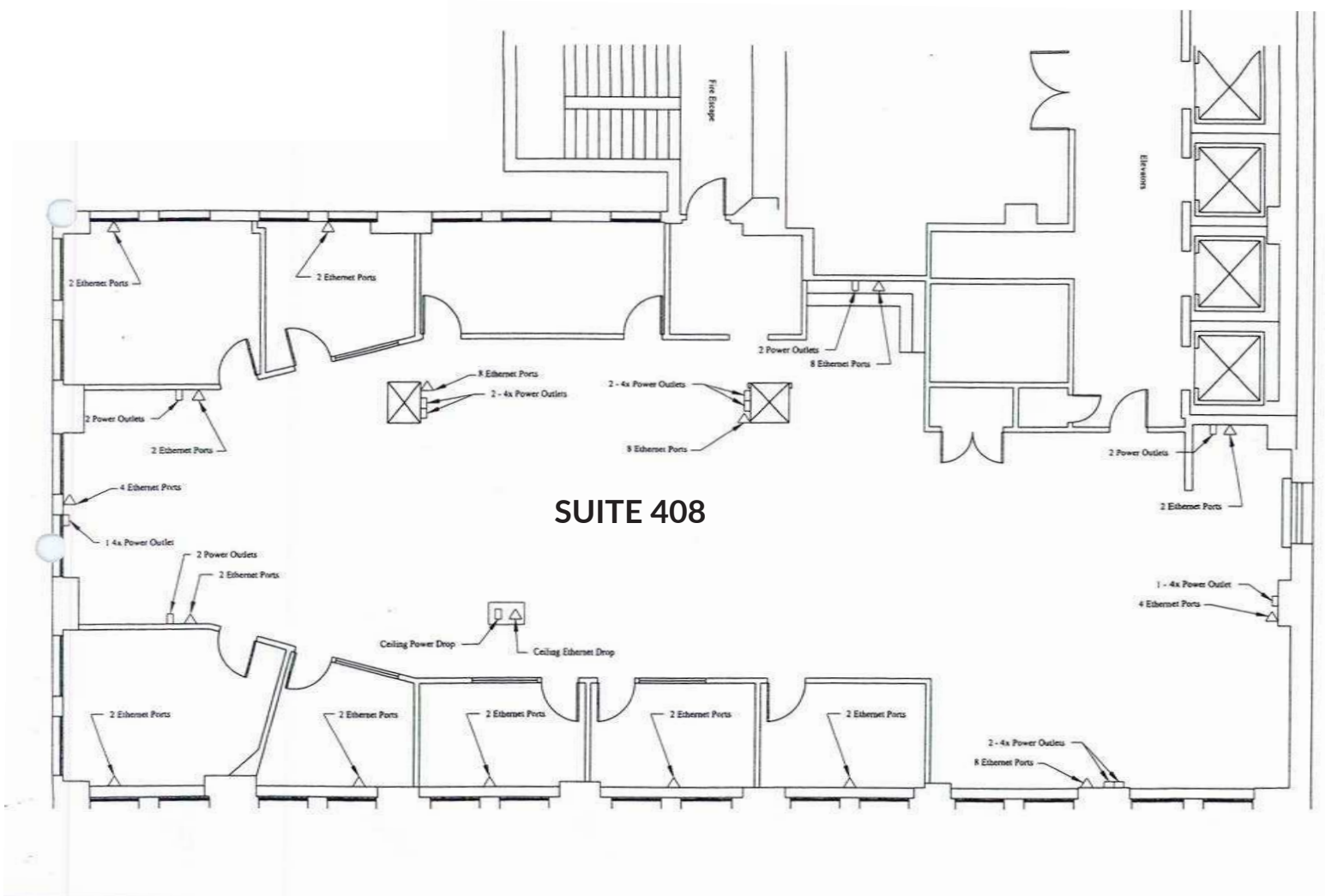
**KIEMLE
HAGOOD**

US BANK BUILDING

422 W Riverside Avenue | Spokane, Washington

SUITE 408

±10,960 RSF



LEASING INQUIRIES

DINA COLE

509.755.7502 dina.cole@kiemlehagood.com

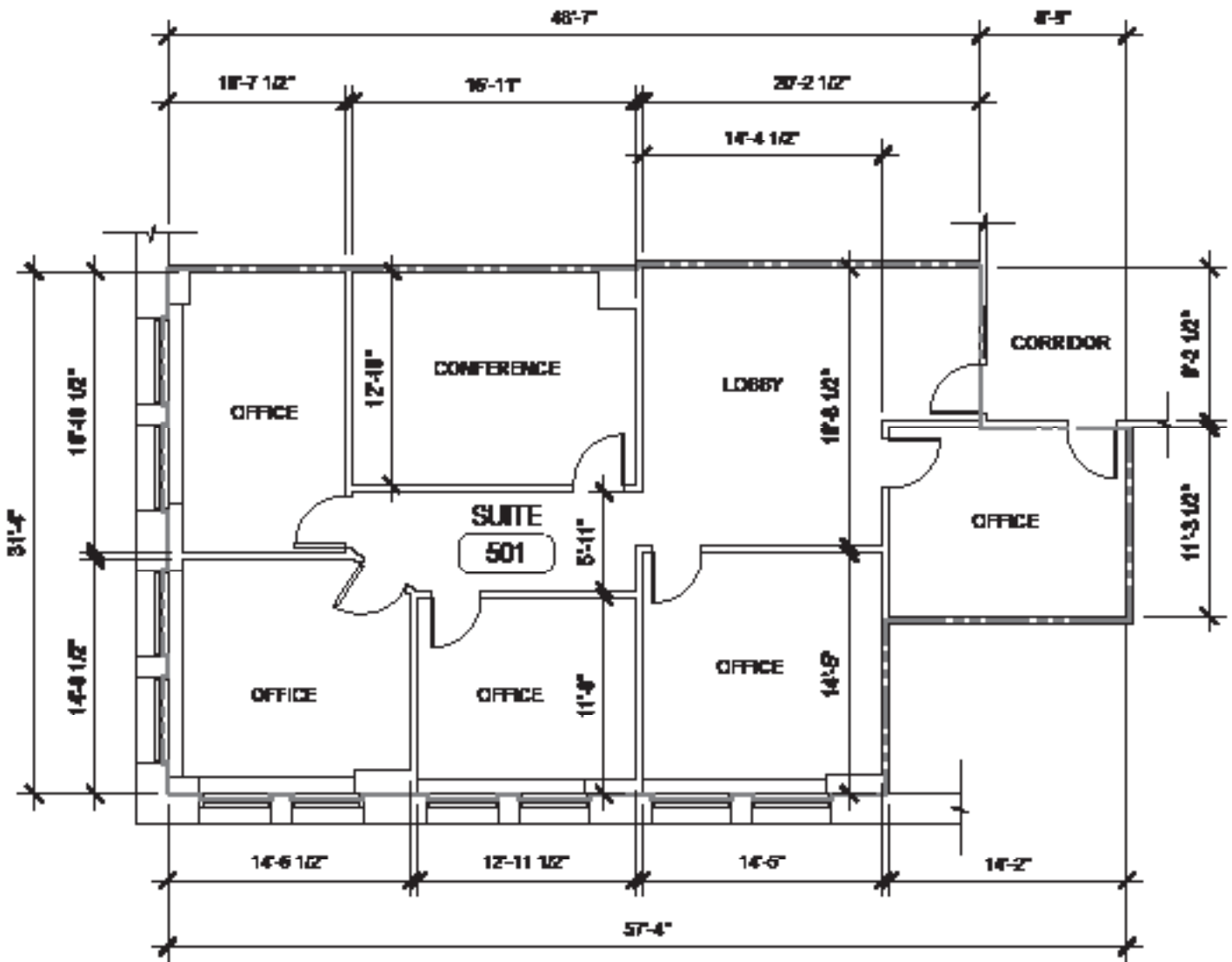
**KIEMLE
HAGOOD**

US BANK BUILDING

422 W Riverside Avenue | Spokane, Washington

SUITE 501

±1,597 RSF



LEASING INQUIRIES

DINA COLE

509.755.7502 dina.cole@kiemlehagood.com

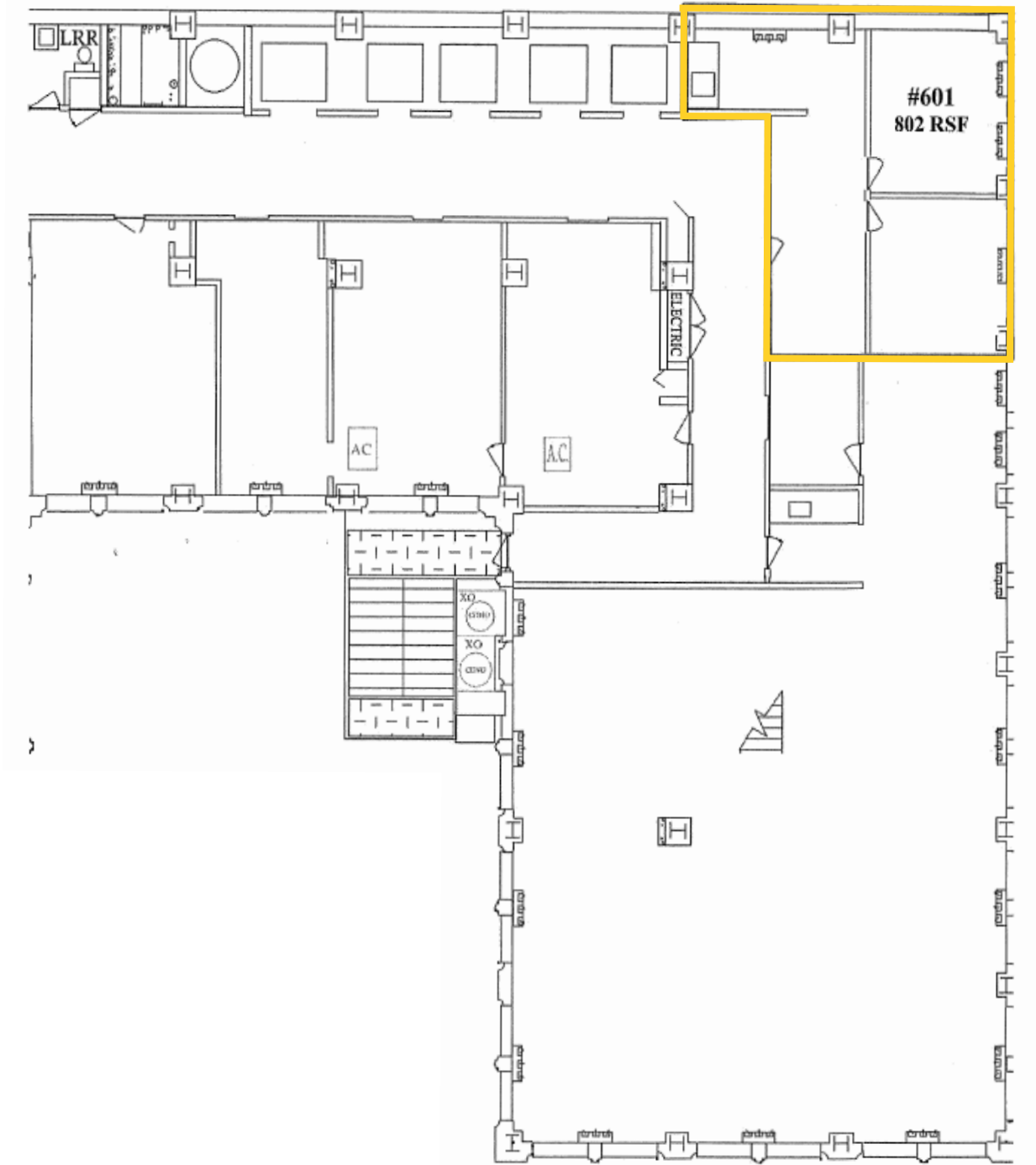
**KIEMLE
HAGOOD**

US BANK BUILDING

422 W Riverside Avenue | Spokane, Washington

SUITE 601

±802 RSF



LEASING INQUIRIES

DINA COLE
509.755.7502 dina.cole@kiemlehagood.com

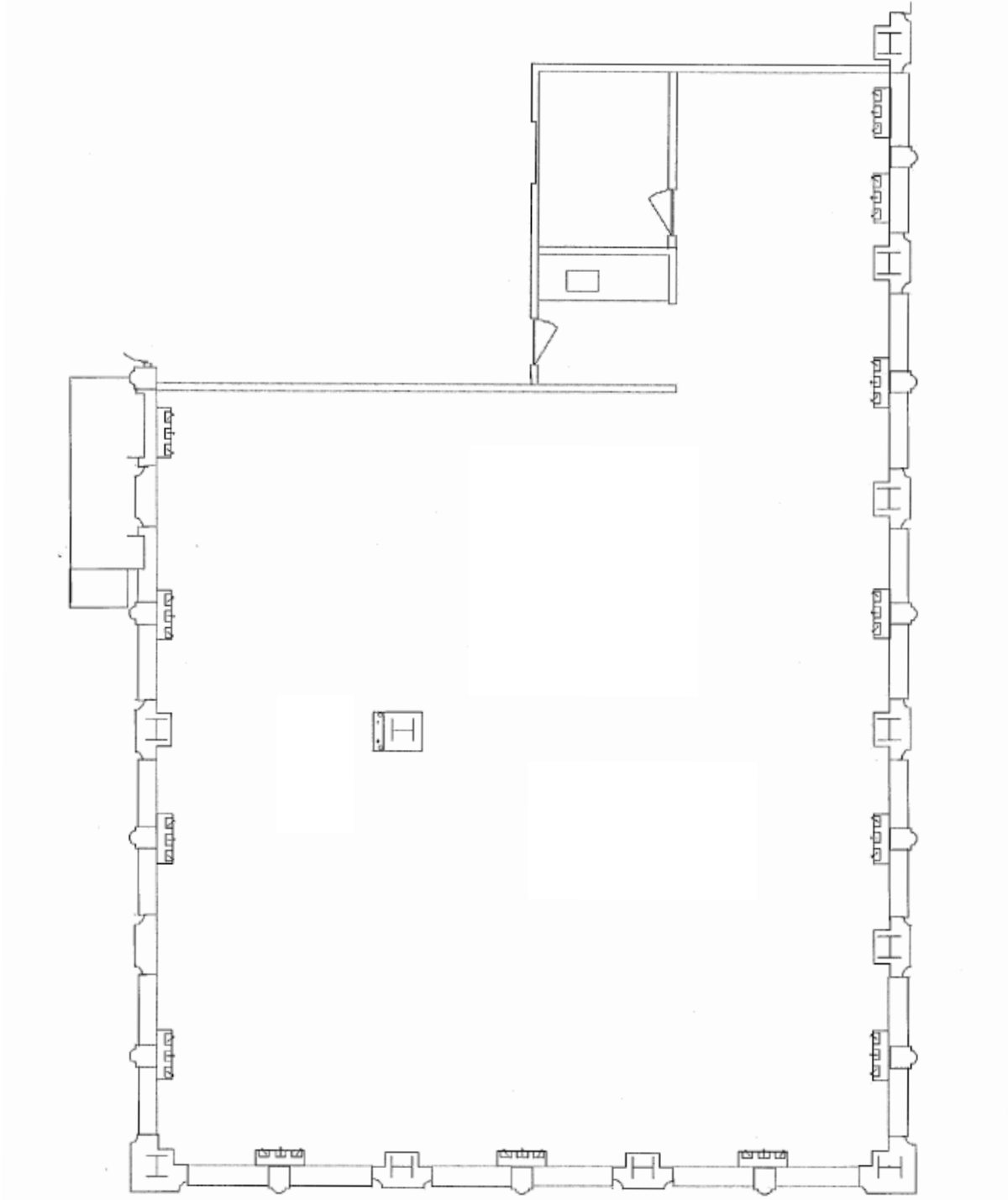
**KIEMLE
HAGOOD**

US BANK BUILDING

422 W Riverside Avenue | Spokane, Washington

SUITE 608

±3,125 RSF



LEASING INQUIRIES

DINA COLE

509.755.7502 dina.cole@kiemlehagood.com

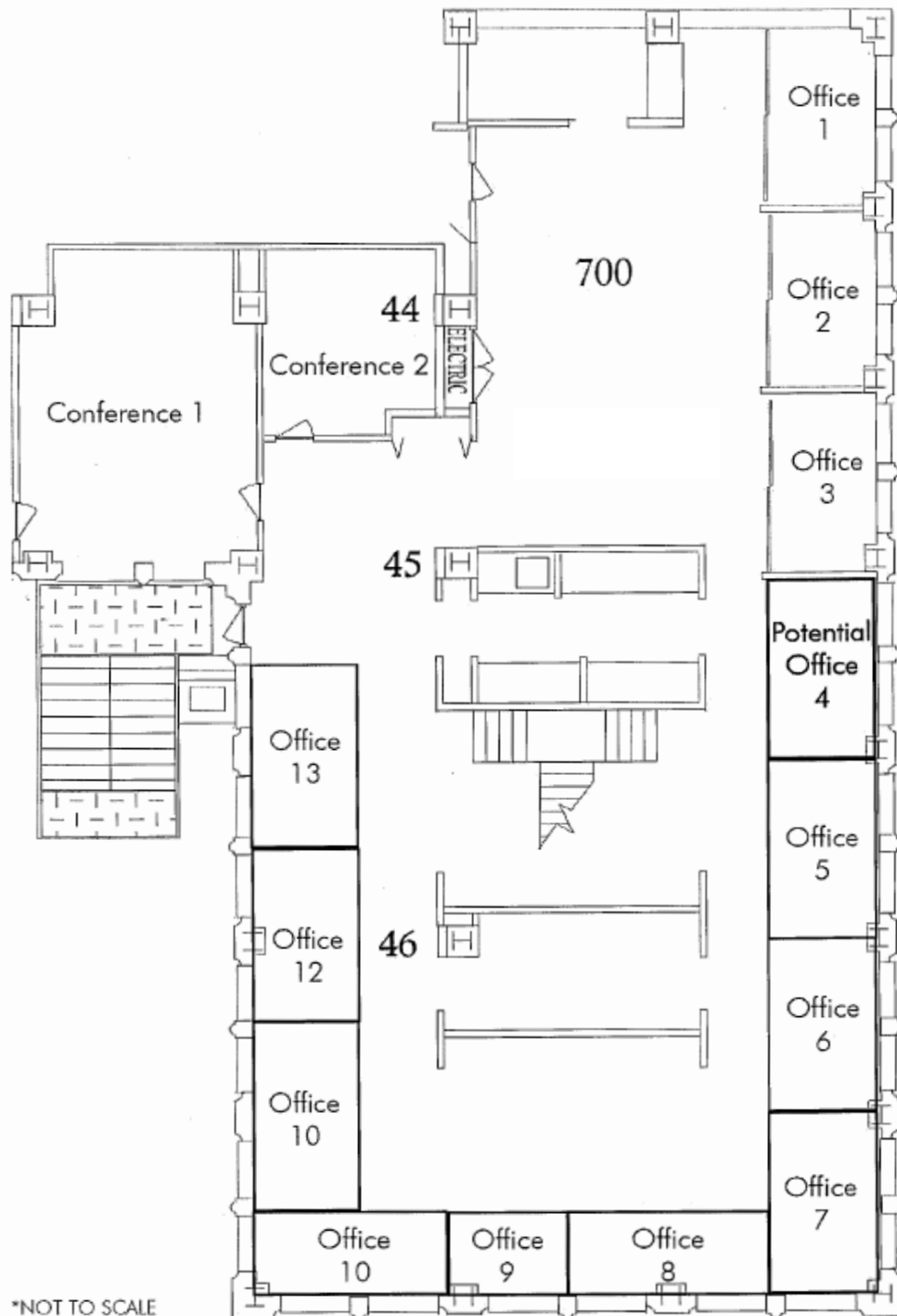
**KIEMLE
HAGOOD**

US BANK BUILDING

422 W Riverside Avenue | Spokane, Washington

SUITE 700

±5,509 RSF



LEASING INQUIRIES

DINA COLE

509.755.7502 dina.cole@kiemlehgagood.com

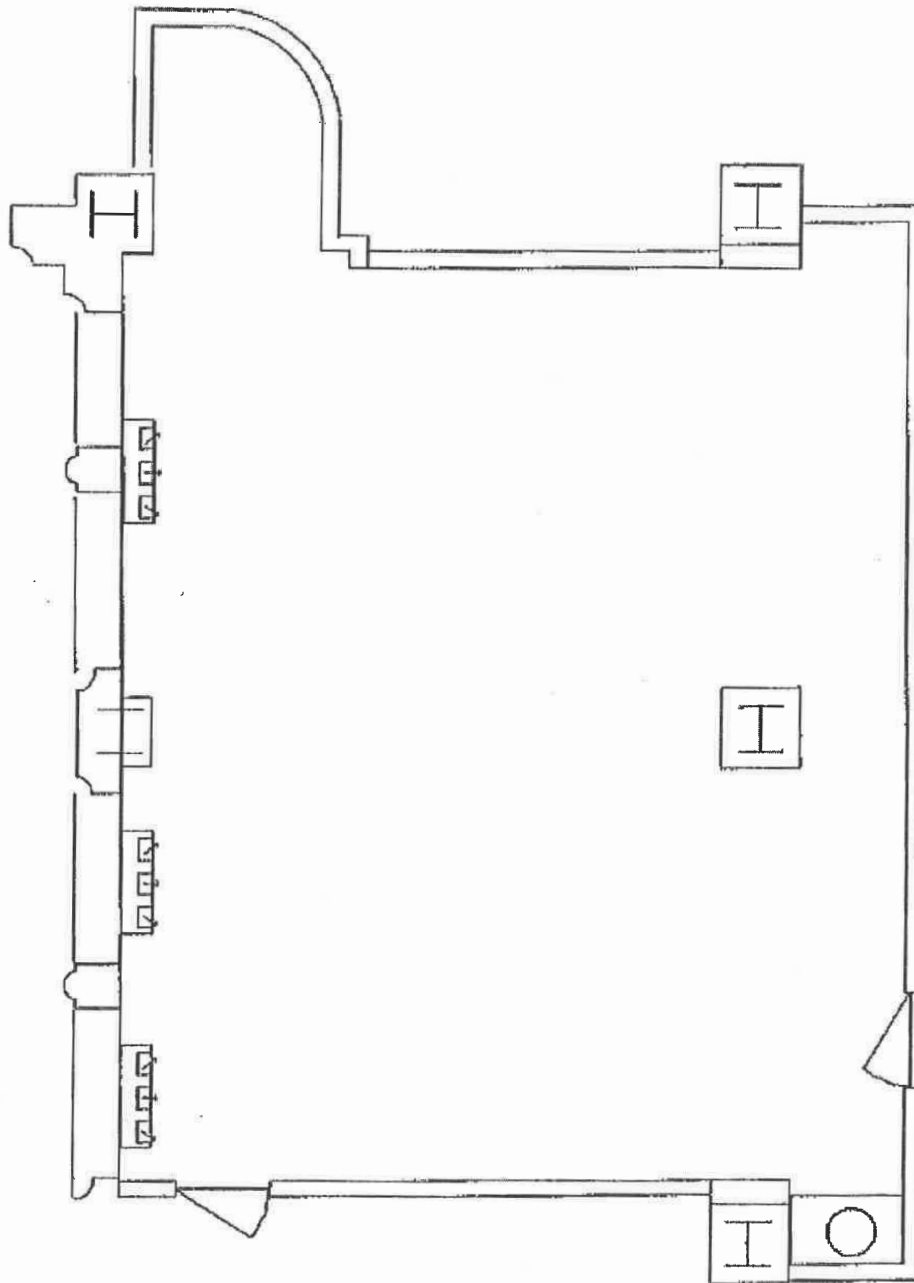
**KIEMLE
HAGOOD**

US BANK BUILDING

422 W Riverside Avenue | Spokane, Washington

SUITE 714

±2,397 RSF



LEASING INQUIRIES

DINA COLE

509.755.7502 dina.cole@kiemlehagood.com

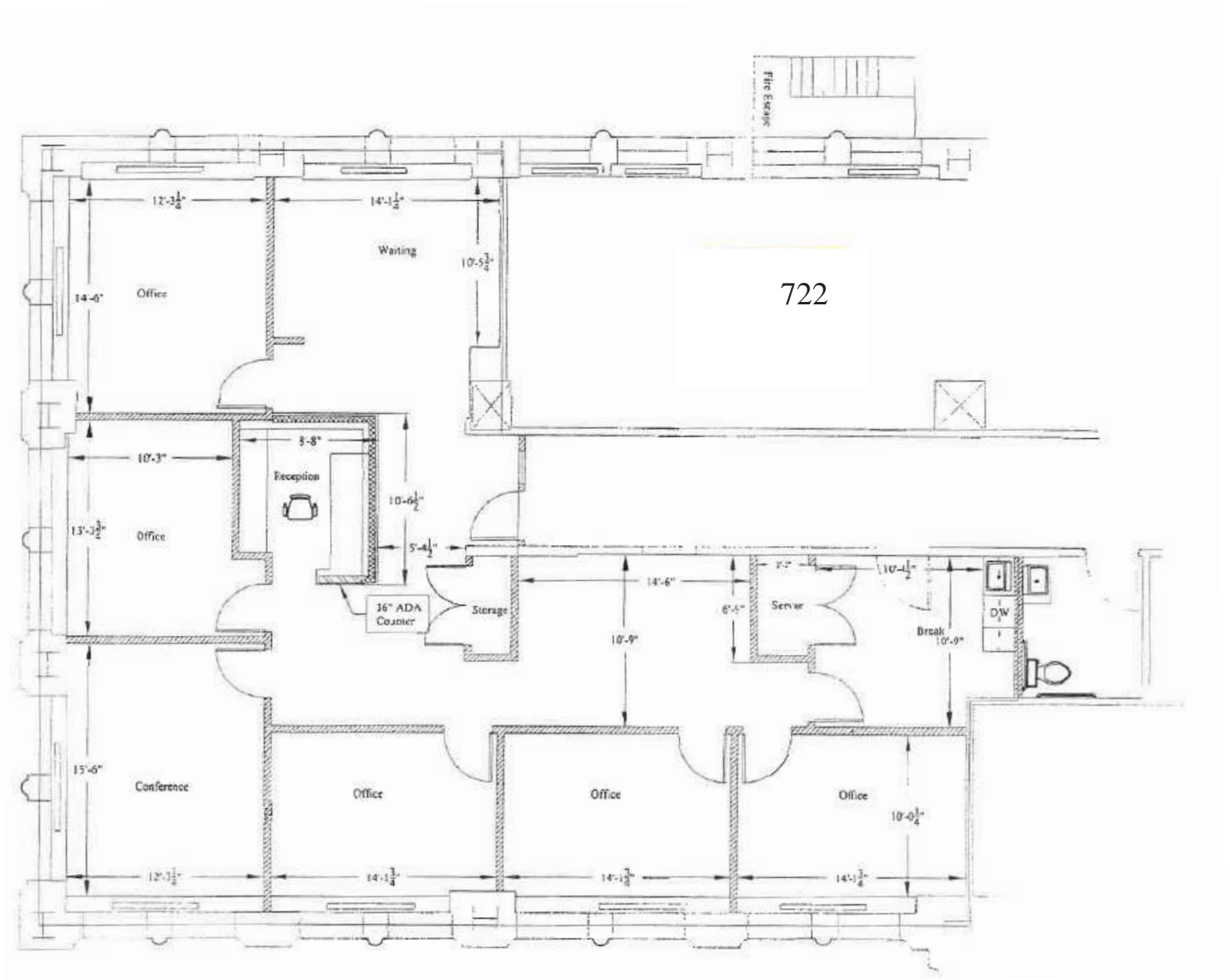
KIEMLE
HAGOOD

US BANK BUILDING

422 W Riverside Avenue | Spokane, Washington

SUITE 722

±2,397 RSF



LEASING INQUIRIES

DINA COLE

509.755.7502 dina.cole@kiemlehagood.com

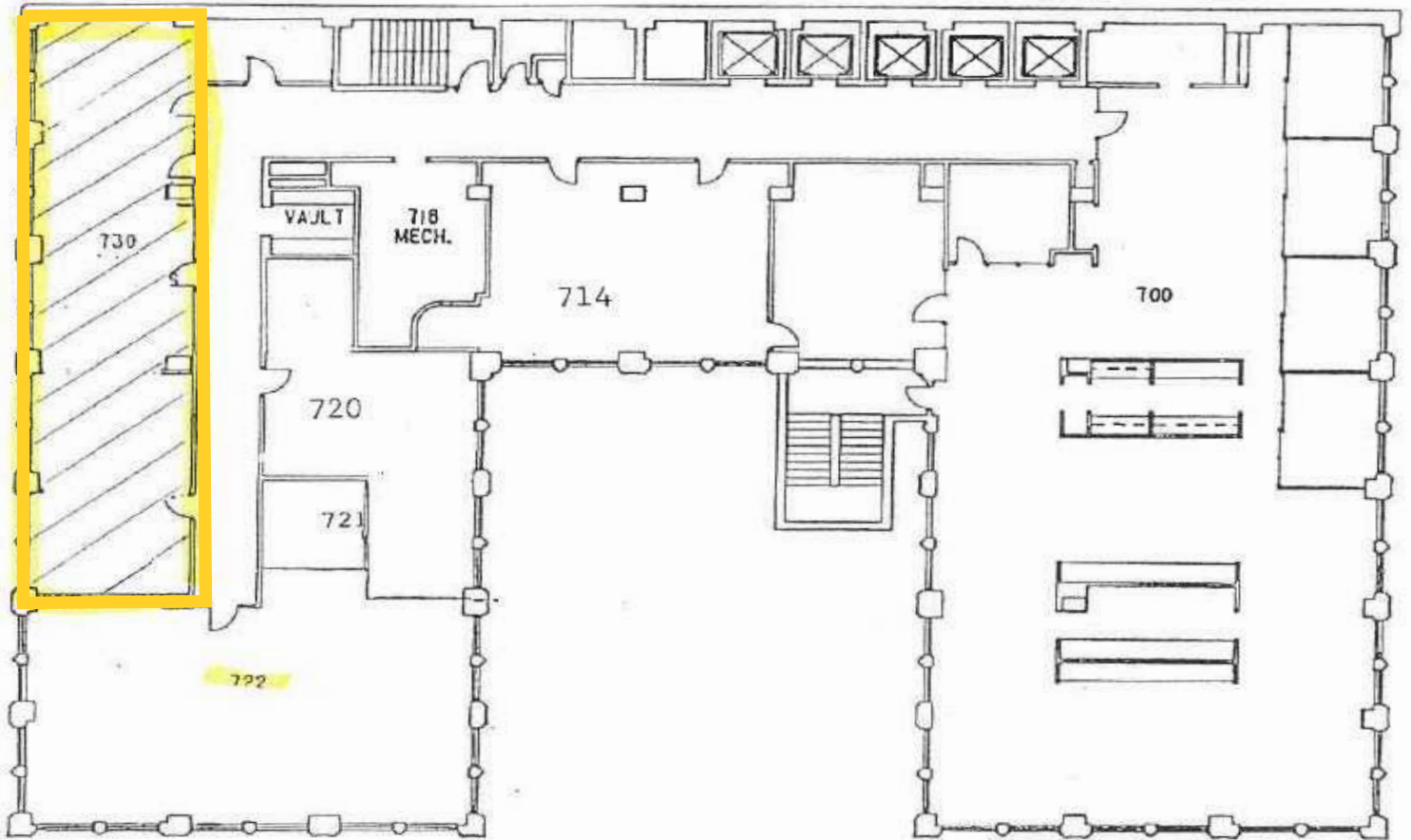
**KIEMLE
HAGOOD**

US BANK BUILDING

422 W Riverside Avenue | Spokane, Washington

SUITE 730

±1,369 RSF



LEASING INQUIRIES

DINA COLE

509.755.7502 dina.cole@kiemlehagood.com

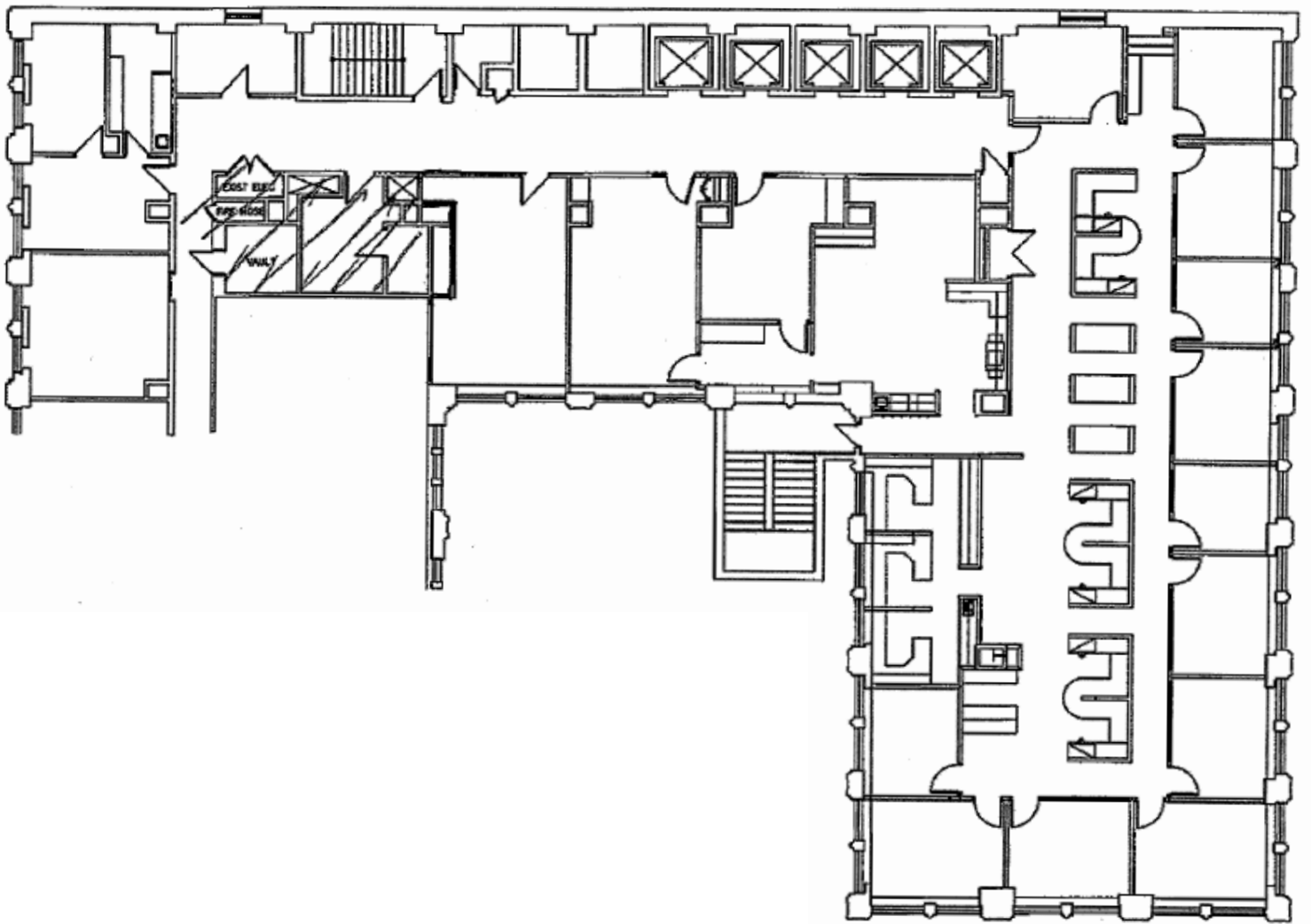
**KIEMLE
HAGOOD**

US BANK BUILDING

422 W Riverside Avenue | Spokane, Washington

SUITE 800

±5,690 RSF



LEASING INQUIRIES

DINA COLE

509.755.7502 dina.cole@kiemlehagood.com

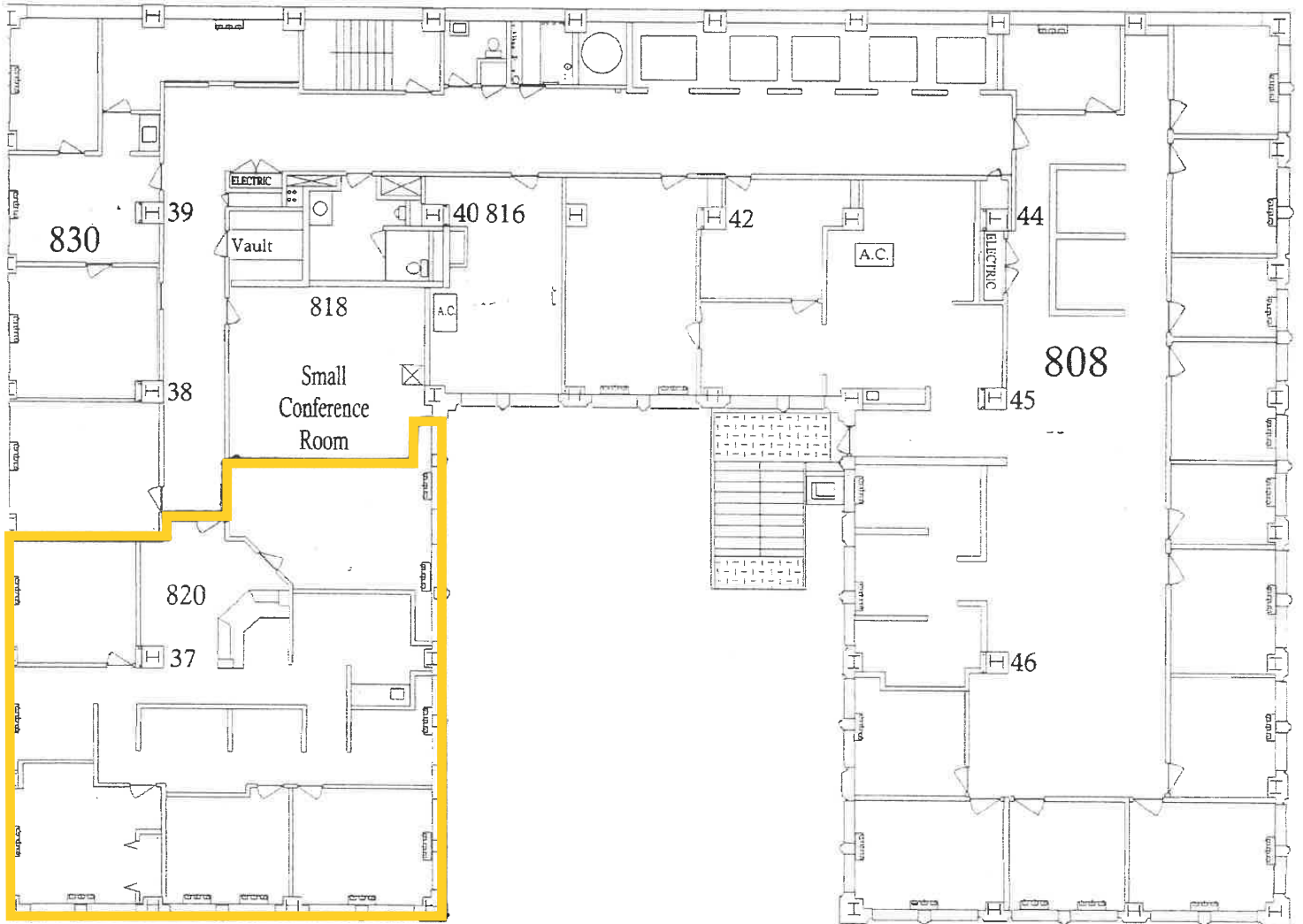
**KIEMLE
HAGOOD**

US BANK BUILDING

422 W Riverside Avenue | Spokane, Washington

SUITE 820

±2,438 RSF



LEASING INQUIRIES

DINA COLE

509.755.7502 dina.cole@kiemlehagood.com

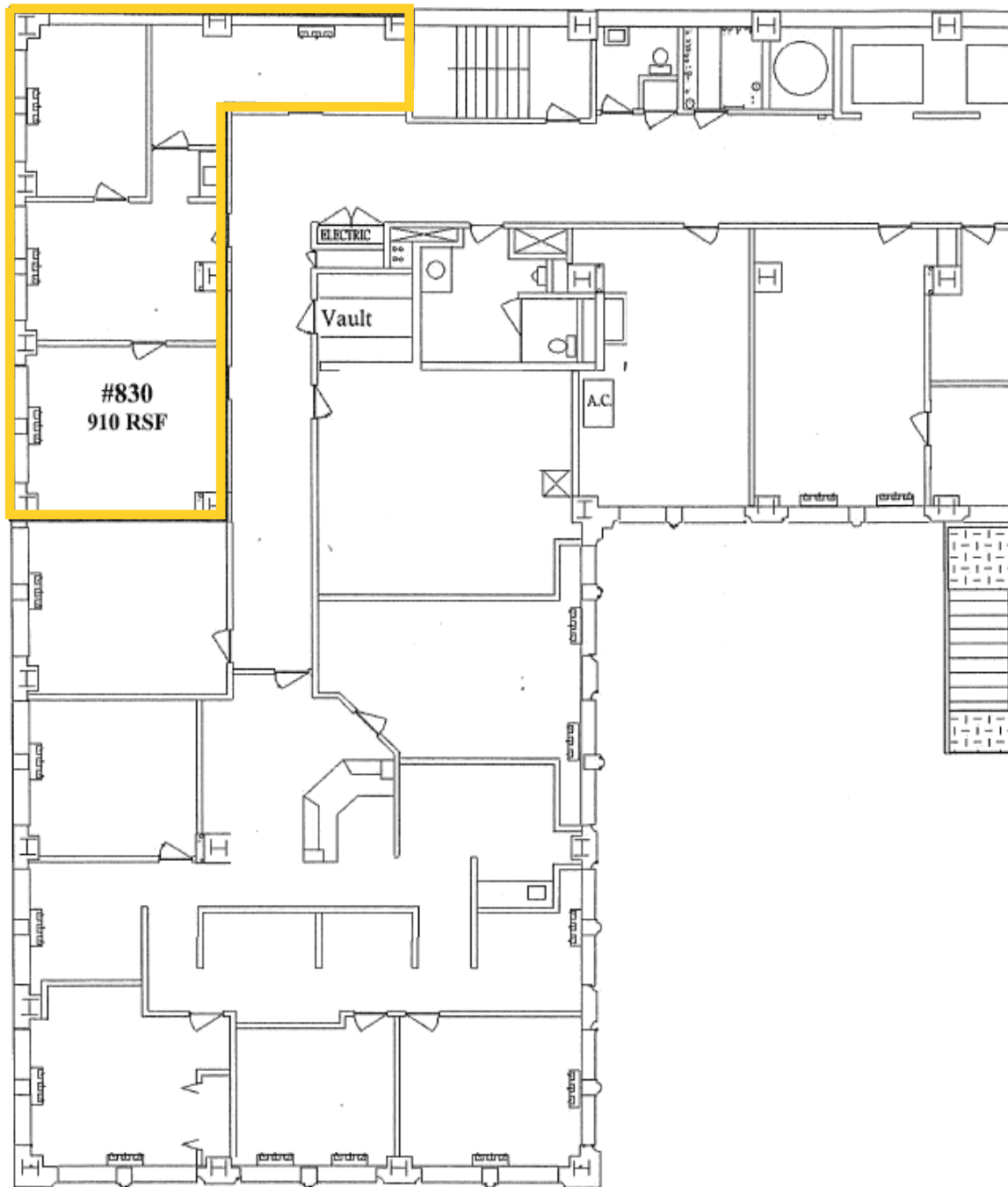
**KIEMLE
HAGOOD**

US BANK BUILDING

422 W Riverside Avenue | Spokane, Washington

SUITE 830

±910 RSF



LEASING INQUIRIES

DINA COLE
509.755.7502 dina.cole@kiemlehgagood.com

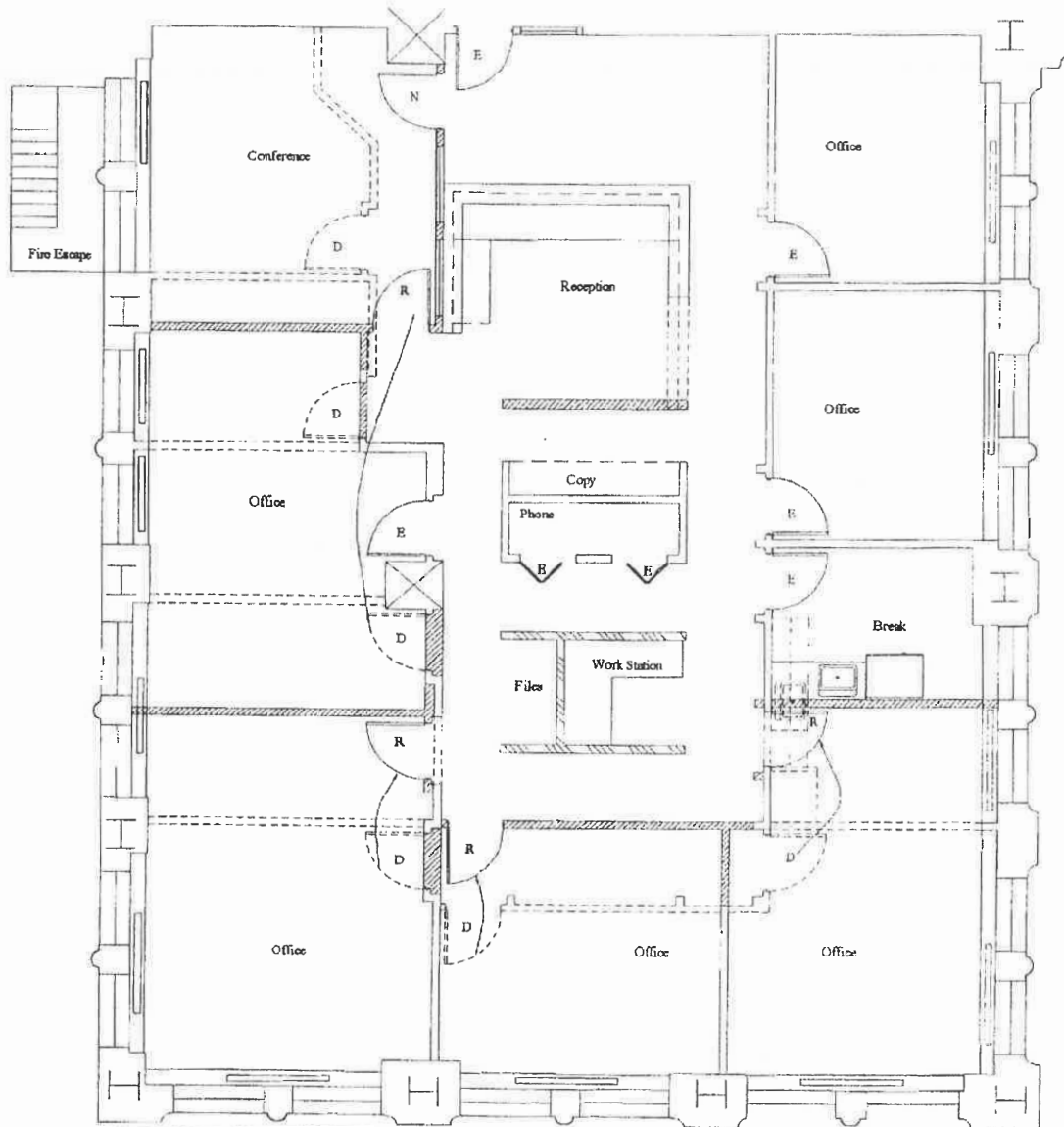


US BANK BUILDING

422 W Riverside Avenue | Spokane, Washington

SUITE 920

±3,082 RSF



LEASING INQUIRIES

DINA COLE
509.755.7502 dina.cole@kiemlehagood.com

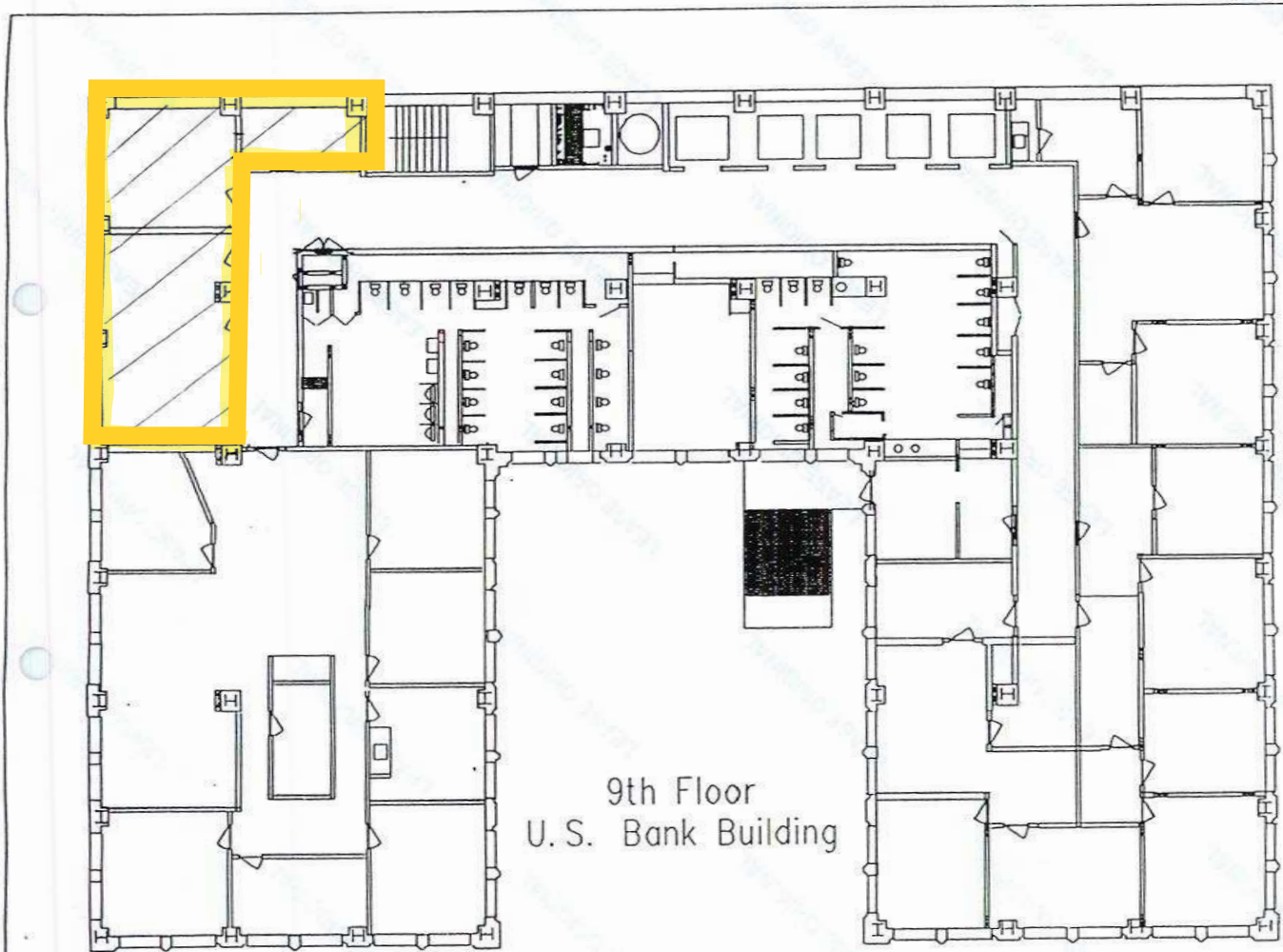


US BANK BUILDING

422 W Riverside Avenue | Spokane, Washington

SUITE 931

±763 RSF



LEASING INQUIRIES

DINA COLE

509.755.7502 dina.cole@kiemlehagood.com

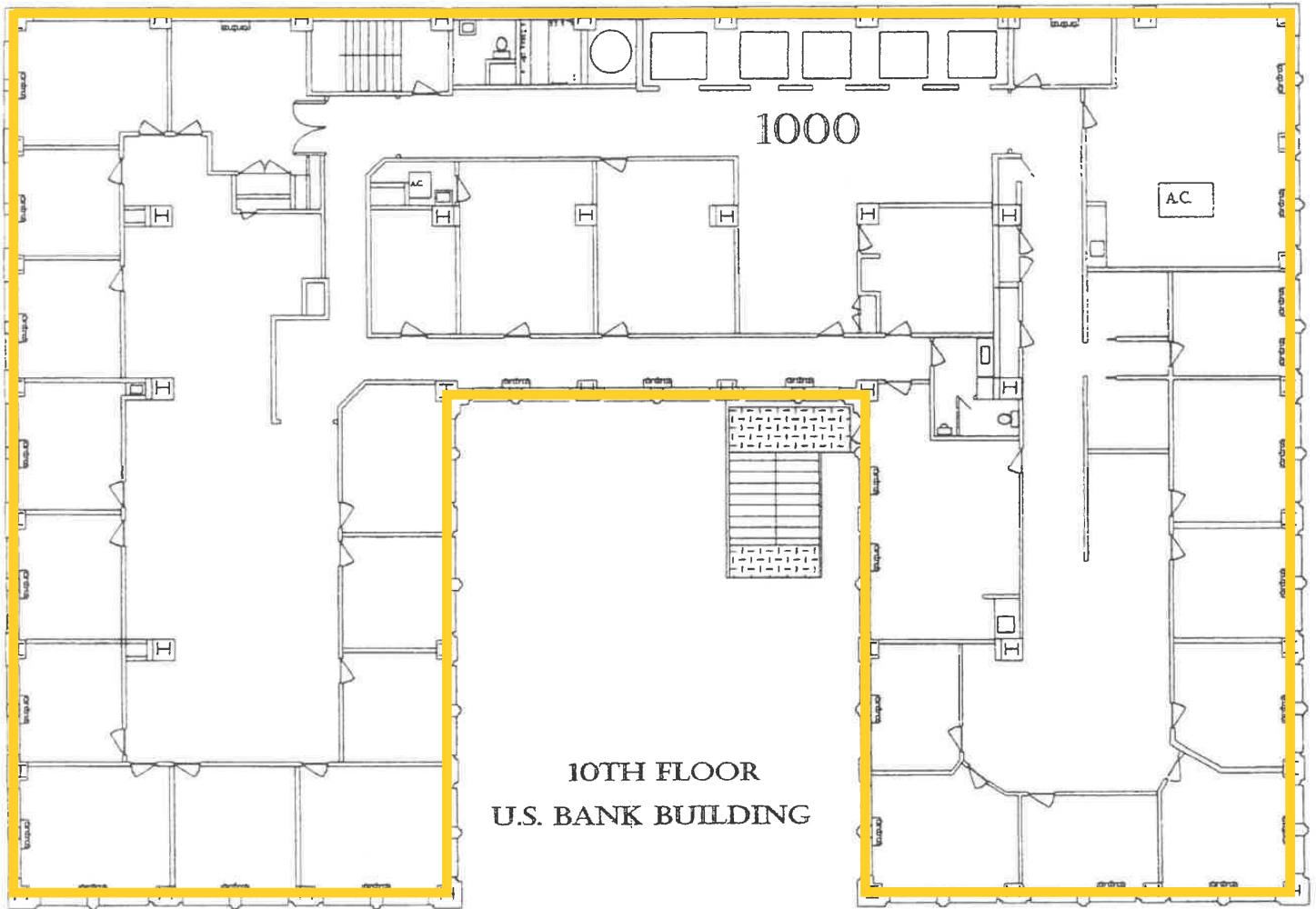
**KIEMLE
HAGOOD**

US BANK BUILDING

422 W Riverside Avenue | Spokane, Washington

SUITE 1000

±10,967 RSF



LEASING INQUIRIES

DINA COLE

509.755.7502 dina.cole@kiemlehagood.com

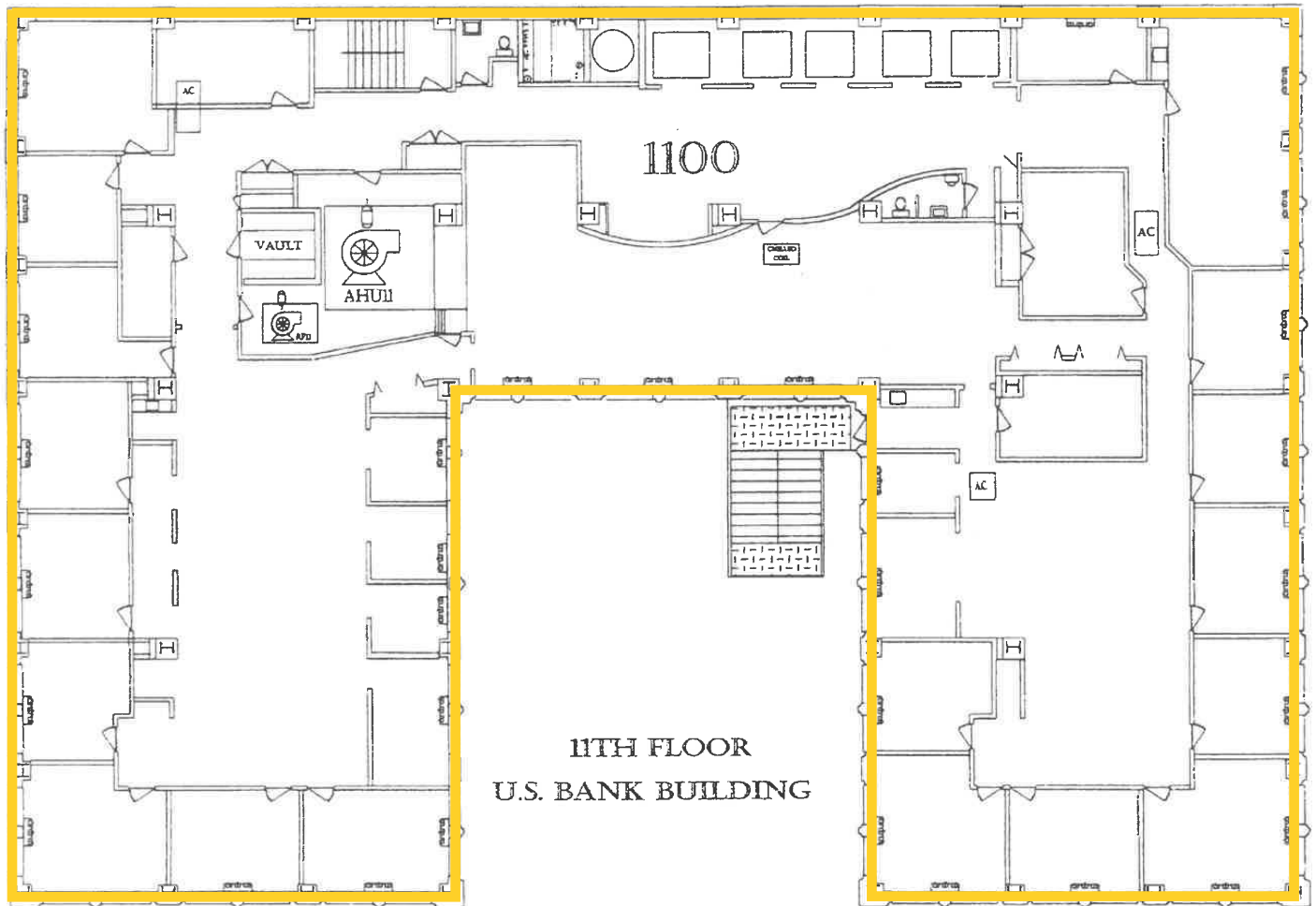
**KIEMLE
HAGOOD**

US BANK BUILDING

422 W Riverside Avenue | Spokane, Washington

SUITE 1100

±10,967 RSF



LEASING INQUIRIES

DINA COLE

509.755.7502 dina.cole@kiemlehagood.com

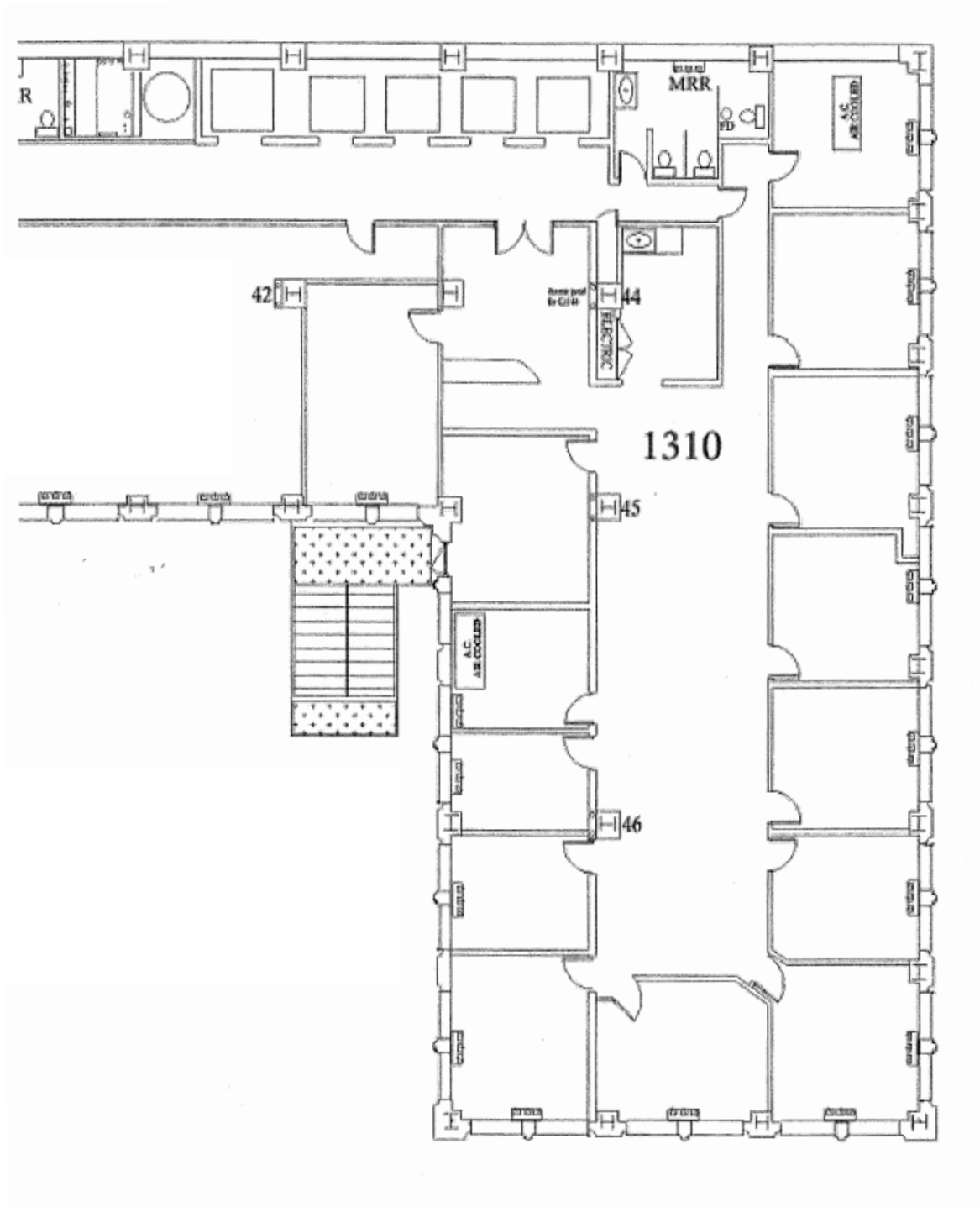
**KIEMLE
HAGOOD**

US BANK BUILDING

422 W Riverside Avenue | Spokane, Washington

SUITE 1310

±4,905 RSF



LEASING INQUIRIES

DINA COLE
509.755.7502 dina.cole@kiemlehgagood.com

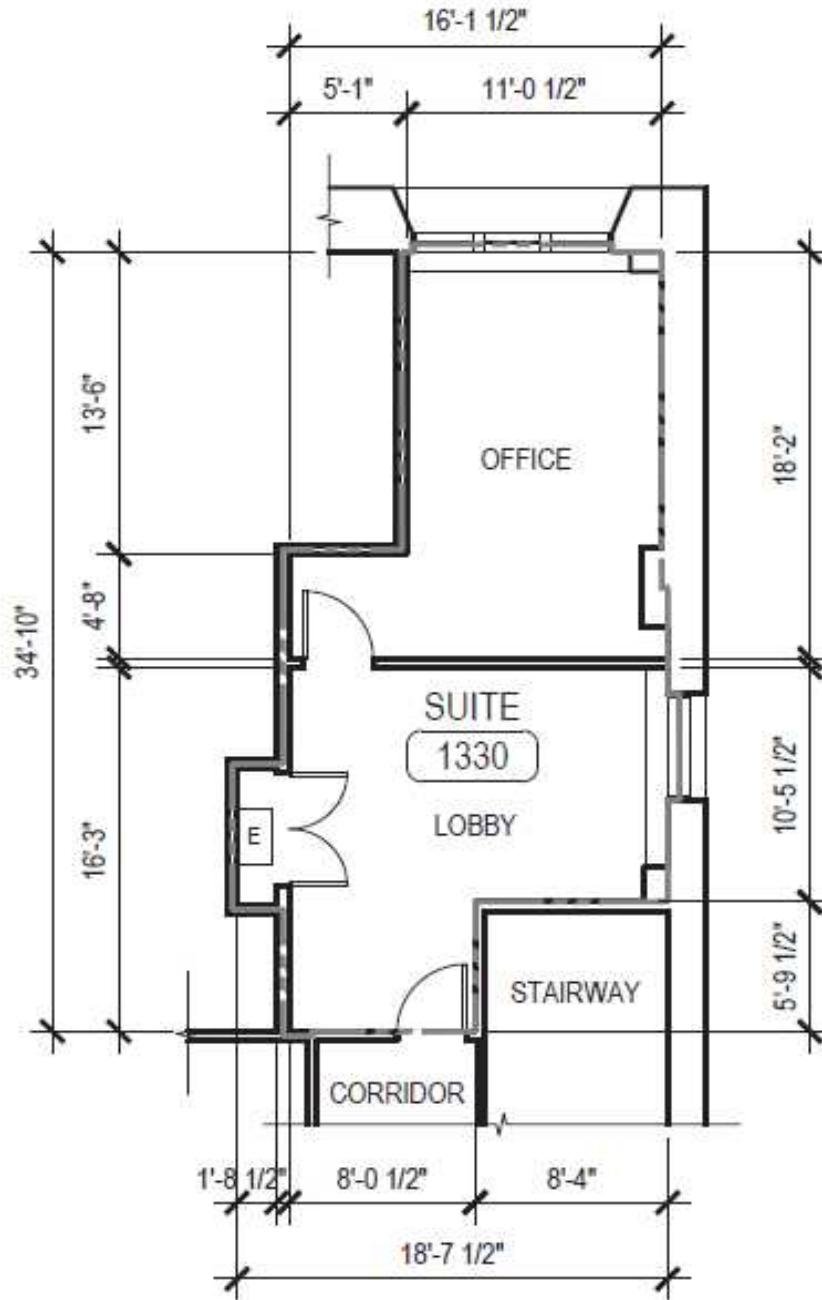


US BANK BUILDING

422 W Riverside Avenue | Spokane, Washington

SUITE 1330

±479 RSF



LEASING INQUIRIES

DINA COLE
509.755.7502 dina.cole@kiemlehagood.com

