

# SPACE FOR LEASE



## OFFICE SUITES AVAILABLE

<u>SUITE</u>	<u>LEASE RATE</u>	<u>SUITE SIZE</u>
SUITE 103	\$24.00 PSF (\$6,582/Mo)	±3,291 RSF
SUITE 203	\$22.00 PSF (\$3,901/Mo)	±2,128 RSF
SUITE 301	\$22.00 PSF (\$2,239/Mo)	±1,221 RSF
SUITE 303	\$22.00 PSF (\$7,179/Mo)	±3,916 RSF*
		*Divisible to ±730 RSF
SUITE 310	\$23.00 PSF (\$1,267/Mo)	±661 RSF

## HIGHLIGHTS

- Close to: restaurants, services, banking, and entertainment
- 10 minutes to Downtown Spokane
- North-south access along Division and Maple
- East-west access at Francis
- Excellent visibility
- Pylon signage available
- Free, on-site parking

## NORTH SPOKANE FINANCIAL CENTER

7307 N Division Street  
Spokane, WA 99208

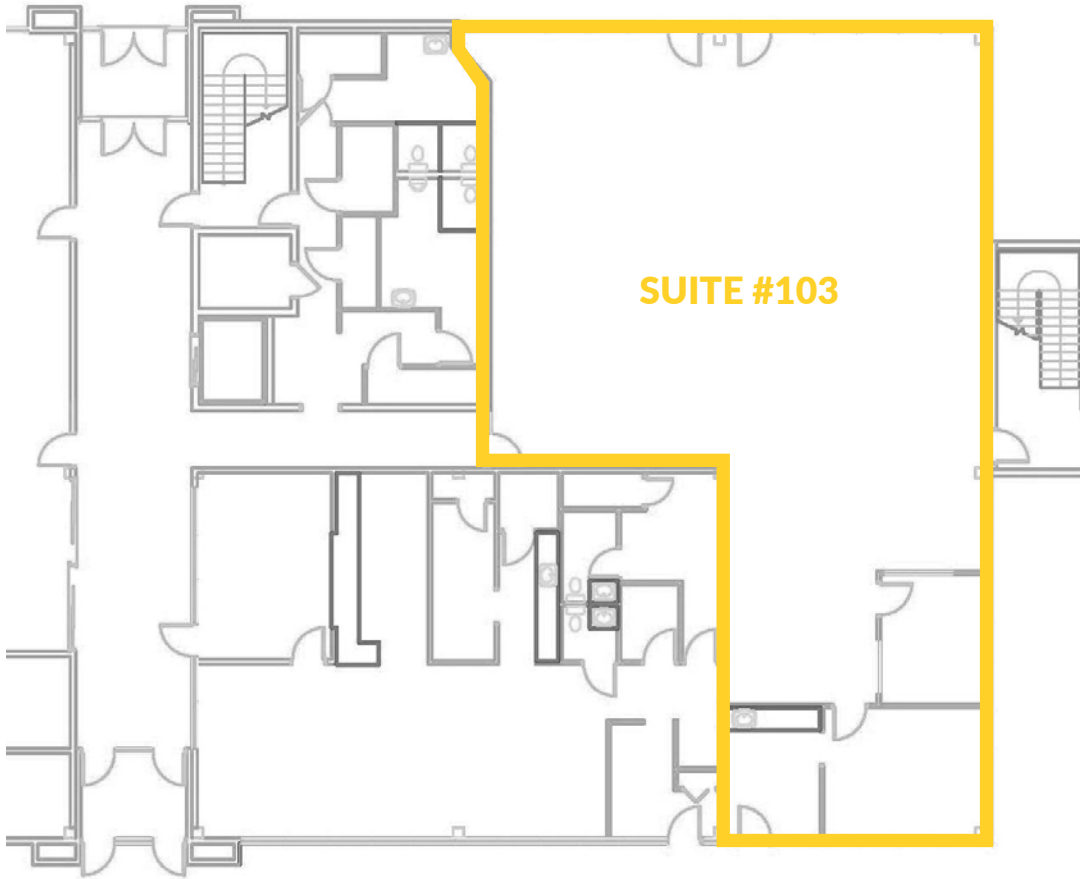
[View  
Location](#)



**CRAIG SOEHRN, BROKER**  
509.755.7548  
craigs@kiemlehagood.com

**KIM FLOYD, PROPERTY MANAGER**  
509.755.7522  
kimf@kiemlehagood.com

**KIEMLE  
HAGOOD**



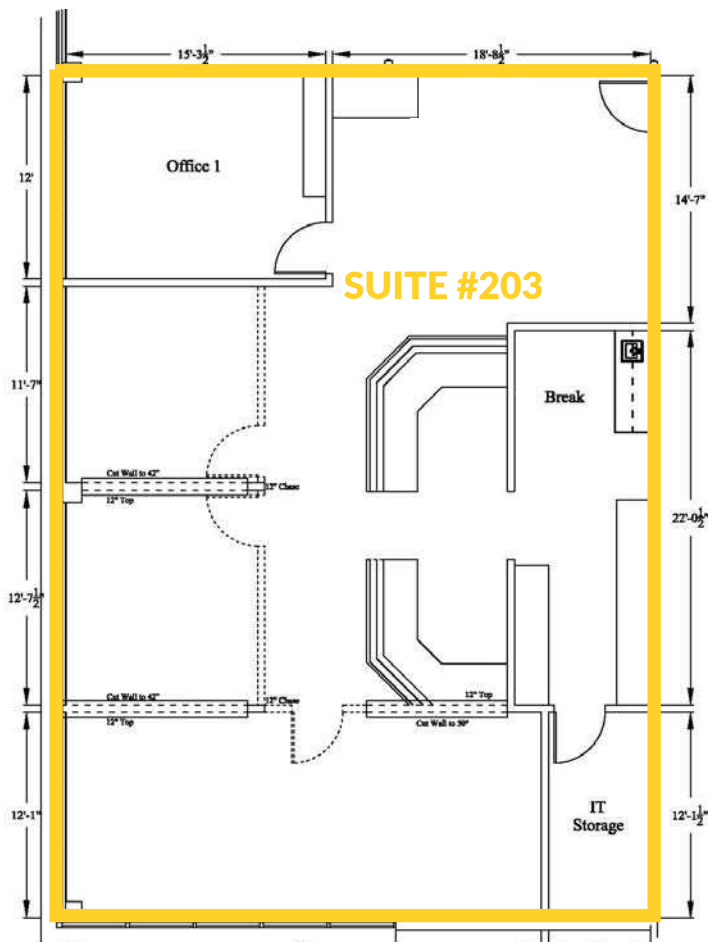
### SUITE #103

Price: \$24.00 PSF

(\$6,582/Mo)

Space Size: ±3,291 SF

Full Service Lease



### SUITE #203

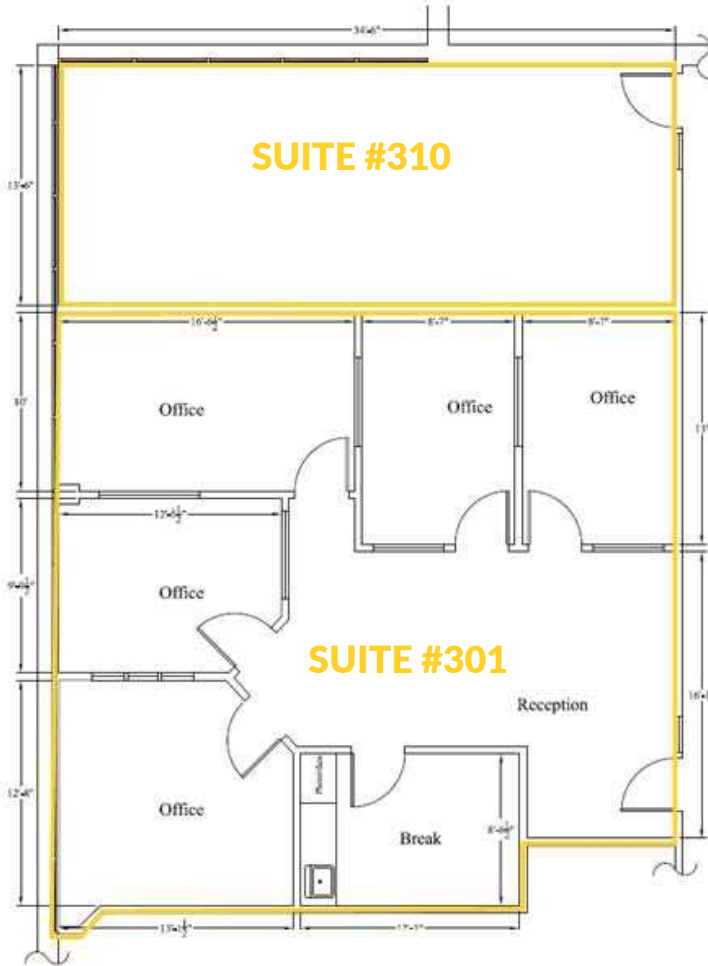
### SUITE #203

Price: \$22.00 PSF

(\$3,901/Mo)

Space Size: ±2,128 SF

Full Service Lease



### **SUITE #310**

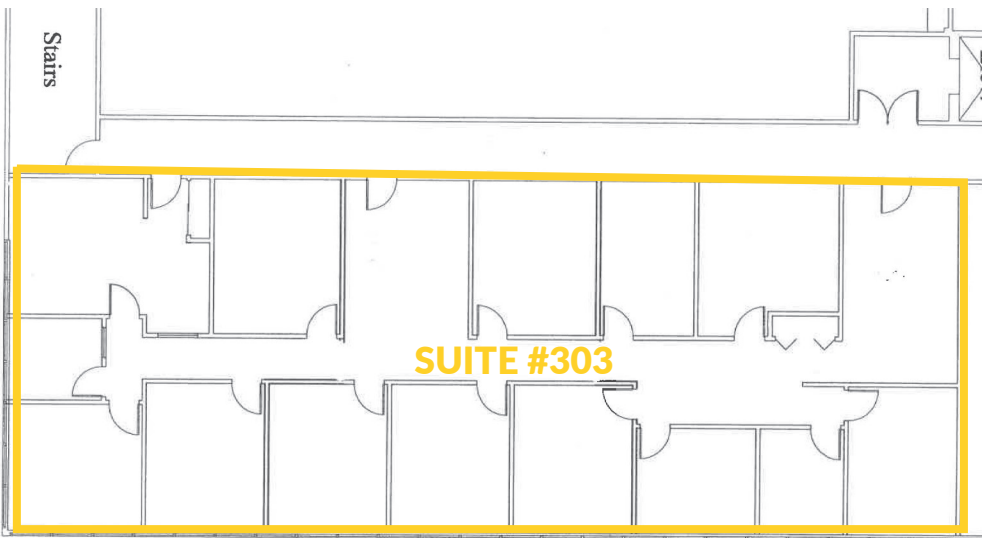
Price: \$23.00 PSF  
(\$1,267/Mo)

Space Size: ±661 RSF  
Full Service Lease  
AVAILABLE 6.1.2024

### **SUITE #301**

Price: \$22.00 PSF  
(\$2,239/Mo)

Space Size: ±1,221 RSF  
Full Service Lease  
AVAILABLE 6.1.2024

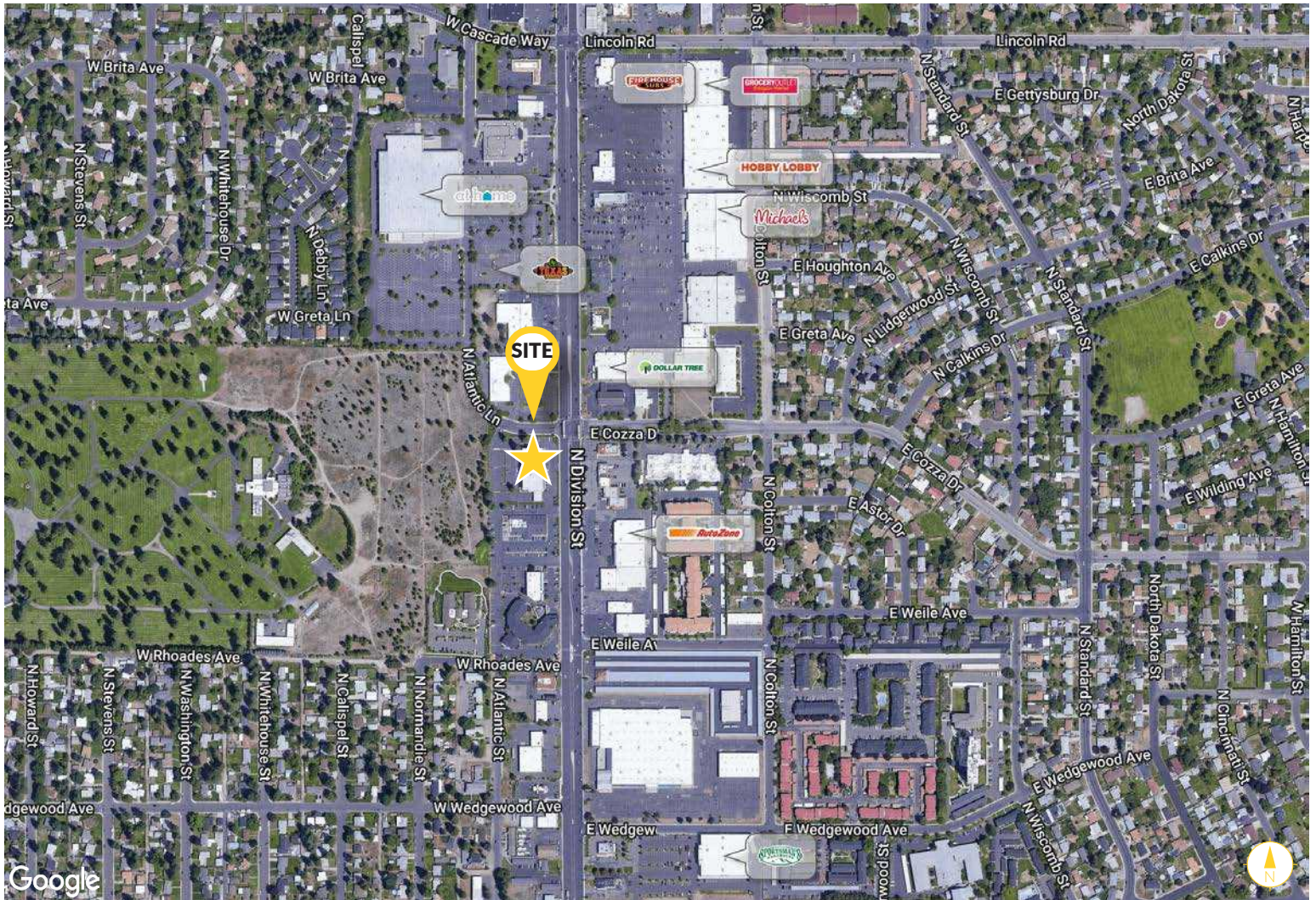


### **SUITE #303**

Price: \$22.00 PSF  
(\$7,179/Mo)

Space Size: ±3,916 RSF  
\*Divisible to 730 RSF  
Full Service Lease  
AVAILABLE 6.1.2024





# NORTH SPOKANE FINANCIAL CENTER

7307 N Division Street  
Spokane, WA 99208

**CRAIG SOEHREN, BROKER**  
509.755.7548 craigs@kiemlehgood.com

**KIM FLOYD, PROPERTY MANAGER**  
509.755.7522 kimf@kiemlehgood.com

601 WEST MAIN AVENUE, SUITE 400  
SPOKANE, WA 99201



**OFFICE LOCATIONS**  
SPOKANE | COEUR D'ALENE | TRI-CITIES | PALOUSE | MISSOULA

No warranty or representation, expressed or implied, is made by Kiemle Hagood, its agents or its employees as to the accuracy of the information contained herein. All information furnished is from sources deemed reliable and submitted subject to errors, omissions, change of terms and conditions, prior sale, lease or financing, or withdrawal without notice. No one should rely solely on the above information, but instead should conduct their own investigation to independently satisfy themselves.

Kiemle Hagood respects the intellectual property of others:  
If you believe the copyright in your work has been violated through this Website, please contact our office for notice of claims of copyright infringement. For your complaint to be valid under the Digital Millennium Copyright Act of 1998 (DMCA), you must provide the following information when providing notice of the claimed copyright infringement: Identify the material on the Website that you believe infringes your work, with enough detail so that we may locate it on the Website; provide your address, telephone number and email address; provide a statement that you have a good faith belief that the disputed use is not authorized by the copyright owner, its agent, or the law; provide a statement that the information in the notification is accurate, and under penalty of perjury, that the complaining party is authorized to act on behalf of the owner of an exclusive right that is allegedly infringed; and provide your physical or electronic signature. Upon receiving your complaint, Kiemle Hagood will, upon review, remove content that you believe infringes your copyright if the complaint is found to be valid.

