

**FOR LEASE**



# 24860 Pacific Hwy S, Suite 103

Kent, WA 98032

*Prime office / retail space located on Pacific Highway S in Kent.*

## PROPERTY HIGHLIGHTS

- + Newer building on Pacific Hwy S (SR 99)
- + Open floor plan with private bathroom
- + Reader board / pole signage
- + Ample on-site parking
- + Estimated 2024 NN: \$4.84/SF

### BRUCE GOLDSTEIN

Senior Vice President  
+1 425 586 5632  
bgoldstein@nai-psp.com



THE INFORMATION CONTAINED HEREIN HAS BEEN GIVEN TO US BY THE OWNER OF THE PROPERTY OR OTHER SOURCES WE DEEM RELIABLE. WE HAVE NO REASON TO DOUBT ITS ACCURACY, BUT WE DO NOT GUARANTEE IT. ALL INFORMATION SHOULD BE VERIFIED PRIOR TO PURCHASE OR LEASE.

TOTAL SF

**1,094 SF**

PRICE/SF

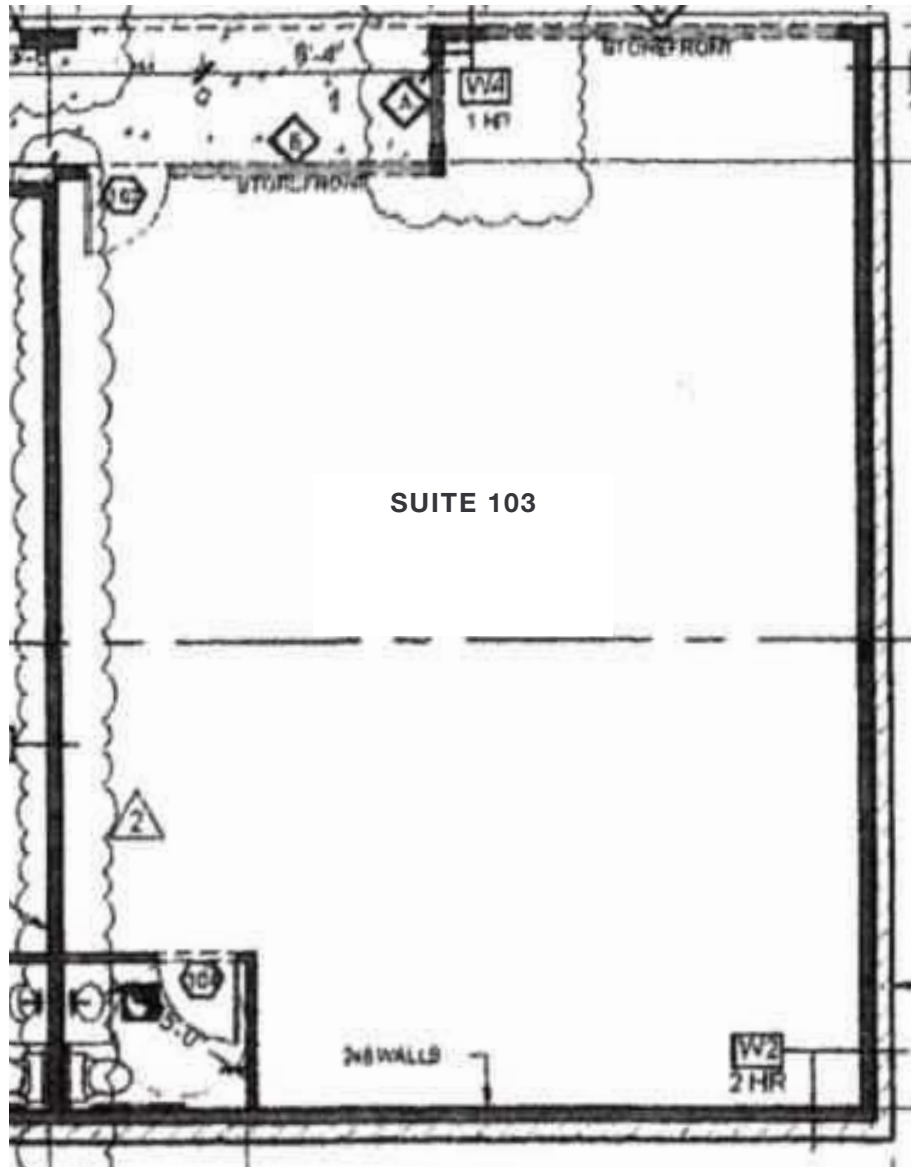
**\$21.00**

TYPE

**NNN**

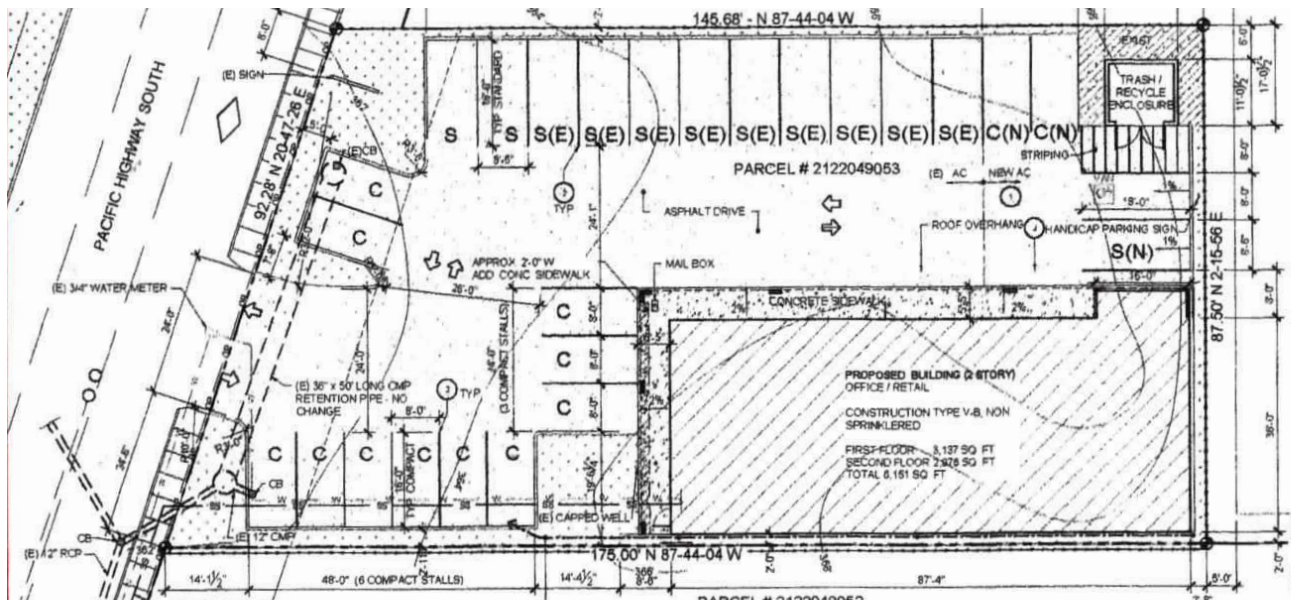
[nai-psp.com](http://nai-psp.com)

# Floor Plan





# Site Plan



**BRUCE GOLDSTEIN**  
Senior Vice President  
+1 425 586 5632  
bgoldstein@nai-psp.com

