

# Pine & Boylston

610 E. Pine Street | Seattle, WA 98122

NEWMARK

ASANA  
PARTNERS

# Property Highlights

- Iconic Capitol Hill location at the corner of Pine & Boylston, steps away from the hottest bars and restaurants in the city
- Historic building with easy access to downtown Seattle and numerous nearby parking and transportation options
- Only five blocks from the Capitol Hill Link light rail station
- Open ceiling creative spaces with high-end finishes
- 30+ restaurants, bars and amenities within three blocks
- Close proximity to Broadway, and I-5 North & South access



99

Walk Score



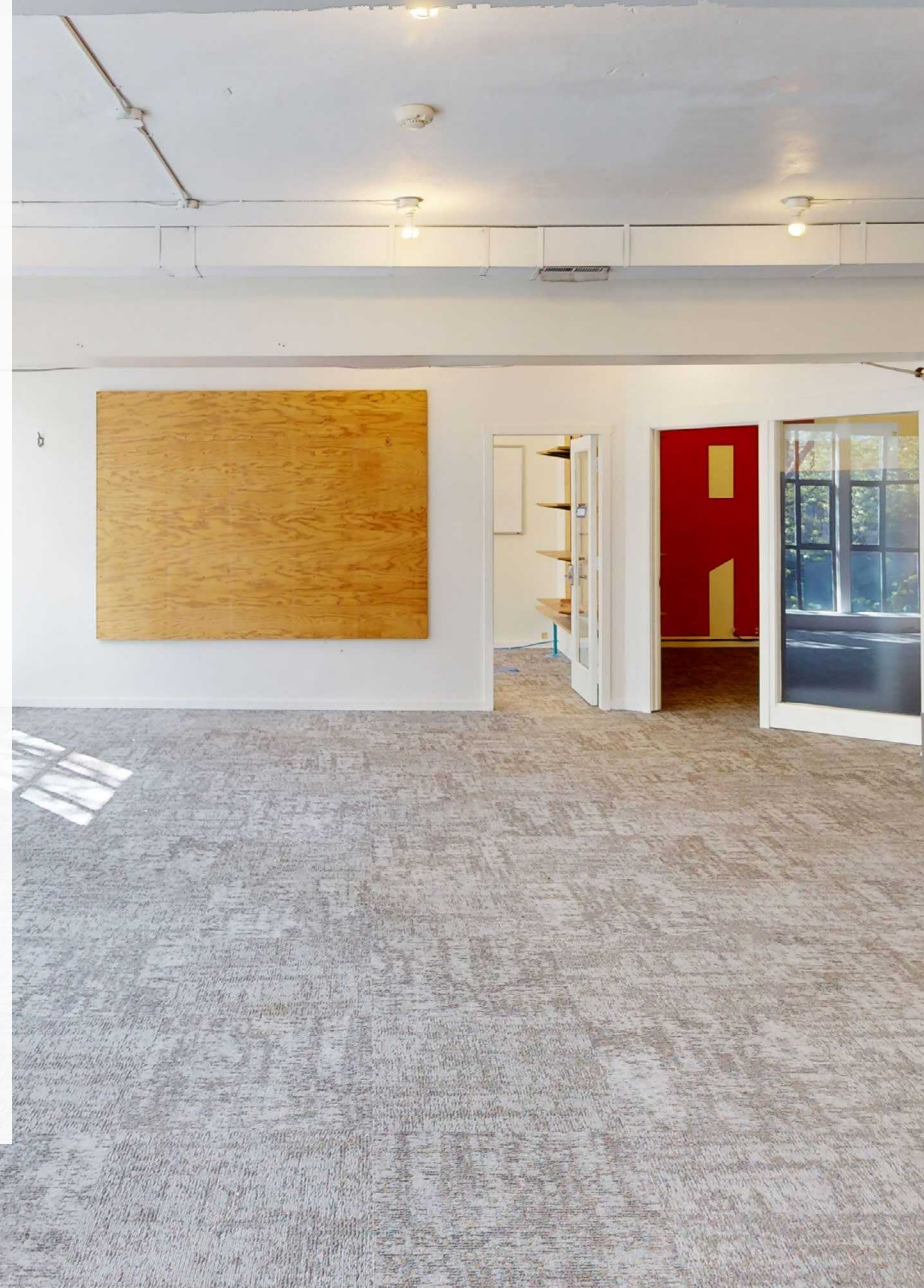
99

Transit Score



82

Bike Score



# Location



# Availabilities

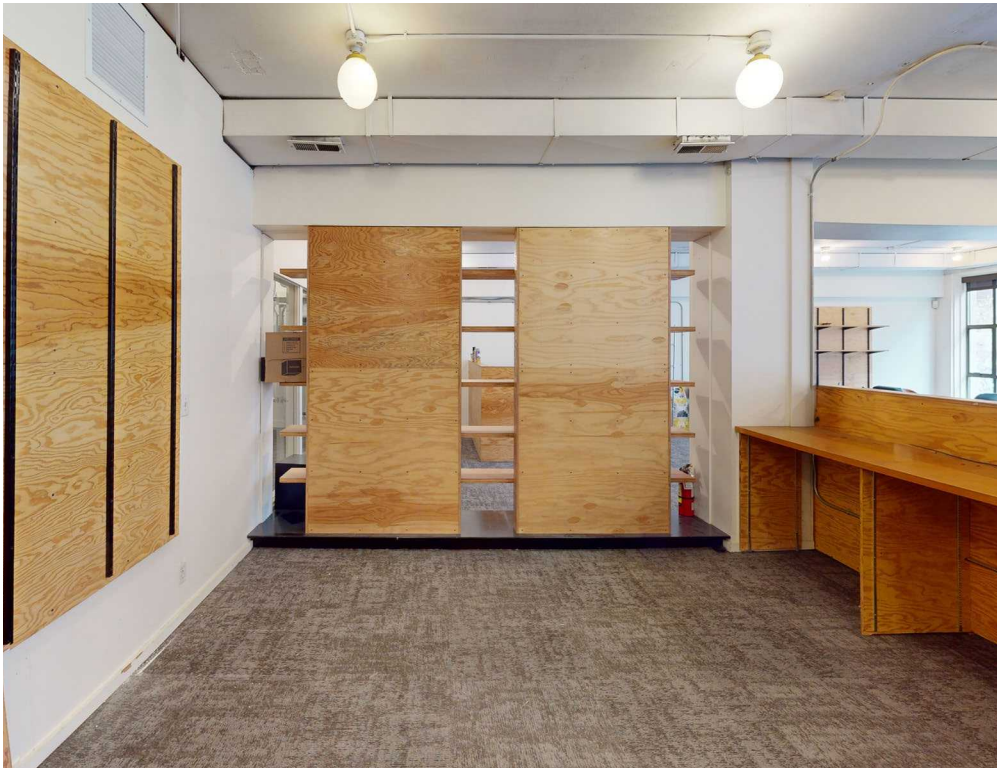
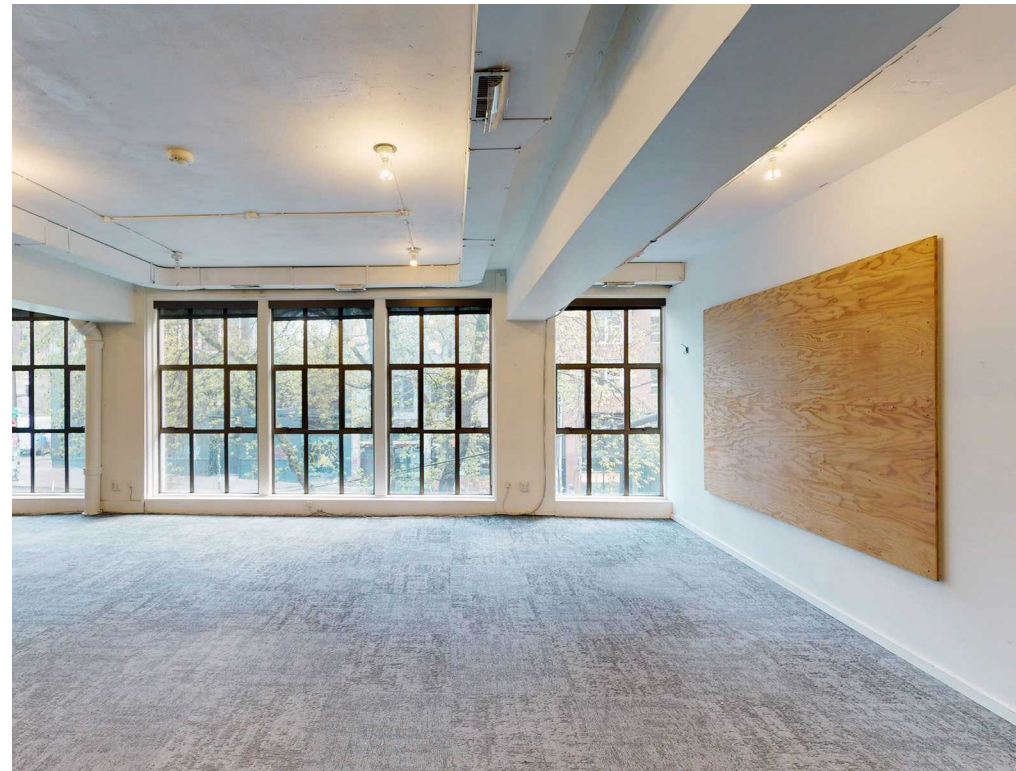
---

Suite 202

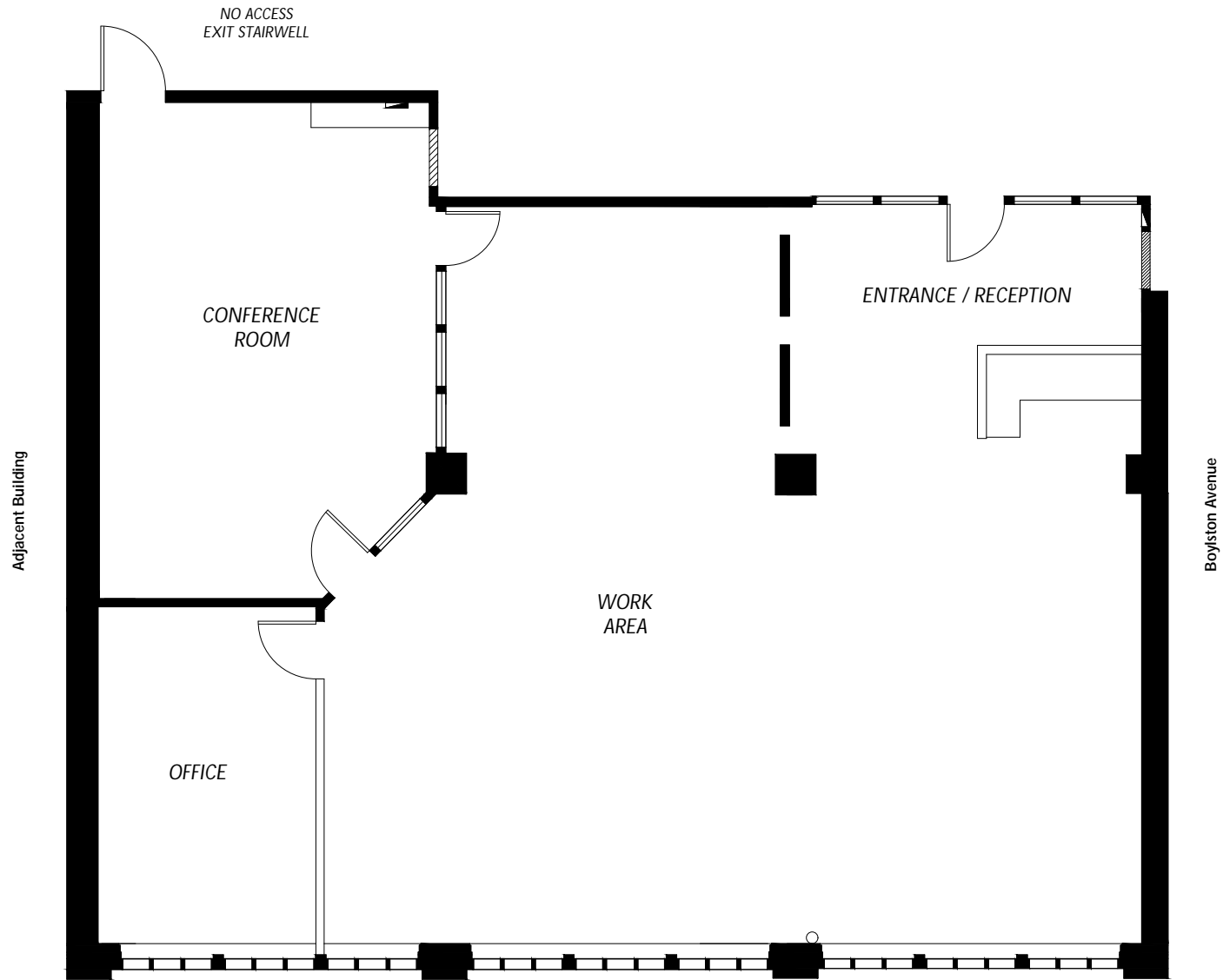


+/-1,989 RSF

- Available Now
  - Large windows provide ample natural light
  - Open build-out with large meeting areas
- 



# Suite 202 - +/-1,989 RSF



# Pine & Boylston

610 E. Pine Street | Seattle, WA 98122

Contact us for more details:

Cavan O'Keefe  
Senior Managing Director  
206.395.2903  
cavan.okeefe@nmrk.com

Daniel Seger  
Senior Managing Director  
206.487.5163  
daniel.seger@nmrk.com

Anne Marie Koehler  
Senior Managing Director  
206.487.5167  
annemarie.koehler@nmrk.com

Erika Koehler  
Senior Managing Director  
206.487.5168  
erika.koehler@nmrk.com

**NEWMARK**

**A S A N A**  
PARTNERS