

# 1417 4TH AVE

*Full building available.  
Beautifully designed  
office for the modern  
user located at the heart  
of downtown Seattle's  
financial district and  
retail core.*

SEATTLE, WA

DAVID GURRY  
206.931.6474  
david.gurry@kidder.com

DAN DAHL  
206.650.6154  
dan.dahl@kidder.com

KIDDER.COM



km Kidder  
Mathews

1417 4TH AVE

# THE REDEFINED OFFICE EXPERIENCE

*With a convenient downtown location, 1417 4th Ave is an excellent option for employers looking to be at the heart of it all.*

AVAILABLE FOR LEASE

## PROPERTY HIGHLIGHTS

New ownership and building upgrades

Rent ready space, full floor suites with private elevator access

Furnished spaces available

Located in the heart of the CBD retail district, steps away from all the best transportation options and retail amenities

Newly renovated lobby with unique opportunity to brand your own full floor

Fantastic water views from the upper floors

Numerous nearby parking facilities

Bike storage in building basement

100

TRANSIT SCORE

100








BIKE SCORE

99

WALK SCORE

KIDDER MATHEWS

SUITE AVAILABILITY

	FLOOR 2	6,692 SF	<a href="#">View floor plan</a>
	FLOOR 3	6,712 SF	<a href="#">View floor plan</a>
	FLOOR 4	6,809 SF	<a href="#">View floor plan</a>
	SUITE 500	4,534 SF	<a href="#">View floor plan</a>
	SUITE 501	2,719 SF	<a href="#">View floor plan</a>
	FLOOR 6	6,745 SF	<a href="#">View floor plan</a>
	FLOOR 7	6,760 SF	<a href="#">View floor plan</a>
	FLOOR 8	6,780 SF	<a href="#">View floor plan</a>

*\$19 - \$22 PSF*

LEASE RATES



1417 4TH AVE

PIKE PLACE MARKET

MOORE THEATER

OLYMPIC SCULPTURE PARK

SEATTLE CENTER


WESTLAKE CENTER

1417 4TH AVE

NORDSTROM


PACIFIC PLACE

AVAILABLE FOR LEASE

KIDDER MATHEWS

1417 4TH AVE

*Exclusively leased by*

DAVID GURRY  
206.931.6474  
david.gurry@kidder.com

DAN DAHL  
206.650.6154  
dan.dahl@kidder.com

KIDDER.COM

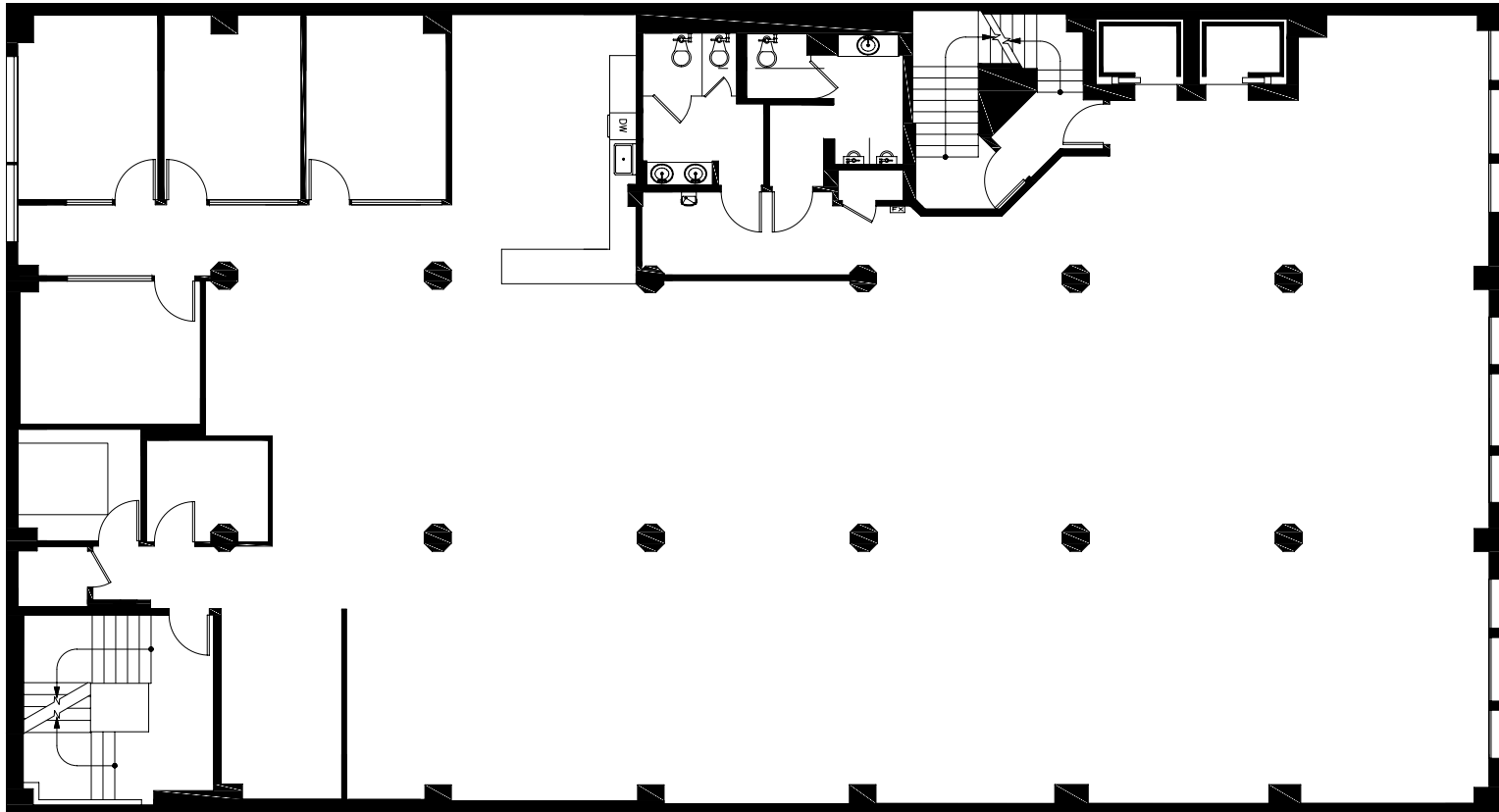
This information supplied herein is from sources we deem reliable. It is provided without any representation, warranty, or guarantee, expressed or implied as to its accuracy. Prospective Buyer or Tenant should conduct an independent investigation and verification of all matters deemed to be material, including, but not limited to, statements of income and expenses. Consult your attorney, accountant, or other professional advisor.

 **Kidder  
Mathews**

1417 4TH AVE

# FLOOR 2

6,692 SF



DAVID GURRY  
206.931.6474  
david.gurry@kidder.com

DAN DAHL  
206.650.6154  
dan.dahl@kidder.com

[KIDDER.COM](http://KIDDER.COM)

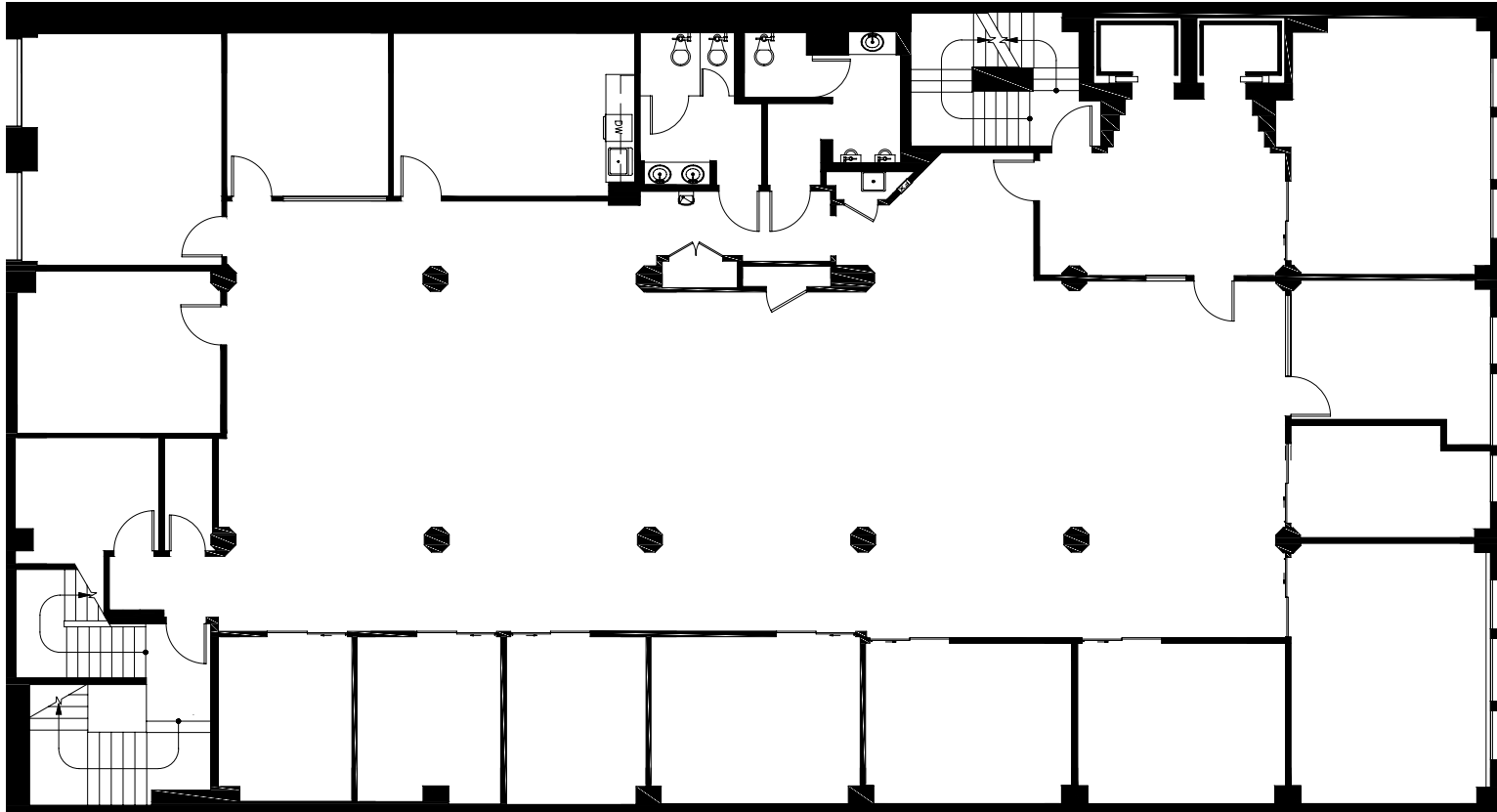
This information supplied herein is from sources we deem reliable. It is provided without any representation, warranty, or guarantee, expressed or implied as to its accuracy. Prospective Buyer or Tenant should conduct an independent investigation and verification of all matters deemed to be material, including, but not limited to, statements of income and expenses. Consult your attorney, accountant, or other professional advisor.



1417 4TH AVE

# FLOOR 3

6,712 SF



DAVID GURRY  
206.931.6474  
david.gurry@kidder.com

DAN DAHL  
206.650.6154  
dan.dahl@kidder.com

[KIDDER.COM](http://KIDDER.COM)

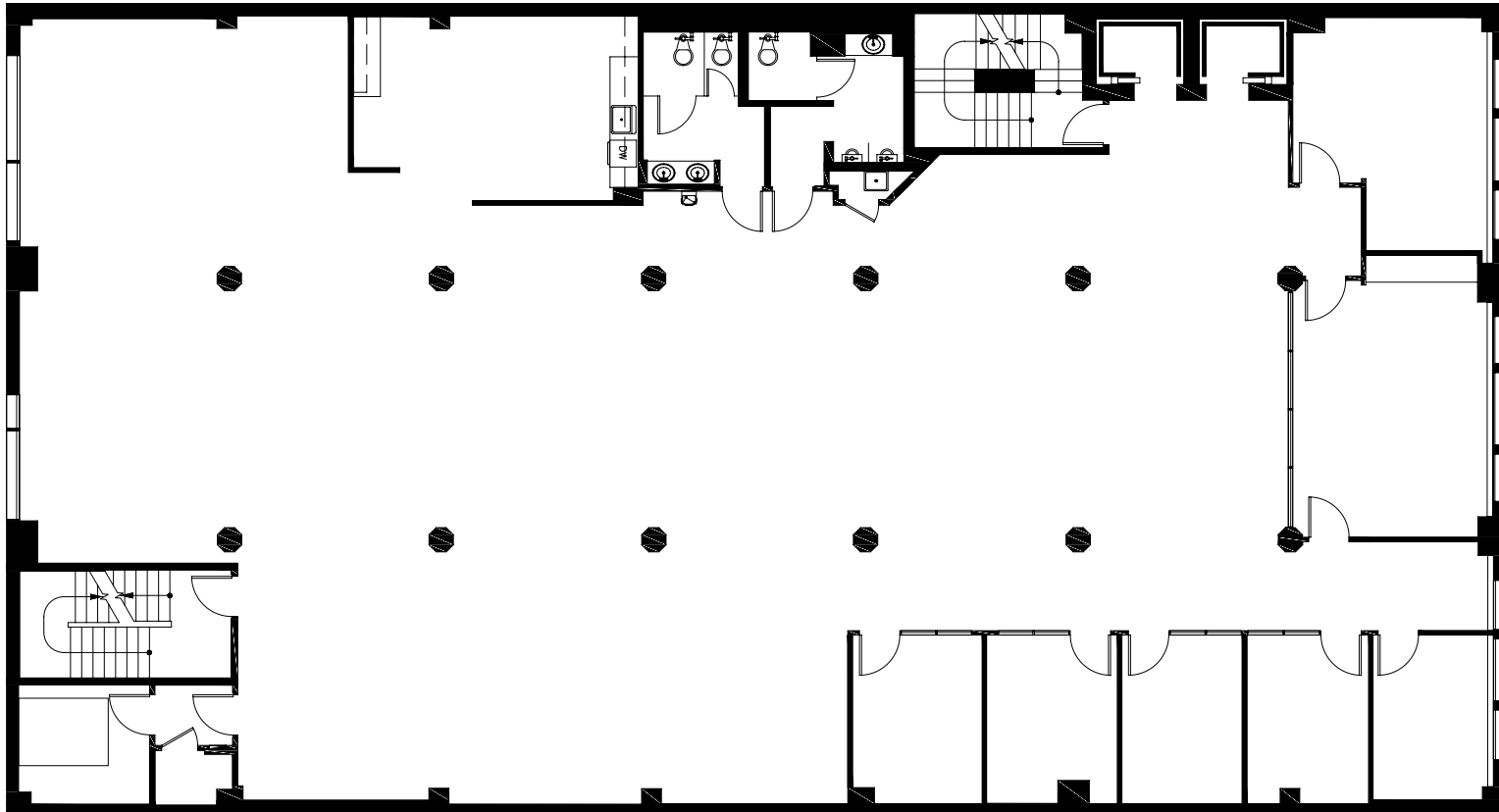
This information supplied herein is from sources we deem reliable. It is provided without any representation, warranty, or guarantee, expressed or implied as to its accuracy. Prospective Buyer or Tenant should conduct an independent investigation and verification of all matters deemed to be material, including, but not limited to, statements of income and expenses. Consult your attorney, accountant, or other professional advisor.



1417 4TH AVE

# FLOOR 4

6,809 SF



DAVID GURRY  
206.931.6474  
david.gurry@kidder.com

DAN DAHL  
206.650.6154  
dan.dahl@kidder.com

[KIDDER.COM](http://KIDDER.COM)

This information supplied herein is from sources we deem reliable. It is provided without any representation, warranty, or guarantee, expressed or implied as to its accuracy. Prospective Buyer or Tenant should conduct an independent investigation and verification of all matters deemed to be material, including, but not limited to, statements of income and expenses. Consult your attorney, accountant, or other professional advisor.





# FLOOR 5

SUITE 500 - 4,534 SF, SUITE 501 - 2,719 SF



DAVID GURRY  
206.931.6474  
david.gurry@kidder.com

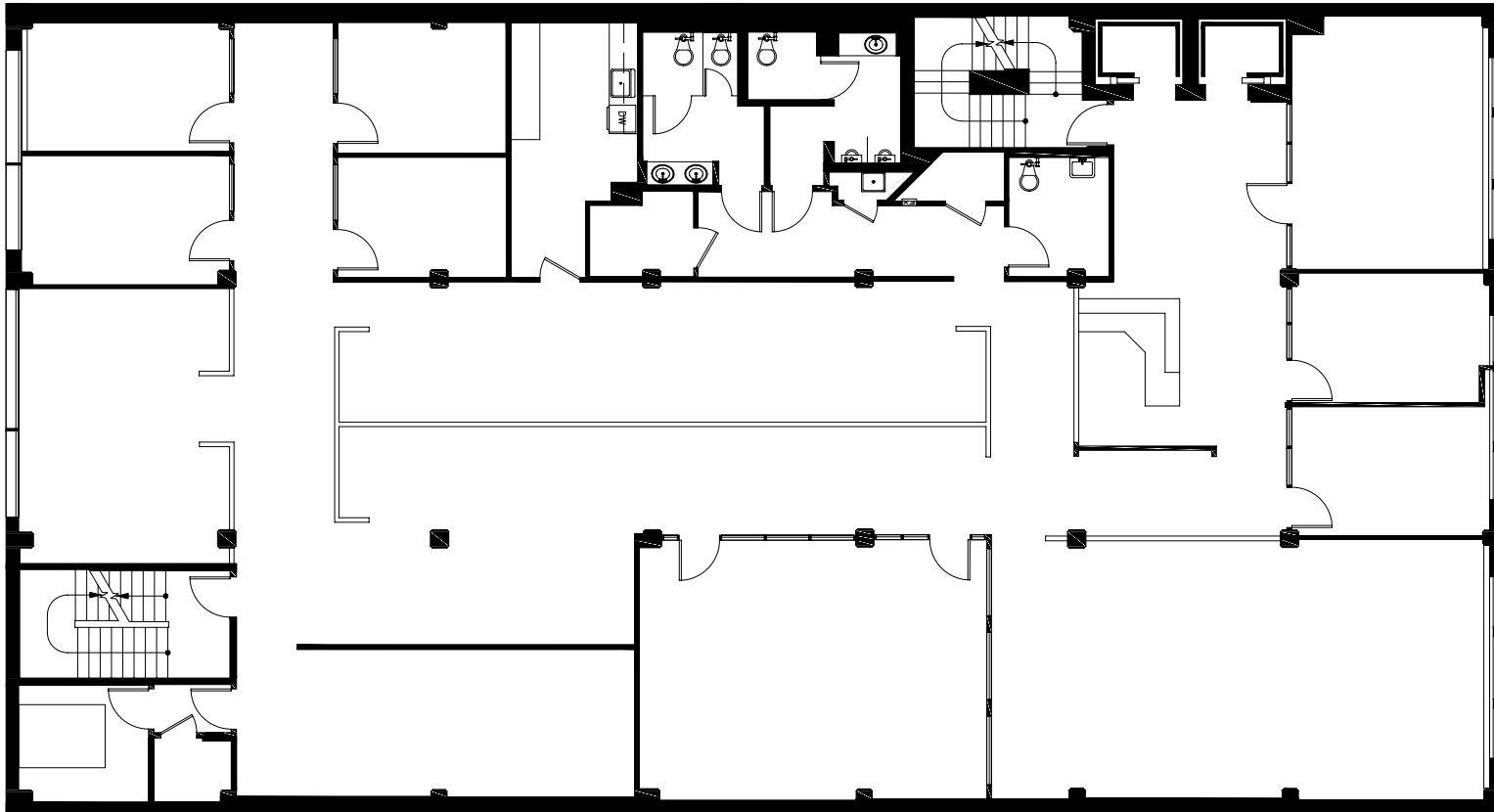
DAN DAHL  
206.650.6154  
dan.dahl@kidder.com

[KIDDER.COM](http://KIDDER.COM)

1417 4TH AVE

# FLOOR 6

6,745 SF



DAVID GURRY  
206.931.6474  
david.gurry@kidder.com

DAN DAHL  
206.650.6154  
dan.dahl@kidder.com

[KIDDER.COM](http://KIDDER.COM)

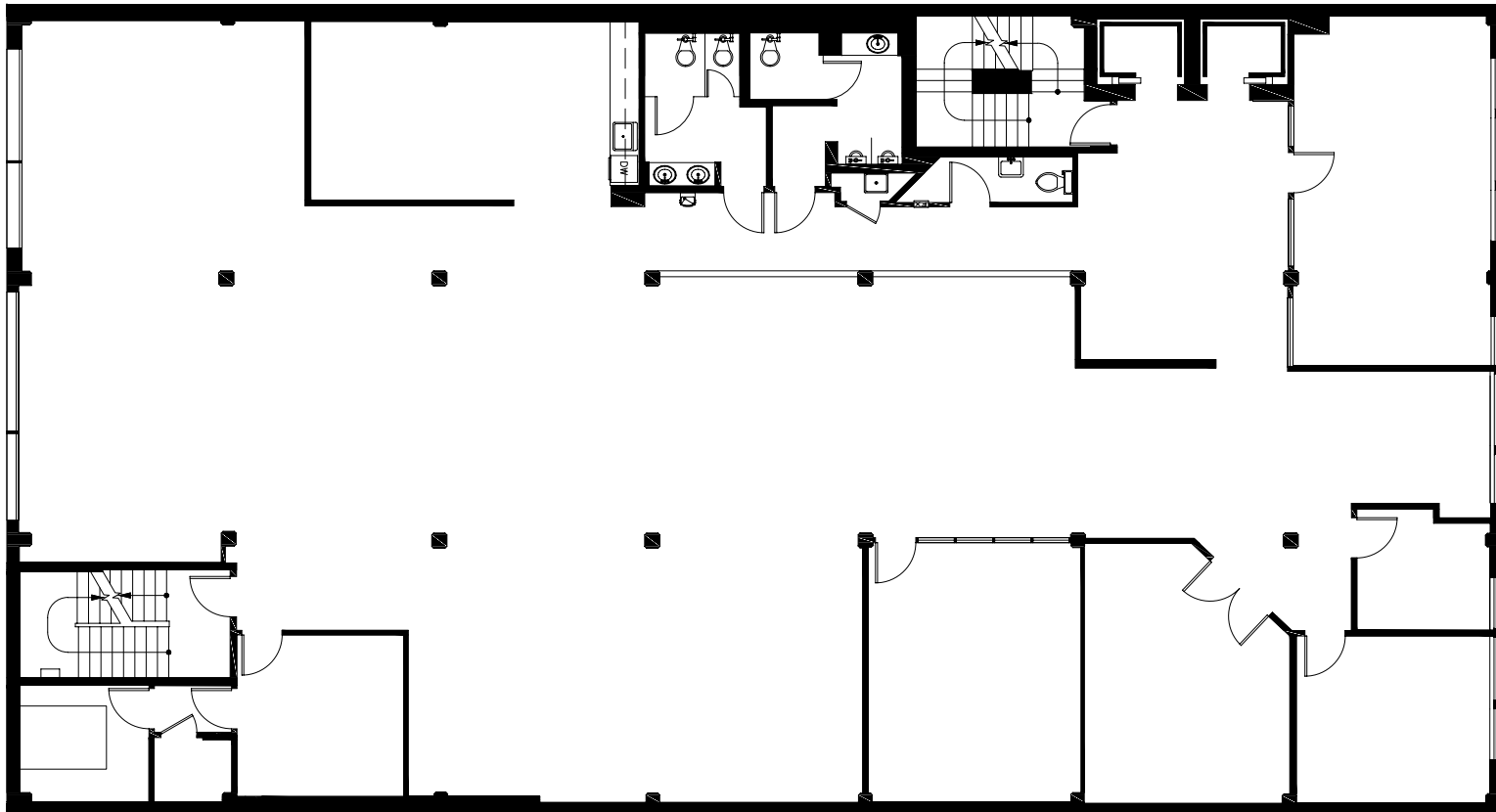
This information supplied herein is from sources we deem reliable. It is provided without any representation, warranty, or guarantee, expressed or implied as to its accuracy. Prospective Buyer or Tenant should conduct an independent investigation and verification of all matters deemed to be material, including, but not limited to, statements of income and expenses. Consult your attorney, accountant, or other professional advisor.



1417 4TH AVE

# FLOOR 7

6,760 SF



DAVID GURRY  
206.931.6474  
david.gurry@kidder.com

DAN DAHL  
206.650.6154  
dan.dahl@kidder.com

[KIDDER.COM](http://KIDDER.COM)

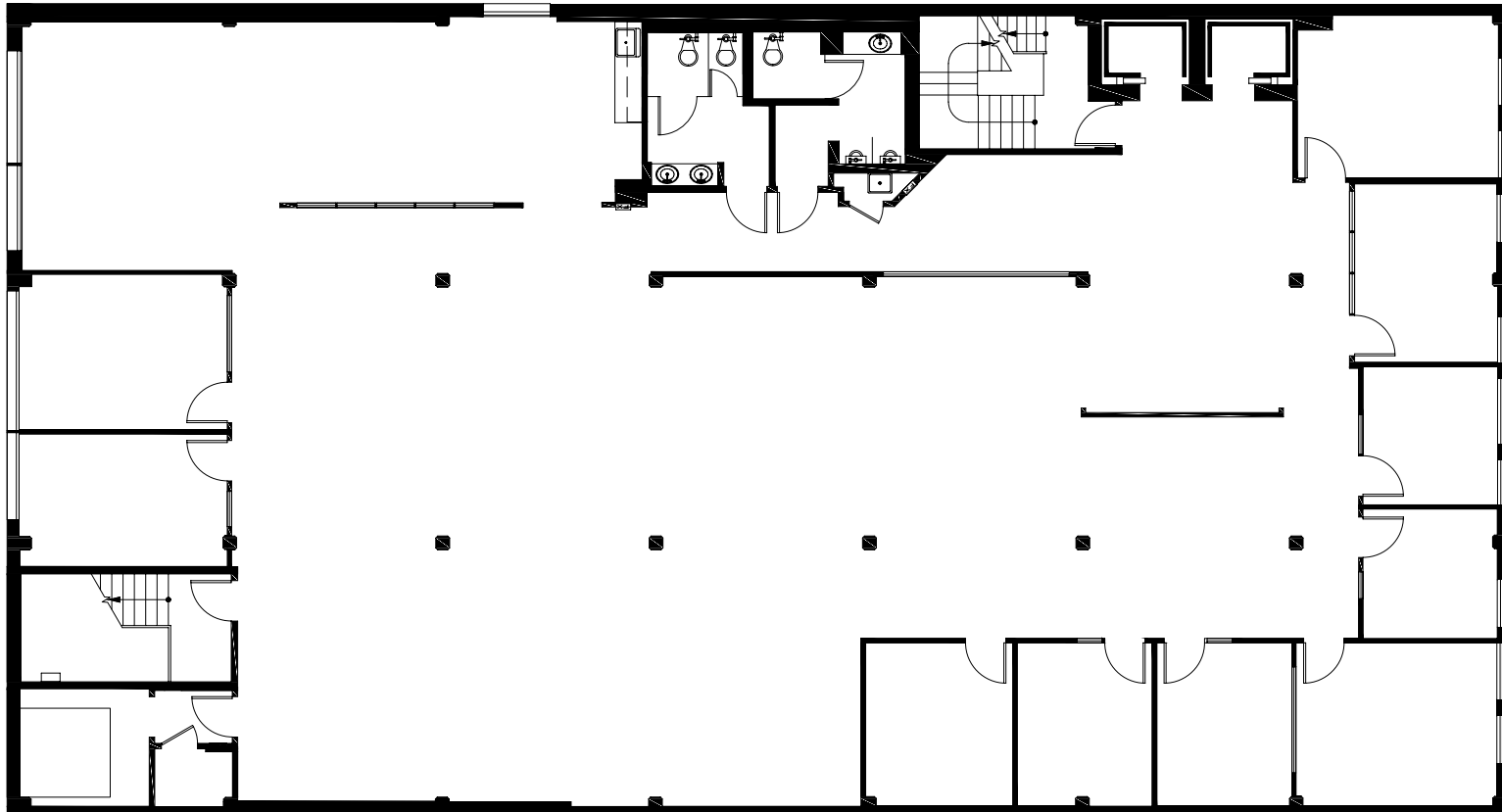
This information supplied herein is from sources we deem reliable. It is provided without any representation, warranty, or guarantee, expressed or implied as to its accuracy. Prospective Buyer or Tenant should conduct an independent investigation and verification of all matters deemed to be material, including, but not limited to, statements of income and expenses. Consult your attorney, accountant, or other professional advisor.



1417 4TH AVE

# FLOOR 8

6,780 SF



DAVID GURRY  
206.931.6474  
david.gurry@kidder.com

DAN DAHL  
206.650.6154  
dan.dahl@kidder.com

[KIDDER.COM](http://KIDDER.COM)

This information supplied herein is from sources we deem reliable. It is provided without any representation, warranty, or guarantee, expressed or implied as to its accuracy. Prospective Buyer or Tenant should conduct an independent investigation and verification of all matters deemed to be material, including, but not limited to, statements of income and expenses. Consult your attorney, accountant, or other professional advisor.

