



FOR LEASE

6659 Kimball Drive
Gig Harbor, WA 98335



BW Best Western
Hotels & Resorts

**PUGET SOUND
VETERINARY
SPECIALTY &
EMERGENCY**

**FIRE
EST.
GIG HARBOR
1945
MEDIC ONE**

Kimball Dr

PARK AND RIDE



THE WOODS BUSINESS PARK

Lisa Tallman

First Western Properties—Tacoma Inc. | 253.472.0404
6402 Tacoma Mall Blvd, Tacoma, WA 98409 | fwp-inc.com

THE WOODS BUSINESS PARK sits adjacent to 24-hour staffed Gig Harbor Fire & Medic One Station - District 5 & Kimball Drive Park and Ride. The 35,000± SF five building multi-tenant has a nice mix of retail and professional tenants and has natural Northwest landscaping and architectural wood post & beam, with exposed ceilings and skylights. The well stabilized traditional business park setting is just minutes from SR 16.

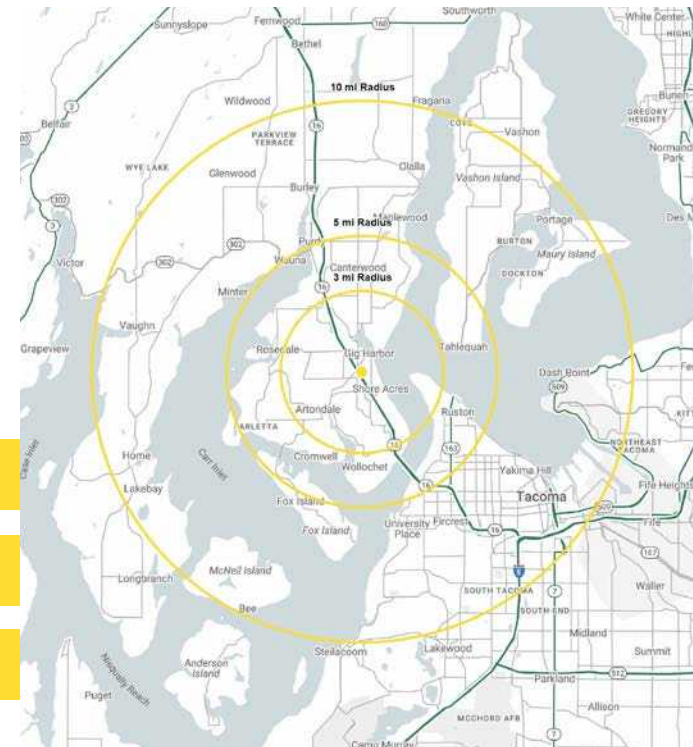
6659 KIMBALL DRIVE

- ▶ **C-308: 1,055 SF± \$19.00 SF, NNN**
- ▶ **D-404: 1,150 SF± \$19.00 SF, NNN**
(SUBLEASE)
- ▶ **E-502: 2,212 SF± \$19.00 SF, NNN**

- PLEASE DO NOT DISTURB TENANTS.
- Showings by Appointment Only
- Ample On-site Parking: 3.9/1,000
- Zoned General Business District (B-2), City of Gig Harbor
- 2024 NNN Estimates are \$5.45 SF

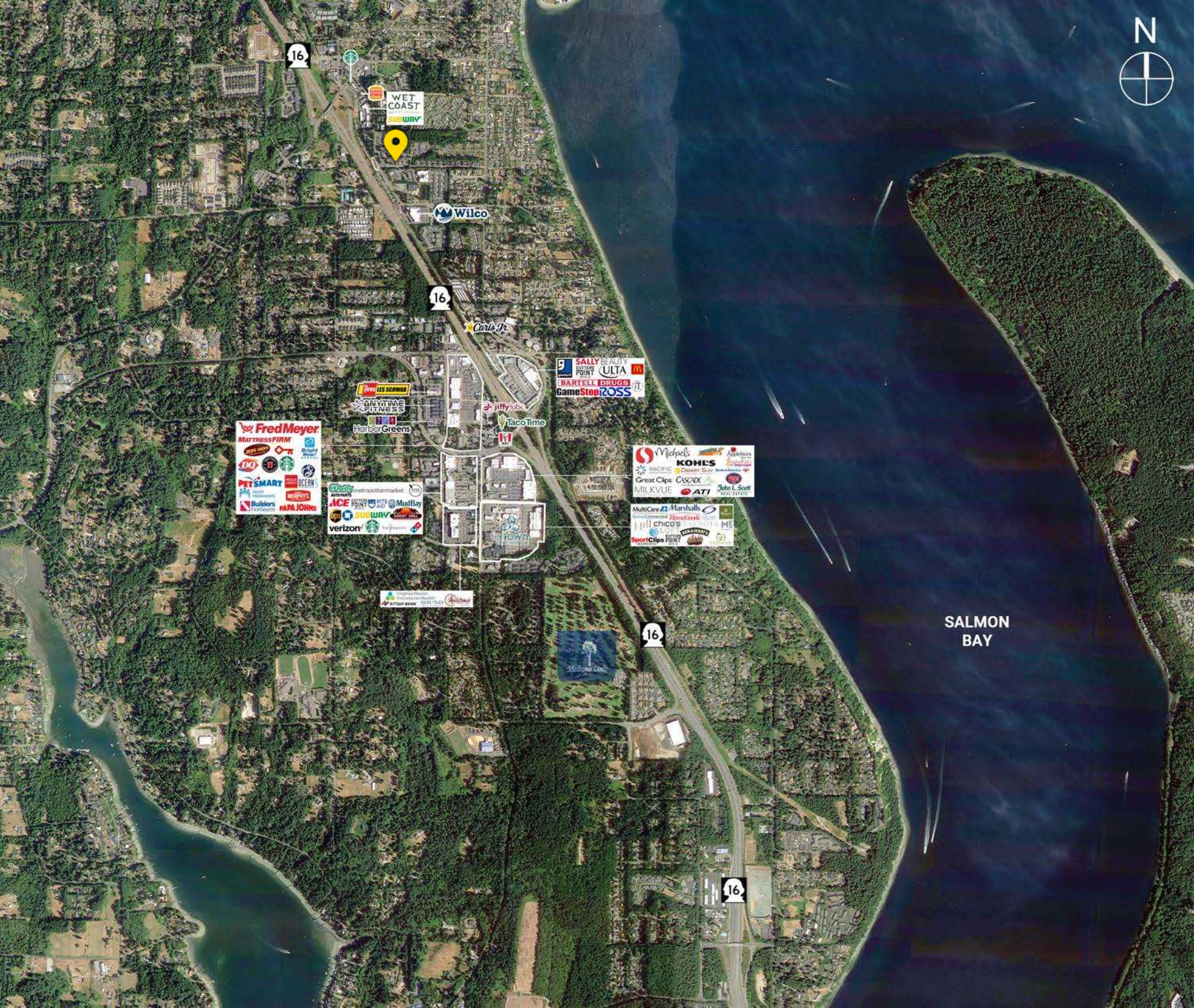
Regis - 2023	Population	Average HH Income	Daytime Population
Mile 3	26,360	\$162,344	1,532
Mile 5	72,533	\$168,250	20,959
Mile 10	318,148	\$132,36	114,177

NEARBY TENANTS





SALMON BAY



16

16

16

16

WET COAST
SUBWAY

Wilco

Carl's Jr.

SALLY BEAUTY
POINT ULTA
BARTLETT DRUGS
GameStop ROSS

LES SCHWARZ

SANITY TIME FITNESS

jiffy lube

Taco Time

Fred Meyer
MATTRESS FIRM

Harbor Greens

PETSMART
MATTRESS FIRM
OCEAN
Bulldozers
PAPA JOHN'S

metropolitanmarket
ACE HARDWARE
BATTERY
RITE AID
Mud Bay
verizon
starbucks

Michaels
KOHLS
RACIFIC
Great Clips
MILKVUE
AT&T

MultiCare
Marshall's
chico's
Spot Clips

WET COAST
SUBWAY
KITTAP BANK

LOCATION AERIAL





GIG HARBOR, WA is both a bay on the Puget Sound and a harbor town that has been named one of the Smithsonian Magazines Top Five Small Towns for culture, heritage and charm. Its unique location, close to metropolitan centers, yet positioned on a quiet, beautiful and historic peninsula - provides visitors and residents with excellent site-seeing, history, culture, dining, shopping and more.

TACOMA | KIRKLAND | PORTLAND | SEATTLE

MEDICAL

RELATIONSHIP FOCUSED.
RESULTS DRIVEN.

BW | Best Western
Hotels & Resorts

LISA TALLMAN

📞 253.471.5504

✉️ lisa@firstwesternproperties.com

PUGET SOUND
VETERINARY
SPECIALTY &
EMERGENCY



Kimball Dr

PARK AND RIDE

First Western Properties—Tacoma Inc. | 253.472.0404
6402 Tacoma Mall Blvd, Tacoma, WA 98409 | fwp-inc.com

© First Western Properties, Inc. Sources believed to be reliable.
DISCLAIMER: The above information has been secured from sources believed to be reliable, however, no representations are made to its accuracy. Prospective tenants or buyers should consult their professional advisors and conduct their own independent investigation. Properties are subject to change in price and/or availability without notice.