

FOR LEASE

# PREFONTAINE BUILDING

110 PREFONTAINE PL S  
SEATTLE, WA

KIDDER.COM

 Kidder  
Mathews

# PREFONTAINE BUILDING

## OFFICE AVAILABILITY

Suite 030	958 SF	<a href="#">VIEW FLOORPLAN</a>
Suite 100A	1,193 SF	<a href="#">VIEW FLOORPLAN</a>
Suite 100	800 SF	<a href="#">VIEW FLOORPLAN</a>
Suite 101	800 SF	<a href="#">VIEW FLOORPLAN</a>
Suite 106	1,466 SF	<a href="#">VIEW FLOORPLAN</a>
Suite 112	3,190 SF	<a href="#">VIEW FLOORPLAN</a>
Suite 204	907 SF	<a href="#">VIEW FLOORPLAN</a>
Suite 206*	2,194 SF	<a href="#">VIEW FLOORPLAN</a>
Suite 210	1,774 SF	<a href="#">VIEW FLOORPLAN</a>
Suite 300	4,737 SF	<a href="#">VIEW FLOORPLAN</a>
Suite 402	400 SF	<a href="#">VIEW FLOORPLAN</a>
Suite 404B	180 SF	<a href="#">VIEW FLOORPLAN</a>
Suite 410	1,388 SF	<a href="#">VIEW FLOORPLAN</a>
Suite 602	1,457 SF	<a href="#">VIEW FLOORPLAN</a>
Suite 608	2,800 SF	<a href="#">VIEW FLOORPLAN</a>
Suite 610	1,935 SF	<a href="#">VIEW FLOORPLAN</a>



*\$28/SF/YEAR*  
ASKING RATE, FULL SERVICE

*98*  
WALK SCORE

*100*  
TRANSIT SCORE

# PREFONTAINE BUILDING



BLOCKS FROM  
PIONEER SQUARE  
LINK STATION &  
AMTRAK STATION



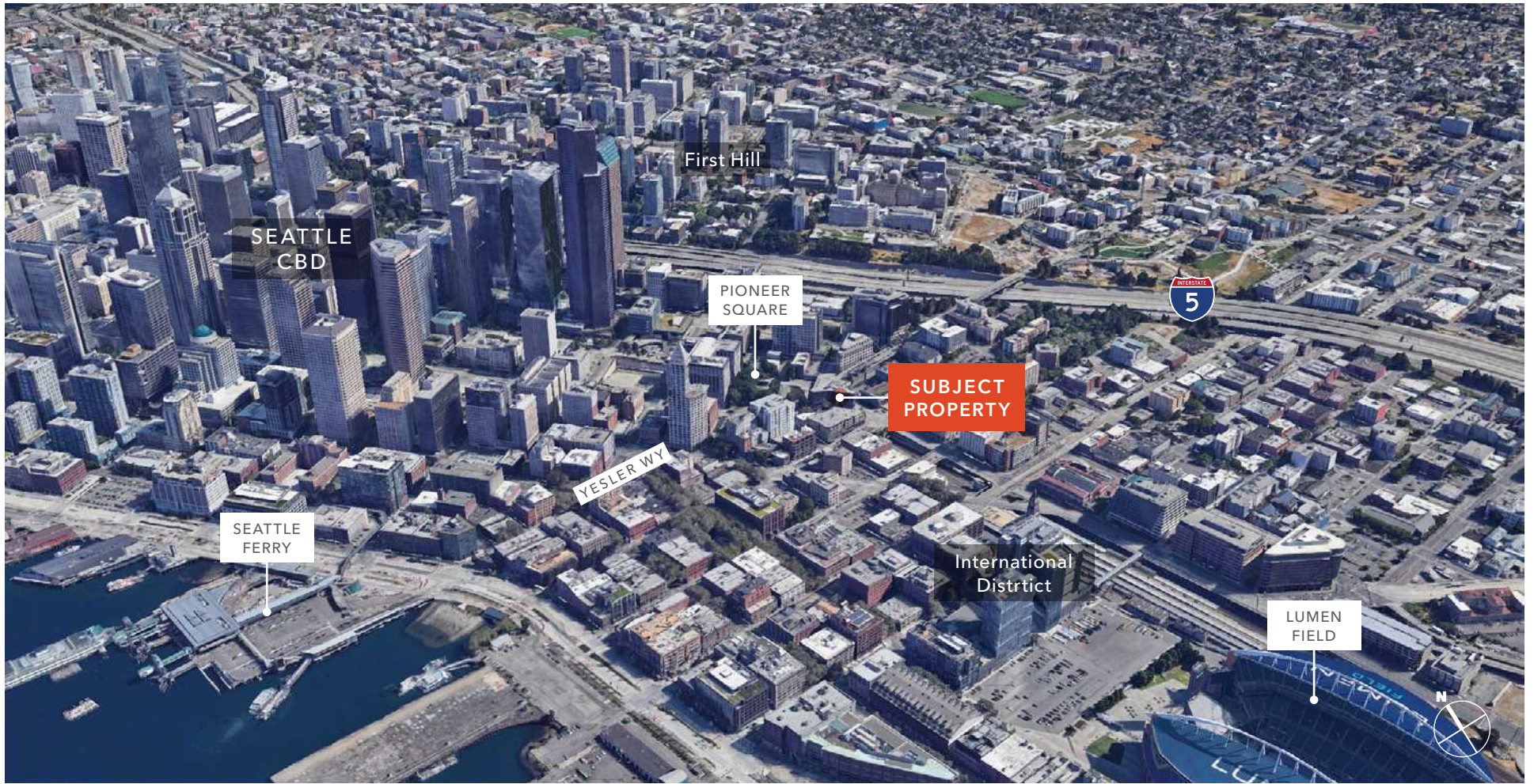
VIEWS OF PUGET  
SOUND



ON MAJOR BUS  
ROUTES WITH  
EXCELLENT  
FREEWAY ACCESS



ABUNDANT  
NATURAL LIGHT



# PREFONTAINE BUILDING

*Exclusively leased by*

**DAN DAHL**  
206.650.6154  
dan.dahl@kidder.com

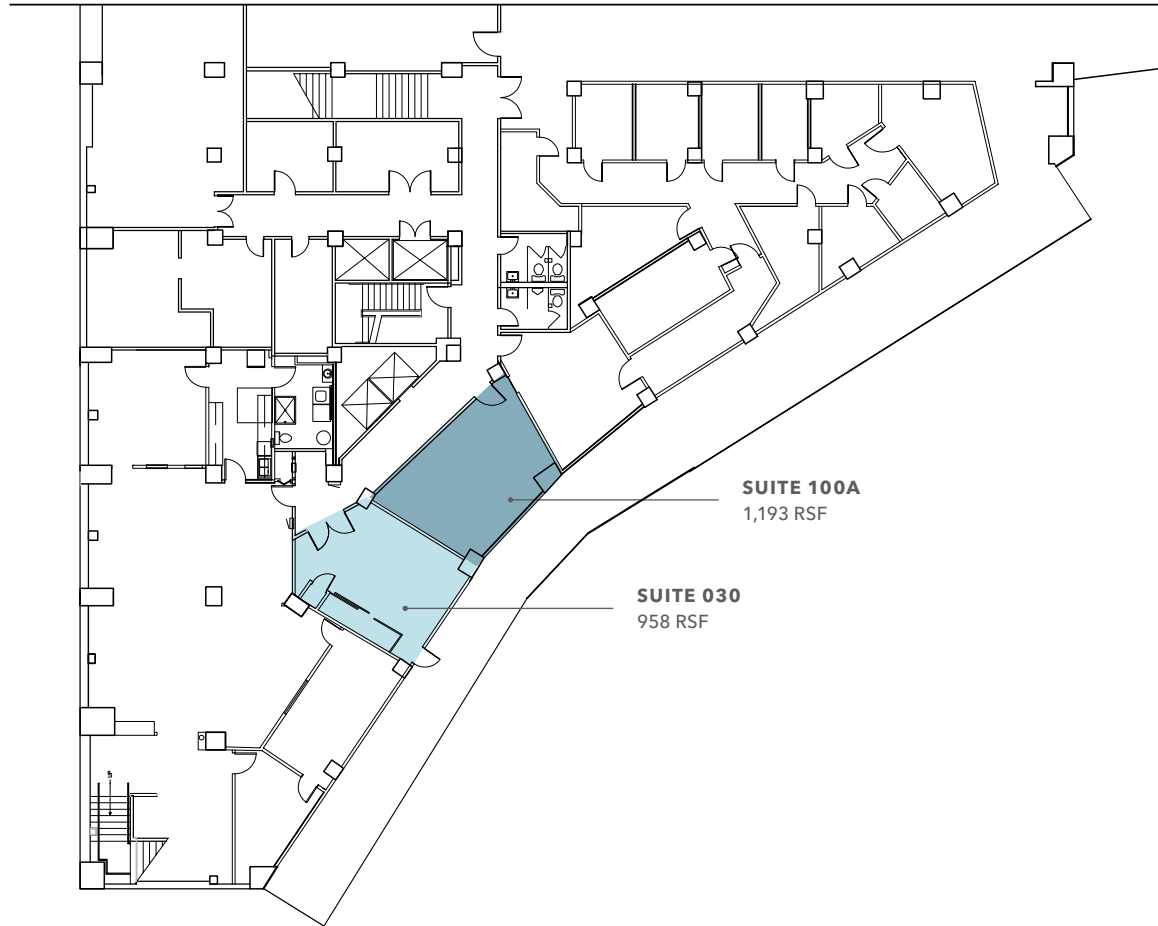
**DAVID GURRY**  
206.931.6474  
david.gurry@kidder.com

**KIDDER.COM**

This information supplied herein is from sources we deem reliable. It is provided without any representation, warranty, or guarantee, expressed or implied as to its accuracy. Prospective Buyer or Tenant should conduct an independent investigation and verification of all matters deemed to be material, including, but not limited to, statements of income and expenses. Consult your attorney, accountant, or other professional advisor.



# BASEMENT



**SUITE 100A**  
1,193 RSF

**SUITE 030**  
958 RSF

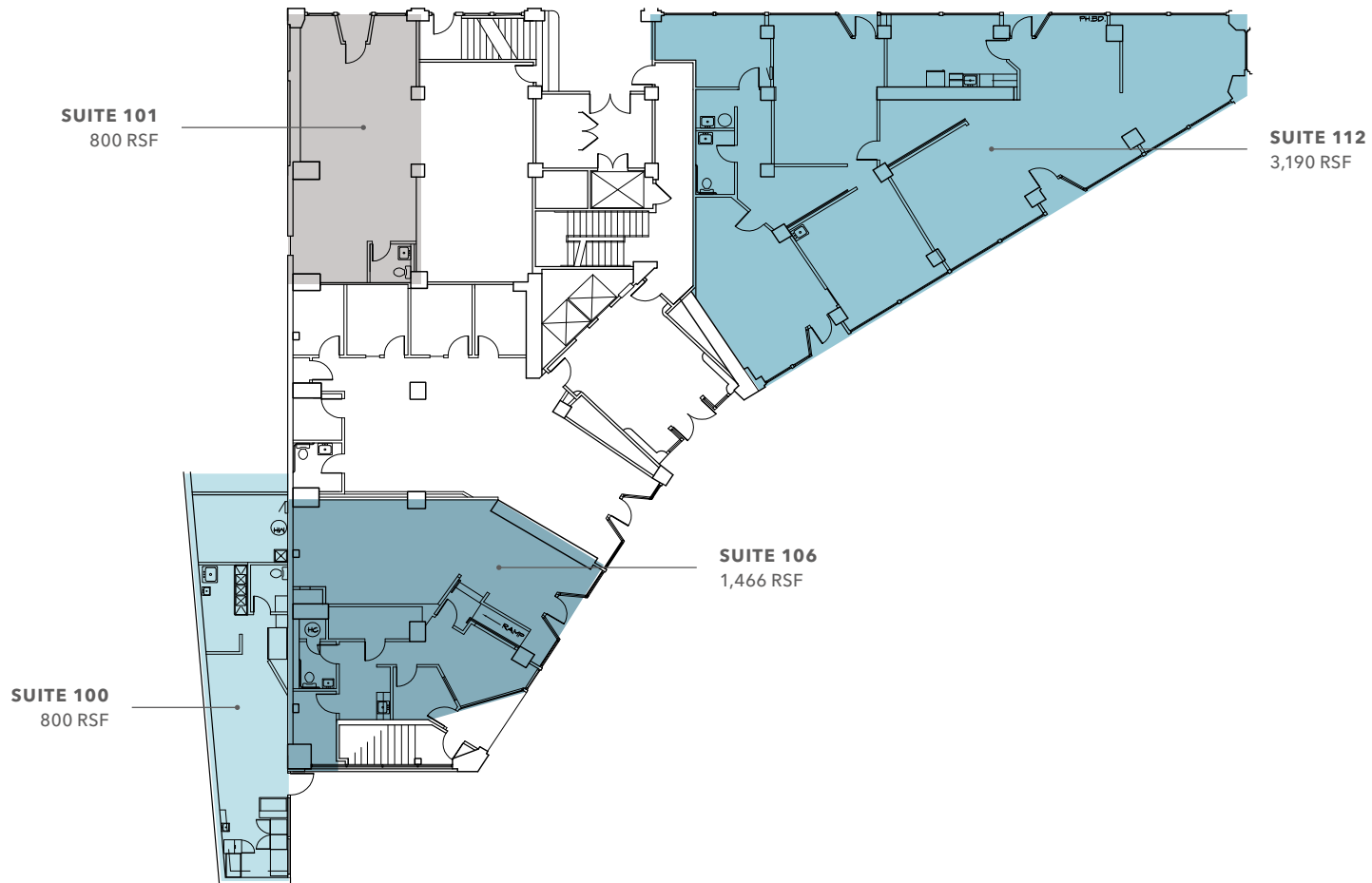
**DAVID GURRY**  
206.931.6474  
david.gurry@kidder.com

**DAN DAHL**  
206.650.6154  
dan.dahl@kidder.com

**KIDDER.COM**

This information supplied herein is from sources we deem reliable. It is provided without any representation, warranty, or guarantee, expressed or implied as to its accuracy. Prospective Buyer or Tenant should conduct an independent investigation and verification of all matters deemed to be material, including, but not limited to, statements of income and expenses. Consult your attorney, accountant, or other professional advisor.

# FIRST FLOOR



**DAVID GURRY**  
206.931.6474  
david.gurry@kidder.com

**DAN DAHL**  
206.650.6154  
dan.dahl@kidder.com

[KIDDER.COM](http://KIDDER.COM)

This information supplied herein is from sources we deem reliable. It is provided without any representation, warranty, or guarantee, expressed or implied as to its accuracy. Prospective Buyer or Tenant should conduct an independent investigation and verification of all matters deemed to be material, including, but not limited to, statements of income and expenses. Consult your attorney, accountant, or other professional advisor.

# SECOND FLOOR



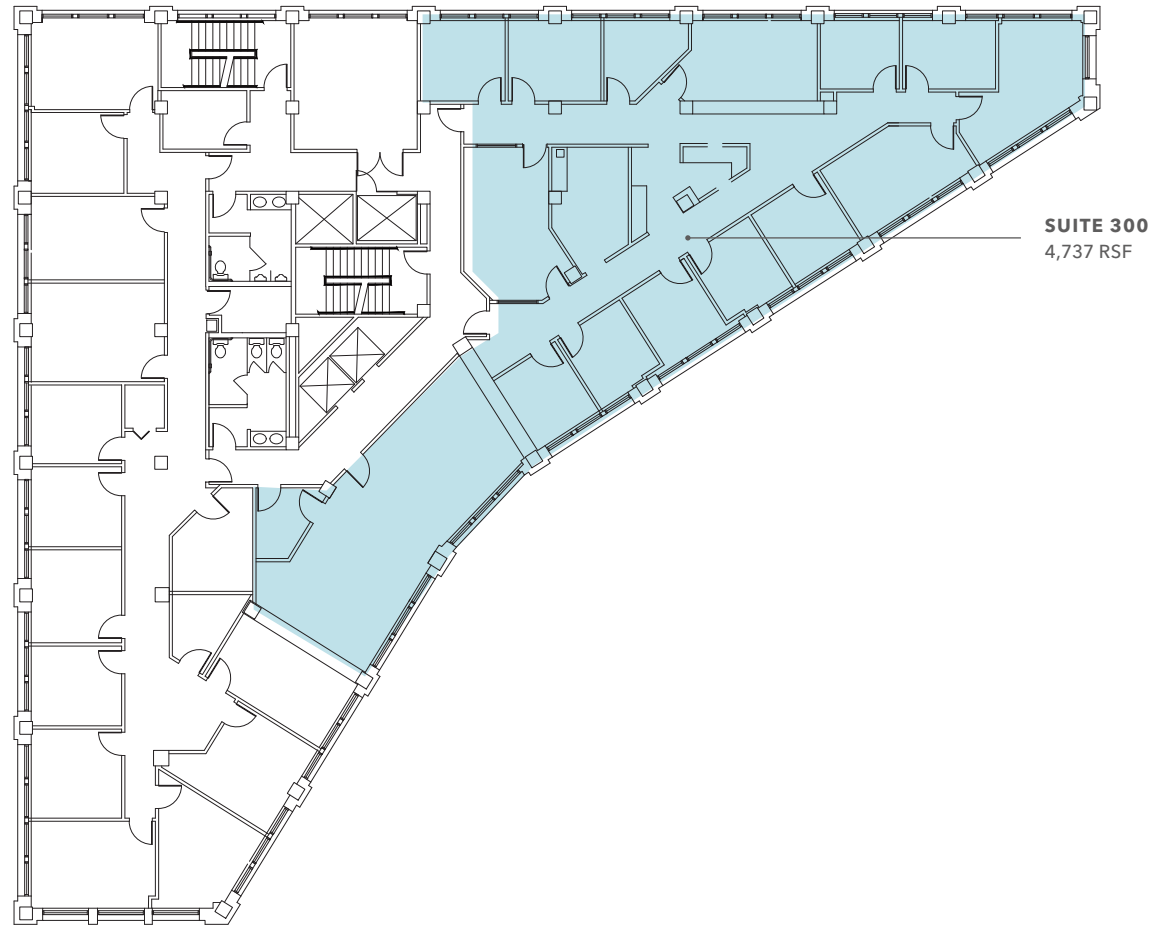
**DAVID GURRY**  
206.931.6474  
david.gurry@kidder.com

**DAN DAHL**  
206.650.6154  
dan.dahl@kidder.com

[KIDDER.COM](http://KIDDER.COM)

This information supplied herein is from sources we deem reliable. It is provided without any representation, warranty, or guarantee, expressed or implied as to its accuracy. Prospective Buyer or Tenant should conduct an independent investigation and verification of all matters deemed to be material, including, but not limited to, statements of income and expenses. Consult your attorney, accountant, or other professional advisor.

# THIRD FLOOR



**DAVID GURRY**  
206.931.6474  
david.gurry@kidder.com

**DAN DAHL**  
206.650.6154  
dan.dahl@kidder.com

[KIDDER.COM](http://KIDDER.COM)

This information supplied herein is from sources we deem reliable. It is provided without any representation, warranty, or guarantee, expressed or implied as to its accuracy. Prospective Buyer or Tenant should conduct an independent investigation and verification of all matters deemed to be material, including, but not limited to, statements of income and expenses. Consult your attorney, accountant, or other professional advisor.



# FOURTH FLOOR



**DAVID GURRY**  
206.931.6474  
david.gurry@kidder.com

**DAN DAHL**  
206.650.6154  
dan.dahl@kidder.com

[KIDDER.COM](http://KIDDER.COM)

This information supplied herein is from sources we deem reliable. It is provided without any representation, warranty, or guarantee, expressed or implied as to its accuracy. Prospective Buyer or Tenant should conduct an independent investigation and verification of all matters deemed to be material, including, but not limited to, statements of income and expenses. Consult your attorney, accountant, or other professional advisor.

# SIXTH FLOOR



**DAVID GURRY**  
206.931.6474  
david.gurry@kidder.com

**DAN DAHL**  
206.650.6154  
dan.dahl@kidder.com

**KIDDER.COM**

This information supplied herein is from sources we deem reliable. It is provided without any representation, warranty, or guarantee, expressed or implied as to its accuracy. Prospective Buyer or Tenant should conduct an independent investigation and verification of all matters deemed to be material, including, but not limited to, statements of income and expenses. Consult your attorney, accountant, or other professional advisor.