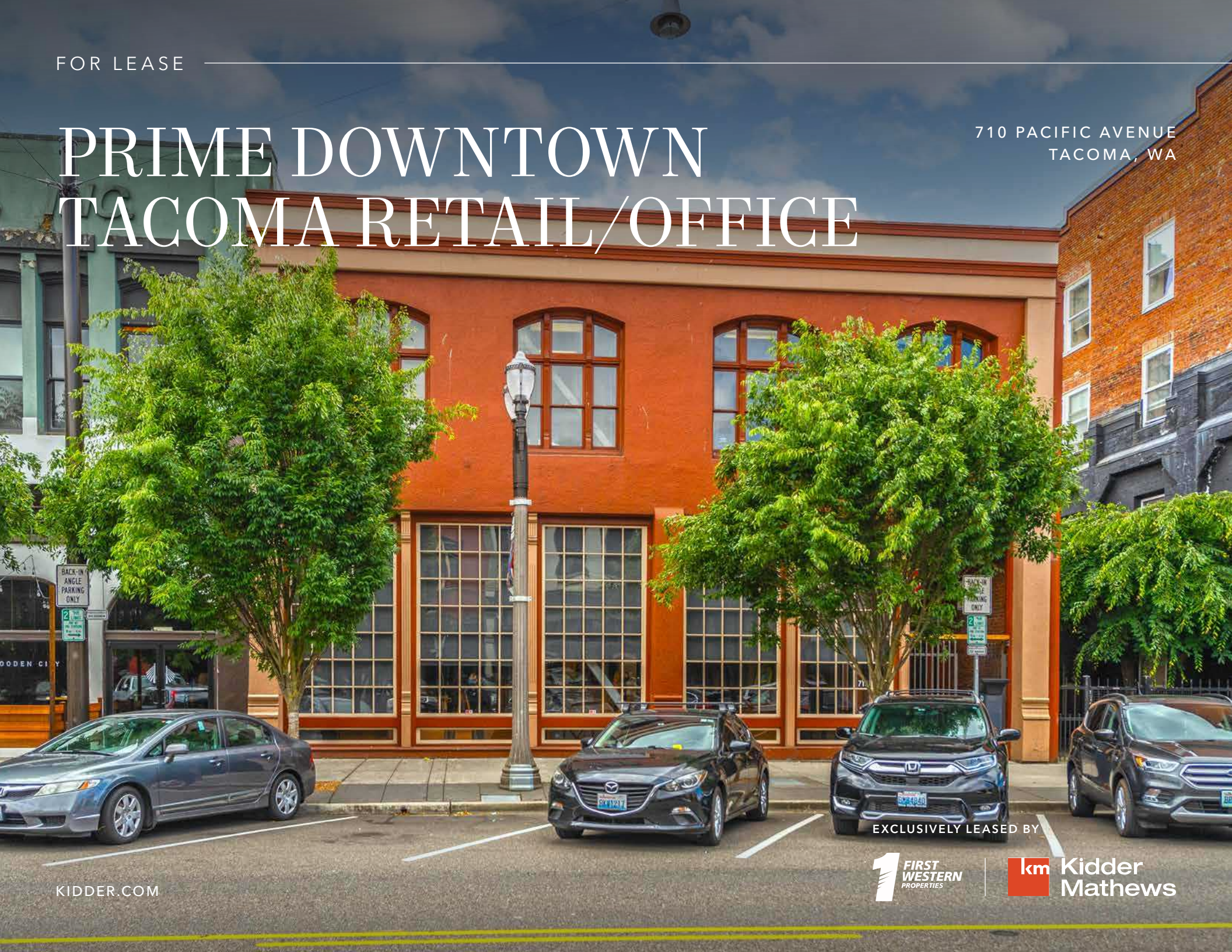


FOR LEASE

# PRIME DOWNTOWN TACOMA RETAIL/OFFICE

710 PACIFIC AVENUE  
TACOMA, WA



KIDDER.COM



EXCLUSIVELY LEASED BY

## Remodeled Building with Historic Charm

First floor - 5,016 SF available

\$25.00 - \$28.00 PSF, modified gross

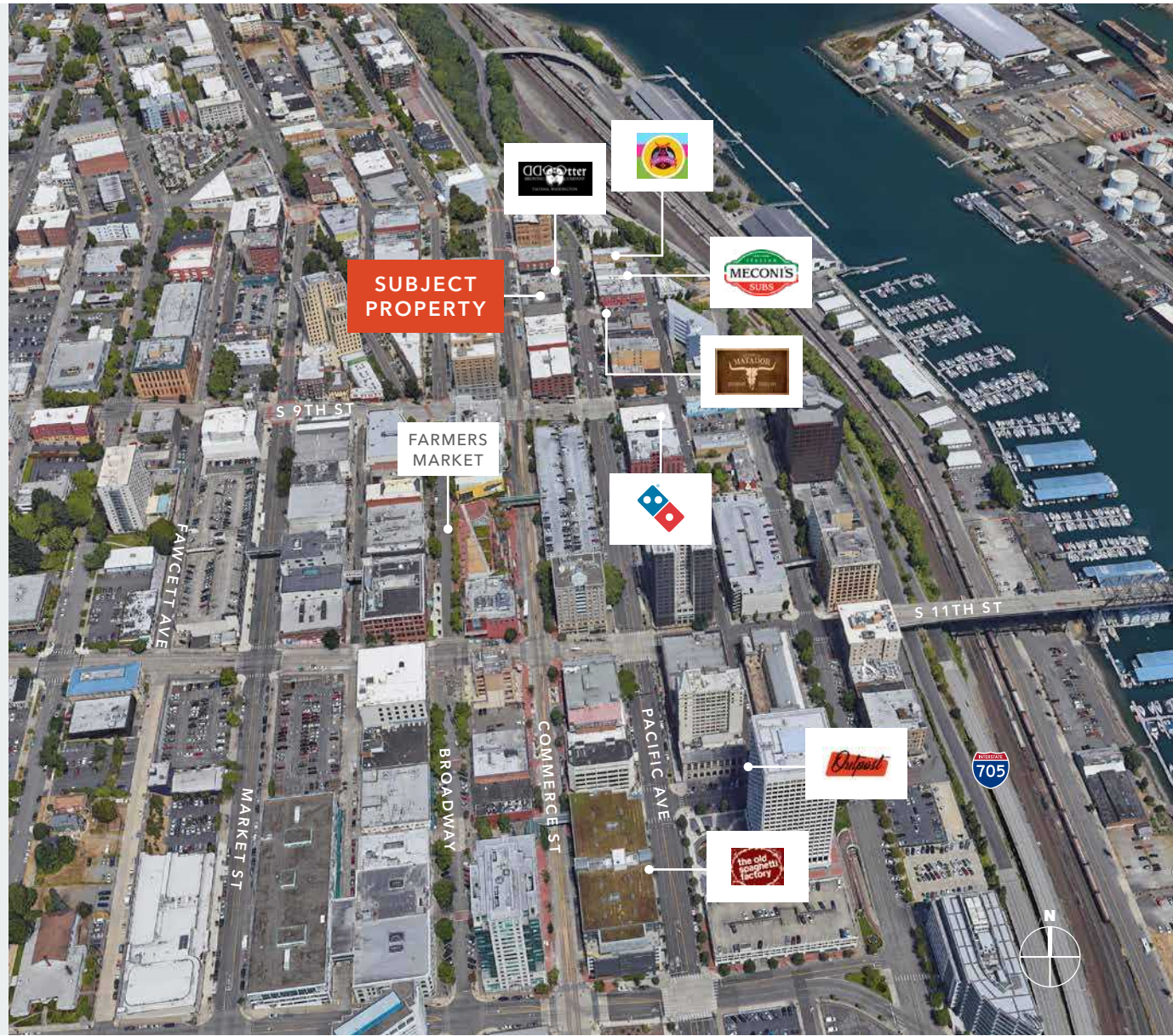
The building allows for installation of a hood and venting system, making it suitable for restaurant use

Public on-street parking directly in front of building and behind the building on Commerce Street/numerous convenient parking garages nearby

Historic charm, seismic upgrades, high ceilings with open beam construction, exceptional natural light

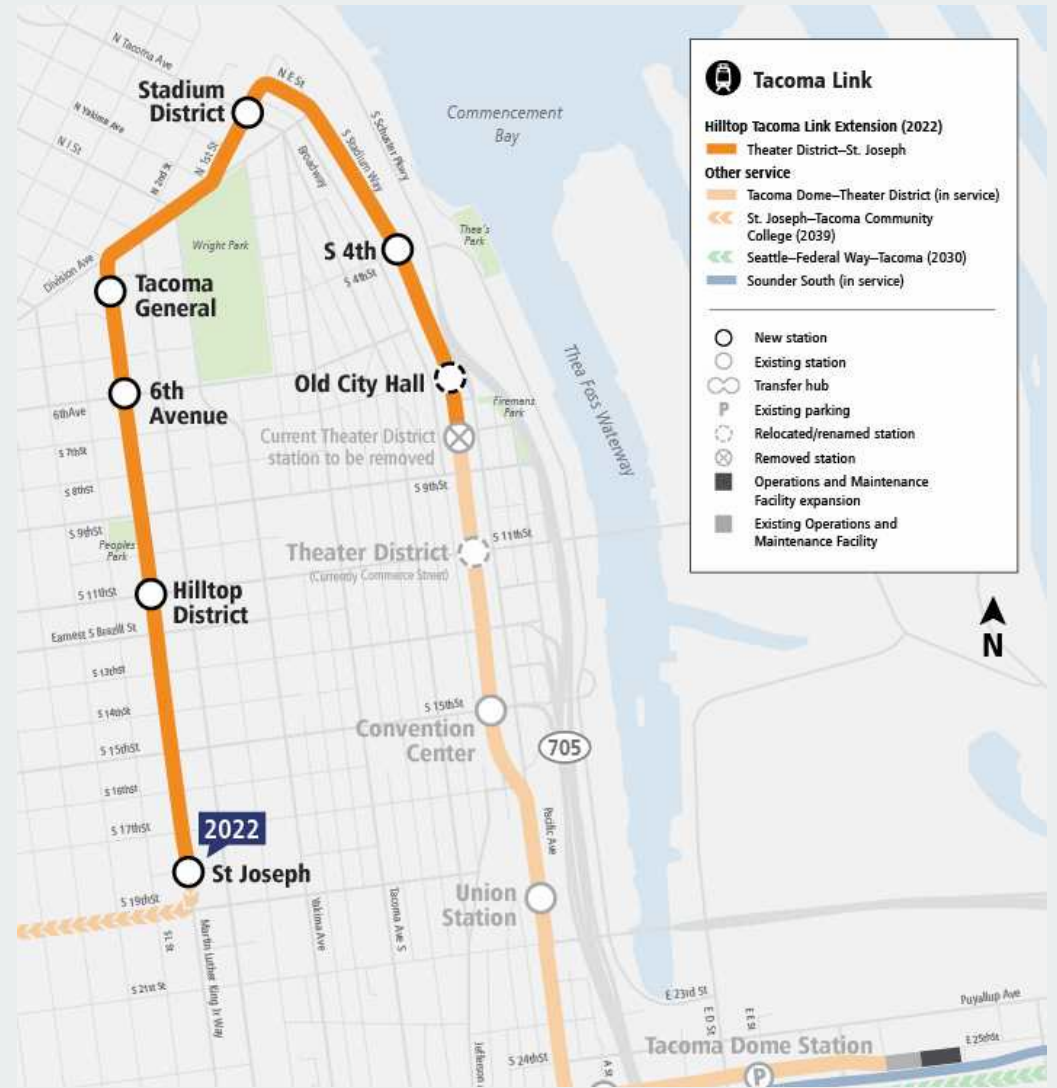
In the heart of Downtown Tacoma's entertainment district

Near "Link" Light Rail Station and numerous restaurants including McMenamins, Matador, Wooden City, etc.





LINK ROUTE | LINK TO CONTINUE TO STADIUM DISTRICT







SUBJECT  
PROPERTY



SUBJECT  
PROPERTY

# FIRST FLOOR PLAN

*5,016 SF*

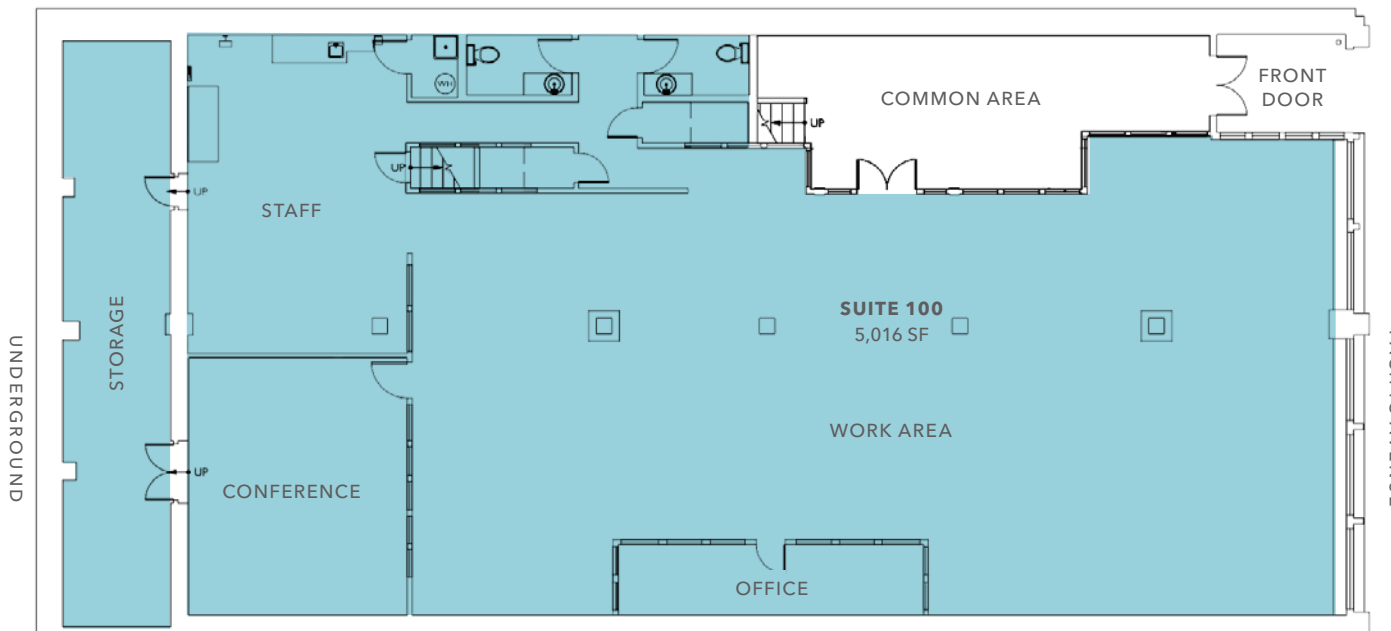
SUITE 100

*\$25.00 - \$28.00*

PSF, MODIFIED GROSS

*NOW*

AVAILABLE



# 710 PACIFIC AVE

*Exclusively leased by*

**WILL FRAME**  
Kidder Mathews  
253.722.1412  
will.frame@kidder.com

**DREW FRAME**  
Kidder Mathews  
253.722.1433  
drew.frame@kidder.com

**BLAKE WEBER**  
First Western Properties  
206.898.1231  
bweber@firstwesternproperties.com

**NED WHALEN**  
First Western Properties  
206.491.5998  
nwhalen@firstwesternproperties.com

[KIDDER.COM](http://KIDDER.COM)

This information supplied herein is from sources we deem reliable. It is provided without any representation, warranty, or guarantee, expressed or implied as to its accuracy. Prospective Buyer or Tenant should conduct an independent investigation and verification of all matters deemed to be material, including, but not limited to, statements of income and expenses. Consult your attorney, accountant, or other professional advisor.

