

# FOR LEASE

**MALT HOUSE RETAIL SPACE**  
515 LEGION WAY SE, OLYMPIA, WA 98501



**LEASE RATE: 1,720 SF @ \$34/SF plus utilities**

**Ready for Occupancy Fall of 2024**



**Debbie Draper-Aikins**

360 791 3869

[debbie.draper@cbolympia.com](mailto:debbie.draper@cbolympia.com)



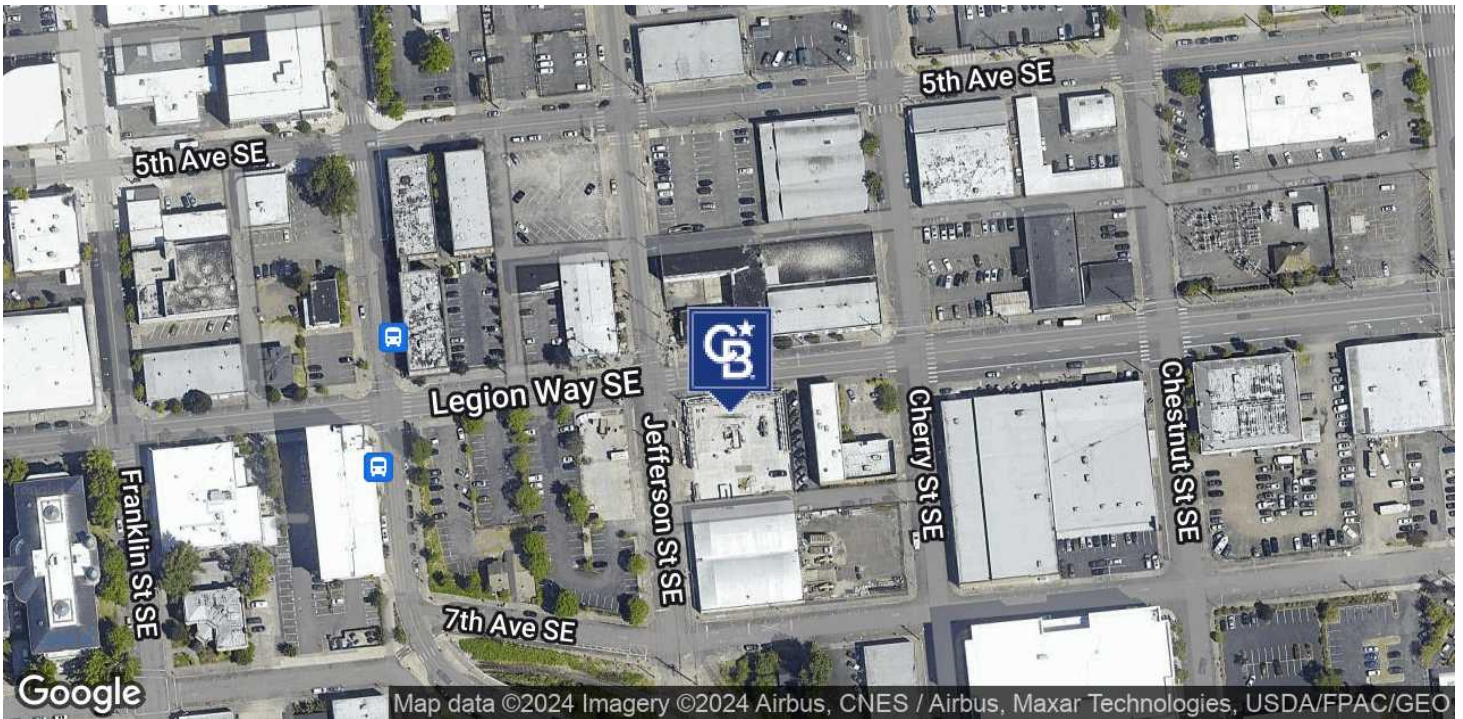
**COLDWELL BANKER  
COMMERCIAL**

**EVERGREEN OLYMPIC  
REALTY, INC.**

# LEASE

## MALT HOUSE RETAIL SPACE

515 Legion Way SE Olympia, WA 98501



### PROPERTY DESCRIPTION

1720 square feet of retail space will be available with great visibility on Legion. Generous tenant improvement allowance for qualified tenants

### PROPERTY HIGHLIGHTS

- Ready for occupancy Fall of 2024
- Malt House is the latest multi-family mixed use project by Urban Olympia
- Malt House will feature 57 apartments (45 studios, 9 one bedroom and 3 two bedrooms)

### OFFERING SUMMARY

Lease Rate:	\$34.00 SF/yr (Plus Utilities)
Available SF:	1,720 SF
Building Size:	48,552 SF
Zoning:	DB
APN:	78505600100

DEMOGRAPHICS	1 MILE	5 MILES	10 MILES
Total Households	4,748	56,069	96,772
Total Population	9,278	134,131	241,384
Average HH Income	\$95,967	\$104,054	\$111,967

**Debbie Draper-Aikins**  
360 791 3869  
debbie.draper@cbolympia.com



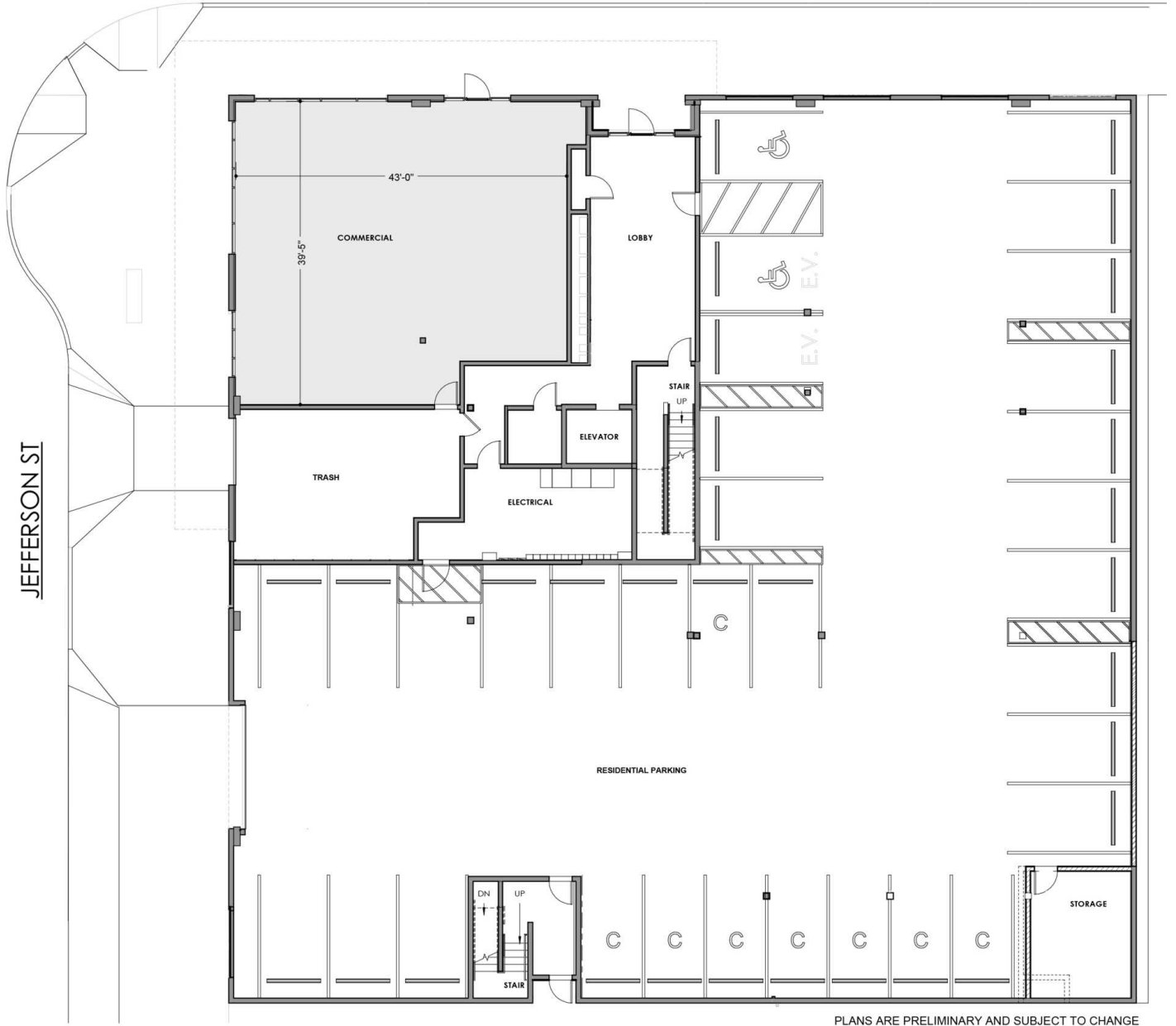
**COLDWELL BANKER  
COMMERCIAL**  
EVERGREEN OLYMPIC  
REALTY, INC.

# LEASE

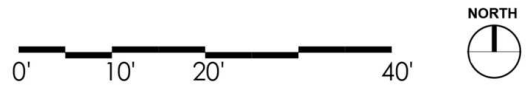
## MALT HOUSE RETAIL SPACE

515 Legion Way SE Olympia, WA 98501

LEGION WAY



PLANS ARE PRELIMINARY AND SUBJECT TO CHANGE



**Debbie Draper-Aikins**  
360 791 3869  
debbie.draper@cbolympia.com

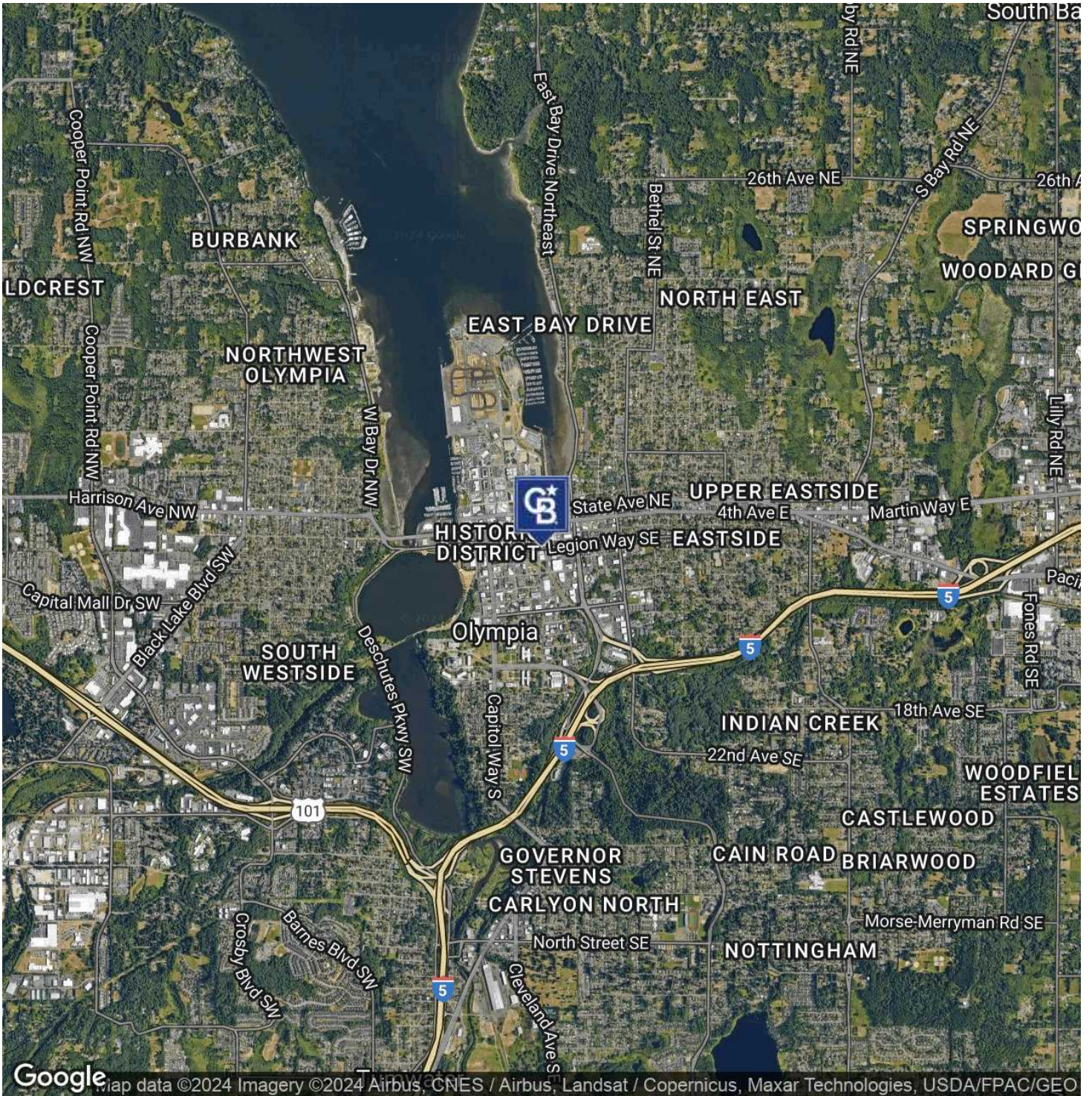


**COLDWELL BANKER  
COMMERCIAL**  
EVERGREEN OLYMPIC  
REALTY, INC.

# LEASE

## MALT HOUSE

515 Legion Way SE Olympia, WA 98501



**Debbie Draper-Aikins**  
360 791 3869  
debbie.draper@cbolympia.com



**COLDWELL BANKER  
COMMERCIAL**  
EVERGREEN OLYMPIC  
REALTY, INC.