



CHELSEA

AT JUANITA VILLAGE



LEASING OPPORTUNITIES

11718 97TH LN NE, KIRKLAND, WA 98034

EURO STYLE MEETS JUANITA BEACH

A LIFE WELL-LIVED

Chelsea at Juanita Village is a charming, european-style walkable community center located near the Juanita Bay waterfront in Kirkland, Washington. The project's ground-floor retail serves a captive audience of affluent young and active professionals in 1,000+ residential units and benefits from an established node nearby daytime population.

Chelsea at Juanita Village is just minutes away from Downtown Kirkland, Kirkland Urban Mall and The Village at Totem Lake, featuring Whole Foods, Nordstrom Rack, Trader Joe's.

LEASING HIGHLIGHTS

ONE SPACE REMAINS!

R1.01: UP TO 3,739 SF \$43.00 PSF

PLUS NNN / \$12.85 PSF

AMPLE SURFACE & GARAGE PARKING

NEARBY TENANTS



Walgreens



urban
COFFEE
lounge

DEMOGRAPHICS



TRADE AREA Drive Time Analysis

	Population	Total Employees	Average Household Income	Median Age	Households	White Collar Workers %
5 MINUTES	27,034	11,550	\$187,562	36.7	11,272	81.3%
7 MINUTES	48,537	19,110	\$189,954	37.2	21,132	81.0%
10 MINUTES	82,565	34,697	\$199,305	37.0	35,356	80.5%

THE AREA



**126,824 HOUSEHOLDS
5 MILE RADIUS**



**CENTRALLY LOCATED TO
TOTEM LAKE & DOWNTOWN KIRKLAND**



**THRIVING BUSINESS
ENVIRONMENT**



**SEVEN MINUTES
FROM 1-405**

A THRIVING WATERFRONT DESTINATION



AMPLE PARKING | 1,000+ ADJACENT RESIDENTIAL UNITS | RESTAURANTS | PUBLIC PARKS | BEACHES

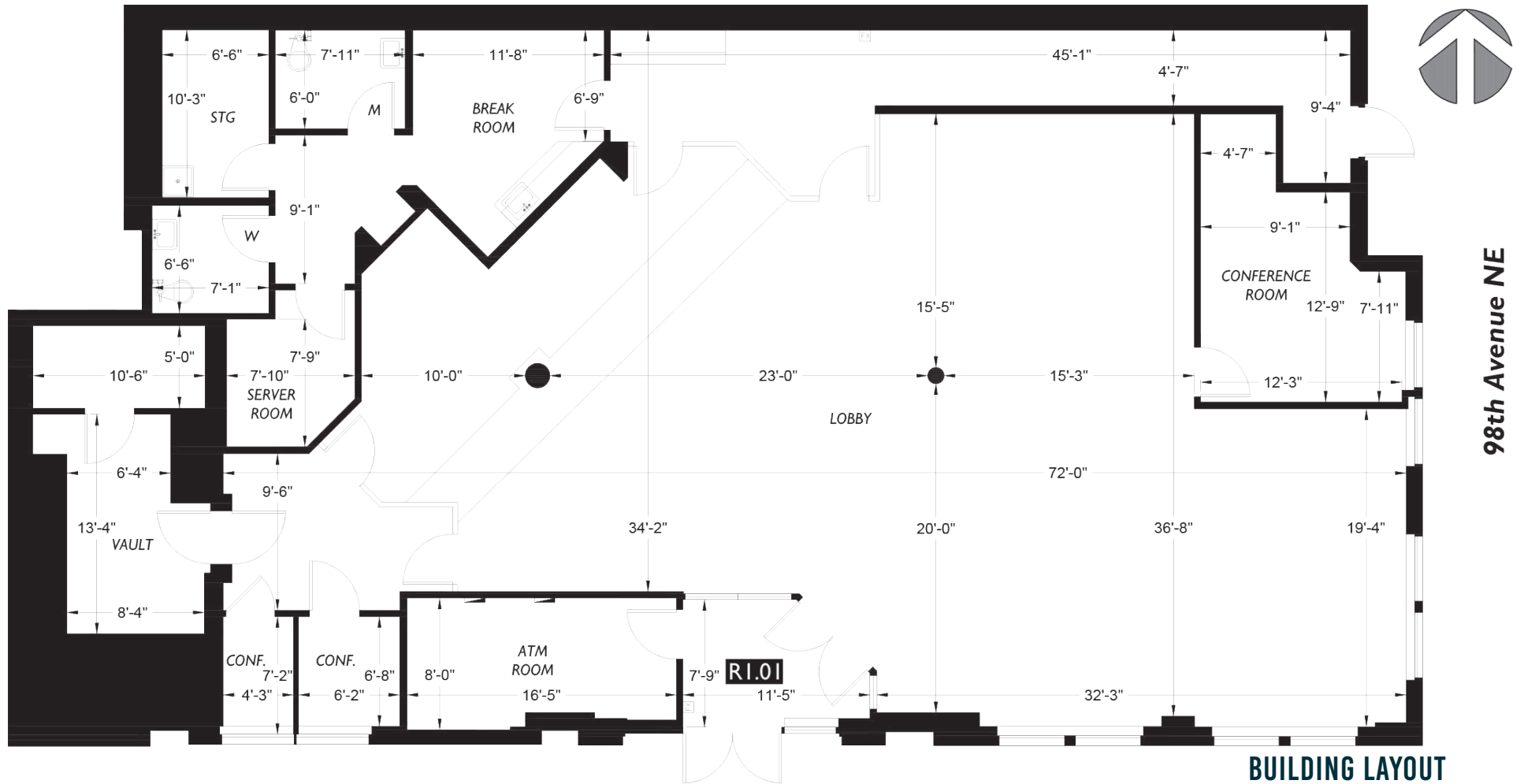
AVAILABLE UNIT LOCATION



R1.01 - 3,739 SF

HIGHLY WALKABLE | EASILY ACCESSIBLE | CHARMING WATERFRONT COMMUNITY | URBAN AMENITIES

AVAILABLE UNIT PLAN



98th Avenue NE

BUILDING LAYOUT



A HIGHLY DESIRABLE LOCATION



HIGHLY WALKABLE | EASILY ACCESSIBLE | CHARMING WATERFRONT COMMUNITY | URBAN AMENITIES

A HIGHLY DESIRABLE LOCATION



AFFLUENT SUBURB OF KIRKLAND | SURROUNDED BY DENSE RESIDENTIAL | POPULAR BEACH DESTINATION

JOIN OUR COMMUNITY



EAST LAKE WASHINGTON | WELL-CONNECTED | VIBRANT AND AFFLUENT

GET IN TOUCH

CONTACT INFORMATION

JAKE THURBER

425.250.3277

jthurber@fwp-inc.com

THOMAS HARSH

425.466.1022

tharsh@fwp-inc.com



PROUDLY OWNED BY

GROSVENOR



First Western Properties, Inc. | 425.822.5522

11621 97th Lane NE Kirkland, WA 98034 | fwp-inc.com

KIRKLAND | TACOMA | PORTLAND | SEATTLE

© First Western Properties, Inc. DISCLAIMER: The above information has been secured from sources believed to be reliable, however, no representations are made to its accuracy. Prospective tenants or buyers should consult their professional advisors and conduct their own independent investigation. Properties are subject to change in price and/or availability without notice.

