



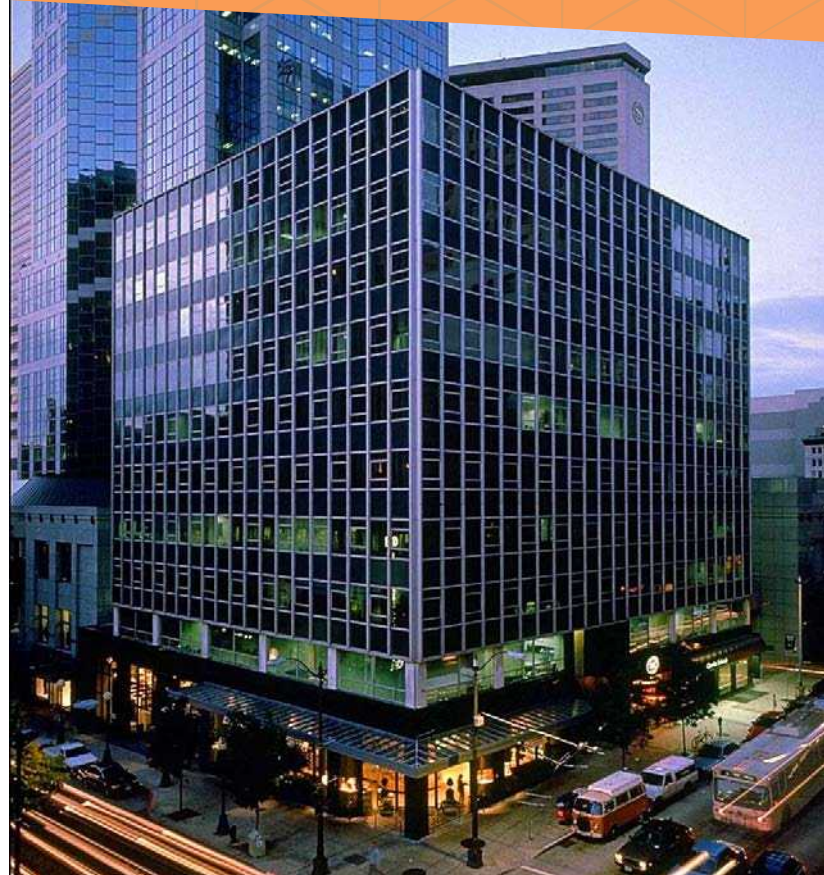
# Logan Building

500 UNION STREET • SEATTLE, WA

BRODERICK  
• GROUP •



# Building Facts



## The Facts

The Building 10-story office building totaling approx. 128,998 SF

Year Built 1959

RBA 128,998 SF

Building Features

- The completed lobby renovation helps to create a modern feel for tenants and their guests
- [Conference center](#) to help create a great work environment for your business
- Recently renovated common areas include a [building bike storage and shower facility](#)

Internet Providers Integra, CenturyLink, Comcast, TW Telecom & Global Capacity/Megapath

Rental Rates \$38.00/RSF, Gross

Ownership/Property Management Unico Properties



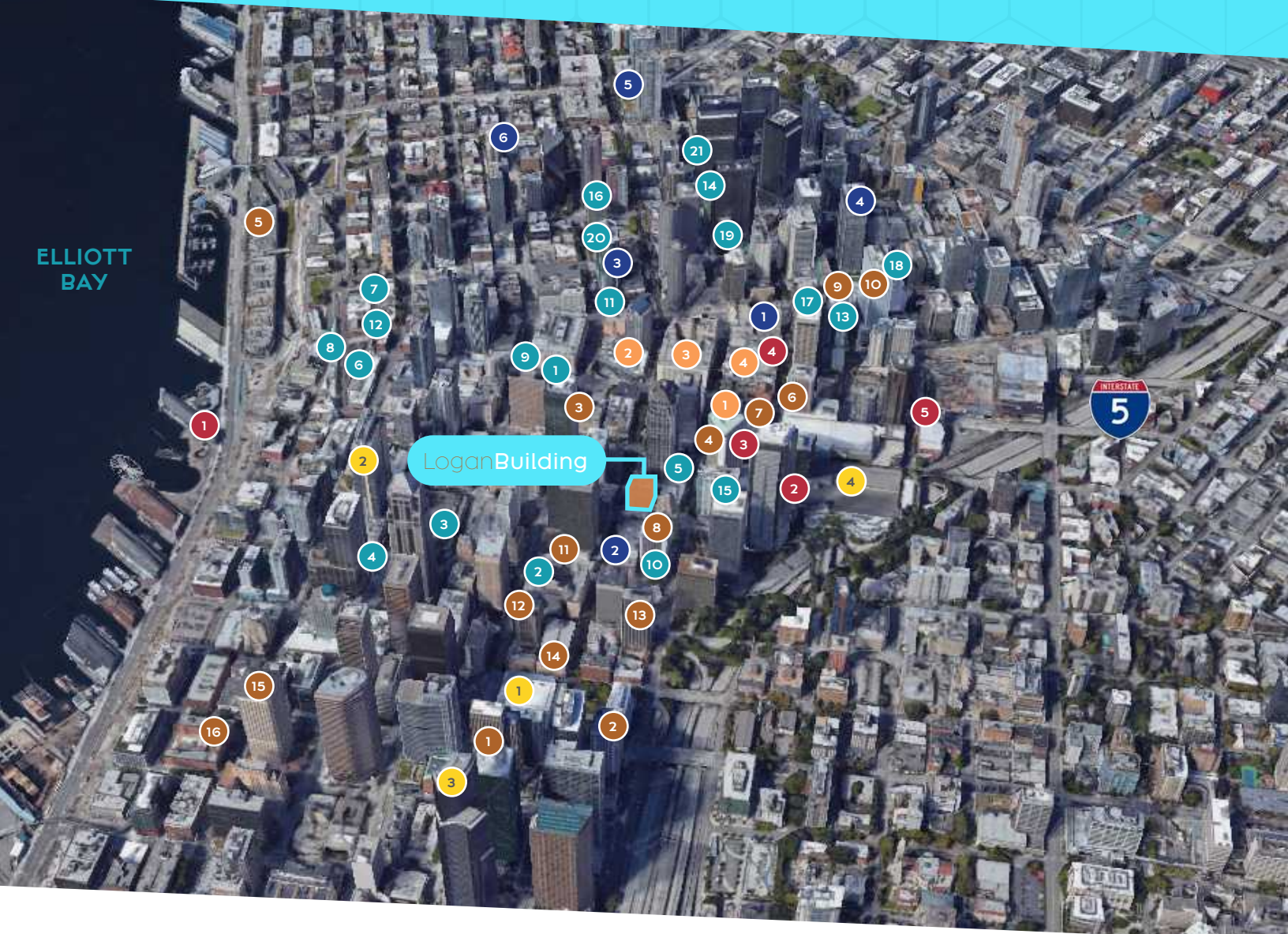
For more information or to schedule a tour, please contact:

[DAMON MCCARTNEY](#) | 206.838.7633 | [mccartney@broderickgroup.com](mailto:mccartney@broderickgroup.com)  
[LAUREN HALLGRIMSON](#) | 206.948.4440 | [hallgrimson@broderickgroup.com](mailto:hallgrimson@broderickgroup.com)

The information contained herein has been given to us by the owner or sources that we deem reliable. We have no reason to doubt its accuracy, but we do not guarantee it. Prospective tenants should carefully verify all information contained herein.

# Area Amenities

ELLIOTT BAY



## Retail

1. Nike Seattle
2. Westlake Center
3. Nordstrom
4. Pacific Place

## Restaurants

1. Bourbon Steak Seattle
2. Shuckers Restaurant
3. The Capital Grille
4. Wild Ginger
5. Blue Water Taco Grill
6. Il Bistro
7. The Pink Door
8. Lowell's Restaurant
9. Yard House
10. Redtrees Restaurant & Bar

## Hotels

1. Andaluca Restaurant
2. Cafe Champagne
3. Daniel's Broiler Downtown
4. Skillet Regrade
5. Cortina
6. Margaux
7. Tidal+
8. Andare Kitchen & Bar
9. Cinque Terra Ristorante
10. Lola
11. 2120

## Hotels

1. Lotte Hotel Seattle
2. Renaissance Hotel
3. Motif Seattle
4. Sheraton Grand Seattle
5. Seattle Marriott Waterfront

## Fitness

1. Grand Hyatt Seattle
2. Hotel Theodore
3. Hilton Seattle
4. Hyatt at Olive 8
5. Hyatt Recency Seattle
6. Fairmont Olympic
7. W Seattle
8. Crowne Plaza Seattle-Downtown
9. Kimpton Hotel Monaco Seattle
10. Hotel 1000
11. The Alexis Royal Sonesta Hotel Seattle

## Fitness

1. ZUM Fitness
2. Washington Athletic Club
3. RowdyBox

## Fitness

4. Pandora Fitness
5. Orangetheory Fitness
6. Elliott Bay Community Fitness

## Entertainment

1. Seattle Aquarium
2. ACT Theater
3. Regal Meridian & 4DX
4. AMC Theaters
5. Paramount Theatre

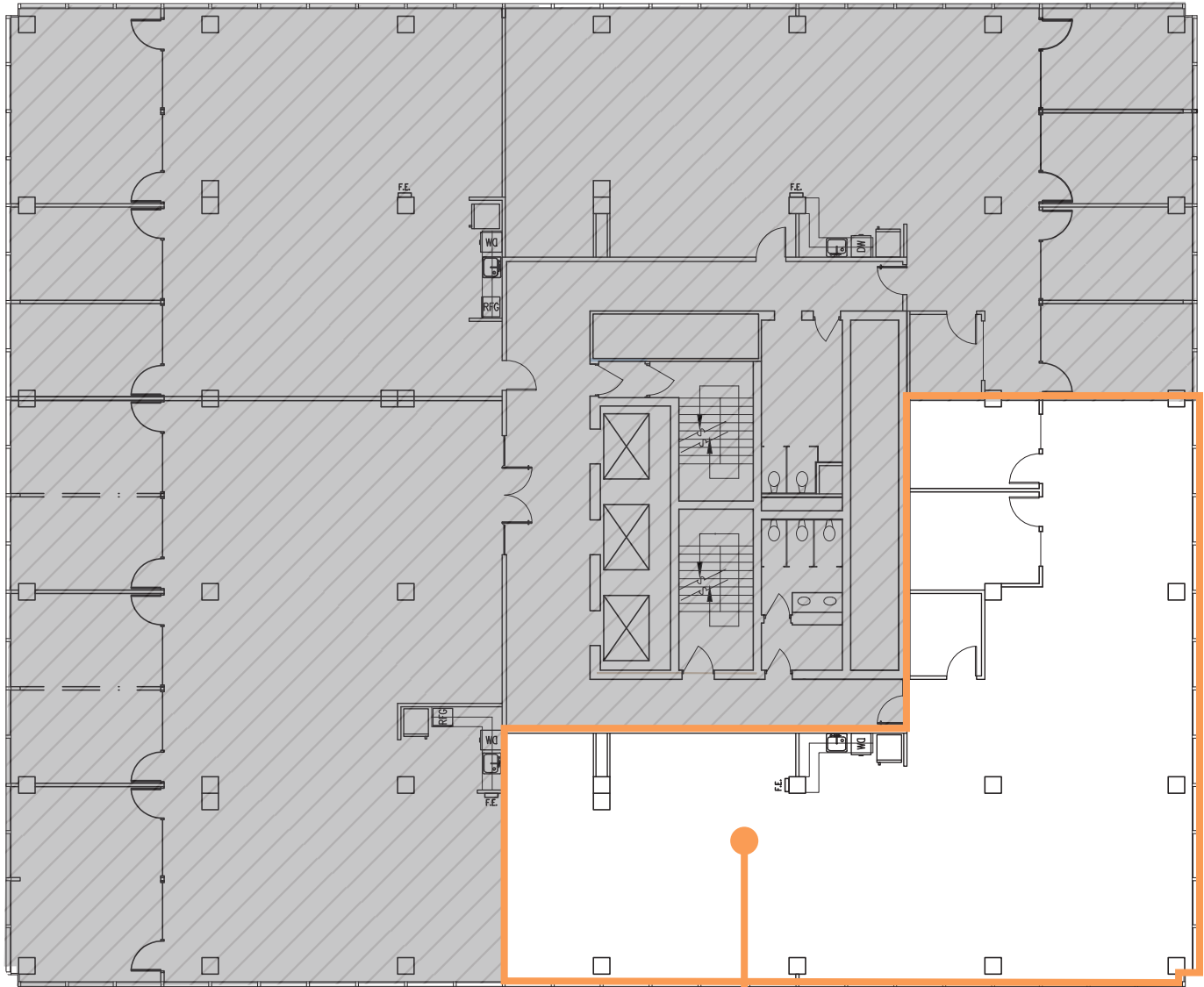
## Landmarks

1. Seattle Public Library
2. Seattle Art Museum
3. Sky View Observatory
4. Seattle Convention Center

# Available Space



	Floor / Suite	RSF	Available Date	Comments
▶	<a href="#">3 / 325</a>	3,415	Now	Rent ready. Kitchenette and private offices. Fully furnished
	<a href="#">4 / 400</a>	1,224	Now	Three private offices and kitchen
	<a href="#">4 / 407</a>	525	Now	Private office
▶	<a href="#">4 / 435</a>	1,421	Now	Conference rooms, private offices, reception and kitchenette
	<a href="#">5 / 503</a>	637	Now	Can be combined with Suite 510 for 2,245 RSF
	<a href="#">5 / 510</a>	1,608	Now	Can be combined with Suite 503 for 2,245 RSF
	<a href="#">5 / 520</a>	6,519	Now	Interior conference rooms and private offices
▶	<a href="#">6 / 620</a>	2,629	Now	Northwest corner suite, conference rooms, reception and kitchenette
	<a href="#">6 / 710</a>	2,472	1/1/2025	Rent ready. Open work area, conference room, private offices, kitchenette
▶	<a href="#">8 / 801</a>	3,139	Now	Private offices
	<a href="#">8 / 805</a>	891	30 days' notice	Private office and kitchenette
	<a href="#">8 / 810</a>	943	Now	Three offices and kitchen
▶	<a href="#">9 / 940</a>	2,908	Now	Private offices, conference room, open work areas and kitchenette
	<a href="#">9 / 950</a>	3,745	Now	Rent ready. Private offices, open work area, kitchenette and conference room



## Suite 325

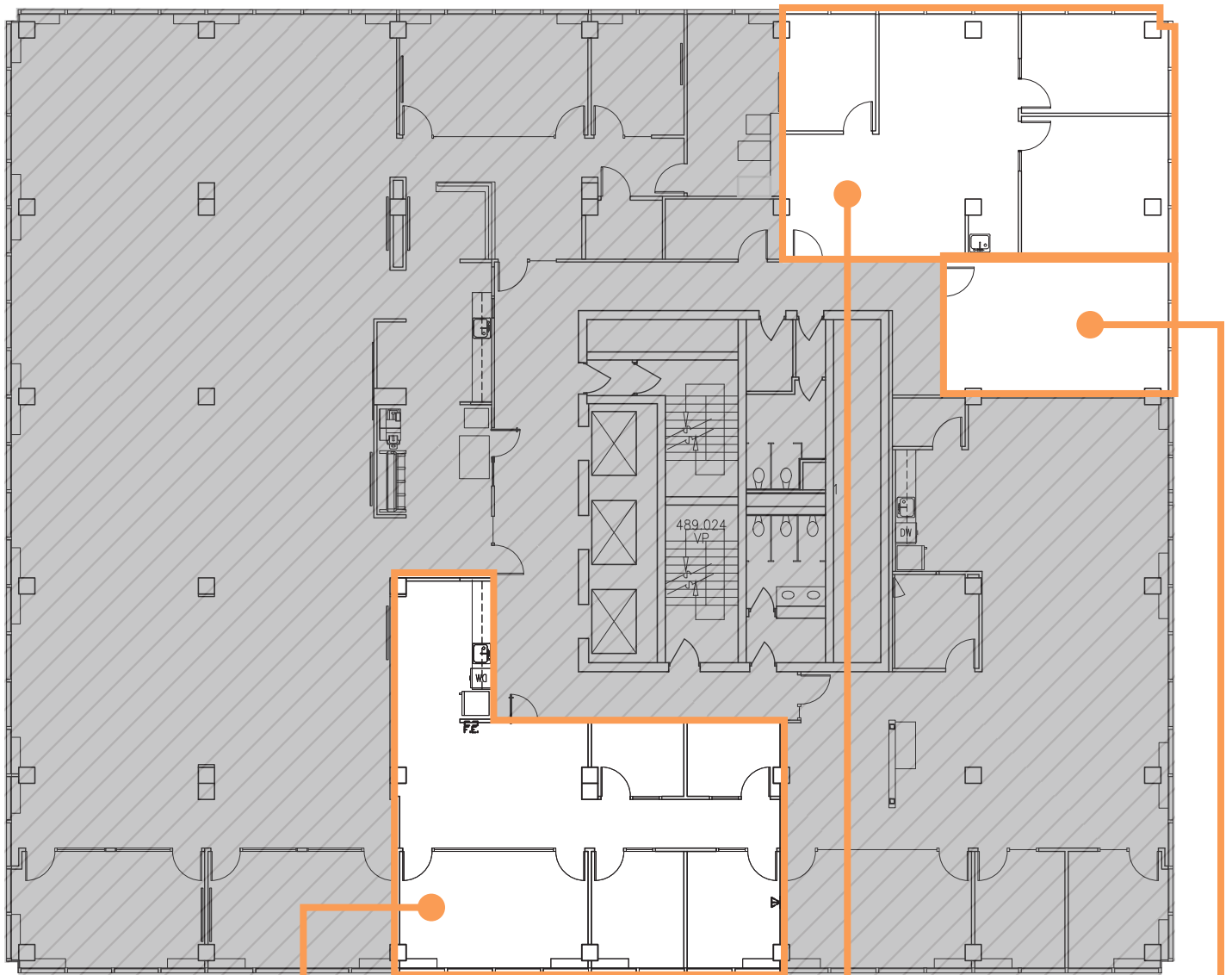
3,415 RSF

[VIEW VIRTUAL TOUR](#)

- Rent ready
- Kitchenette
- Private offices
- Fully furnished
- Available now



[Back to Available Space](#)



## Suite 435

1,421 RSF

[VIEW VIRTUAL TOUR](#)

- Conference room
- Kitchenette
- Private offices
- Available now

## Suite 400

1,224 RSF

- Three private offices
- Kitchen
- Available now

## Suite 407

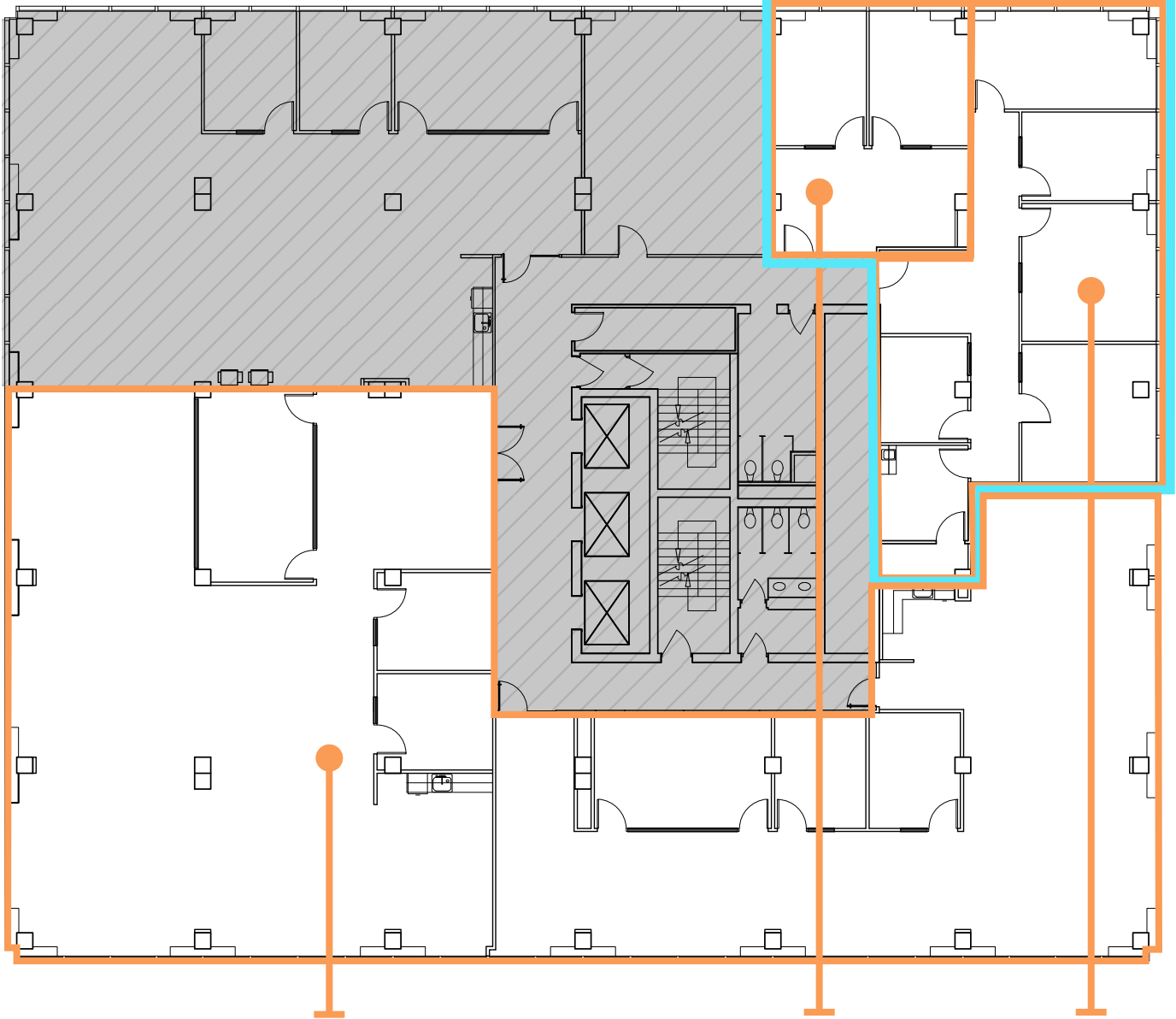
525 RSF

- Private office
- Available now



[Back to Available Space](#)

Suites 503, & 510 can be combined for a total of **2,245 RSF**



## Suite 520

**6,519 RSF**

- Available now

## Suite 503 Suite 510

**637 RSF**

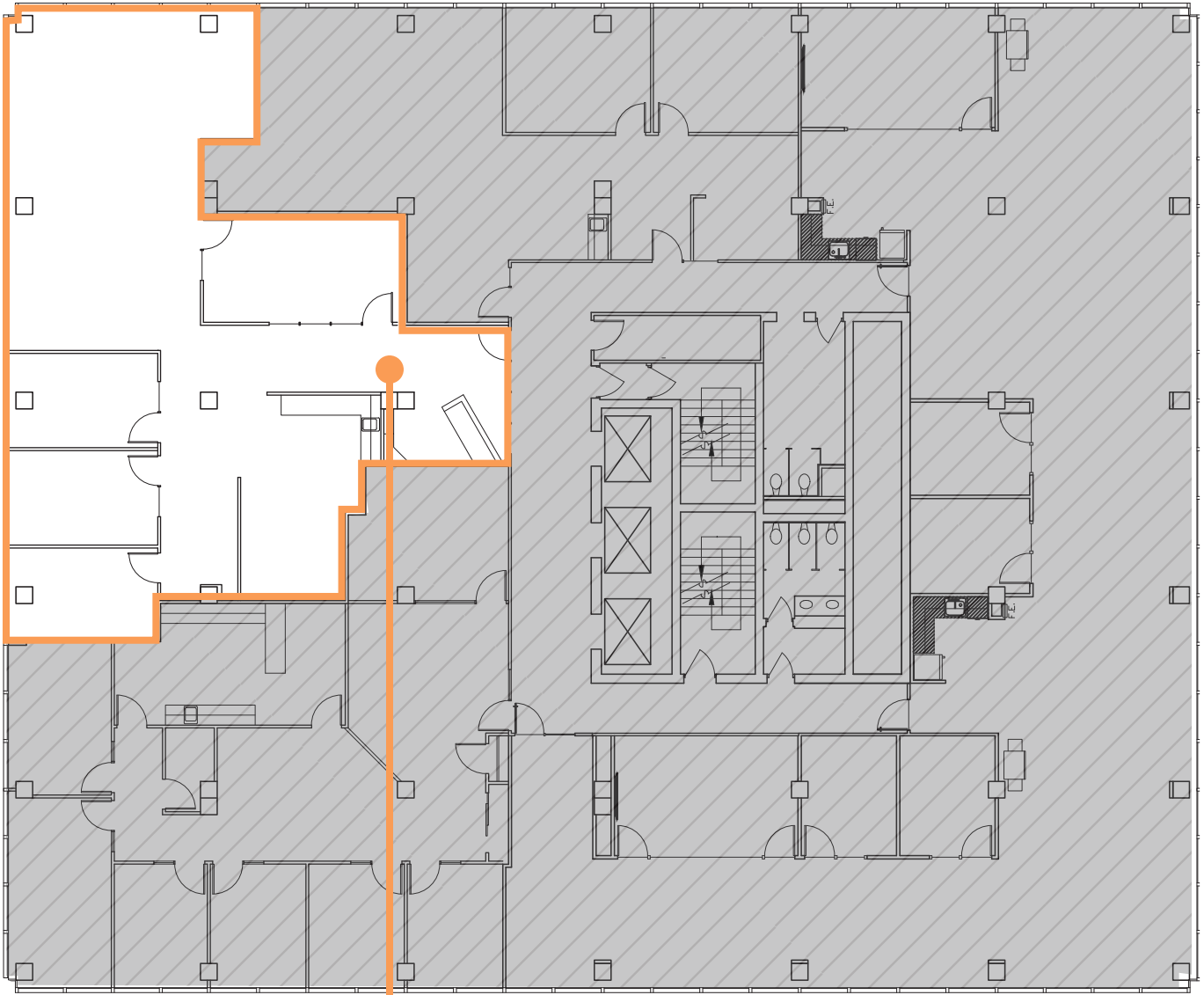
- Available now

**1,608 RSF**

- Available now



[Back to Available Space](#)



## Suite 620

2,629 RSF

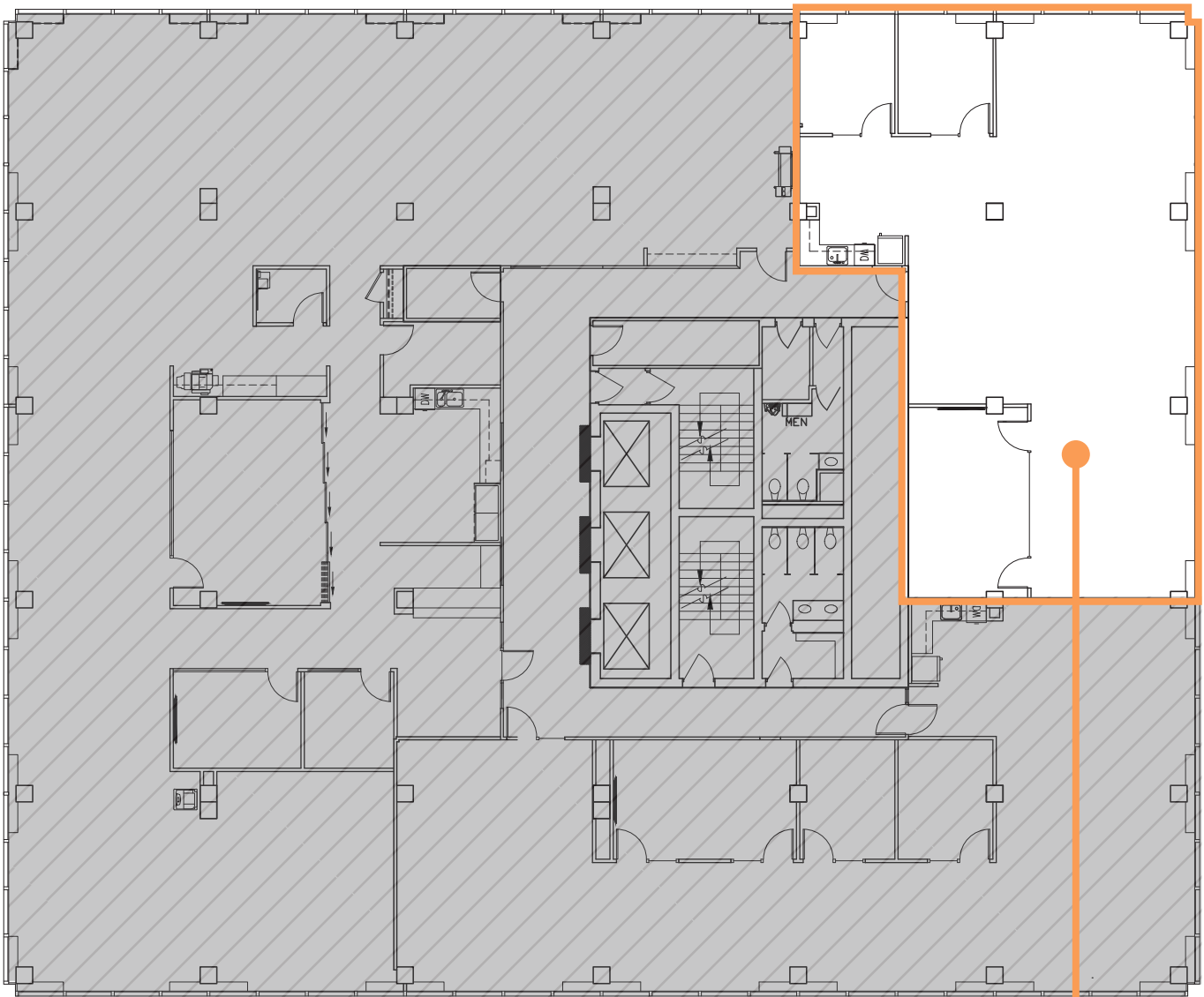
[VIEW VIRTUAL TOUR](#)

- Northwest corner suite
- Conference rooms
- Kitchenette
- Private offices
- Reception
- Available now



[Back to Available Space](#)





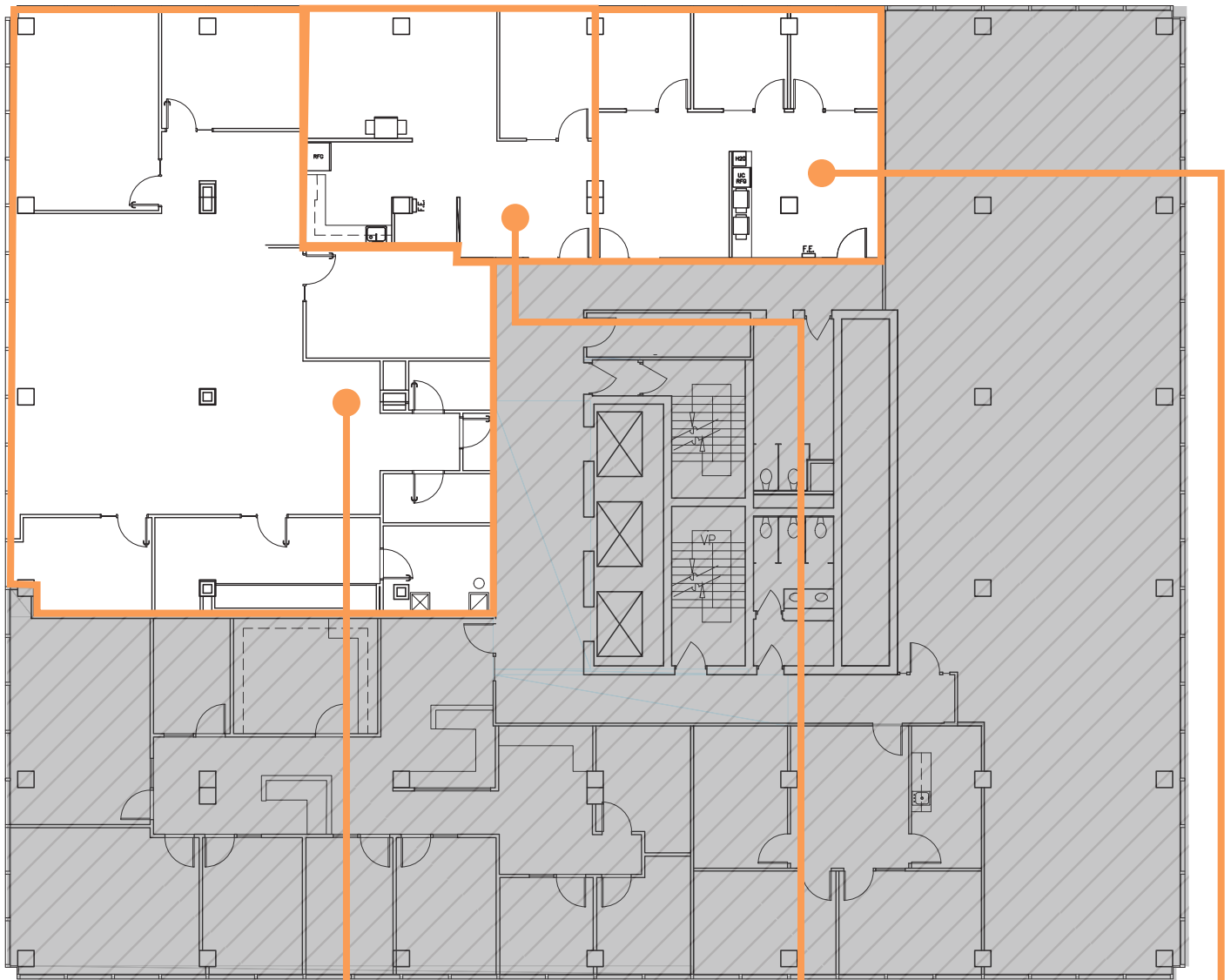
## Suite 710

2,472 RSF

- Rent ready
- Open work area
- Conference room
- Private offices
- Kitchenette
- Available 1/1/2025



[Back to Available Space](#)



## Suite 801

3,139 RSF

[VIEW VIRTUAL TOUR](#)

- Private offices
- Available now

## Suite 805

891 RSF

- Private office
- Kitchenette
- Available with 30 days' notice

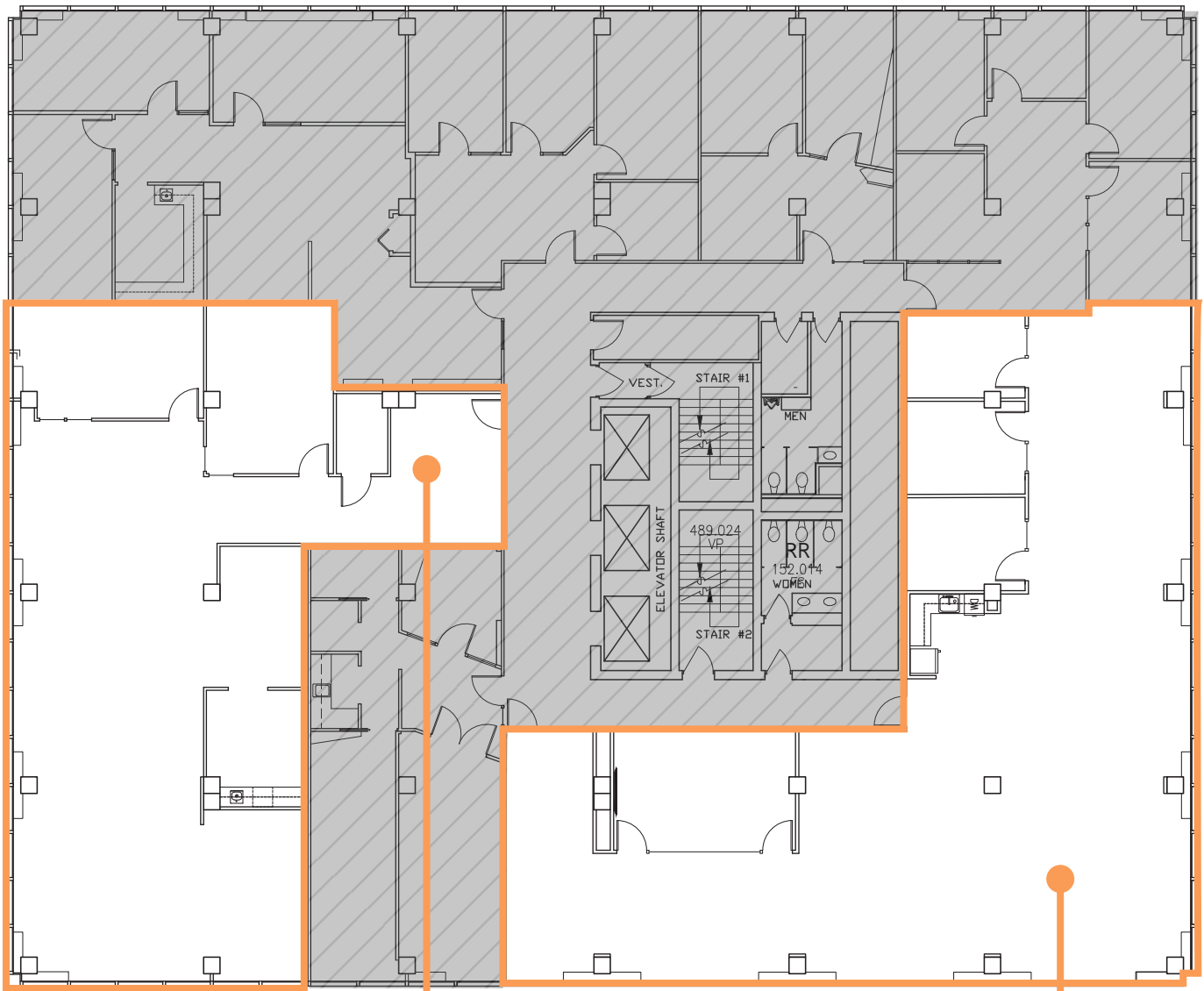
## Suite 810

943 RSF

- Three offices
- Kitchen
- Available now



[Back to Available Space](#)



## Suite 940

2,908 RSF

[VIEW VIRTUAL TOUR](#)

- Private offices
- Open work area
- Kitchenette
- Conference room
- Available now

## Suite 950

3,745 RSF

- Rent ready
- Private offices
- Open work area
- Kitchenette
- Conference room
- Available now



[Back to Available Space](#)



# Logan Building

500 UNION STREET • SEATTLE, WA



DAMON MCCARTNEY

206.838.7633

[mccartney@broderickgroup.com](mailto:mccartney@broderickgroup.com)

LAUREN HALLGRIMSON

206.948.4440

[hallgrimson@broderickgroup.com](mailto:hallgrimson@broderickgroup.com)