

FOR LEASE

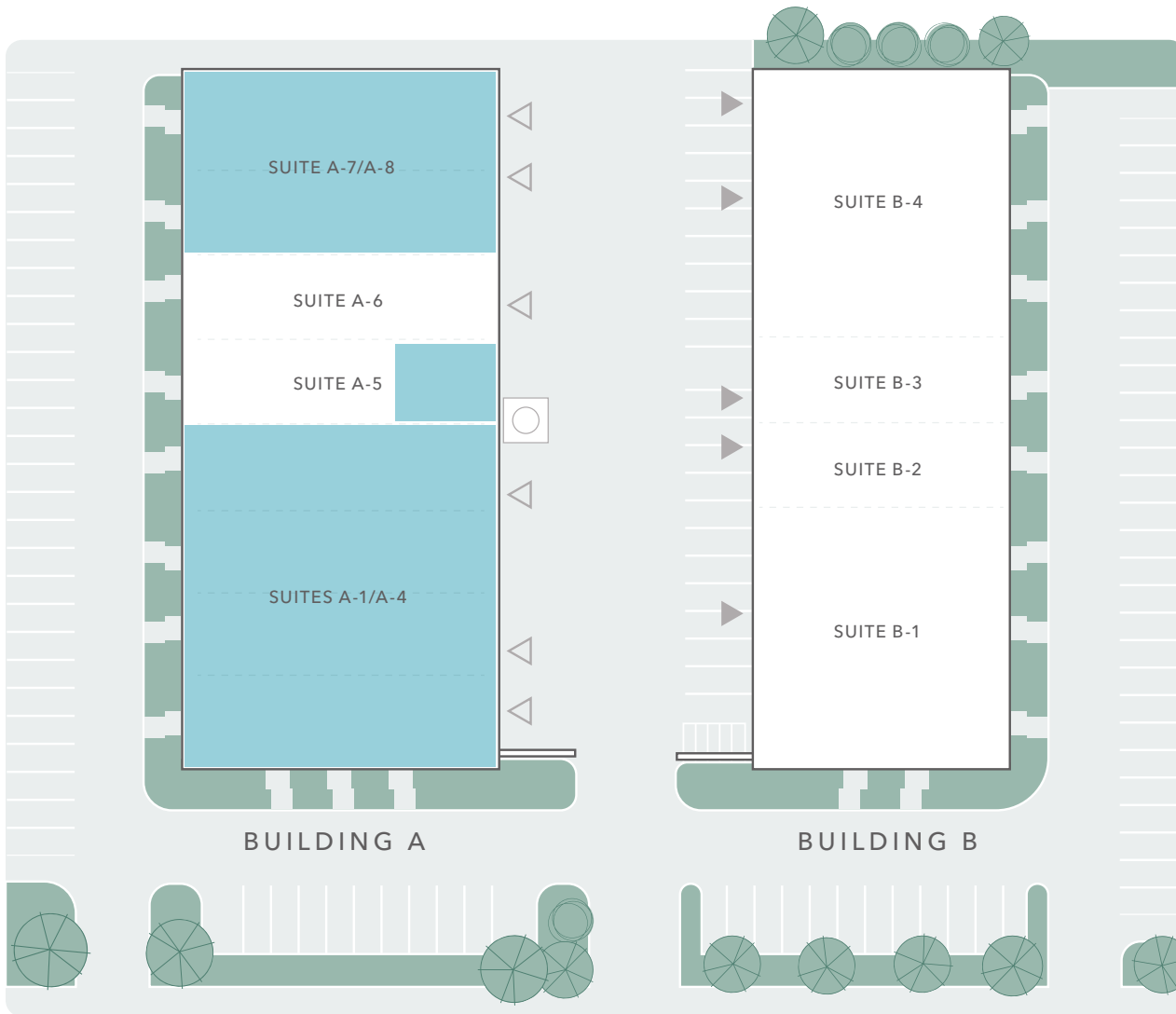
GALT CENTER

*Office / Warehouse Suites
Available For Lease*

917 134TH ST SW | EVERETT, WA



AVAILABILITIES OVERVIEW



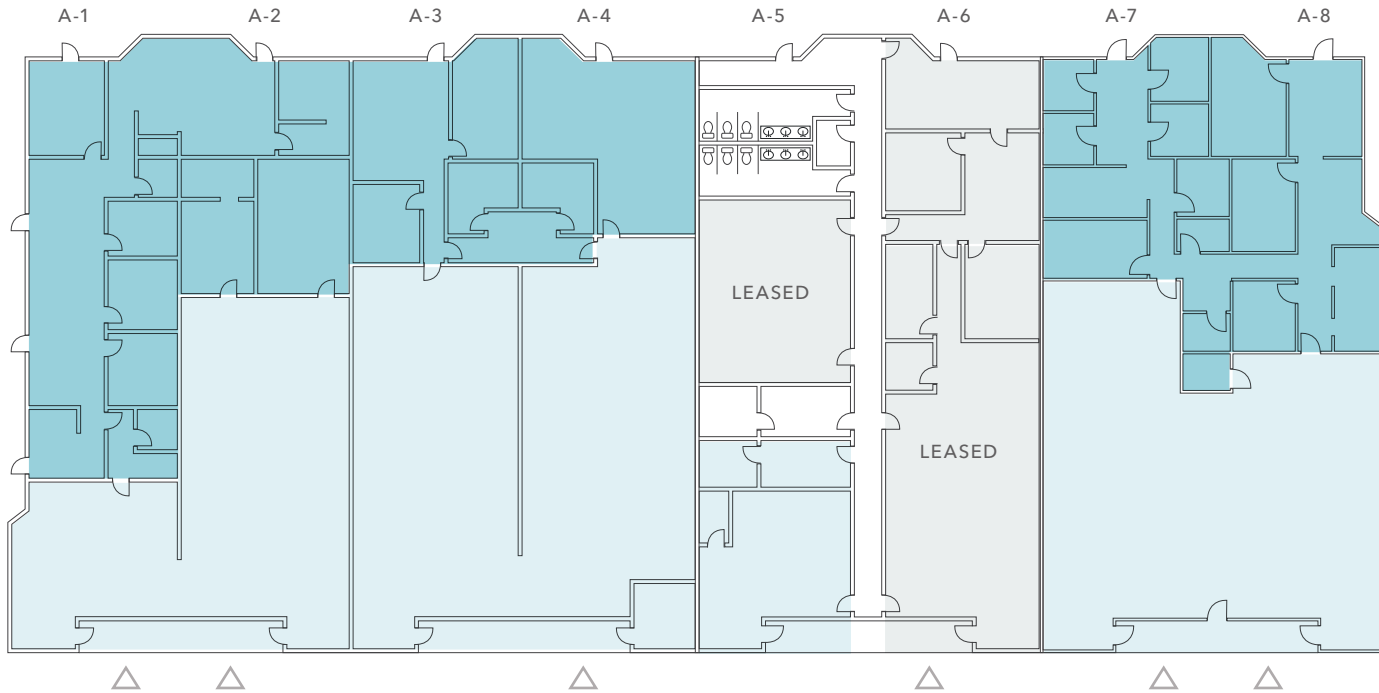
BLDG A	Office	Warehouse	Total
SUITE A-1/A-4	3,757 SF	6,977 SF	10,734 SF
SUITE A-5	0 SF	600 SF	600 SF
SUITE A-7/A-8	2,475 SF	3,025 SF	5,500 SF
SUITES A-1 to A-8	6,232 SF	10,602 SF	16,834 SF

LEGEND

- Available for Direct Lease
- Dock-High Loading
- Grade-Level Loading



BUILDING A



16,834 SF

AVAILABLE

6,232 SF

OFFICE

10,602 SF

WAREHOUSE



LEGEND

Office

Warehouse

△ Dock-High Loading

PROPERTY DETAILS

10'-16' clear height

Climate-controlled warehouse

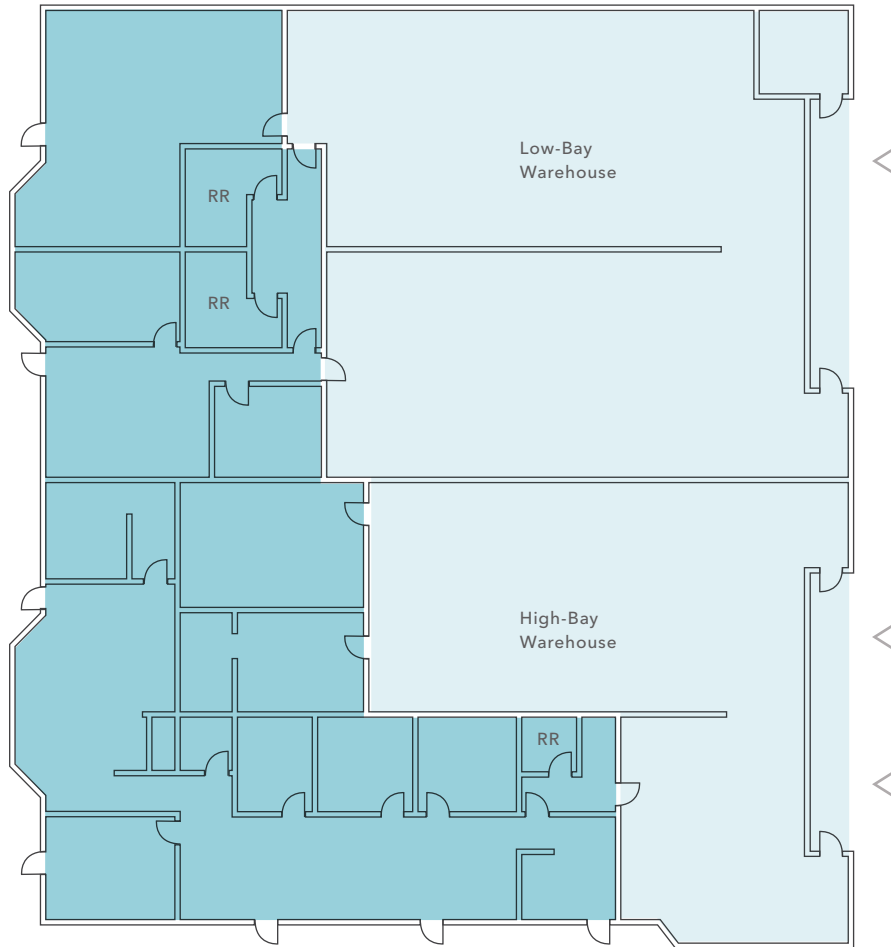
\$2.10/SF office rate

\$1.10/SF warehouse rate

\$0.44/SF NNN rate

Available now

SUITES A-1/A-4



LEGEND

- Office
- Warehouse
- Dock-High Loading

10,734 SF

AVAILABLE

3,757 SF

OFFICE

6,977 SF

WAREHOUSE

PROPERTY DETAILS

10'-16' clear height

3 Dock-high loading doors

Climate-controlled warehouse

\$2.10/SF office rate

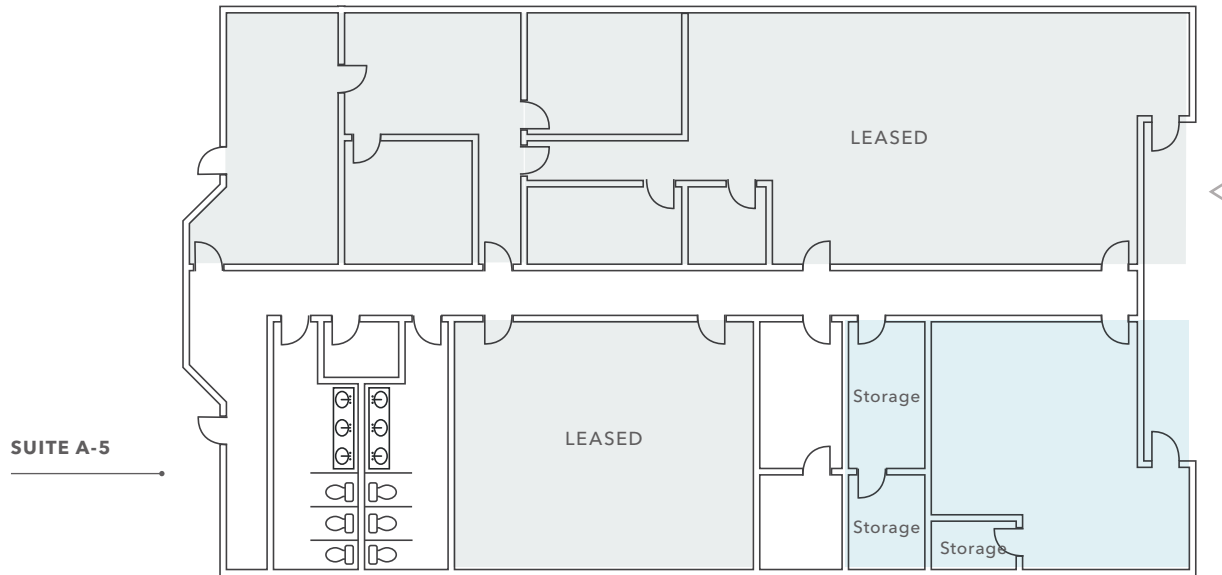
\$1.10/SF warehouse rate

\$0.44/SF NNN rate

Can be split as A-1/A-2 & A-3/A-4

Available now

SUITE A-5



600 SF

AVAILABLE

0 SF

OFFICE

600 SF

WAREHOUSE



LEGEND

■ Office

■ Warehouse

△ Dock-High Loading

PROPERTY DETAILS

Current clear height 10'-13'

Potential clear height 16'

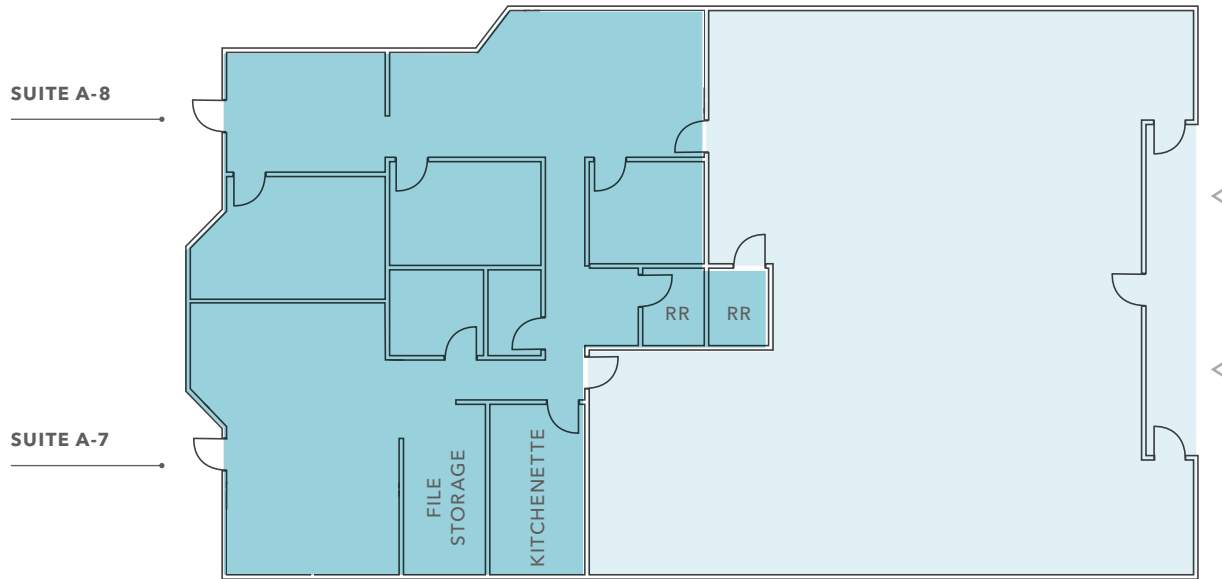
Dock-high roll-up door

\$1.10/SF warehouse rate

\$0.44/SF NNN rate

Available now

SUITES A-7/A-8



LEGEND

- Office
- Warehouse
- △ Dock-High Loading

5,500 SF

AVAILABLE

2,475 SF

OFFICE

3,025 SF

WAREHOUSE

PROPERTY DETAILS

Clear height 16'

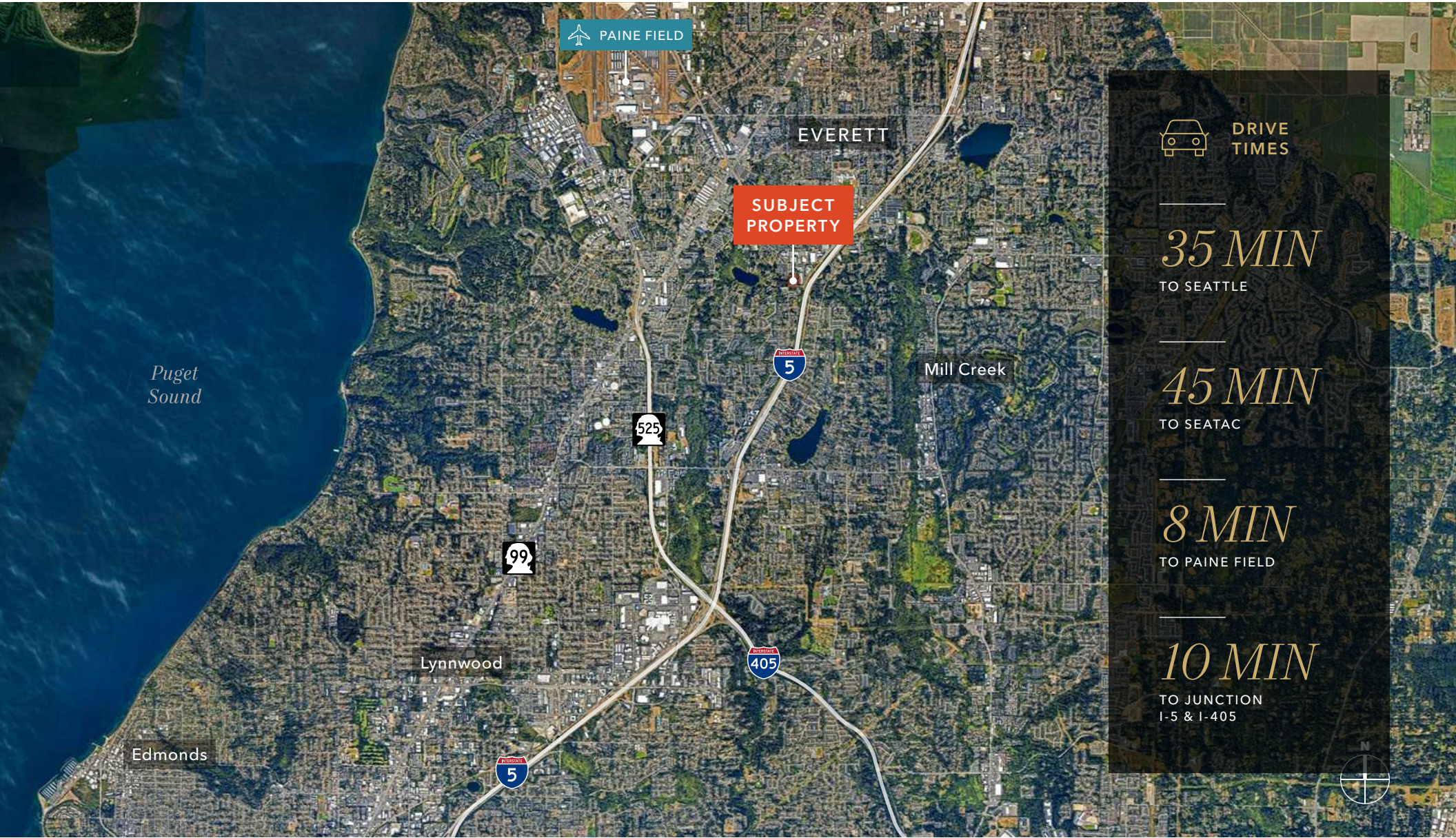
2 dock-high roll-up door

\$2.10/SF office rate

\$1.10/SF warehouse rate

\$0.44/SF NNN rate

Available now



PAINE FIELD

EVERETT

SUBJECT PROPERTY

5

Mill Creek

525

99

Lynnwood

405

Edmonds



DRIVE TIMES

35 MIN

TO SEATTLE

45 MIN

TO SEATAC

8 MIN

TO PAINE FIELD

10 MIN

TO JUNCTION
I-5 & I-405





Exclusively listed by

TODD GAUTHIER

Executive Vice President

425.450.1118

todd.gauthier@kidder.com

JASON BLOOM

Executive Vice President

425.450.1102

jason.bloom@kidder.com

JACK ALBRECHT

Associate Vice President

425.450.1114

jack.albrecht@kidder.com

KIDDER.COM