

# Baker View Logistics Center

1215 80th Street SW, Everett, Washington



166,590 SF Distribution Center

Available Now



Developed by **SMARTCAP**



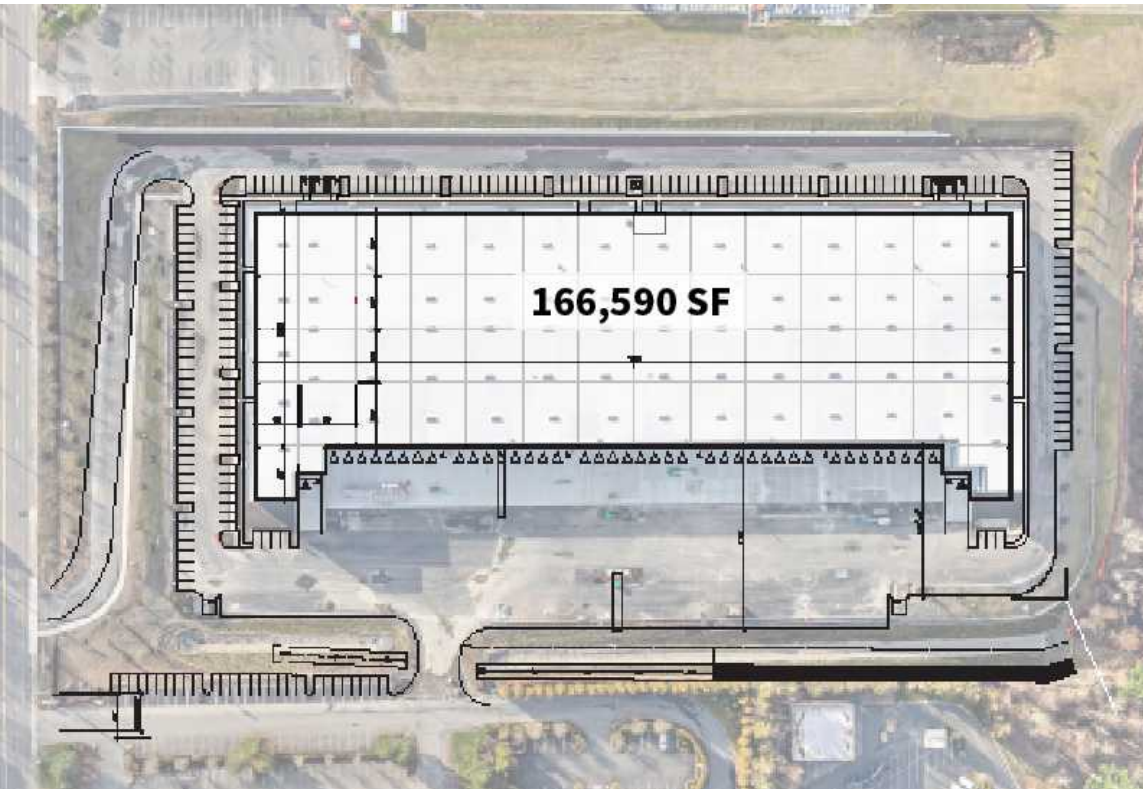
COMMERCIAL REAL ESTATE SERVICES  
NORTHWEST LOGISTICS ADVISORS

**Chris Peterson**  
SIOR, CCIM, Principal  
D 206.773.2578

**Richard Peterson**  
SIOR, CCIM, Principal  
D 206.773.2677

**Ryan Aleinikoff**  
Associate  
D 425.818.2654





- 3 **Class A Logistics Development**
- 3 **Available Now**
- 3 **Infrastructure in place to add EV charging stations and rooftop photovoltaic panels**
- 3 **Prime location in Everett's Seaway Industrial Center with proximity to ports, Paine Field, Interstate 5, and amenities.**

<b>Building Size</b>	166,590 RSF
<b>Clear height</b>	36'
<b>Construction</b>	Concrete tilt-up
<b>Slab Design</b>	6 ¾ reinforced with 4,500 psi compression
<b>Loading</b>	42 Dock-high doors. 2 grade level doors with 60' concrete apron
<b>Column Spacing</b>	54' x 50' standard, 60' speed bay
<b>Power</b>	2,000 Amps 408v 3 phase
<b>Roof System</b>	Steel decking with TPO
<b>Fire Suppression</b>	ESFR sprinkler system
<b>Trailer Parking</b>	Extra deep 170' loading court allows for trailer parking stalls
<b>Auto parking</b>	176 stalls



POSSESSION  
SOUND

EVERGREENWAY



We obtained the information above from sources we believe to be reliable. However, we have not verified its accuracy and make no guarantee, warranty or representation about it. It is submitted subject to the possibility of errors, omissions, change of price, rental or other conditions, prior sale, lease or financing, or withdrawal without notice. We include projections, opinions, assumptions or estimates for example only, and they may not represent current or future performance of the property. You and your tax and legal advisors should conduct your own investigation of the property and transaction.

## CONTACT

**Chris Peterson**  
SIOR, CCIM, Principal  
D 206.773.2578

**Richard Peterson**  
SIOR, CCIM, Principal  
D 206.773.2677

**Ryan Aleinikoff**  
Associate  
D 425.818.2654

 **LEE &  
ASSOCIATES**  
COMMERCIAL REAL ESTATE SERVICES

DEVELOPED BY:

 **SMARTCAP**