

FOR LEASE

COMMONS PROFESSIONAL CENTER

*Up to 5,653 RSF class-A medical space for lease
one block from Overlake Medical Center and
Kaiser Permanente*

1200 112TH AVE NE, BELLEVUE, WA

KIDDER.COM

 Kidder
Mathews

Property Features

Suite C-260 – 5,653 RSF (divisible), existing physical therapy build-out

Class-A, multi-tenant medical office building

No onerous practice type or use restrictions

Features an on-site pharmacy, deli, and property management services

Monument signage available

Fully sprinklered buildings

Free surface parking and covered parking stalls 4.5/1,000 SF (60% covered parking)

Located approximately one block from Overlake Hospital Medical Center and Kaiser Permanente

Join the existing diversified healthcare providers: Overlake, Optum, Dermatology, Surgery, Physical Therapy, and various dental providers

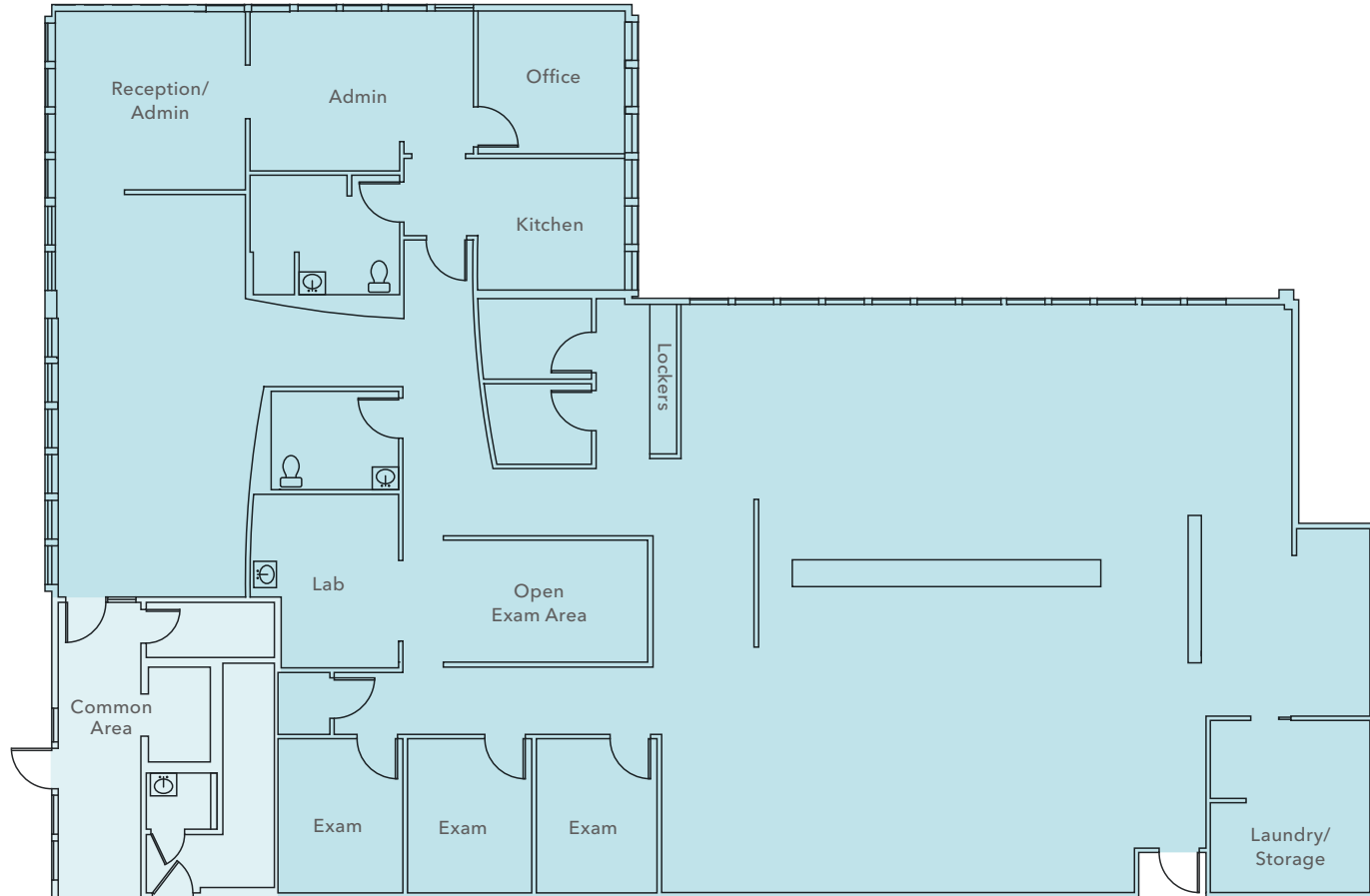
NOW
AVAILABLE

CLASS-A
MEDICAL OFFICE BUILDING



FLOOR PLAN

SUITE C-260



5,653 SF

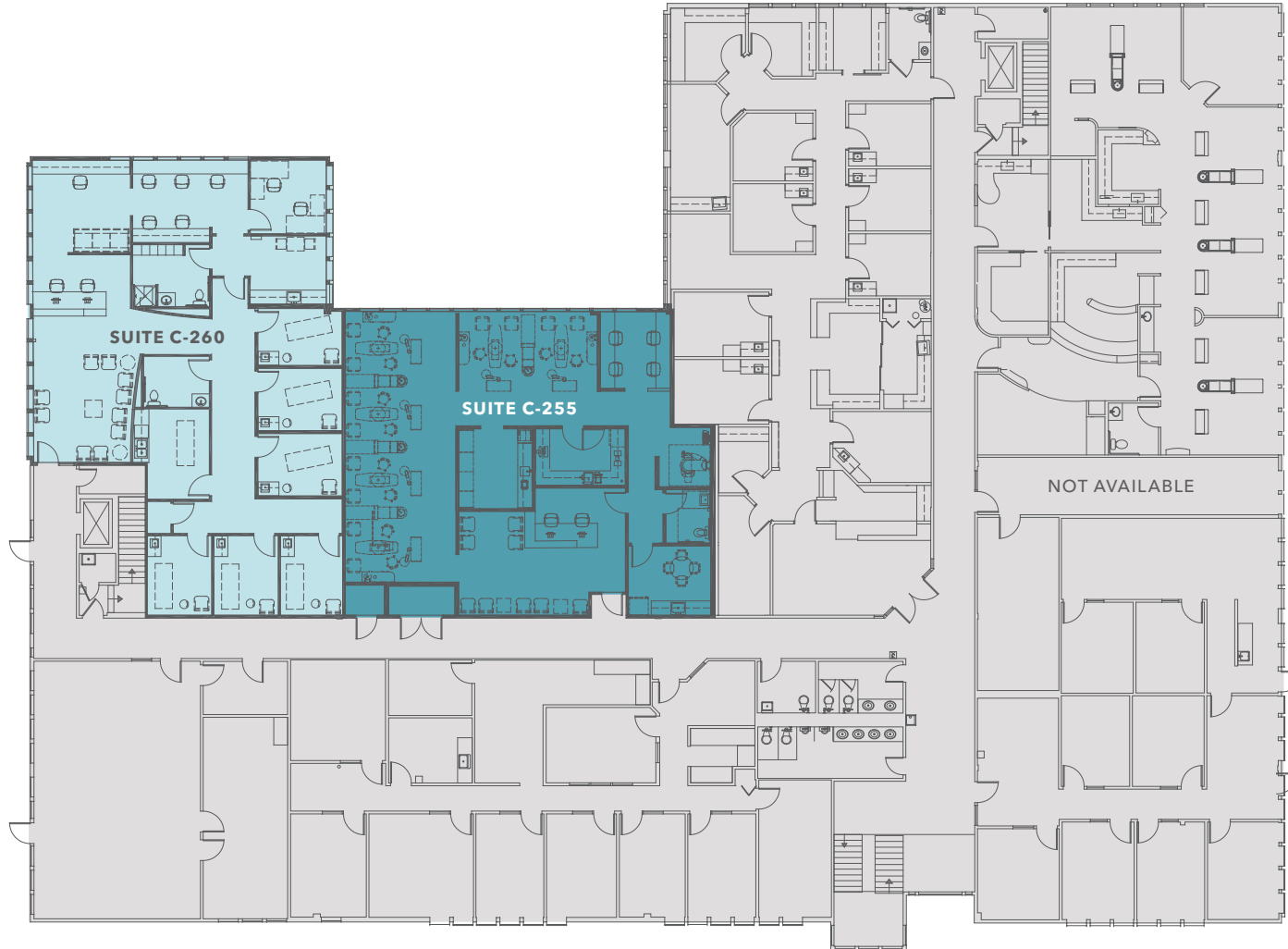
DEMISABLE

\$40.00

PSF, NNN

FLOOR PLAN

SPEC DEMISE PLAN



2,629 SF

SUITE C-255

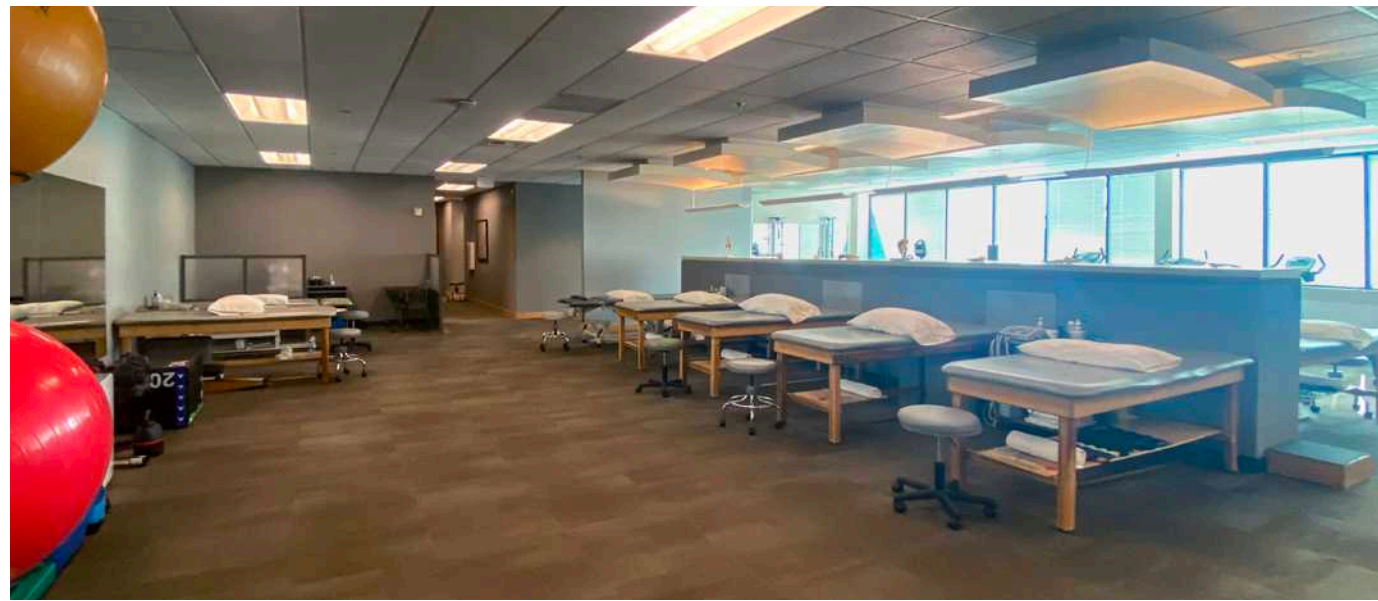
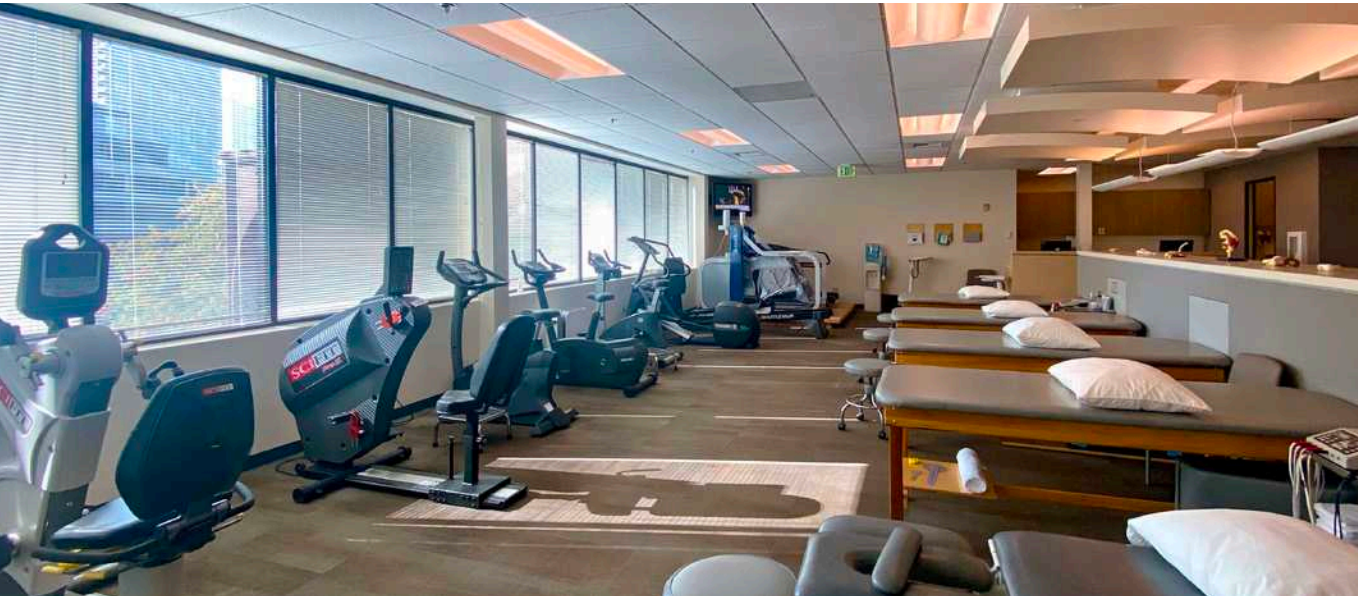
3,024 SF

SUITE C-260

5,653 SF

CONTIGUOUS

COMMONS PROFESSIONAL CENTER



COMMONS PROFESSIONAL CENTER

Owned and managed by

BLOCH
PROPERTIES

Exclusively leased by

TODD BATTISON
Senior Vice President
206.296.9621
todd.battison@kidder.com

ALEX ANDREA
Associate Vice President
425.450.1163
alex.andrea@kidder.com

KIDDER.COM

This information supplied herein is from sources we deem reliable. It is provided without any representation, warranty, or guarantee, expressed or implied as to its accuracy. Prospective Buyer or Tenant should conduct an independent investigation and verification of all matters deemed to be material, including, but not limited to, statements of income and expenses. Consult your attorney, accountant, or other professional advisor.

**km Kidder
Mathews**