



TUKWILA COMMERCE PARK

12606 INTERURBAN AVE S,
BLDG A, SUITE 156, TUKWILA, WA

FOR LEASE

5,050 SF

1,925 SF Office

12' Clear height

2 Drive-in doors

Ample parking

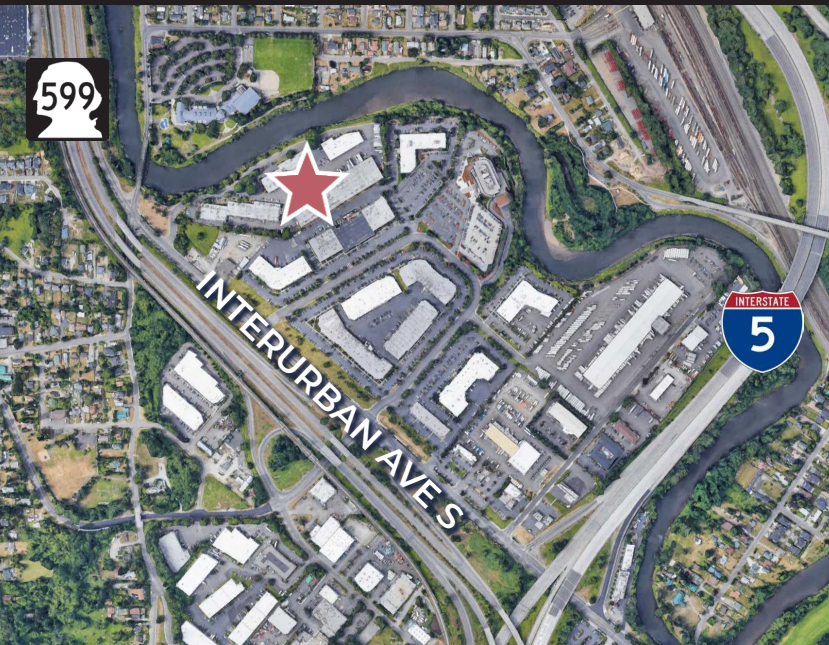
Available now

Call agent for rates

2024 Est. NNN \$0.358/SF

Excellent access to I-5 and SR-599

Adjacent to Tukwila Community Center
and Interurban Trail



MATT WOOD, SIOR

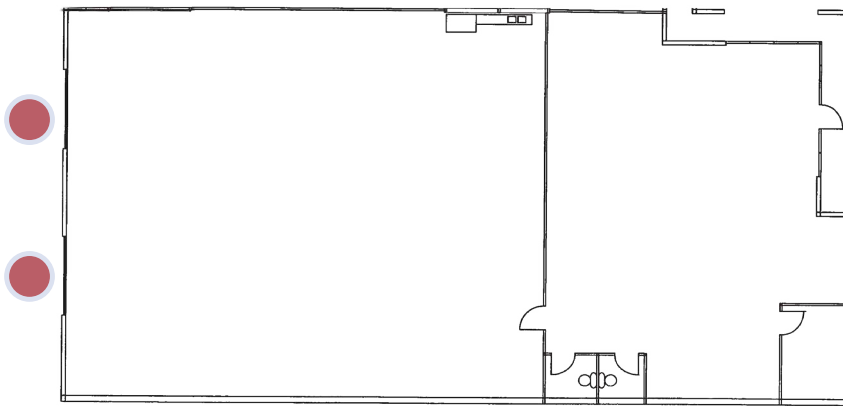
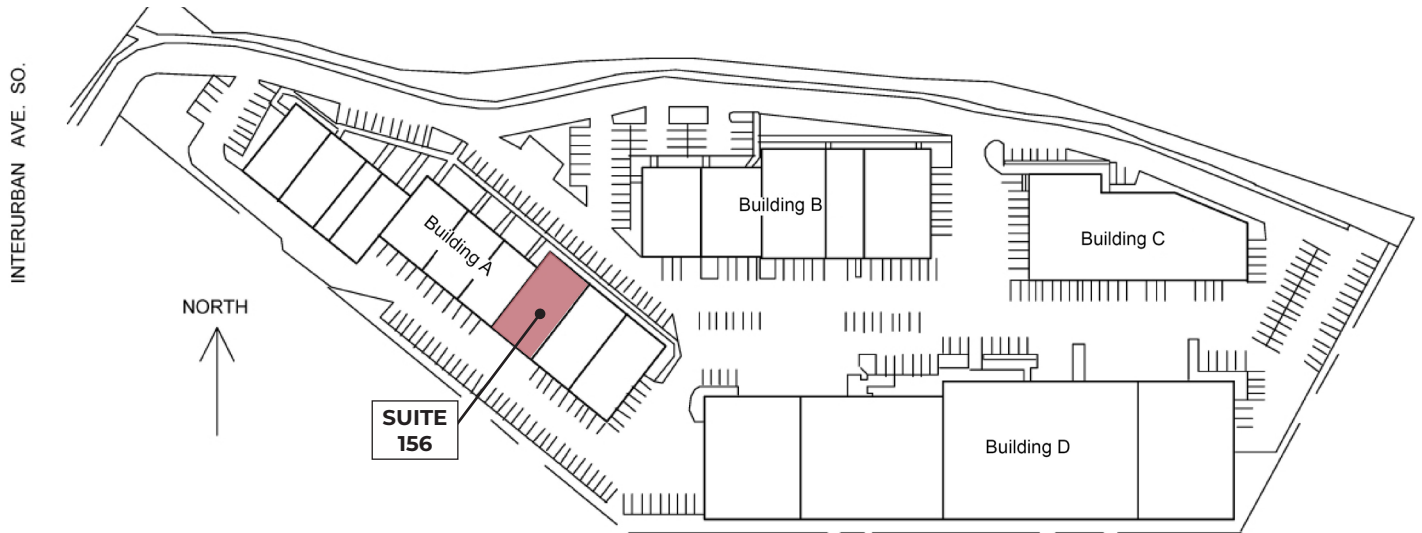
+1 206 595 6814

matt.wood@kbcadvisors.com

JOHN BROOM

+1 206 877 2750

john.broom@kbcadvisors.com



Space Information

- 5,050 SF Total
- 1,925 SF Office
- 12' Clear height
- 2 Drive-in doors
- Ample parking
- Available now



MATT WOOD, SIOR
+1 206 595 6814
matt.wood@kbcadvisors.com

JOHN BROOM
+1 206 877 2750
john.broom@kbcadvisors.com