

FOR LEASE

4660 Whitman Lane SE
Lacey, WA 98513



LACEY PLAZA

Carrie Walker

First Western Properties—Tacoma Inc. | 253.472.0404
6402 Tacoma Mall Blvd, Tacoma, WA 98409 | fwp-inc.com

4660 WHITMAN LANE SE

SUITE C: 2,975 SF BASE: \$23.00 + \$5.86 NNN

- Highly visible and easily accessible
- Located on Yelm Highway
- Positioned directly across from Lowe's
- Great signage opportunities



NEARBY TENANTS



STARBUCKS

SUMMARY



Population



Average HH Income



Daytime Population

Regis - 2024

Mile 1

13,621

\$109,010

5,839

Mile 3

67,109

\$126,936

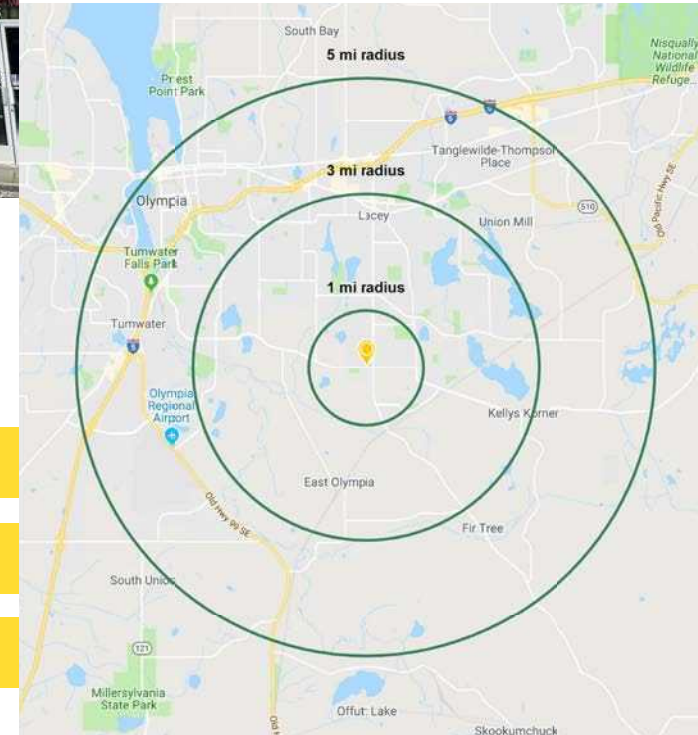
29,839

Mile 5

139,832

\$117,391

104,053





LOCATION DETAILS



INDIAN SUMMER
GOLF & COUNTRY CLUB

WILLIAM A. BUSH
PARK

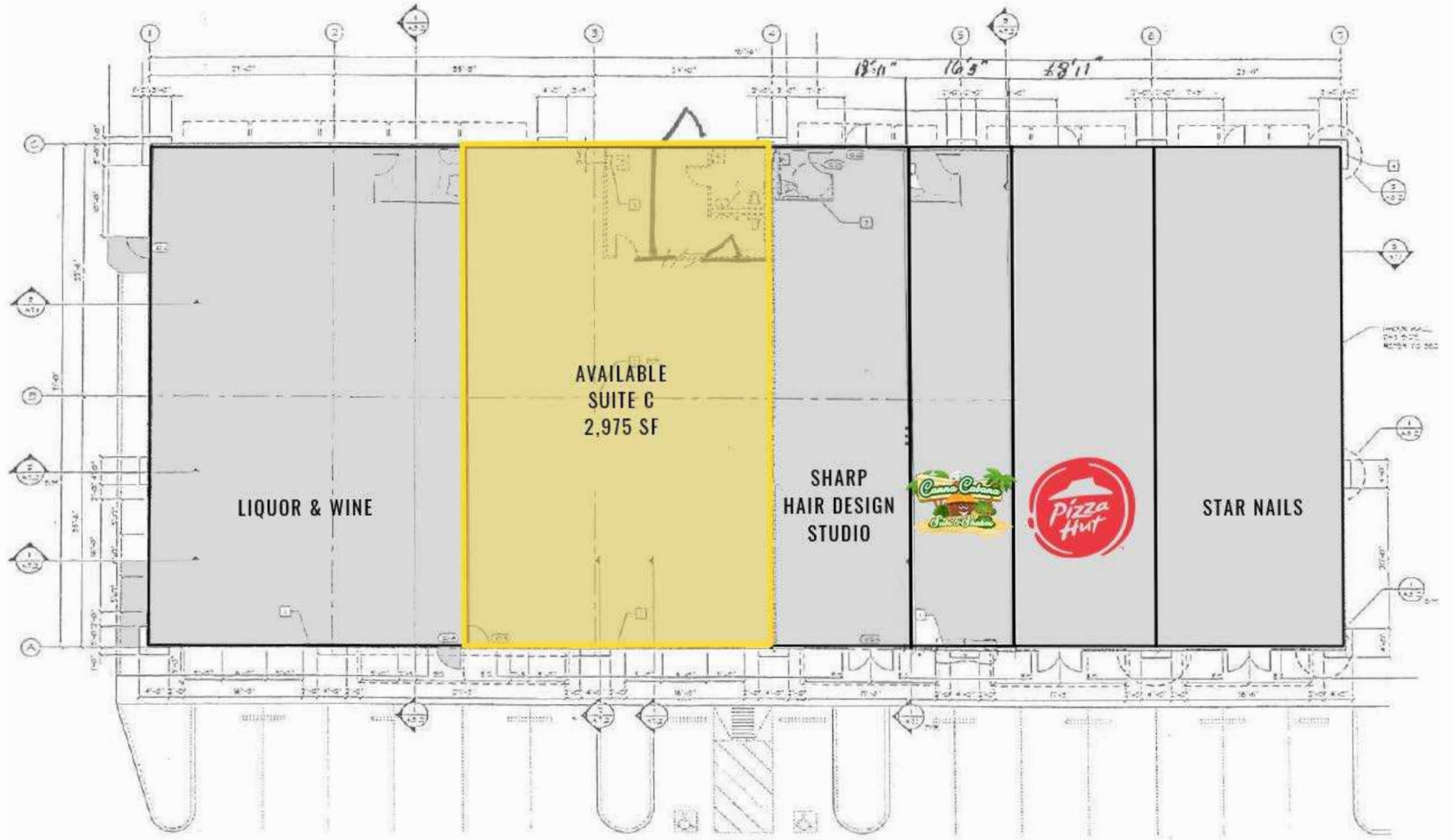
RAINIER LOOP SE

YELM HWY SE - 24,000 CPD

COLLEGE ST. E - 26,000 CPD



FLOOR PLAN





TACOMA | KIRKLAND | PORTLAND | SEATTLE

RELATIONSHIP FOCUSED.
RESULTS DRIVEN.



CARRIE WALKER

📞 253.284.3644

✉️ carrie@firstwesternproperties.com

First Western Properties—Tacoma Inc. | 253.472.0404
6402 Tacoma Mall Blvd, Tacoma, WA 98409 | fwp-inc.com

© First Western Properties, Inc. DISCLAIMER: The above information has been secured from sources believed to be reliable, however, no representations are made to its accuracy. Prospective tenants or buyers should consult their professional advisors and conduct their own independent investigation. Properties are subject to change in price and/or availability without notice.