

FOR LEASE

ASHLEY DISTRIBUTION CENTER - FREDERICKSON INDUSTRIAL PARK

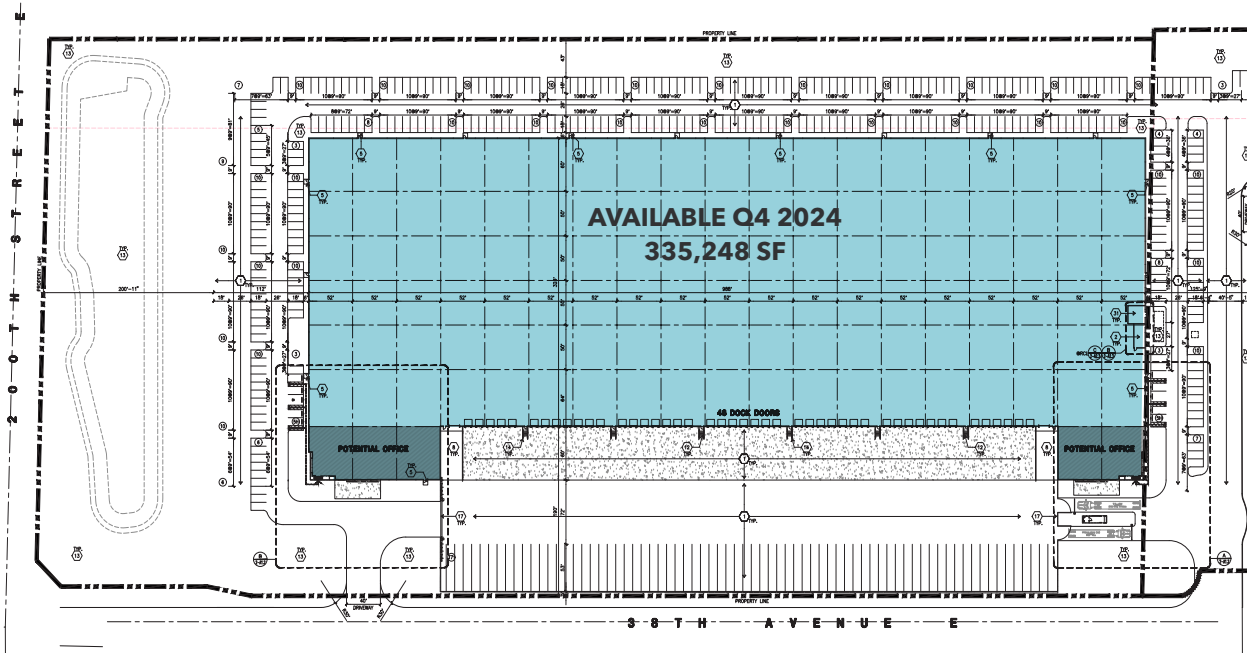
*Site Work Completed
335,248 SF Build-to-Suit*

20623 34TH AVE E
SPANAWAY, WA

KIDDER.COM



km Kidder
Mathews



BUILDING INFORMATION

BTS - 12 Month Delivery

335,248 SF

Site Work Completed

Offsites Completed

Pad and Permit Ready

Build-to-suit office

Concrete tilt construction; reinforced slab

Three phase power

ESFR fire protection

40' clear height

46 Dock Doors

Dock packages on all doors (shelters, bumpers & mechanical levelers)

TY CLARKE
Kidder Mathews
253.722.1419
ty.clarke@kidder.com

TODD CLARKE
Kidder Mathews
253.722.1422
todd.clarke@kidder.com

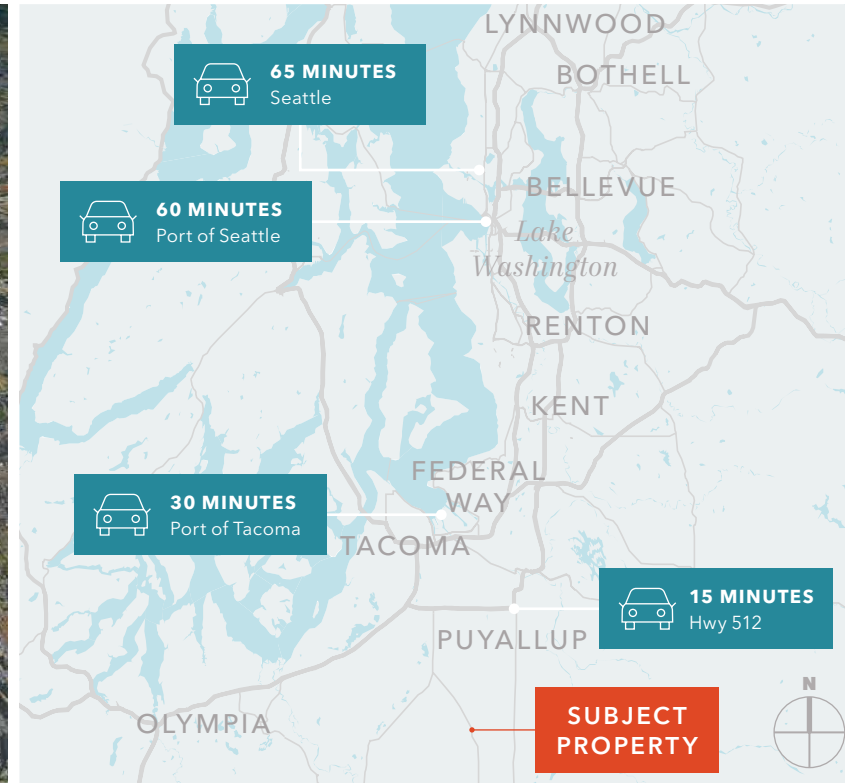
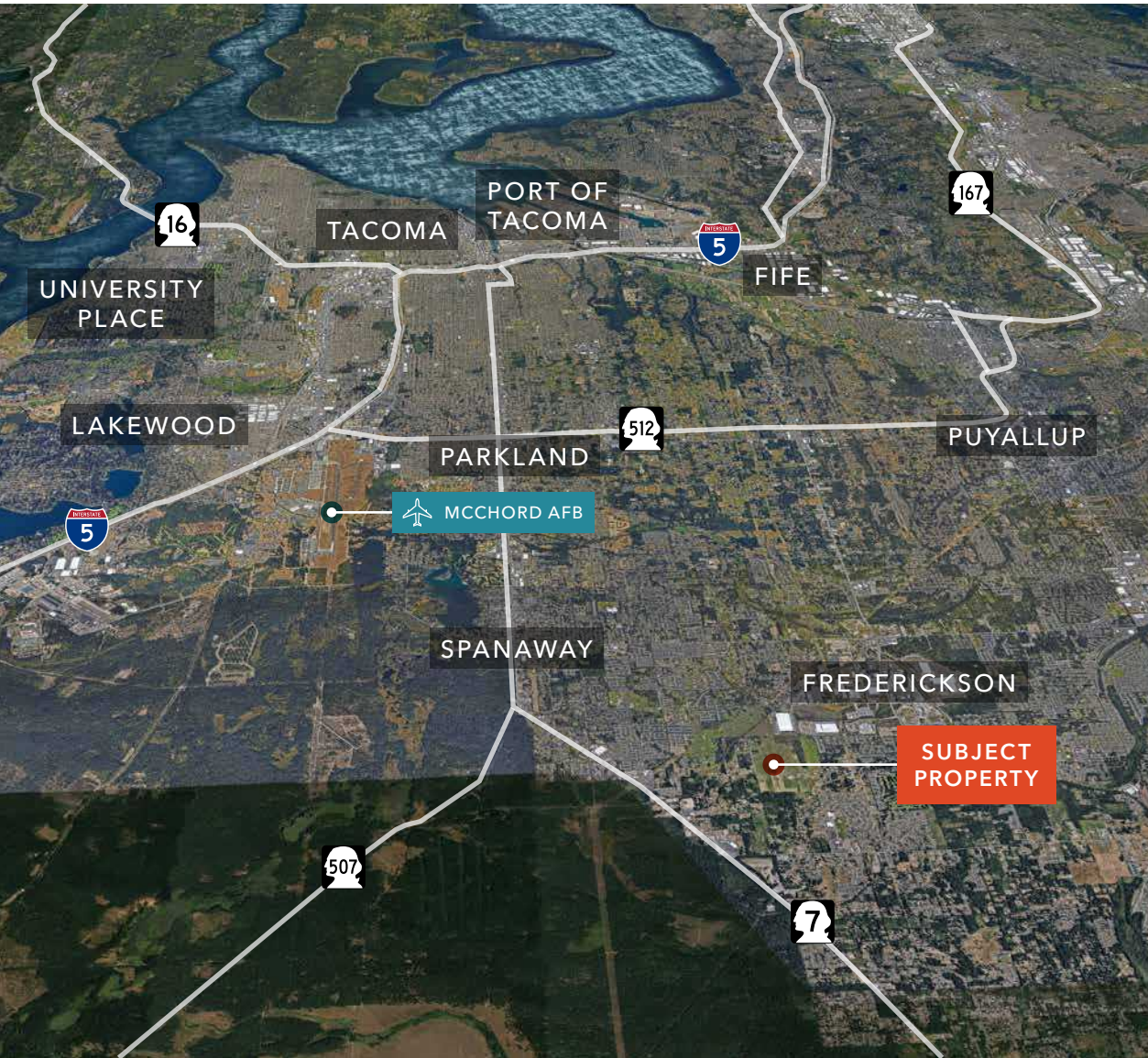
AARON HODGDON
Hodgdon Group
909.229.2192
aaron@hodgdongroup.com

KIDDER.COM

This information supplied herein is from sources we deem reliable. It is provided without any representation, warranty, or guarantee, expressed or implied as to its accuracy. Prospective Buyer or Tenant should conduct an independent investigation and verification of all matters deemed to be material, including, but not limited to, statements of income and expenses. Consult your attorney, accountant, or other professional advisor.



ASHLEY DISTRIBUTION CENTER - FREDERICKSON INDUSTRIAL PARK



LOCATION HIGHLIGHTS

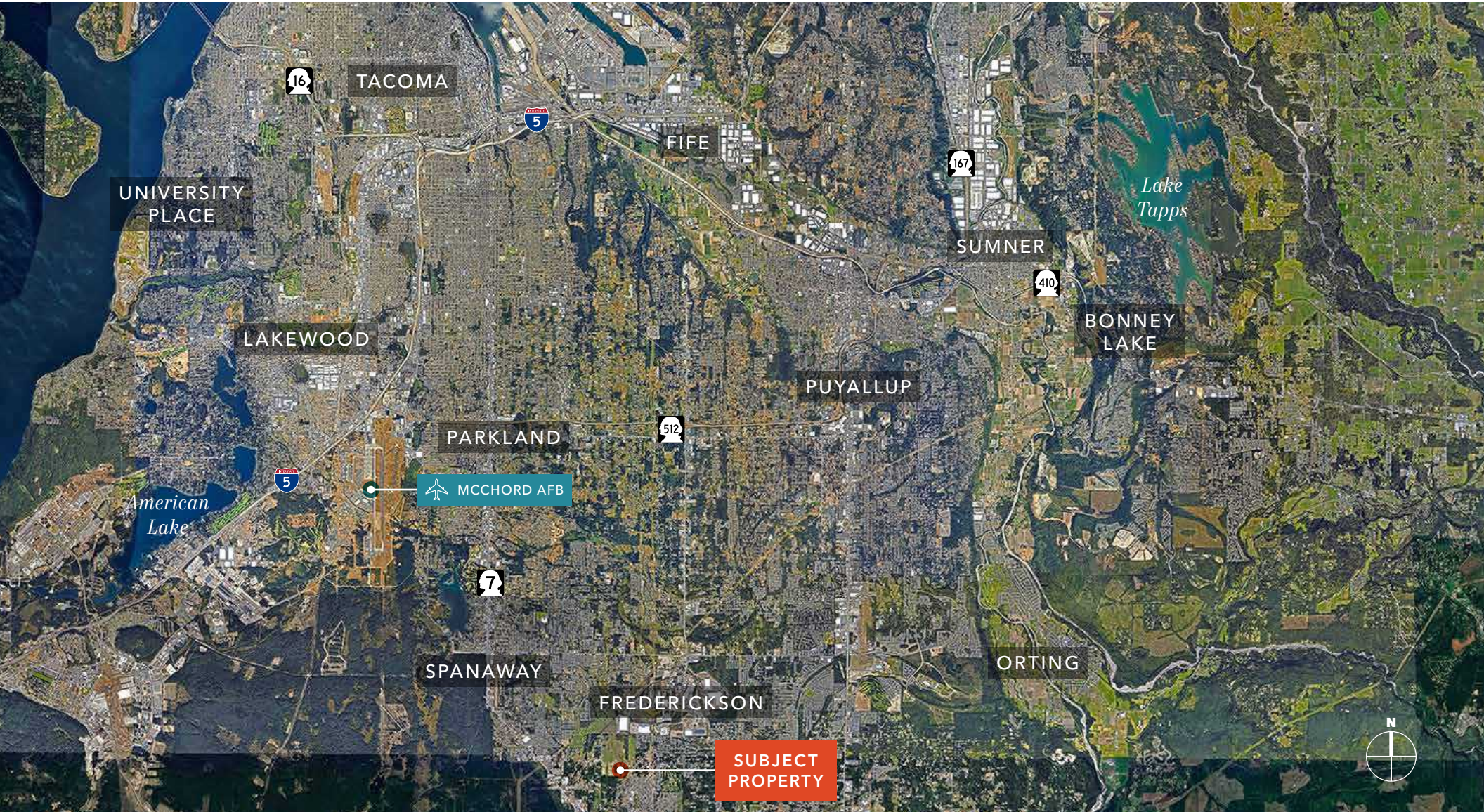
I-5	19 Minute
Highway 512	15 Minutes
Port of Tacoma	30 Minutes
Port of Seattle	60 Minutes
Seattle	65 Minutes

KIDDER.COM

This information supplied herein is from sources we deem reliable. It is provided without any representation, warranty, or guarantee, expressed or implied as to its accuracy. Prospective Buyer or Tenant should conduct an independent investigation and verification of all matters deemed to be material, including, but not limited to, statements of income and expenses. Consult your attorney, accountant, or other professional advisor.



ASHLEY DISTRIBUTION CENTER - FREDERICKSON INDUSTRIAL PARK



KIDDER.COM

This information supplied herein is from sources we deem reliable. It is provided without any representation, warranty, or guarantee, expressed or implied as to its accuracy. Prospective Buyer or Tenant should conduct an independent investigation and verification of all matters deemed to be material, including, but not limited to, statements of income and expenses. Consult your attorney, accountant, or other professional advisor.

