

1,102 RSF available For Sublease

Nordstrom Medical Building
1229 Madison St, Seattle WA

Building amenities:

- Covered on-site parking
- Stunning views of downtown Seattle
- Premier location in the medical district

Medical office space for sublease:

- Suite 1290
- 1,102 RSF
- Sublease term through August 31, 2031
- Partial 12th floor
- Available now

Sublease highlights:

- 2 exam rooms with sinks
- 1 large corner office
- Large staff lounge
- Waiting area
- Reception + Admin area
- Storage room

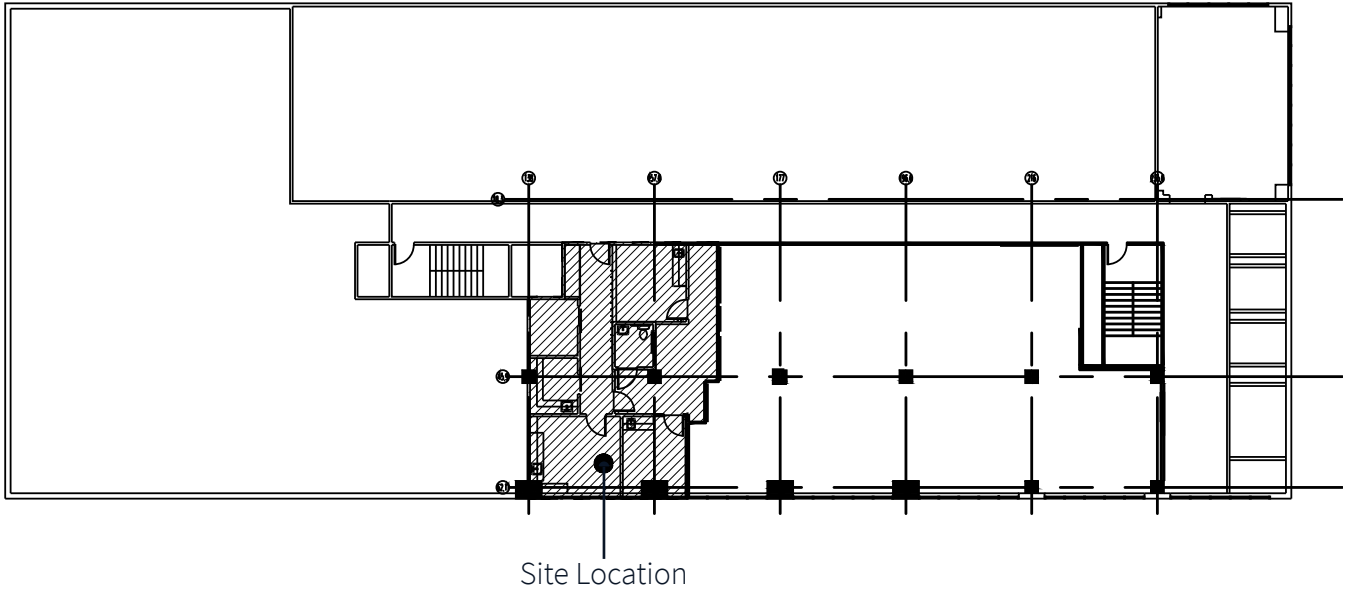
Clay Nielsen

+1 206 790 3368

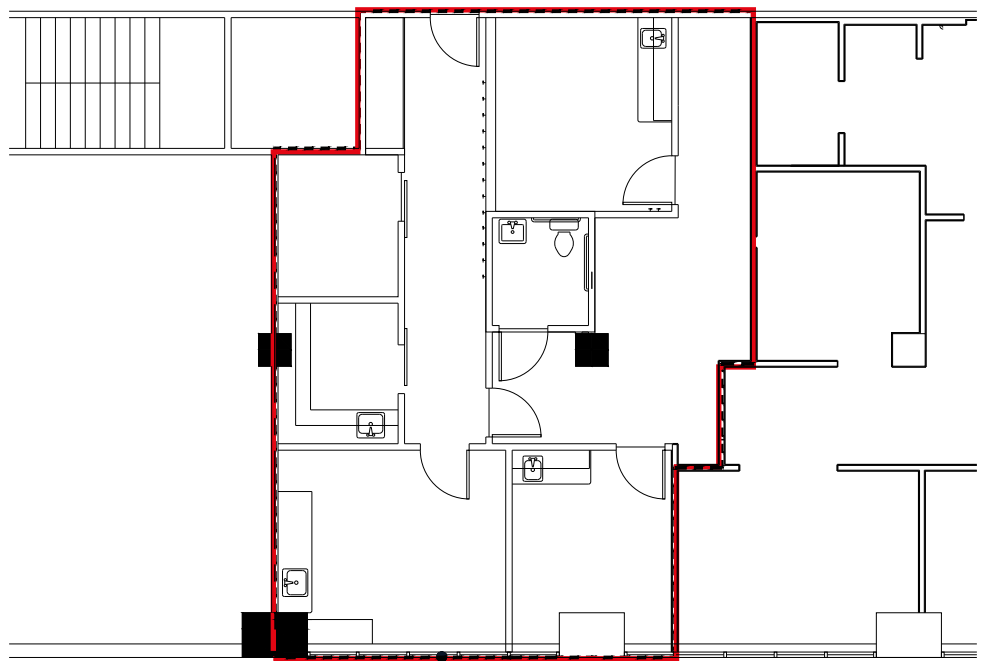
clay.nielsen@jll.com



Floor Plan - Floor 12

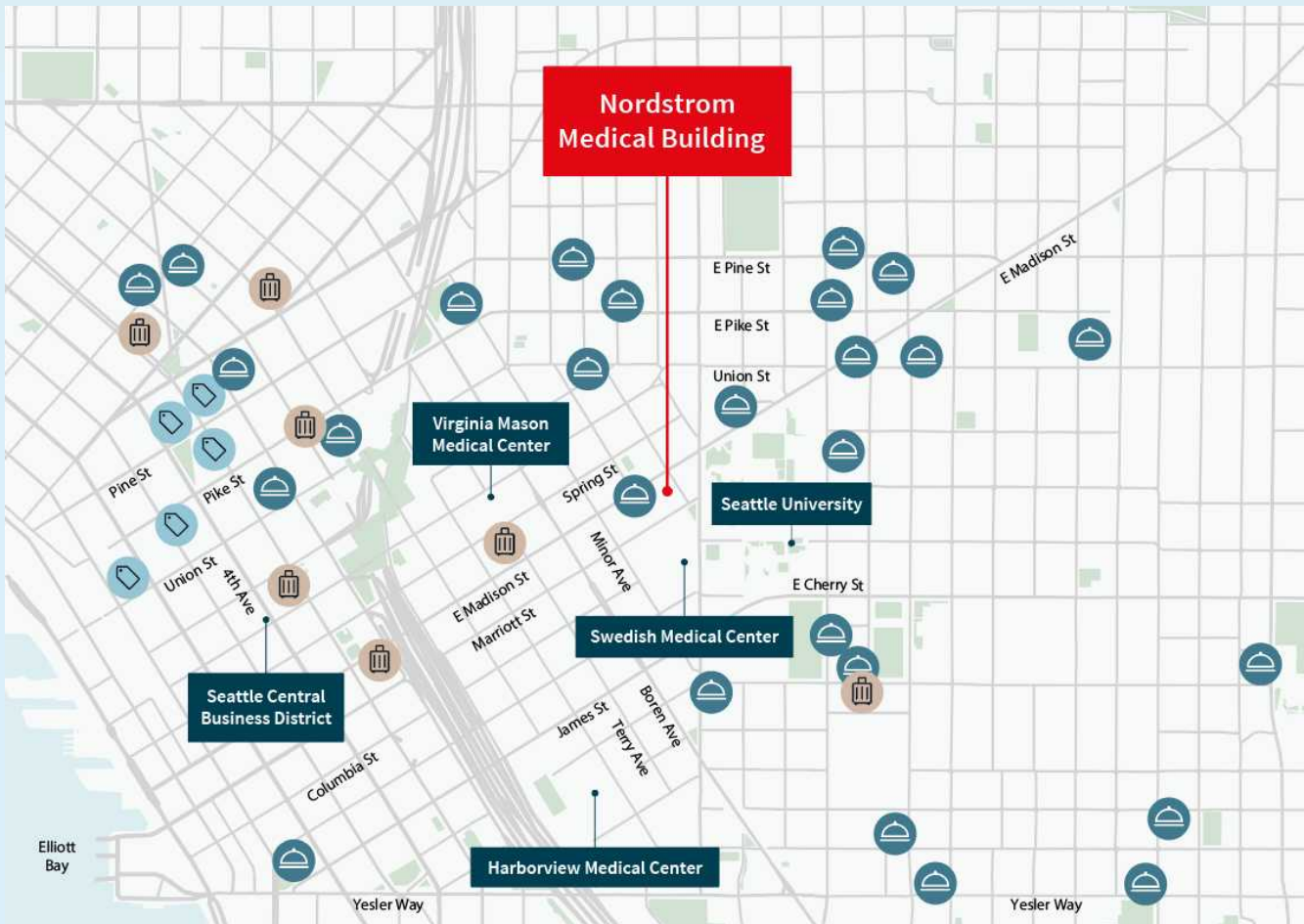


Existing plan



1,102 RSF For Sublease

1229 Madison St, Seattle WA / Nordstrom Medical Building



Clay Nielsen

clay.nielsen@jll.com

+1 206 790 3368

jll.com

Jones Lang LaSalle Brokerage Inc.

About JLL

For over 200 years, JLL (NYSE: JLL), a leading global commercial real estate and investment management company, has helped clients buy, build, occupy, manage and invest in a variety of commercial, industrial, hotel, residential and retail properties. A Fortune 500® company with annual revenue of \$20.9 billion and operations in over 80 countries around the world, our more than 105,000 employees bring the power of a global platform combined with local expertise. Driven by our purpose to shape the future of real estate for a better world, we help our clients, people and communities SEE A BRIGHTER WAYSM. JLL is the brand name, and a registered trademark, of Jones Lang LaSalle Incorporated. For further information, visit jll.com.

