

FOR LEASE

# PARKLANE EXECUTIVE CENTER

*Located in Federal Way City Center*

31620 23RD AVENUE S, FEDERAL WAY, WA



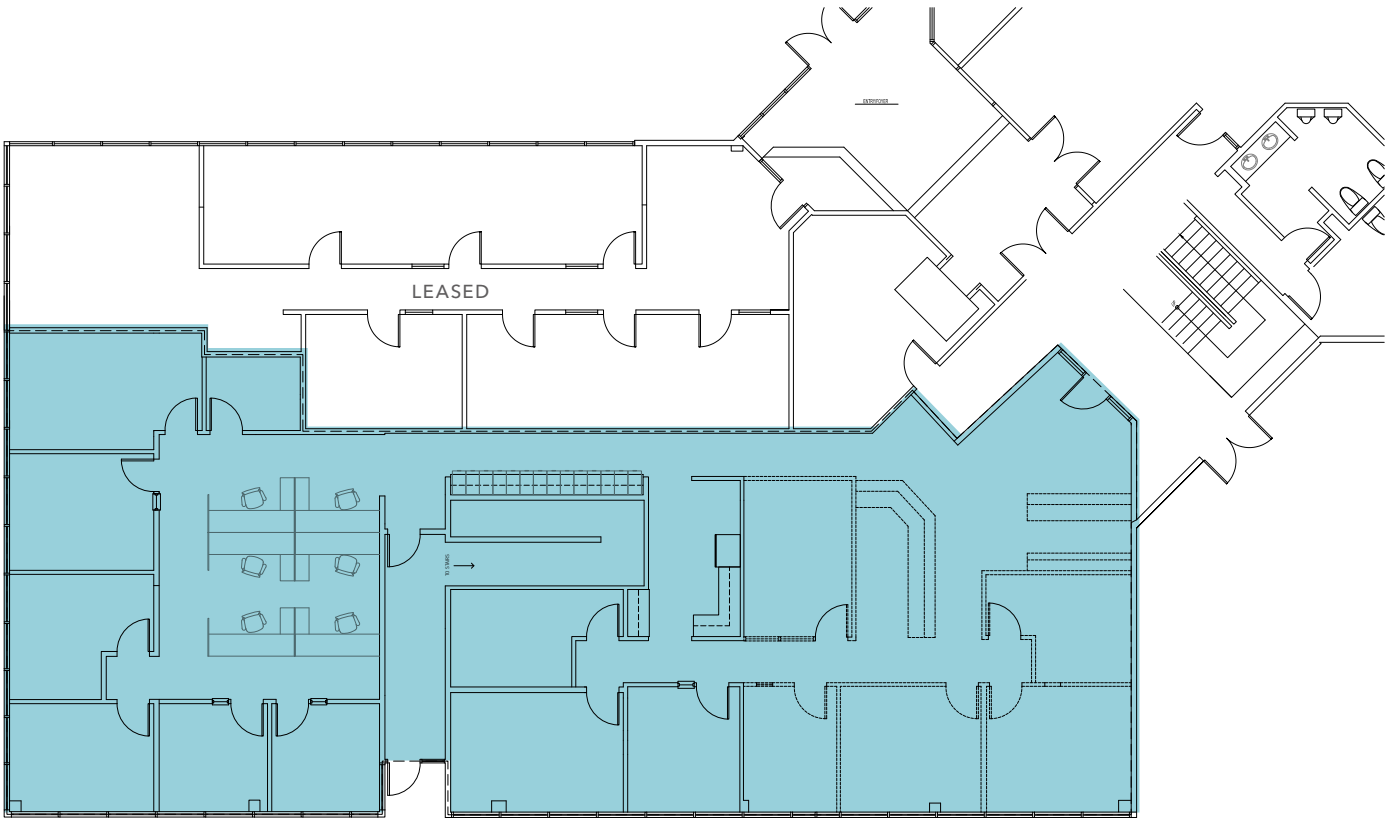
# FIRST FLOOR PLAN

4,408 SF

SUITE 110

\$26.00

LEASE RATE (PSF), FULL SERVICE



# SECOND FLOOR PLAN



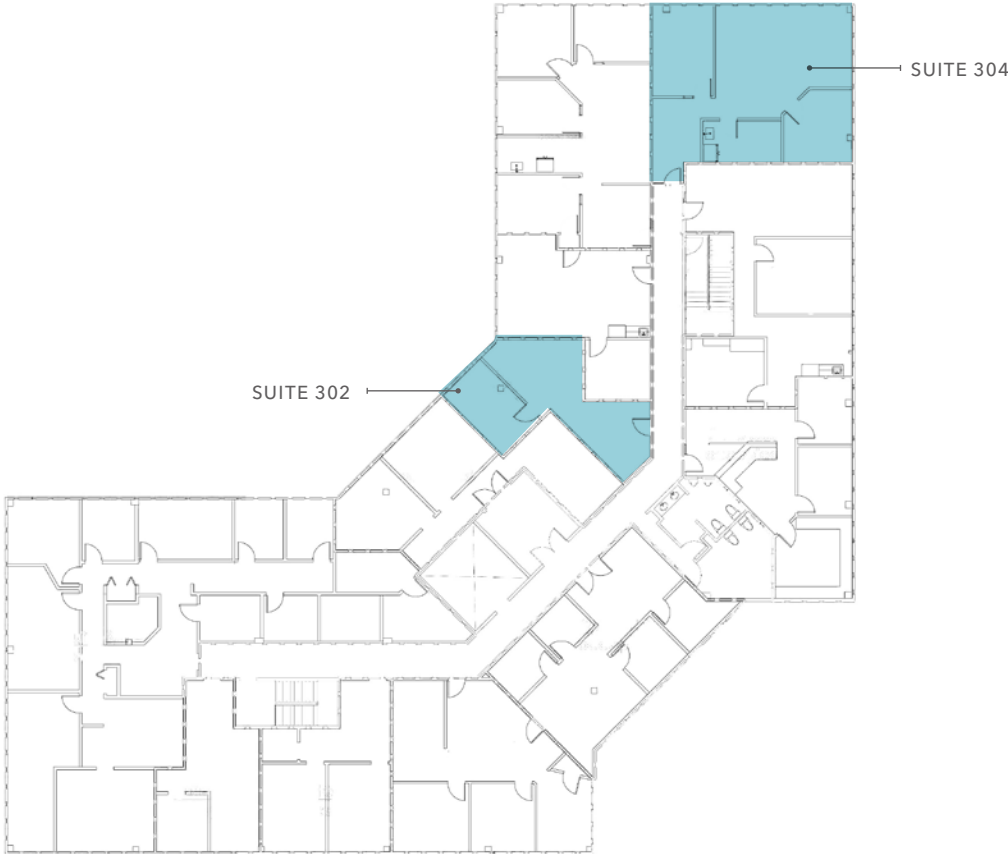
*670 SF*

SUITE 205

*\$26.00*

LEASE RATE (PSF), FULL SERVICE

# THIRD FLOOR PLAN



---

*1,167 SF*

SUITE 304

---

*560 SF*

SUITE 302

---

*\$26.00*

LEASE RATE (PSF), FULL SERVICE



# HIGHLY- ACCESSIBLE LOCATION

Close to Interstate 5

Adjacent to Transit Center

Walking distance to restaurants and shopping

**5 MIN**

TIGARD RETAIL CORE

**13 MIN**

PORTLAND CBD







## PARKLANE EXECUTIVE CENTER

*For more information on  
this property, please contact*

**WILL FRAME**  
253.948.6895  
will.frame@kidder.com

**DREW FRAME**  
253.948.7032  
drew.frame@kidder.com

**KIDDER.COM**

This information supplied herein is from sources we deem reliable. It is provided without any representation, warranty, or guarantee, expressed or implied as to its accuracy. Prospective Buyer or Tenant should conduct an independent investigation and verification of all matters deemed to be material, including, but not limited to, statements of income and expenses. Consult your attorney, accountant, or other professional advisor.

