



CLARION PARTNERS

For Lease

**NAI** Puget Sound Properties

SeaTac Industrial Park

Building 2

18940 13th Place South

SeaTac, WA

4,896 Square Feet Available



## Property Highlights

- Approximately 4,896 SF with 1,088 SF of Office
- 2 Dock High Doors
- 14'-16' clear height
- Located on Des Moines Memorial Drive, just South of SeaTac Int'l Airport
- Close proximity to 1-5, SR-99 and SR-509
- Loading best suited for box trucks – Fire lane creates limited loading area
- Available Now
- Call for pricing



**NAI** Puget Sound Properties

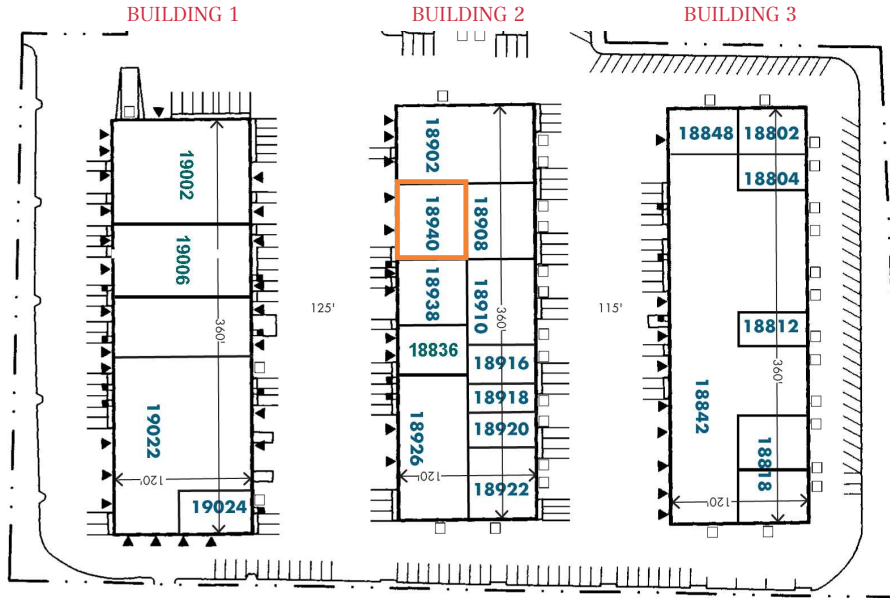
Kent Channing  
+1 425 586 5628  
kchanning@nai-psp.com

Arie Salomon, SIOR, CCIM  
+1 425 586 5636  
asalomon@nai-psp.com



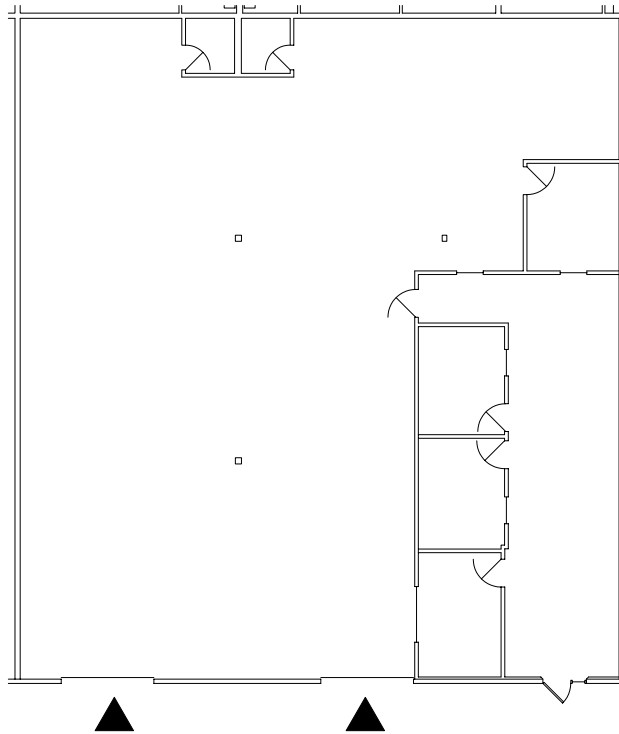
# CLARION PARTNERS

18940 13th Place South SeaTac, WA



### LEGEND

- ▲ DOCK-HIGH DOOR
- GRADE-LEVEL DOOR



Property Owned by:



10900 NE 8th Street, Suite 1500

Bellevue, Washington 98004

+1 425 586 5600

[nai-psp.com](http://nai-psp.com)