

FOR LEASE

FINISHING TRADES INSTITUTE NORTHWEST BUILDING

6770 E MARGINAL WAY S, SEATTLE, WA 98108



*Quality office building, with 3rd floor
spaces available, 1,350-3,160 SF, multiple
configurations*

Quality Georgetown office space

1,350 - 3,160 SF available

Elevator served building

\$32.00 PSF/year, full-service

VARIOUS

CONFIGURATIONS

This information supplied herein is from sources we deem reliable. It is provided without any representation, warranty, or guarantee, expressed or implied as to its accuracy. Prospective Buyer or Tenant should conduct an independent investigation and verification of all matters deemed to be material, including, but not limited to, statements of income and expenses. Consult your attorney, accountant, or other professional advisor.

SPENCER CLAPP

206.248.7427

spencer.clapp@kidder.com

KIDDER.COM

km Kidder
Mathews

3,160 SF

SUITE 321

1,350 SF

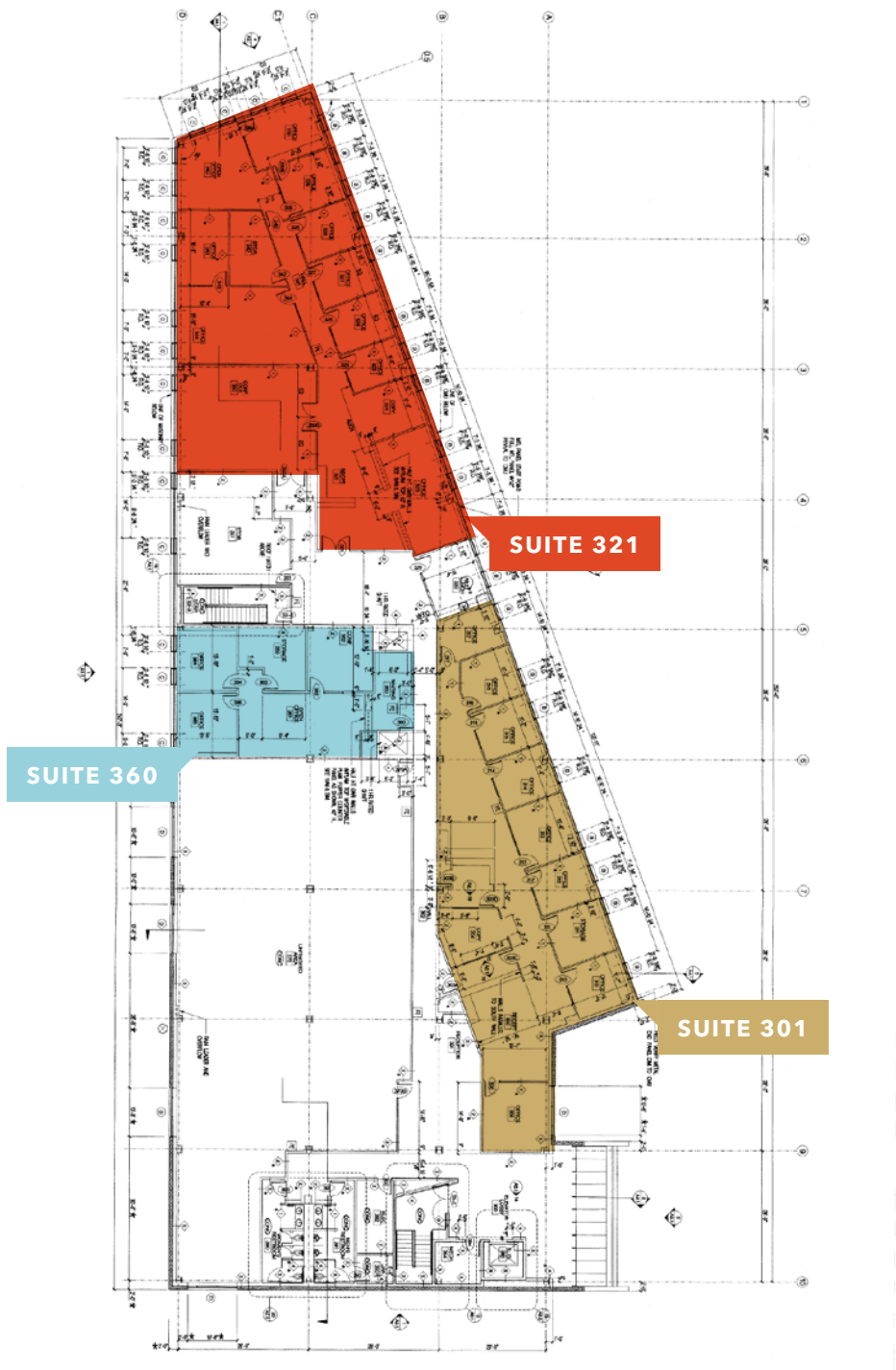
SUITE 360

2,785 SF

SUITE 301

NOW

AVAILABLE



SPENCER CLAPP
206.248.7427
spencer.clapp@kidder.com

KIDDER.COM

This information supplied herein is from sources we deem reliable. It is provided without any representation, warranty, or guarantee, expressed or implied as to its accuracy. Prospective Buyer or Tenant should conduct an independent investigation and verification of all matters deemed to be material, including, but not limited to, statements of income and expenses. Consult your attorney, accountant, or other professional advisor.



FINISHING TRADES INSTITUTE NORTHWEST BUILDING



KIDDER.COM

This information supplied herein is from sources we deem reliable. It is provided without any representation, warranty, or guarantee, expressed or implied as to its accuracy. Prospective Buyer or Tenant should conduct an independent investigation and verification of all matters deemed to be material, including, but not limited to, statements of income and expenses. Consult your attorney, accountant, or other professional advisor.

km Kidder Mathews