

FOR SUBLEASE

10700 NORTHUP WAY | BELLEVUE, WA 98004

10700 BUILDING



SPACE

HIGHLIGHTS

- + Available immediately
- + Master Lease Expires July 31, 2028
- + Shorter term subleases considered.
- + Plug and Play ready with furniture available
- + Parking ratio: 4.58 / 1,000 RSF (surface and covered available)
- + Centrally located between Downtown Kirkland and Downtown Bellevue
- + Easy access to SR-520 & I-405

SPACE AVAILABLE

1ST FLOOR **110+120** SUITES **3,485 - 11,646** RSF



ADDITIONAL FEATURES



Fitness center + showers



Adjacent to the Cross Kirkland Corridor trail



520 Bike Trail



Located next to South Kirkland Park and Ride



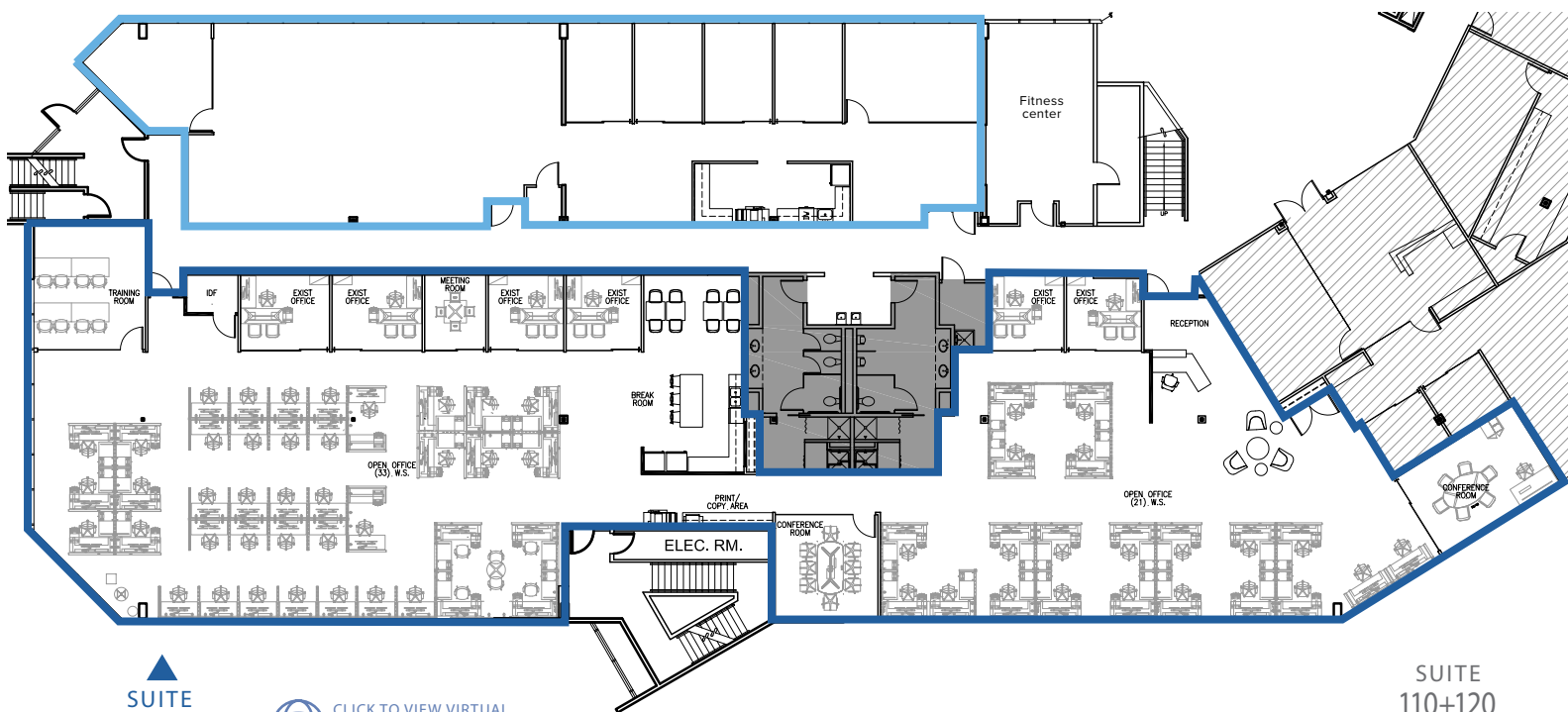
Close proximity to Kirkland amenities such as Carillon Point and the Lake Washington waterfront



AS-BUILT FLOOR PLAN

AVAILABLE NOW

SUITE
110
3,485 SF



SUITE
120
8,161 SF

AVAILABLE 1/1/2025



CLICK TO VIEW VIRTUAL
TOUR OF SUITE 120
*NEW RECEPTION AND KITCHEN
AREA NOT SHOWN ON VIRTUAL
TOUR

SUITE
110+120
11,646 SF



Sam Ziemba
+1 425 974 4005
sam.ziemba@jll.com

Jake Bos
+1 425 974 4086
jake.bos@jll.com

Bailey Hallis
+1 425 974 4009
bailey.hallis@jll.com

