

# WEST VALLEY BUSINESS PARK - BLDG C



19032 66TH AVENUE S | KENT | WASHINGTON | 98032

## FOR MORE INFORMATION:

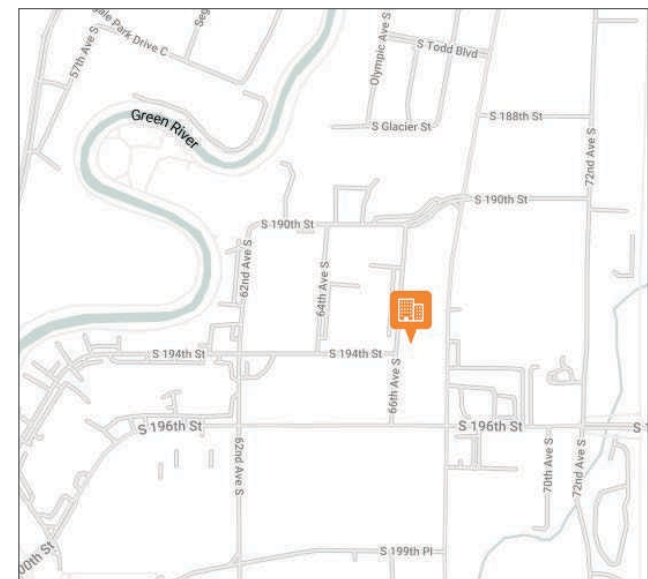
**SEAN DURKIN, SIOR, MSRE, CCIM**  
425.830.2647  
sdurkin@lee-associates.com

**JOHN BRUSSA**  
425.891.1424  
jbrussa@lee-associates.com

**TAYLOR HAZARD**  
206.487.7027  
thazard@bkmgmt.com

## PROPERTY FEATURES

- Professional image environment
- Extensive landscape renovations
- Office suites from 512 SF - 1,200 SF
- Flex/Industrial suites from 1,000 SF - 4,000 SF
- Excellent visibility off of Hwy-181
- Quick access to major area highways
- Flexible floor plan options available
- Ability to expand during initial lease term

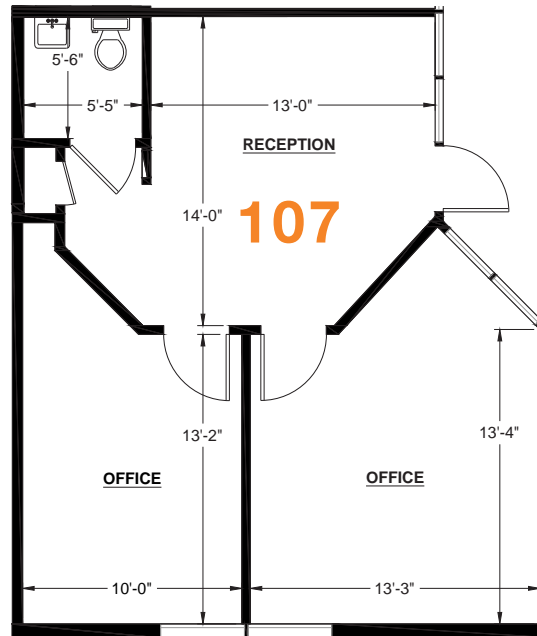
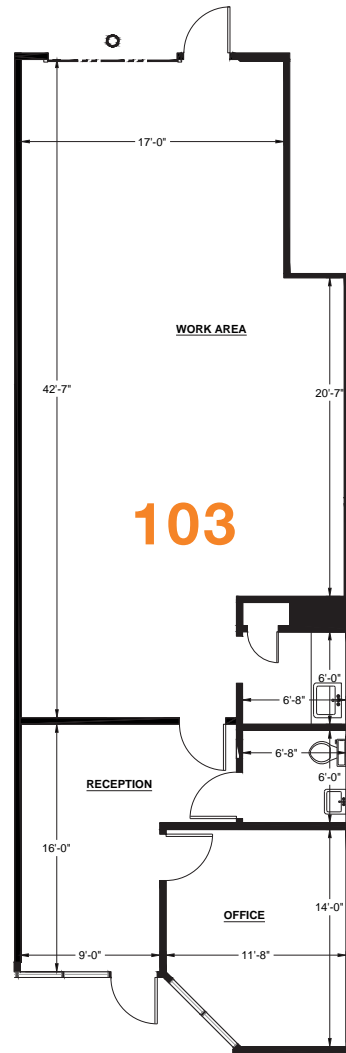


The information contained herein is believed to be accurate but is not warranted as to its accuracy and may change or be updated without notice. Seller or landlord makes no representation as to the environmental condition of the property and recommends purchaser's or tenant's independent investigation.

# WEST VALLEY BUSINESS PARK - BLDG C

## SITE PLAN

VARIETY OF SPACE  
CONFIGURATIONS AVAILABLE



### FOR MORE INFORMATION

**SEAN DURKIN, SIOR, MSRE, CCIM**  
425.830.2647  
sdurkin@lee-associates.com

**JOHN BRUSSA**  
425.891.1424  
jbrussa@lee-associates.com

**TAYLOR HAZARD**  
206.487.7027  
thazard@bkmmgmt.com

**WEST VALLEY BUSINESS PARK**  
19032 66TH AVENUE S  
KENT, WASHINGTON 98032



### AVAILABILITIES

SUITE	TOTAL SF	OFFICE SF	AVAILABLE
103	1,400	487	Now
107	704	704	Now

# WEST VALLEY BUSINESS PARK - BLDG C

ON-SITE PROPERTY  
MANAGEMENT

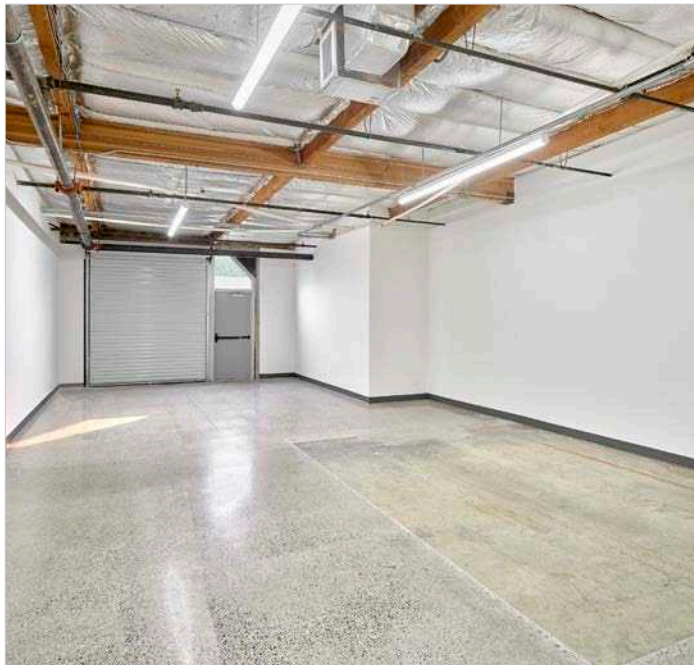


## FOR MORE INFORMATION

**SEAN DURKIN, SIOR, MSRE, CCIM**  
425.830.2647  
sdurkin@lee-associates.com

**JOHN BRUSSA**  
425.891.1424  
jbrussa@lee-associates.com

**TAYLOR HAZARD**  
206.487.7027  
thazard@bkmmgmt.com



**WEST VALLEY BUSINESS PARK**  
19032 66TH AVENUE S  
KENT, WASHINGTON 98032

**LEE & ASSOCIATES**  
COMMERCIAL REAL ESTATE SERVICES

# WEST VALLEY BUSINESS PARK - BLDG C

## AMENITIES & IMPROVEMENTS



# DISCOVER AMENITIES

BE IN THE MIDST OF IT ALL.



### NEARBY AMENITIES

Costco Wholesale  
Nordstrom  
Target  
The Home Depot  
REI  
Total Wine & More

### FOR MORE INFORMATION

**SEAN DURKIN, SIOR, MSRE, CCIM**  
425.830.2647  
sdurkin@lee-associates.com

**JOHN BRUSSA**  
425.891.1424  
jbrussa@lee-associates.com

**TAYLOR HAZARD**  
206.487.7027  
thazard@bkmmgmt.com

**WEST VALLEY BUSINESS PARK**  
19032 66TH AVENUE S  
KENT, WASHINGTON 98032

 **LEE &  
ASSOCIATES**  
COMMERCIAL REAL ESTATE SERVICES

NEARBY AMENITIES