

# FOR LEASE HARBOR MARINA CORPORATE CENTER

1001-1021 SW KLUCKITAT WAY, SEATTLE, WA



For more information:

**Bob Swain, CCIM**  
+1 425 586 5622  
bswain@nai-psp.com

**John Vernon**  
+1 425 586 5638  
jvernon@nai-psp.com

**NAI** Puget Sound  
Properties

# PROPERTY OVERVIEW

## HARBOR MARINA CORPORATE CENTER

1001 SW KCLICKITAT WAY, SEATTLE, WA 98134



**Fantastic tenant amenities. Deli on site, storage/warehouse available, recreational moorage available, and access to West Seattle bike path.**



**Wide range of space solutions**



**Excellent location close to Downtown, West Seattle, Alki Beach, Georgetown, and SODO. Easy Access to I5 & SR 99. Adjacent to harbor container terminals.**



**Great views of the Duwamish Waterway**



**Flexible lease terms available**



**Free parking 2/1000 SF**



**Furnished suites available**



**Public transit with in 0.2 miles**



**Call for rates**

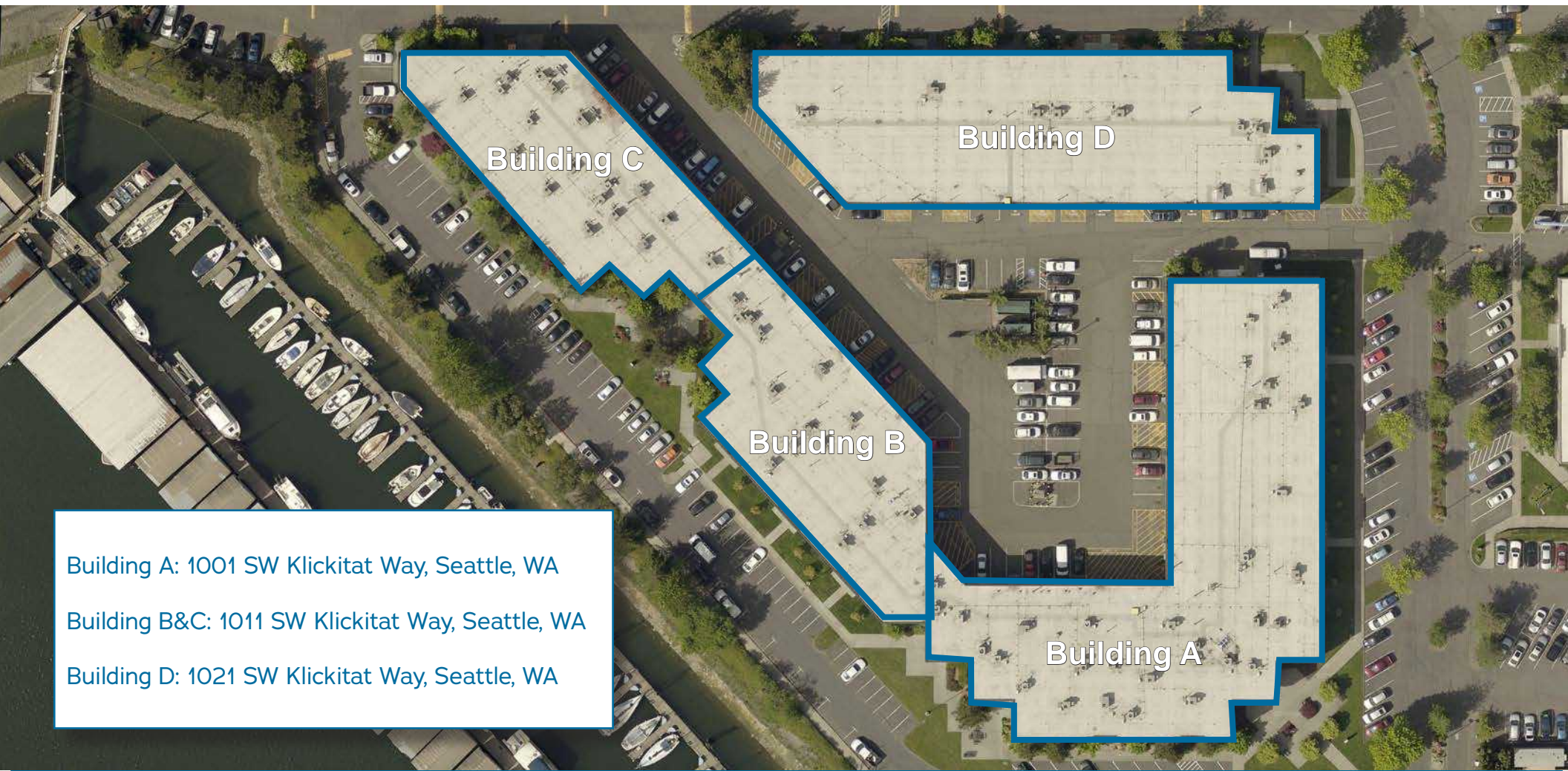


**Free parking!!!!**



# BUILDING LOCATIONS HARBOR MARINA CORPORATE CENTER

1001 SW KLINKITAT WAY, SEATTLE, WA 98134

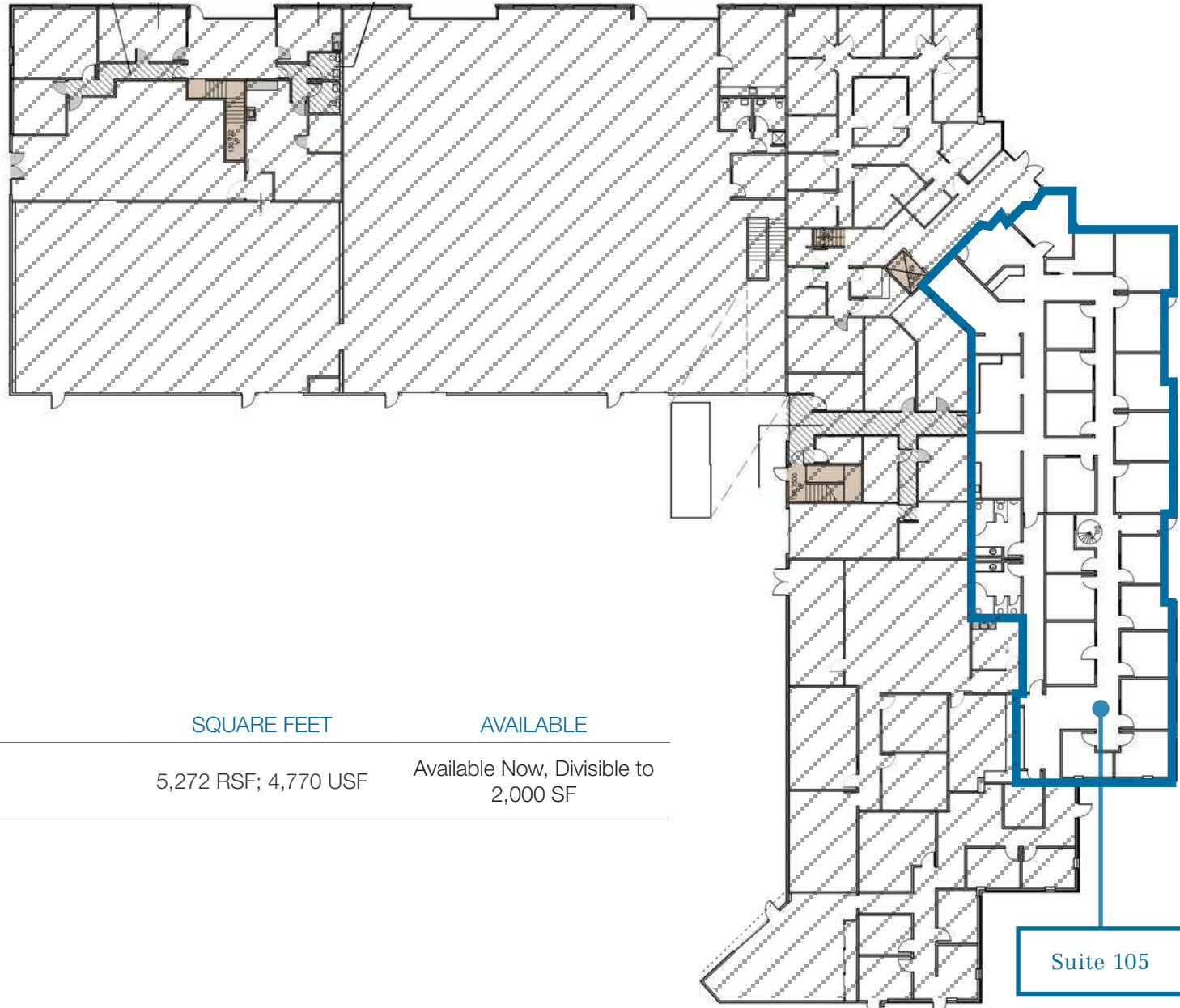


Building A: 1001 SW Klickitat Way, Seattle, WA

Building B&C: 1011 SW Klickitat Way, Seattle, WA

Building D: 1021 SW Klickitat Way, Seattle, WA

# BUILDING A FLOOR 1

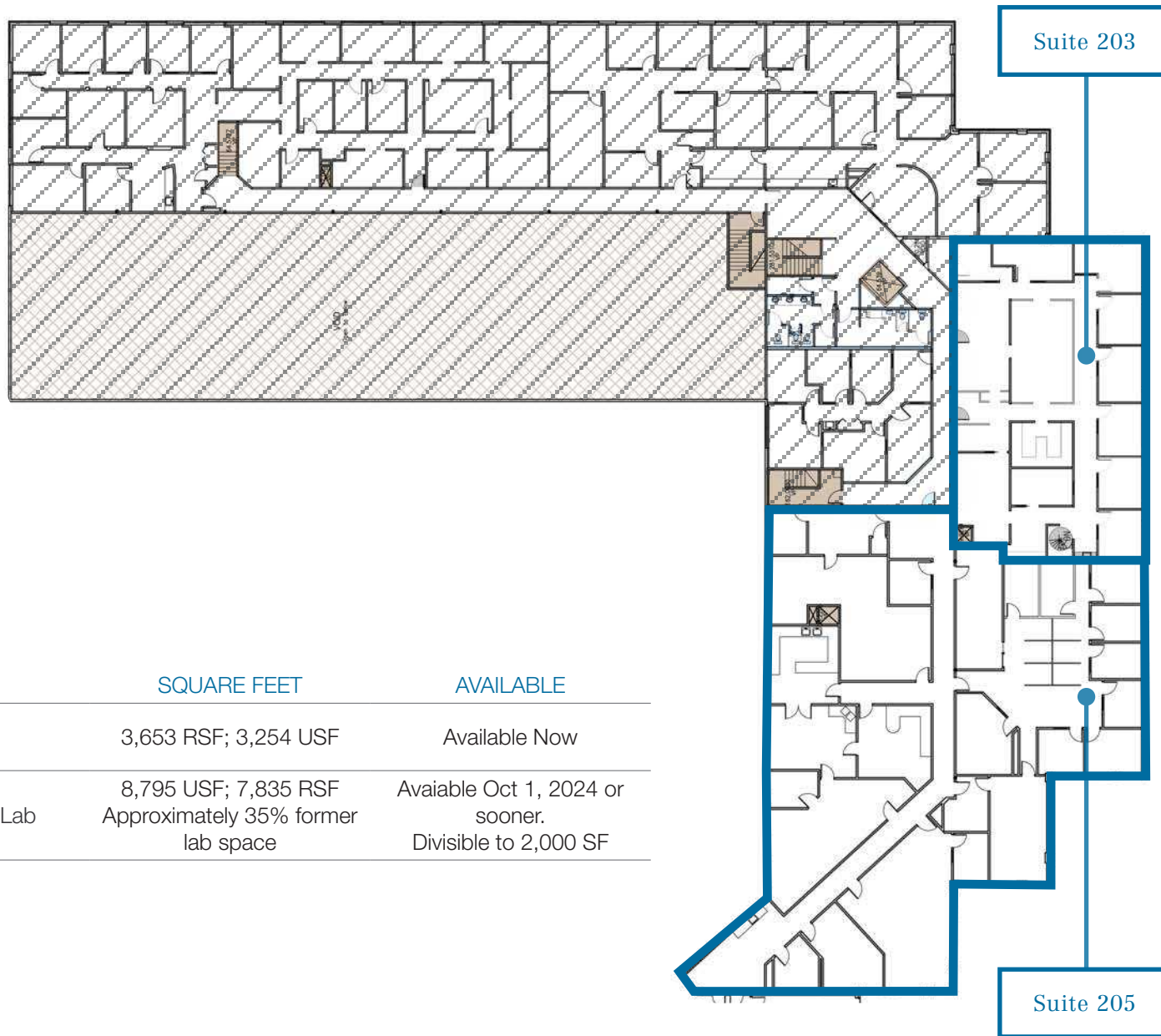


## CURRENT AVAILABILITIES

SUITE	TYPE	SQUARE FEET	AVAILABLE
A-105	Office	5,272 RSF; 4,770 USF	Available Now, Divisible to 2,000 SF

 [View Virtual Tour](#)

# BUILDING A FLOOR 2



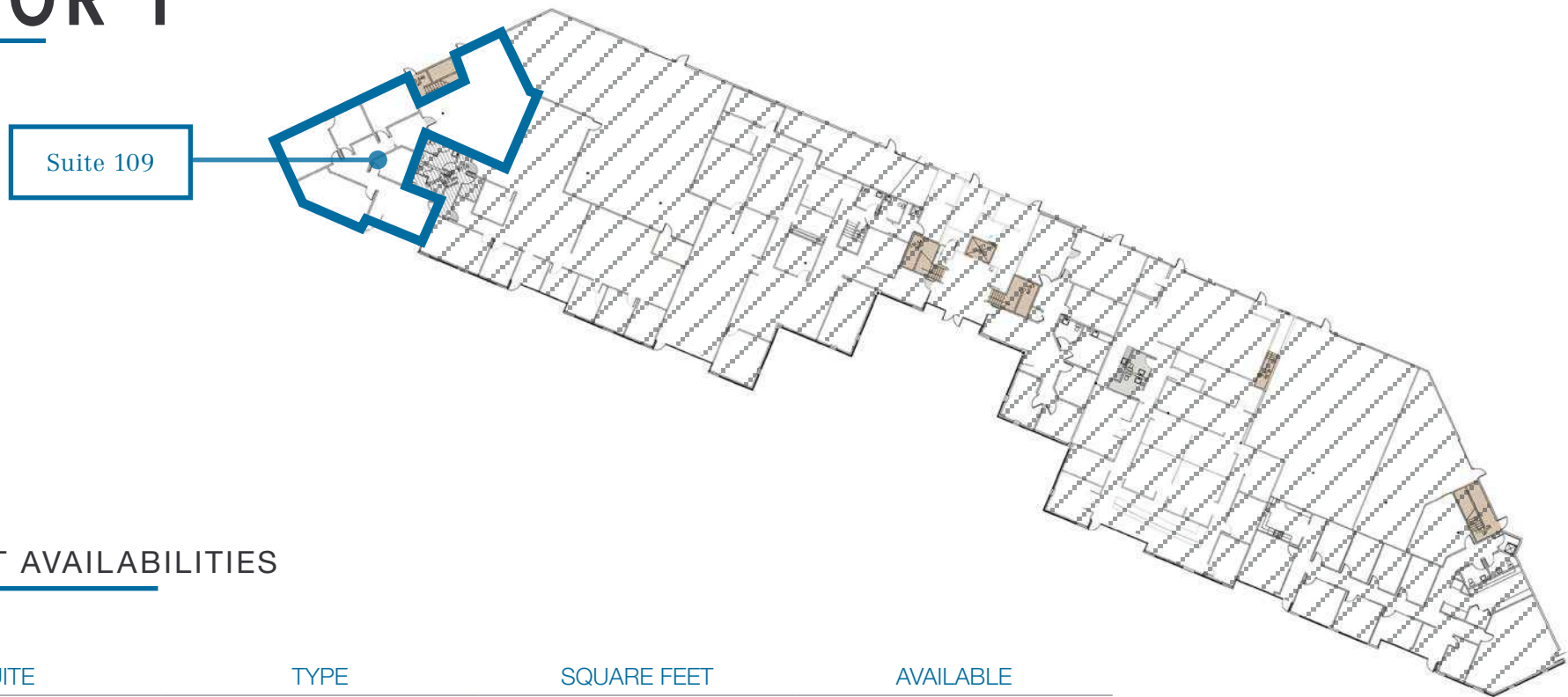
## CURRENT AVAILABILITIES

SUITE	TYPE	SQUARE FEET	AVAILABLE
A-203	Office	3,653 RSF; 3,254 USF	Available Now
A-205	Office/Former Lab	8,795 USF; 7,835 RSF Approximately 35% former lab space	Available Oct 1, 2024 or sooner. Divisible to 2,000 SF

**3D View Virtual Tour**

# BUILDING B/C

## FLOOR 1



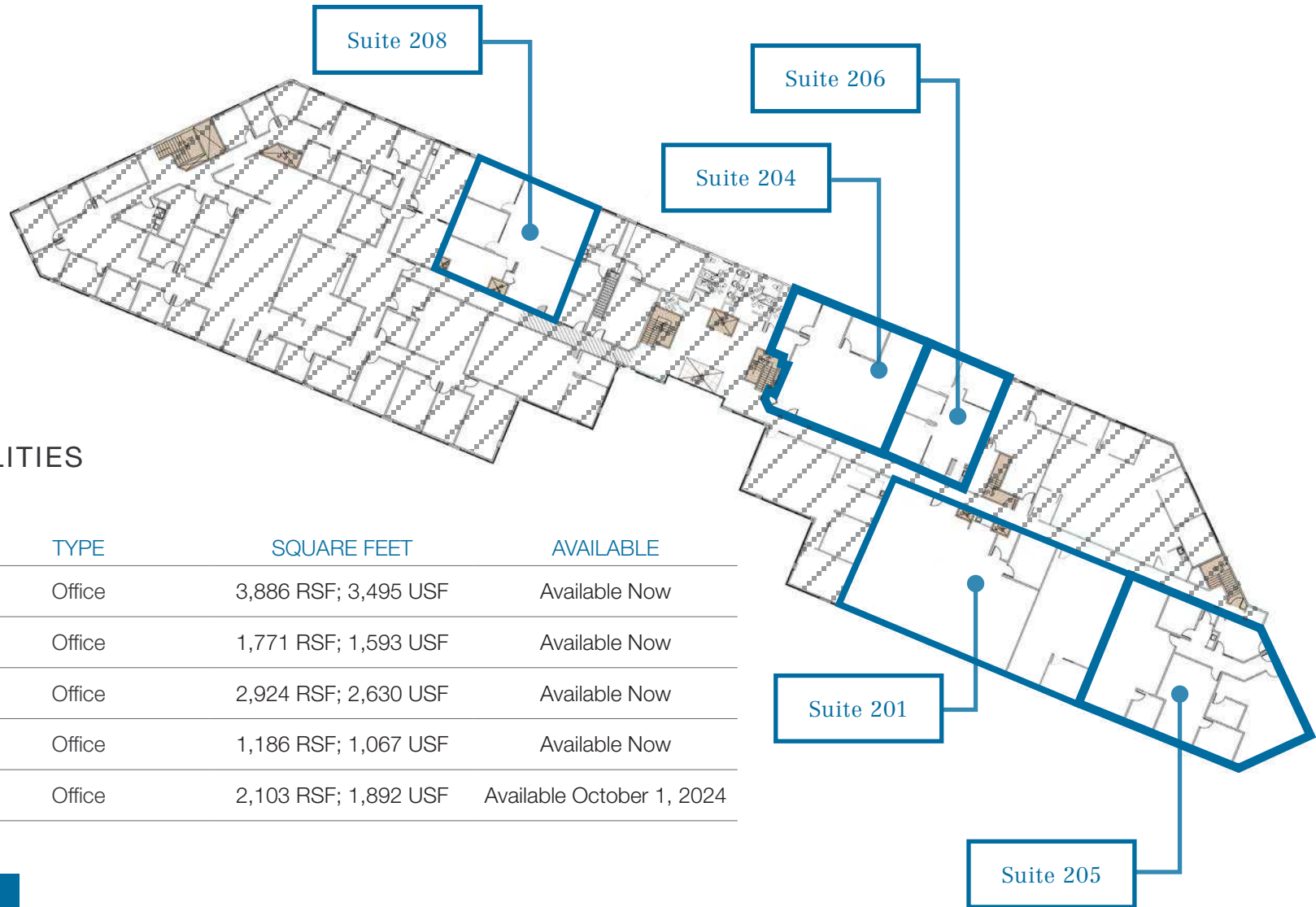
### CURRENT AVAILABILITIES

SUITE	TYPE	SQUARE FEET	AVAILABLE
C-109	Office/ Warehouse	2,700.80 Total RSF; 2,456.11 USF with 977 SF of warehouse	Available Now

[3D View Virtual Tour](#)

# BUILDING B/C

## FLOOR 2



### CURRENT AVAILABILITIES

SUITE	TYPE	SQUARE FEET	AVAILABLE
B-201	Office	3,886 RSF; 3,495 USF	Available Now
B-204	Office	1,771 RSF; 1,593 USF	Available Now
B-205	Office	2,924 RSF; 2,630 USF	Available Now
B-206	Office	1,186 RSF; 1,067 USF	Available Now
B-208	Office	2,103 RSF; 1,892 USF	Available October 1, 2024

[3D View Virtual Tour](#)

# LOCATION

## HARBOR MARINA CORPORATE CENTER

1001 SW KLIKITAT WAY, SEATTLE, WA 98134



Spokane Street "Low Bridge"

Spokane E Channel Bridge

WEST SEATTLE BRIDGE

SW Klickitat Way Bridge

Harbor Marina Corporate Center



The information supplied herein is from sources we deem reliable. It is provided without any representation, warranty or guarantee, expressed or implied, as to its accuracy. Prospective Buyer or Tenant should conduct an independent investigation and verification of all matters deemed to be material, including, but not limited to, statements of income and expenses. CONSULT YOUR ATTORNEY, ACCOUNTANT OR OTHER PROFESSIONAL ADVISOR. FLYERS\SEATTLE\HARBOR MARINA CORPORATE PARK/HARBOR MARINA CORPORATE PARK UPDATE

600 108th Avenue NE, Suite 340  
Bellevue, WA 98004  
425 586 5600  
nai-psp.com