

# FOR LEASE HARBOR MARINA CORPORATE CENTER

1001-1021 SW KLUCKITAT WAY, SEATTLE, WA



For more information:

**Bob Swain, CCIM**  
+1 425 586 5622  
bswain@nai-psp.com

**John Vernon**  
+1 425 586 5638  
jvernon@nai-psp.com



# PROPERTY OVERVIEW

## HARBOR MARINA CORPORATE CENTER

1001 SW KLINKITAT WAY, SEATTLE, WA 98134



**Fantastic tenant amenities. Deli on site, storage/warehouse available, recreational moorage available, and access to West Seattle bike path.**



**Wide range of space solutions**



**Excellent location close to Downtown, West Seattle, Alki Beach, Georgetown, and SODO. Easy Access to I5 & SR 99. Adjacent to harbor container terminals.**



**Great views of the Duwamish Waterway**



**Flexible lease terms available**



**Free parking 2/1000 SF**



**Furnished suites available**



**Public transit with in 0.2 miles**



**Call for rates**



**Free parking!!!!**





# BUILDING LOCATIONS HARBOR MARINA CORPORATE CENTER

1001 SW KLINKITAT WAY, SEATTLE, WA 98134



Building C

Building D

Building B

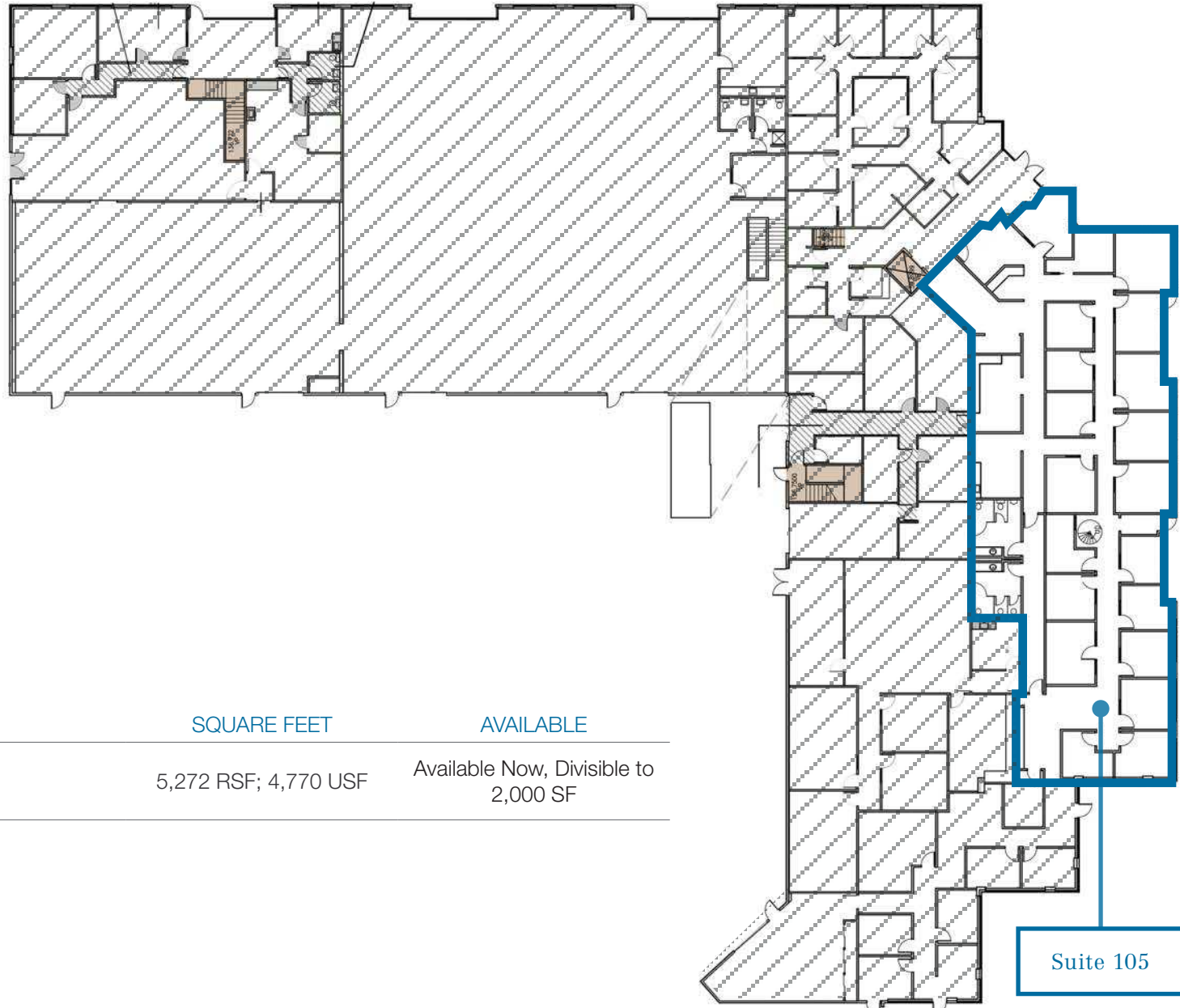
Building A

Building A: 1001 SW Klickitat Way, Seattle, WA

Building B&C: 1011 SW Klickitat Way, Seattle, WA

Building D: 1021 SW Klickitat Way, Seattle, WA

# BUILDING A FLOOR 1



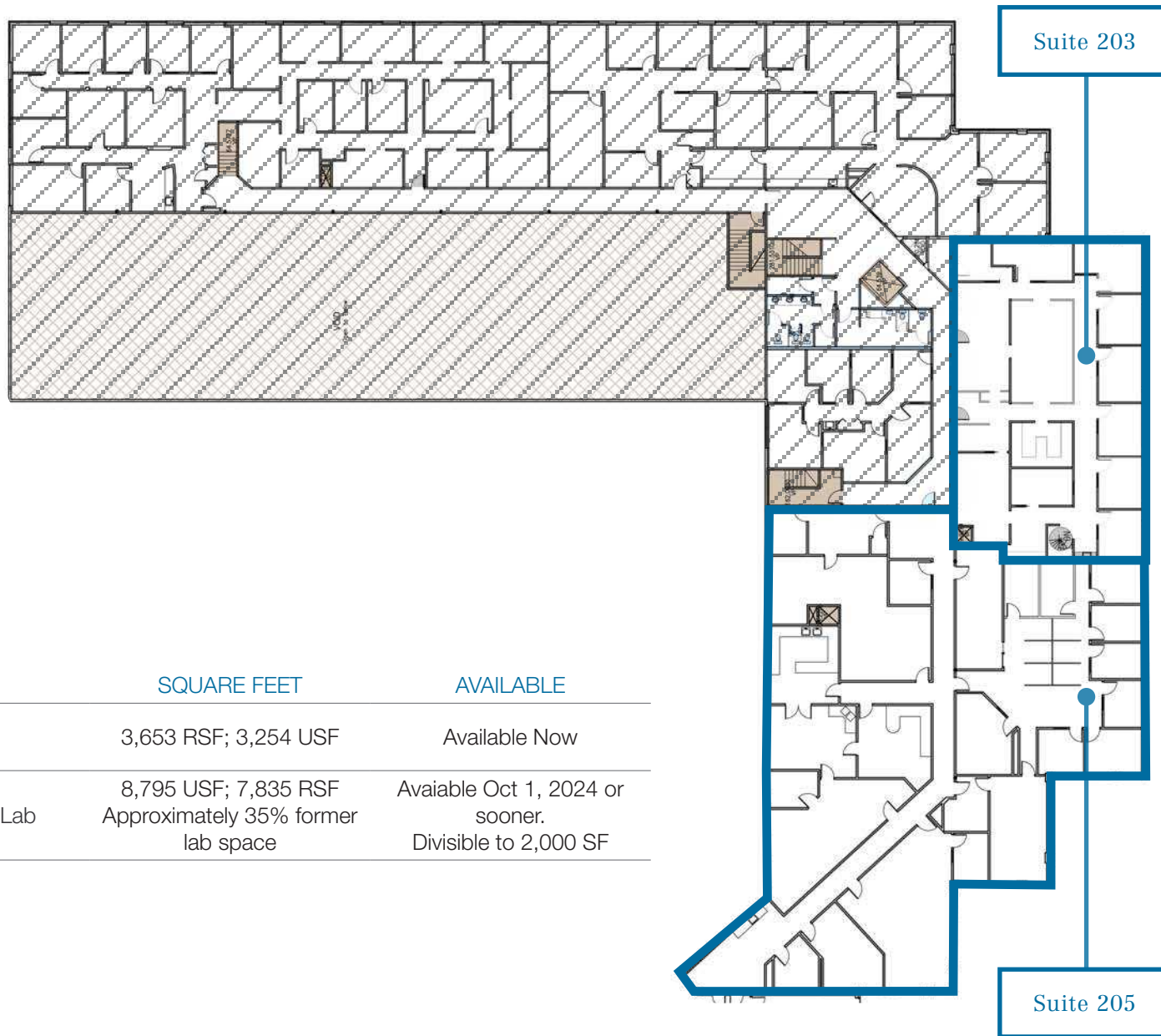
## CURRENT AVAILABILITIES

SUITE	TYPE	SQUARE FEET	AVAILABLE
A-105	Office	5,272 RSF; 4,770 USF	Available Now, Divisible to 2,000 SF

**3D** View Virtual Tour



# BUILDING A FLOOR 2



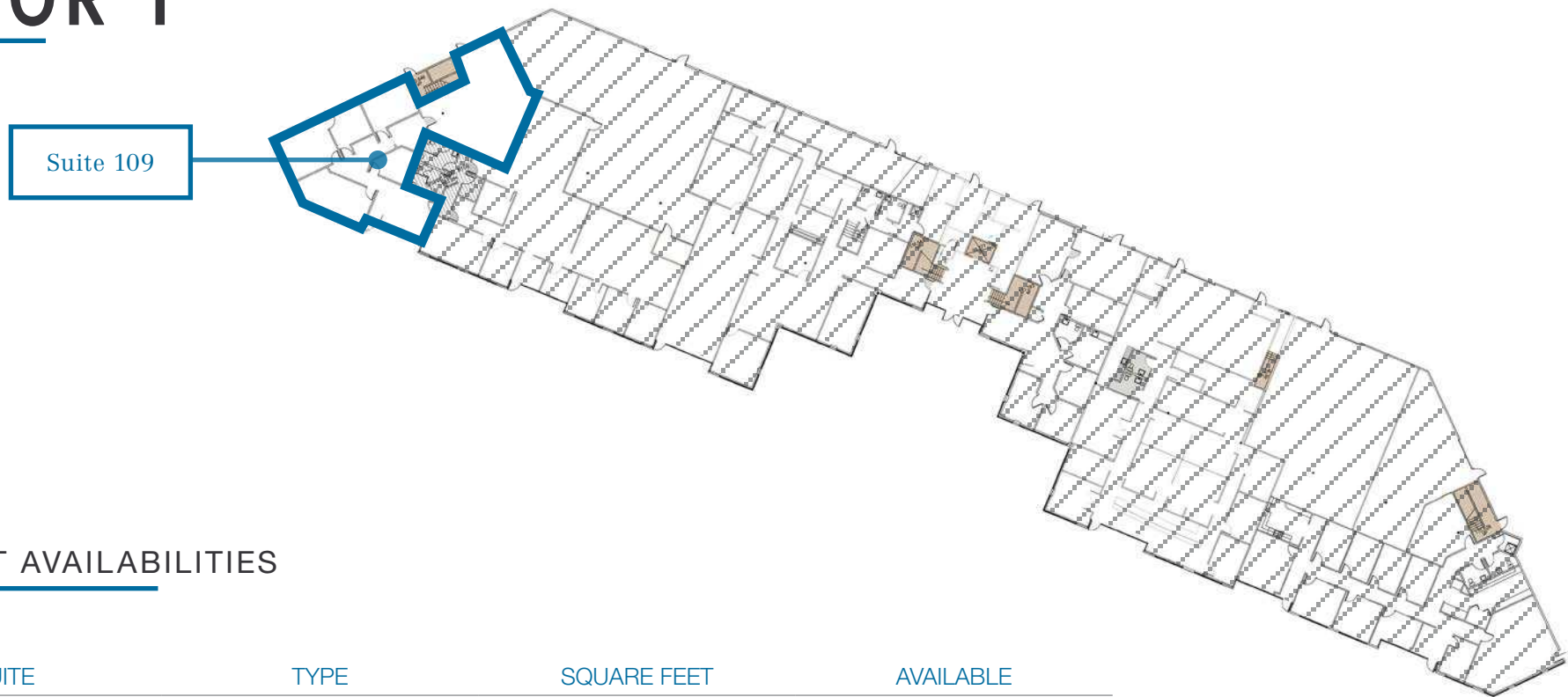
## CURRENT AVAILABILITIES

SUITE	TYPE	SQUARE FEET	AVAILABLE
A-203	Office	3,653 RSF; 3,254 USF	Available Now
A-205	Office/Former Lab	8,795 USF; 7,835 RSF Approximately 35% former lab space	Available Oct 1, 2024 or sooner. Divisible to 2,000 SF

**3D** View Virtual Tour

# BUILDING B/C

## FLOOR 1



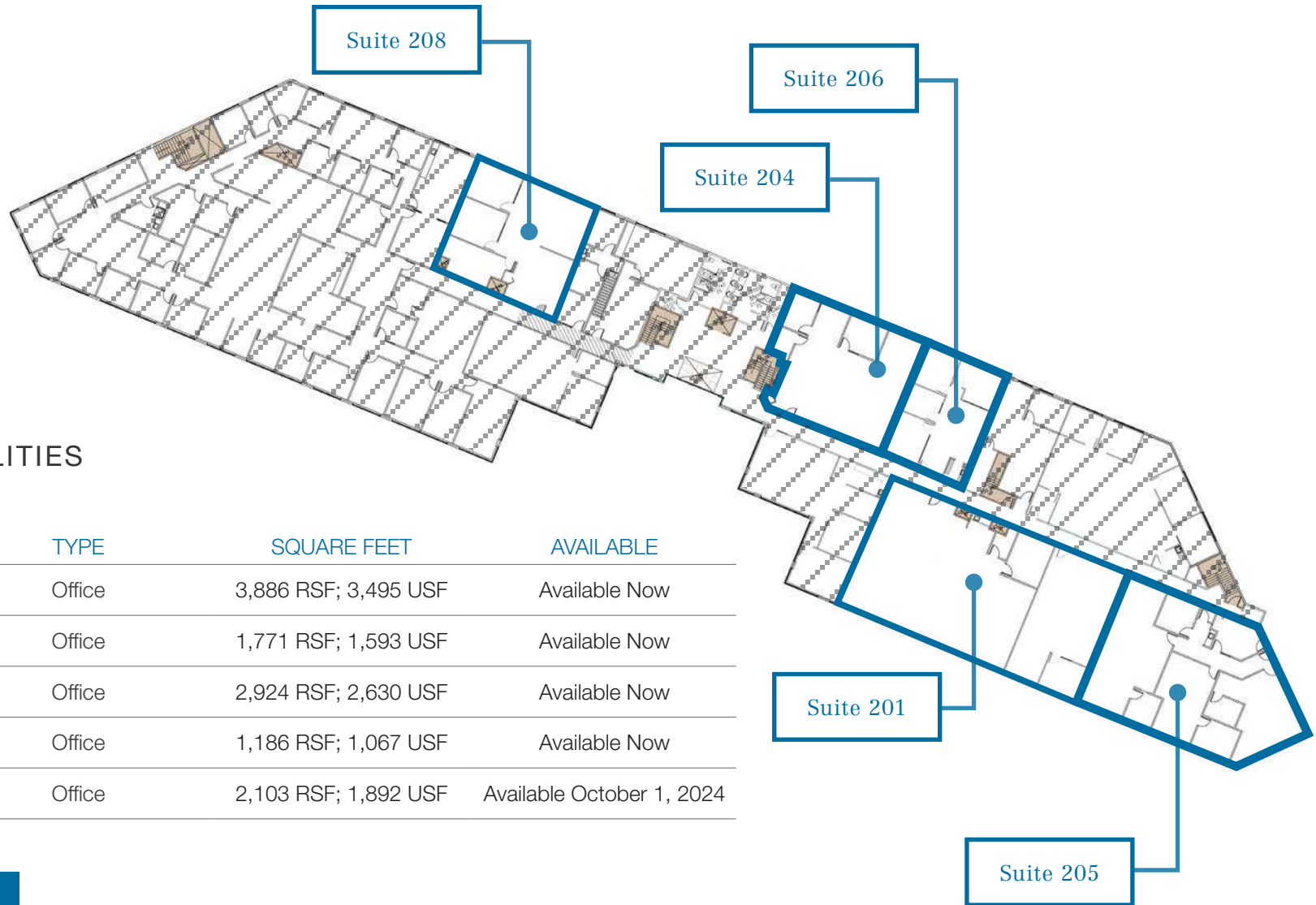
### CURRENT AVAILABILITIES

SUITE	TYPE	SQUARE FEET	AVAILABLE
C-109	Office/ Warehouse	2,700.80 Total RSF; 2,456.11 USF with 977 SF of warehouse	Available Now

**3D** View Virtual Tour

# BUILDING B/C

## FLOOR 2



### CURRENT AVAILABILITIES

SUITE	TYPE	SQUARE FEET	AVAILABLE
B-201	Office	3,886 RSF; 3,495 USF	Available Now
B-204	Office	1,771 RSF; 1,593 USF	Available Now
B-205	Office	2,924 RSF; 2,630 USF	Available Now
B-206	Office	1,186 RSF; 1,067 USF	Available Now
B-208	Office	2,103 RSF; 1,892 USF	Available October 1, 2024

**3D View Virtual Tour**



# LOCATION

## HARBOR MARINA CORPORATE CENTER

1001 SW KLINKITAT WAY, SEATTLE, WA 98134

