

FOR LEASE HARBOR MARINA CORPORATE CENTER

1001-1021 SW KLUCKITAT WAY, SEATTLE, WA



For more information:

Bob Swain, CCIM
+1 425 586 5622
bswain@nai-psp.com

John Vernon
+1 425 586 5638
jvernon@nai-psp.com



PROPERTY OVERVIEW

HARBOR MARINA CORPORATE CENTER

1001 SW KLUCKITAT WAY, SEATTLE, WA 98134



Fantastic tenant amenities. Deli on site, storage/warehouse available, recreational moorage available, and access to West Seattle bike path.



Wide range of space solutions



Excellent location close to Downtown, West Seattle, Alki Beach, Georgetown, and SODO. Easy Access to I5 & SR 99. Adjacent to harbor container terminals.



Great views of the Duwamish Waterway



Flexible lease terms available



Free parking 2/1000 SF



Furnished suites available



Public transit with in 0.2 miles



Call for rates

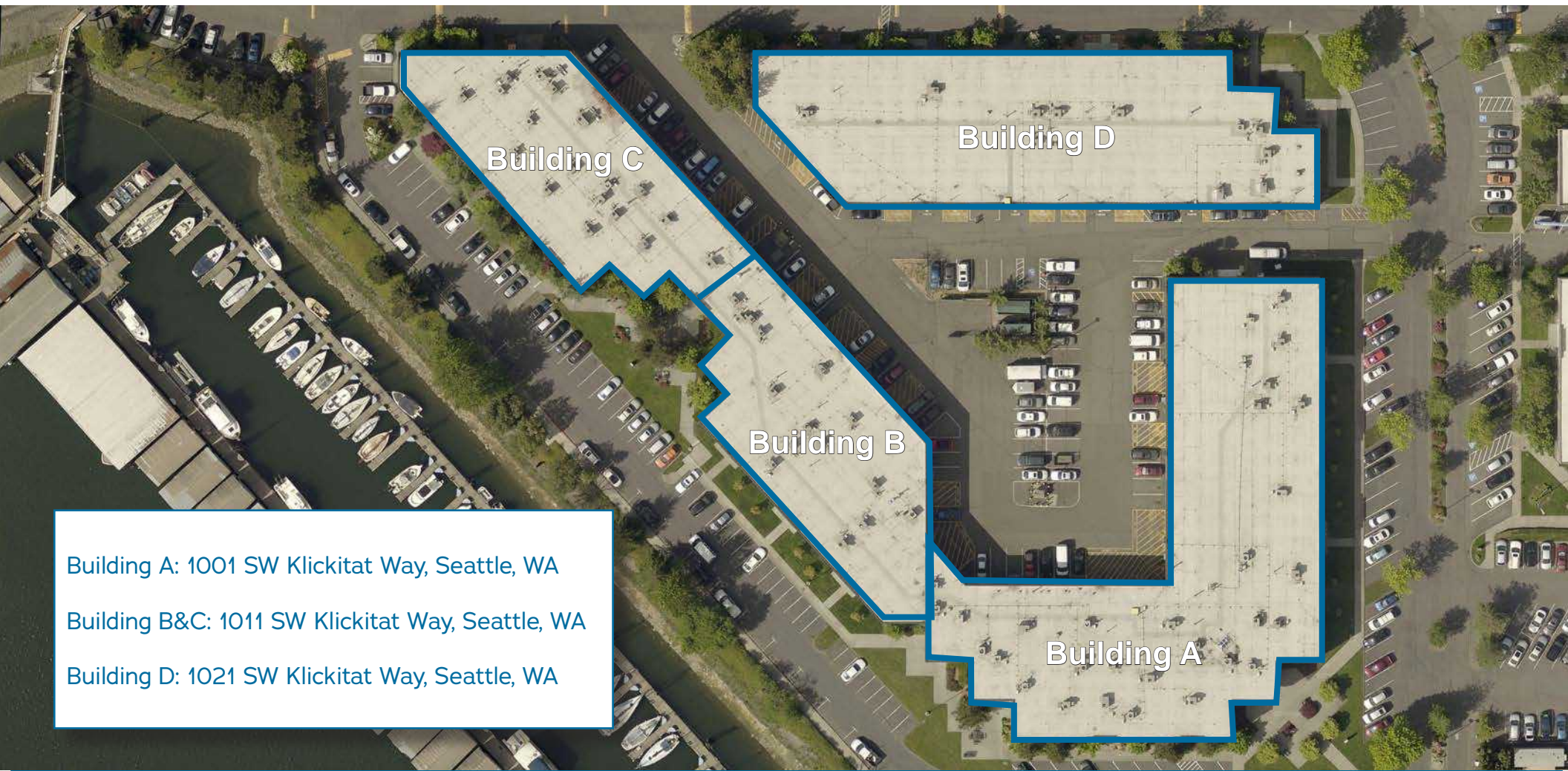


Free parking!!!!



BUILDING LOCATIONS HARBOR MARINA CORPORATE CENTER

1001 SW KLINKITAT WAY, SEATTLE, WA 98134



Building C

Building D

Building B

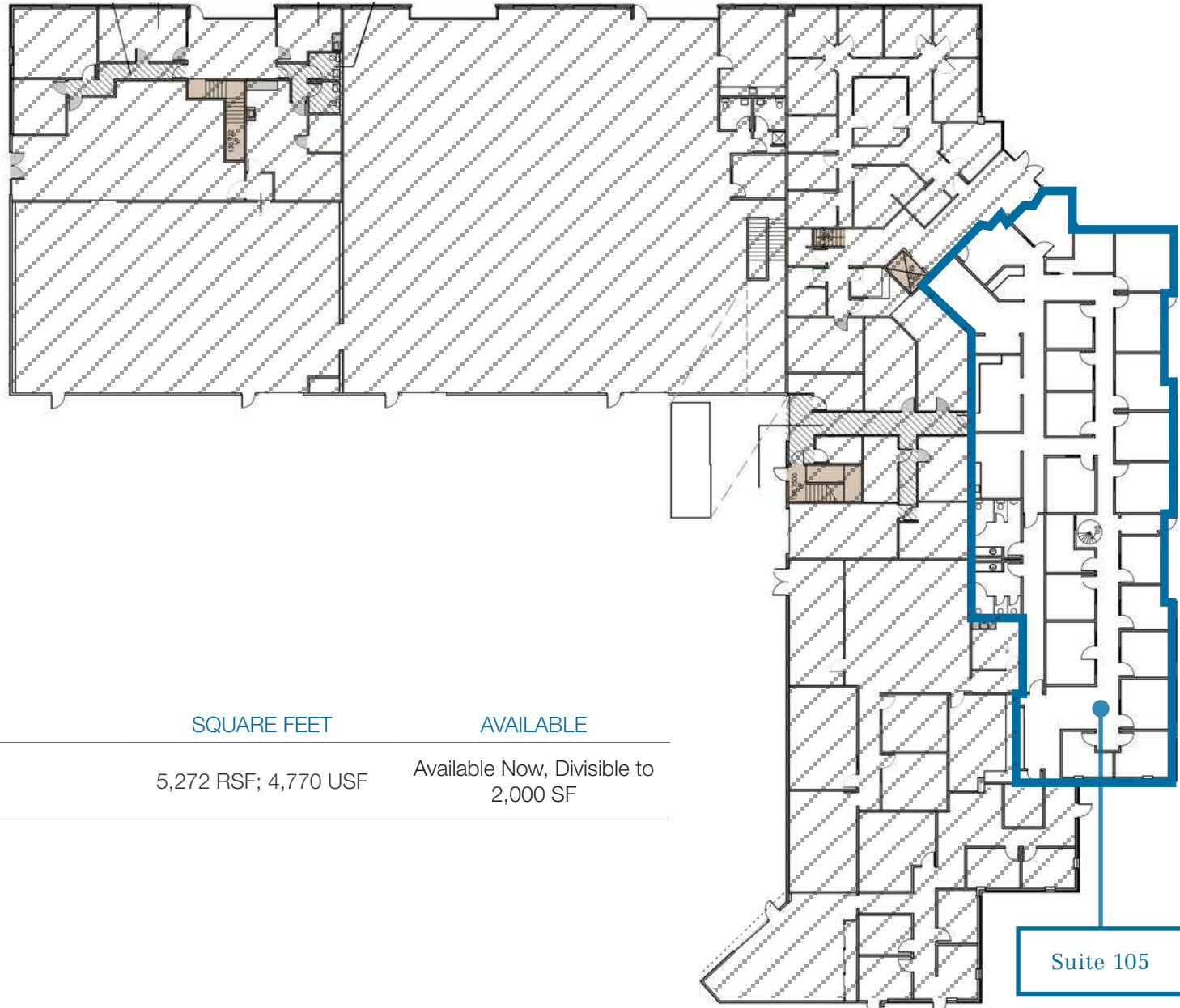
Building A

Building A: 1001 SW Klickitat Way, Seattle, WA

Building B&C: 1011 SW Klickitat Way, Seattle, WA

Building D: 1021 SW Klickitat Way, Seattle, WA

BUILDING A FLOOR 1

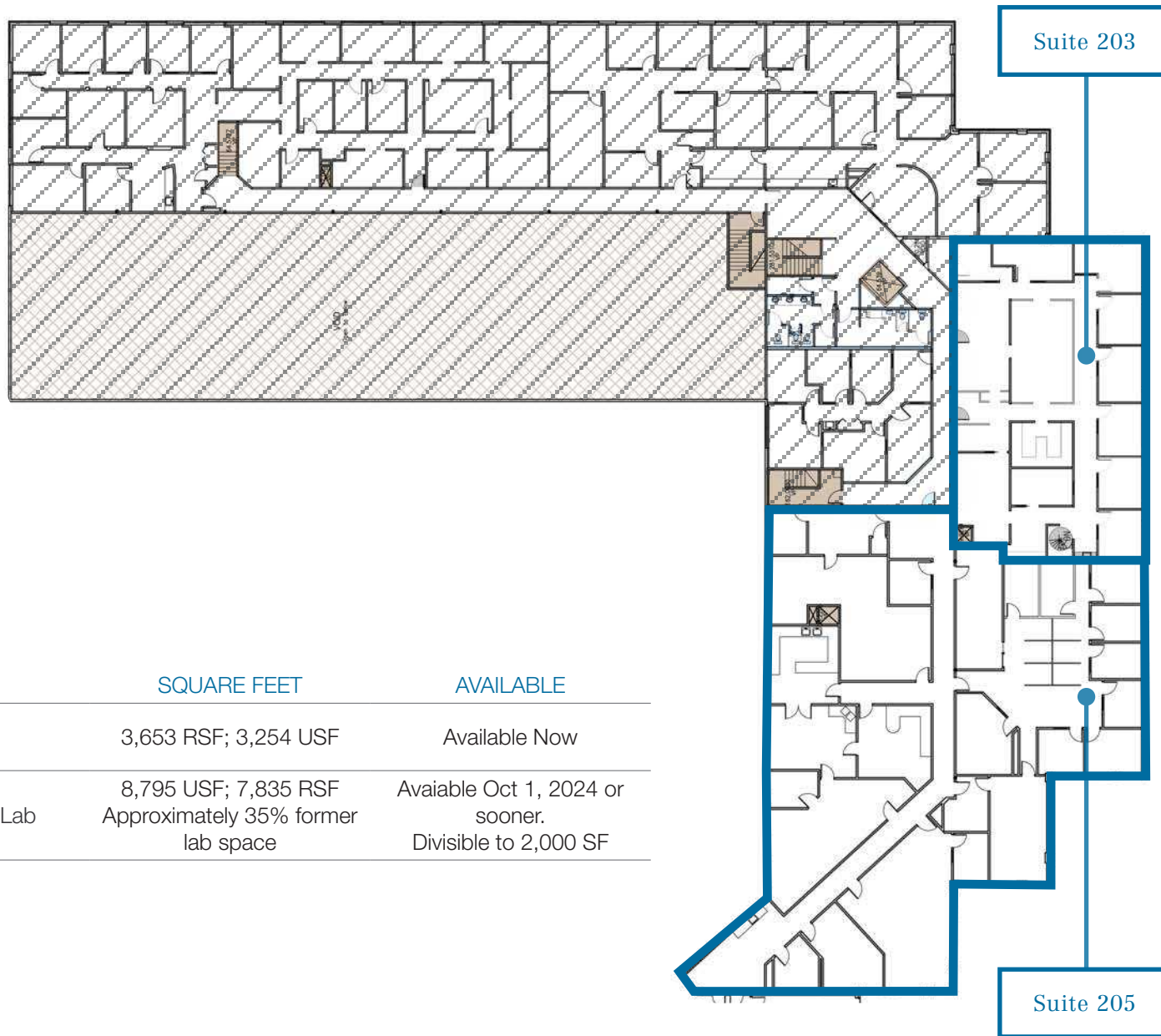


CURRENT AVAILABILITIES

| SUITE | TYPE | SQUARE FEET | AVAILABLE |
|-------|--------|----------------------|--------------------------------------|
| A-105 | Office | 5,272 RSF; 4,770 USF | Available Now, Divisible to 2,000 SF |

[3D View Virtual Tour](#)

BUILDING A FLOOR 2



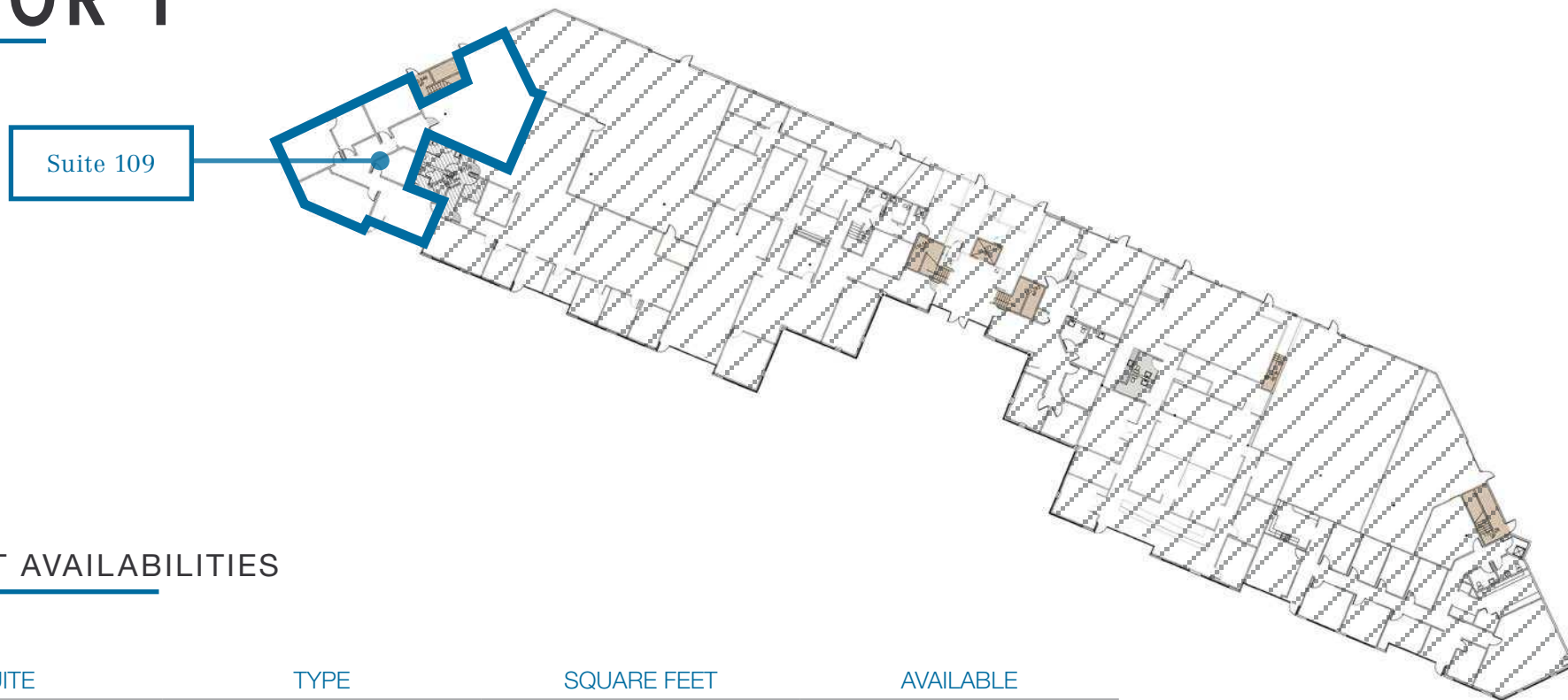
CURRENT AVAILABILITIES

| SUITE | TYPE | SQUARE FEET | AVAILABLE |
|-------|-------------------|--|---|
| A-203 | Office | 3,653 RSF; 3,254 USF | Available Now |
| A-205 | Office/Former Lab | 8,795 USF; 7,835 RSF Approximately 35% former lab space | Available Oct 1, 2024 or sooner. Divisible to 2,000 SF |

3D View Virtual Tour

BUILDING B/C

FLOOR 1



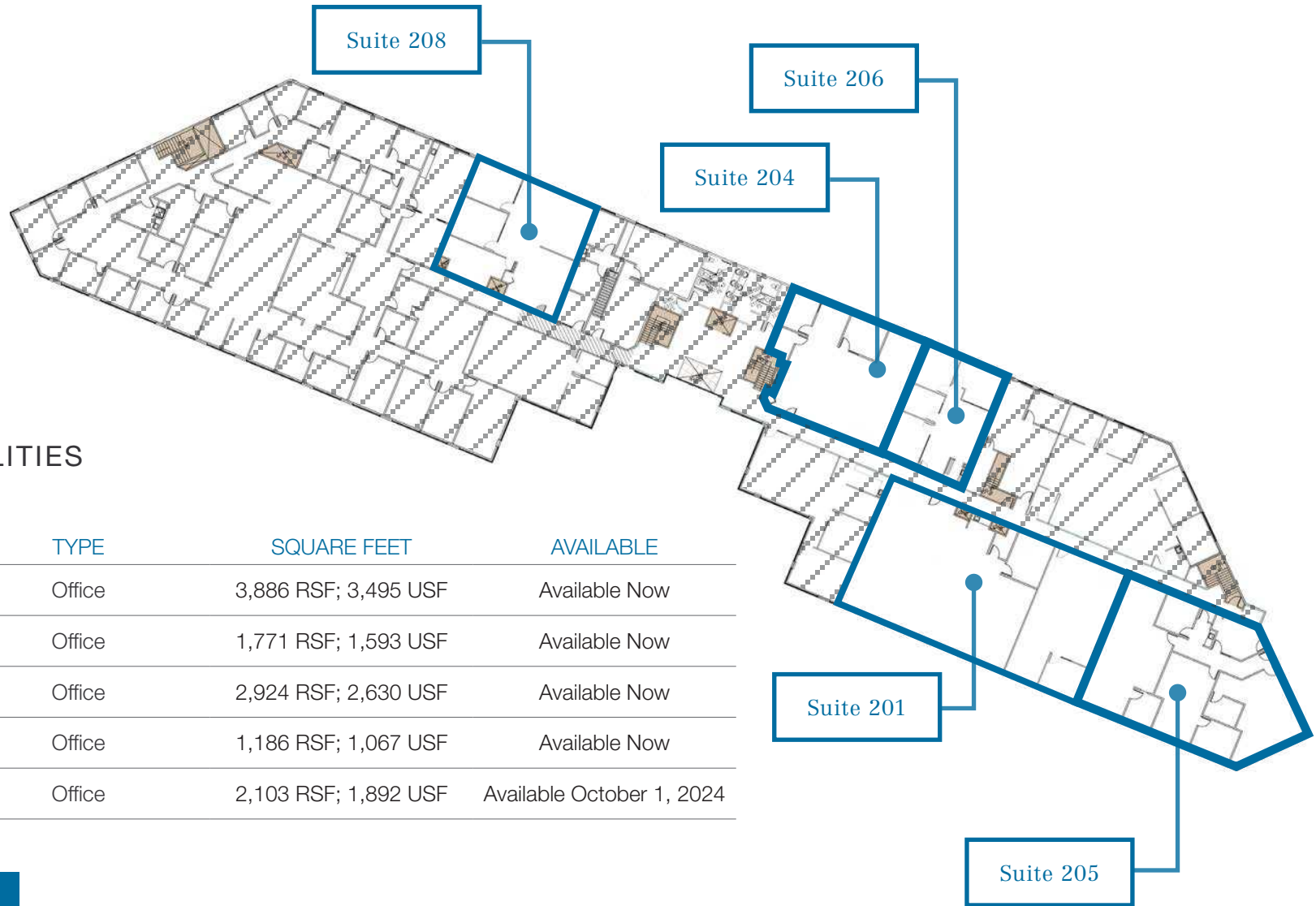
CURRENT AVAILABILITIES

| SUITE | TYPE | SQUARE FEET | AVAILABLE |
|-------|-------------------|---|---------------|
| C-109 | Office/ Warehouse | 2,700.80 Total RSF; 2,456.11 USF with 977 SF of warehouse | Available Now |

[3D View Virtual Tour](#)

BUILDING B/C

FLOOR 2



CURRENT AVAILABILITIES

| SUITE | TYPE | SQUARE FEET | AVAILABLE |
|-------|--------|----------------------|---------------------------|
| B-201 | Office | 3,886 RSF; 3,495 USF | Available Now |
| B-204 | Office | 1,771 RSF; 1,593 USF | Available Now |
| B-205 | Office | 2,924 RSF; 2,630 USF | Available Now |
| B-206 | Office | 1,186 RSF; 1,067 USF | Available Now |
| B-208 | Office | 2,103 RSF; 1,892 USF | Available October 1, 2024 |

3D View Virtual Tour

LOCATION

HARBOR MARINA CORPORATE CENTER

1001 SW KLIKITAT WAY, SEATTLE, WA 98134



Spokane Street "Low Bridge"

Spokane E Channel Bridge

WEST SEATTLE BRIDGE

SW Klickitat Way Bridge

Harbor Marina Corporate Center



The information supplied herein is from sources we deem reliable. It is provided without any representation, warranty or guarantee, expressed or implied, as to its accuracy. Prospective Buyer or Tenant should conduct an independent investigation and verification of all matters deemed to be material, including, but not limited to, statements of income and expenses. CONSULT YOUR ATTORNEY, ACCOUNTANT OR OTHER PROFESSIONAL ADVISOR. FLYERS\SEATTLE\HARBOR MARINA CORPORATE PARK/HARBOR MARINA CORPORATE PARK UPDATE

600 108th Avenue NE, Suite 340
Bellevue, WA 98004
425 586 5600
nai-psp.com