

SUBLEASE

# LINCOLN SQUARE SOUTH

10400 NE 8TH | BELLEVUE, WA

**BRODERICK**  
GROUP

**17,786 - 119,898 SF**

AVAILABLE 2/1/26

SUBLEASE

# LINCOLN SQUARE SOUTH

## AVAILABILITY

FLOOR 29:  
25,528 SF

FLOOR 28:  
25,528 SF

FLOOR 27:  
25,528 SF

FLOOR 26:  
25,528 SF

FLOOR 3:  
17,786 SF

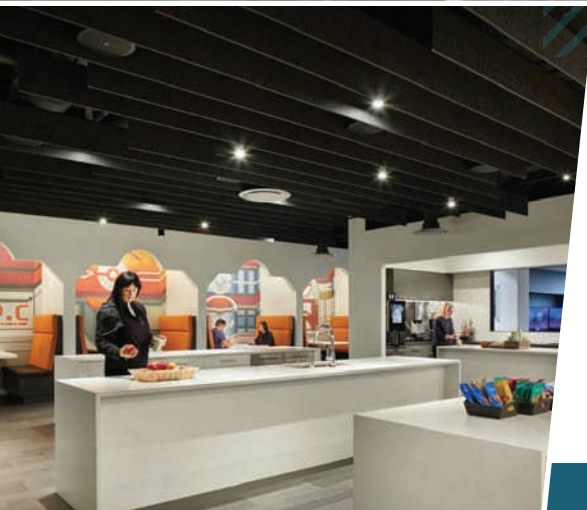


## SUBLEASE

- + 119,898 SF
- + AVAILABLE:  
February 1, 2026
- + EXPIRATION:  
November 30, 2032
- + RATE:  
Negotiable
- + Fully Furnished, plug  
and play sublease\*
- + Iconic view space,  
internal stairwell  
connecting floors 26-29
- + PARKING:  
2.5/1,000 RSF

\*FF&E may be made available to a subtenant contingent on sublease economics.

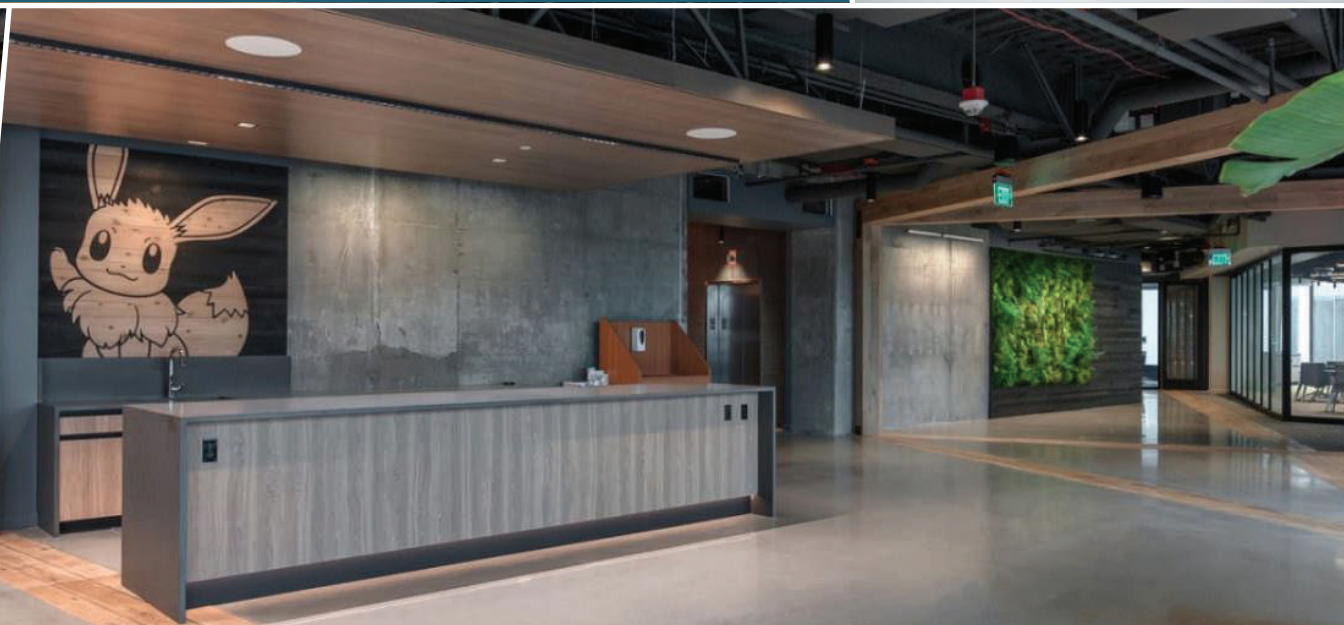
The information contained herein has been given to us by the owner or sources which we deem reliable. We have no reason to doubt its accuracy, but we do not guarantee it. Prospective tenants should carefully verify all information contained herein.



SUBLEASE

# LINCOLN SQUARE SOUTH

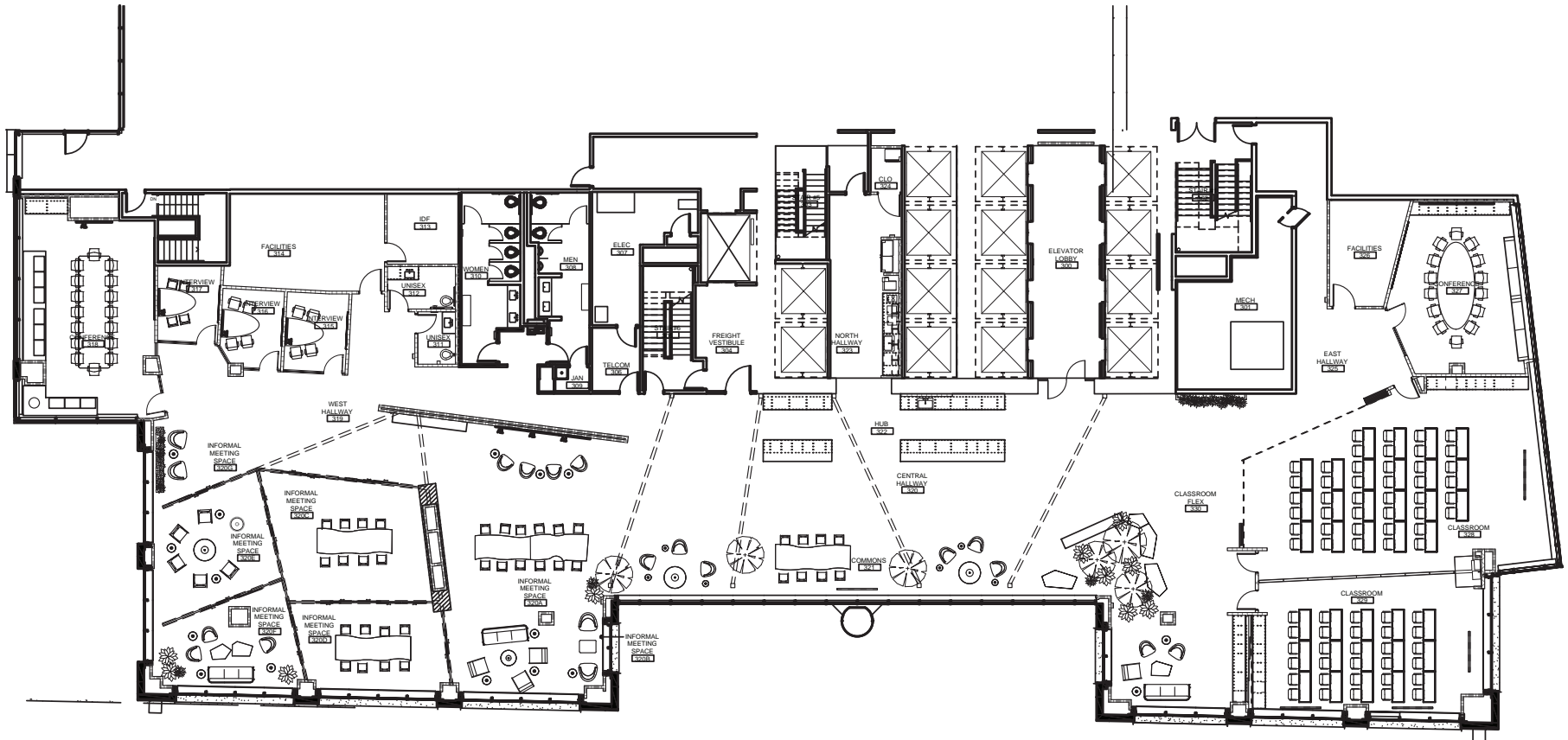
+ BELLEVUE'S PREMIER OFFICE COMPLEX +



SUBLEASE

# LINCOLN SQUARE SOUTH

FLOOR 3 | 17,786 SF | AVAILABLE 2/1/2026



GRANT YERKE | 425.646.5264 | yerke@broderickgroup.com

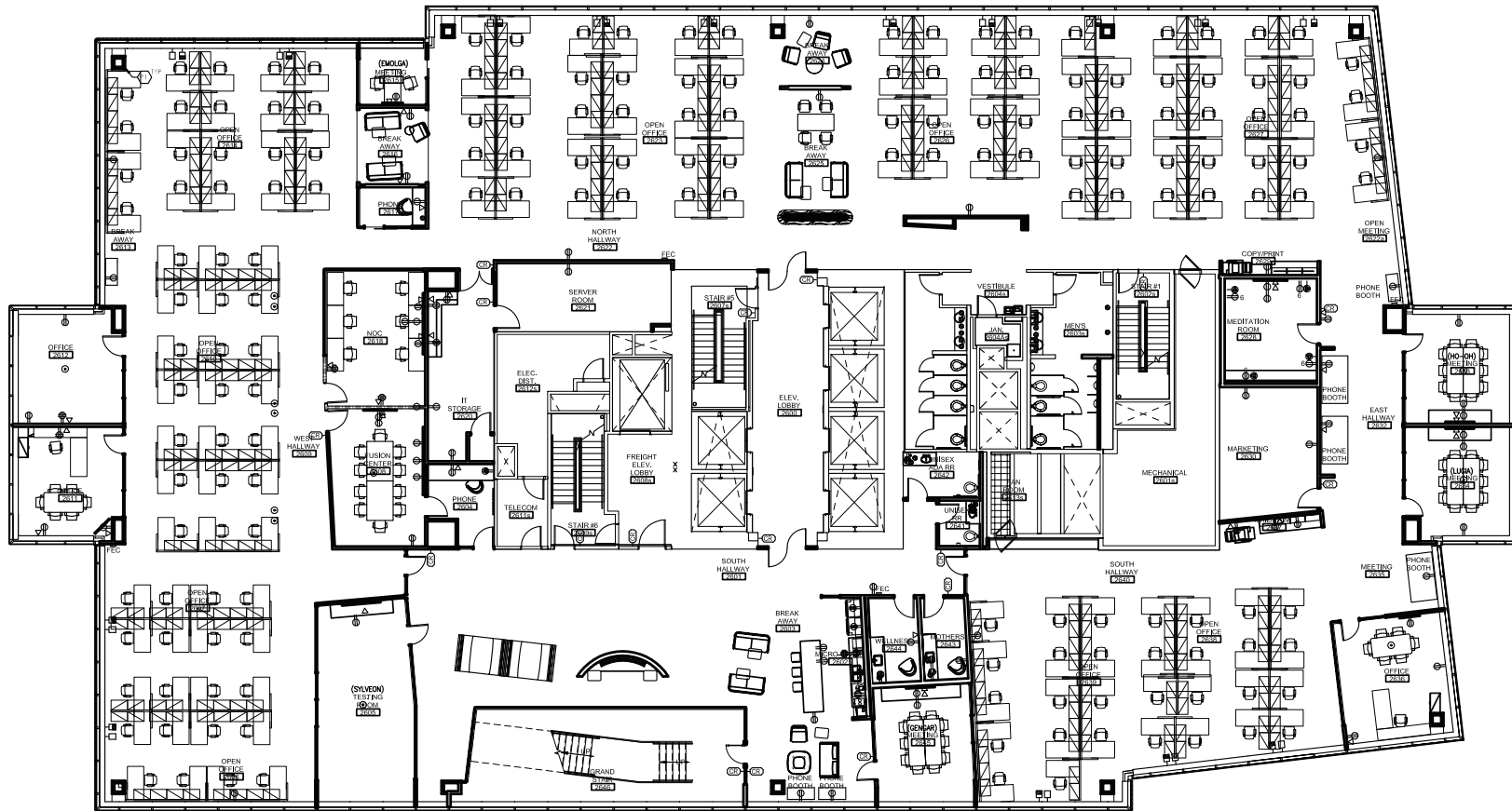
**BRODERICK**  
• GROUP •

10400 NE 8TH  
BELLEVUE, WA

SUBLEASE

# LINCOLN SQUARE SOUTH

FLOOR 26 | 25,528 SF | AVAILABLE 2/1/2026



GRANT YERKE | 425.646.5264 | yerke@broderickgroup.com



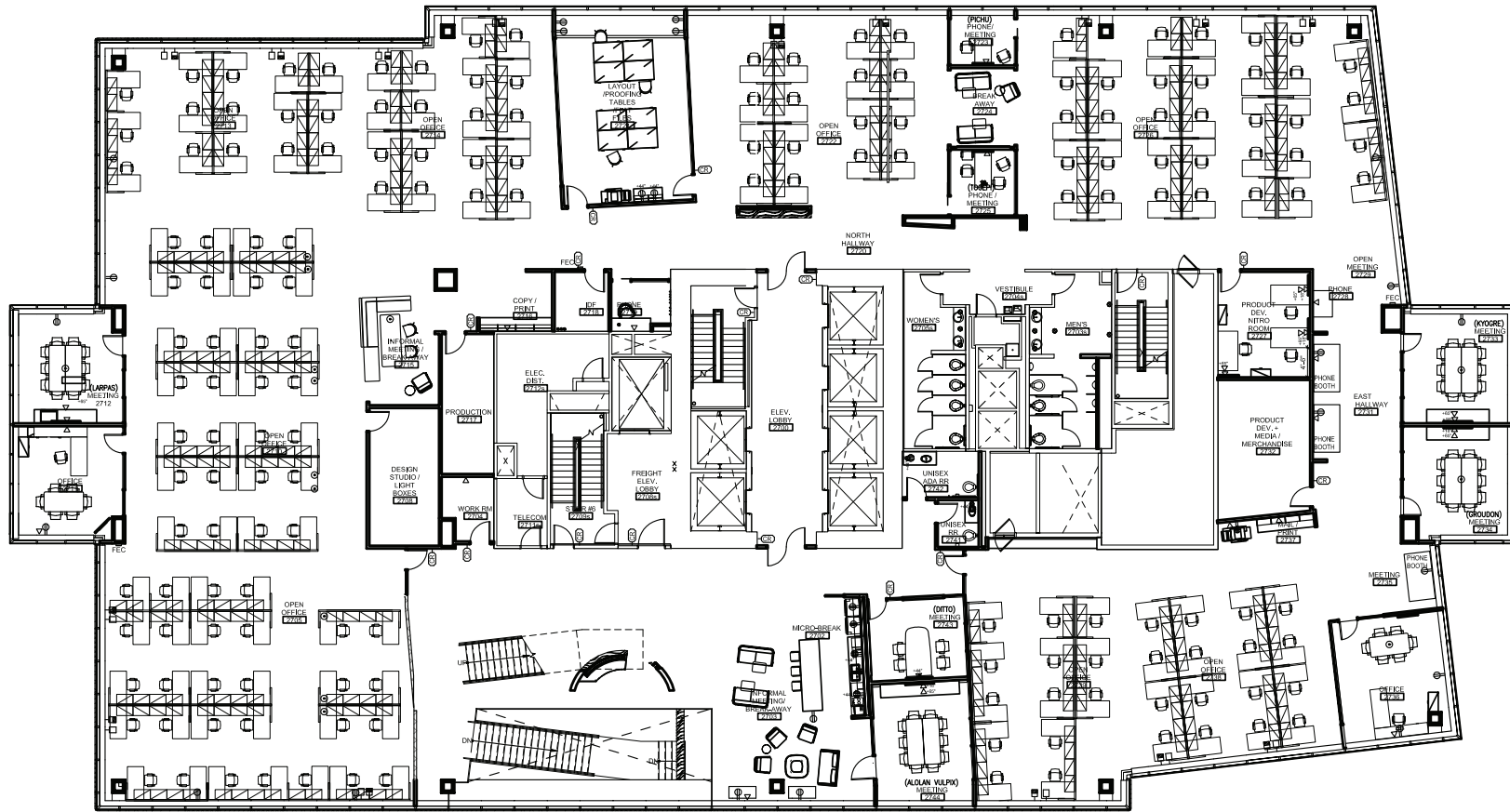
10400 NE 8TH  
BELLEVUE, WA



SUBLEASE

# LINCOLN SQUARE SOUTH

FLOOR 27 | 25,528 SF | AVAILABLE 2/1/2026



GRANT YERKE | 425.646.5264 | yerke@broderickgroup.com

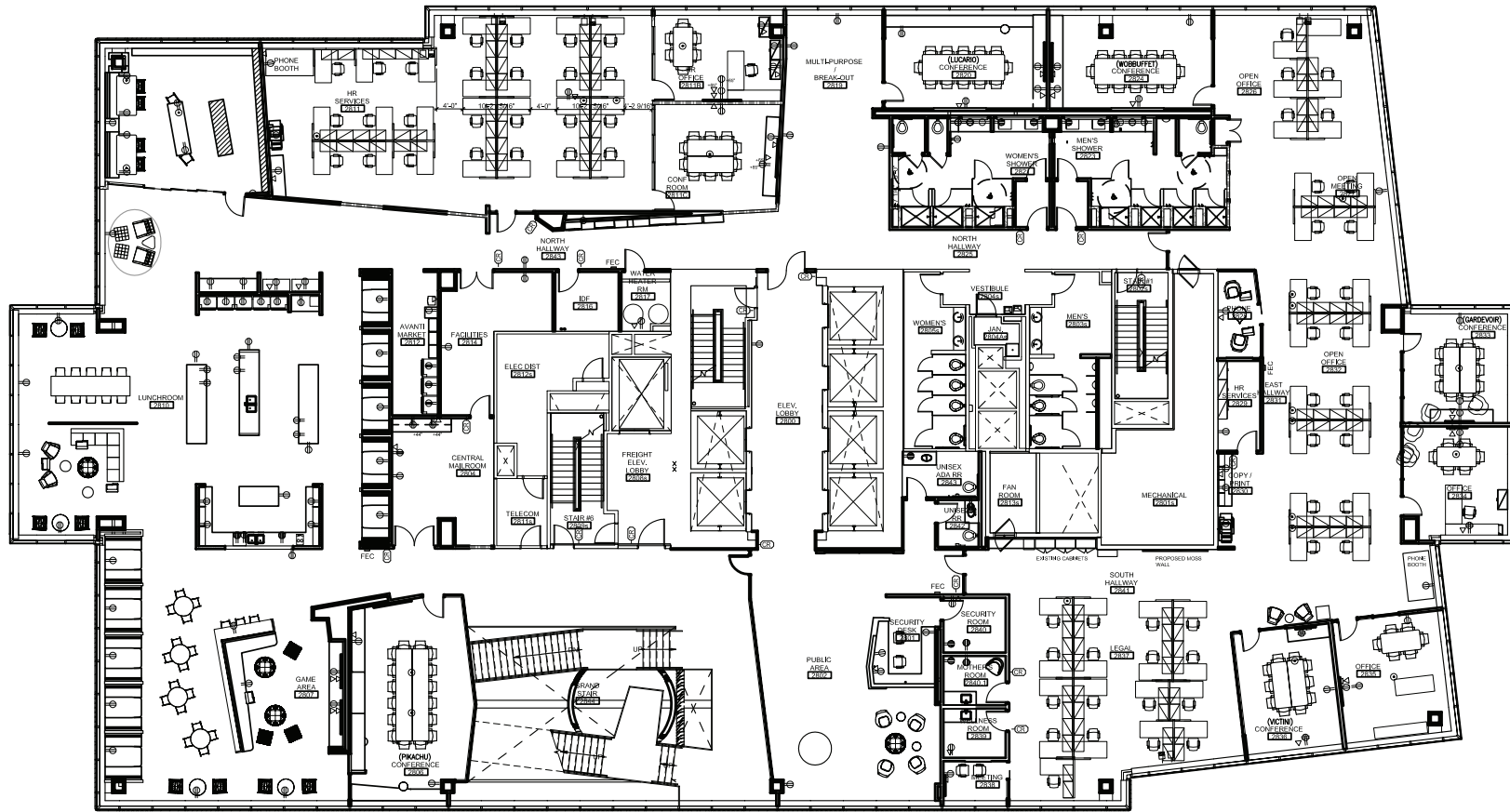


10400 NE 8TH  
BELLEVUE, WA

SUBLEASE

# LINCOLN SQUARE SOUTH

FLOOR 28 | 25,528 SF | AVAILABLE 2/1/2026



GRANT YERKE | 425.646.5264 | yerke@broderickgroup.com



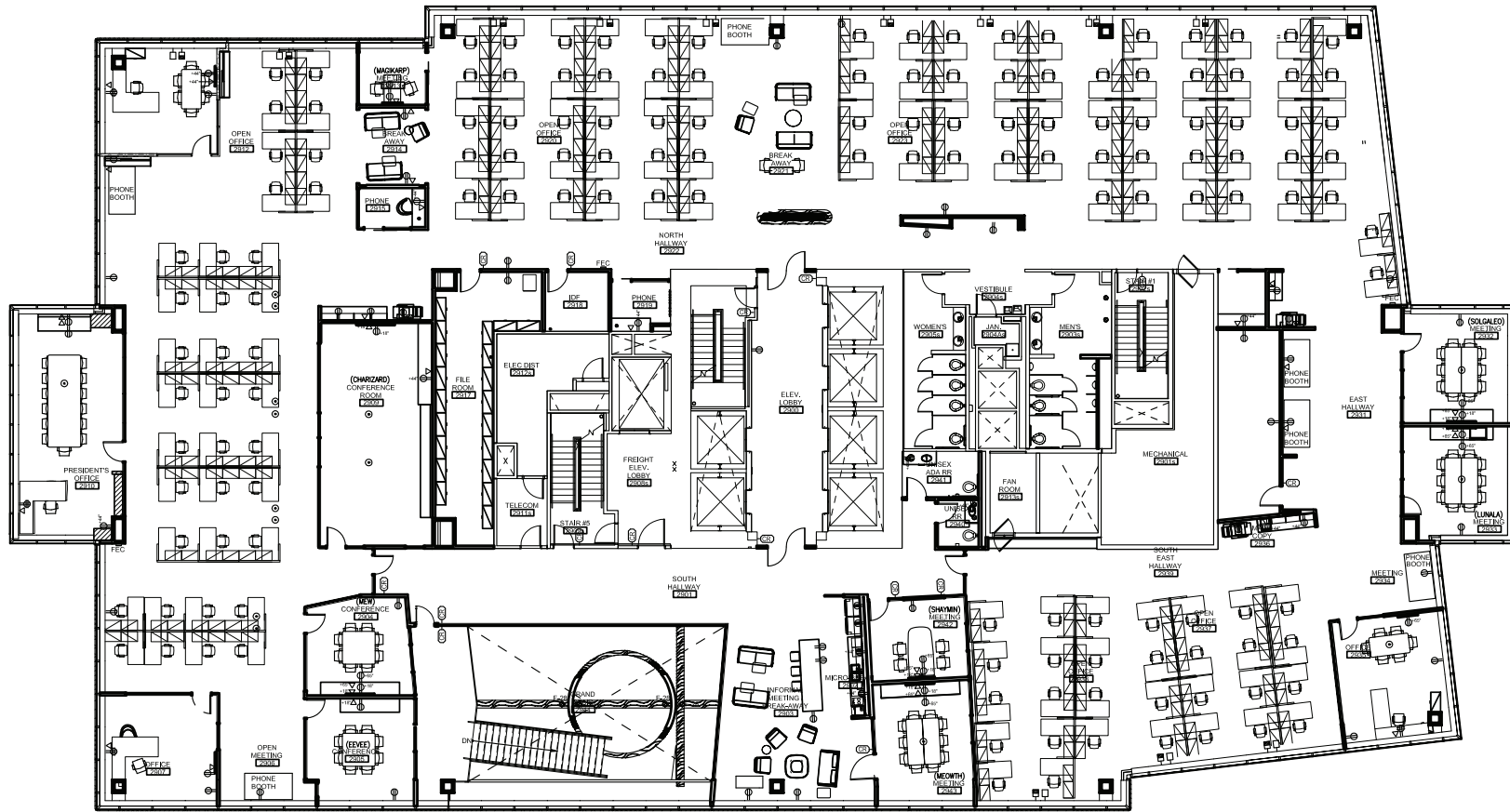
10400 NE 8TH  
BELLEVUE, WA



SUBLEASE

# LINCOLN SQUARE SOUTH

FLOOR 29 | 25,528 SF | AVAILABLE 2/1/2026



GRANT YERKE | 425.646.5264 | yerke@broderickgroup.com



10400 NE 8TH  
BELLEVUE, WA

