

TIGER MOUNTAIN PROFESSIONAL CENTER

FOR LEASE | 14401 ISSAQUAH-HOBART ROAD SE | ISSAQUAH, WA 98027



WCCR

West Coast Commercial Realty

Jaxson Mauer

Commercial Sales & Leasing

425.375.3550

jaxson@wccommercialrealty.com

Tyler Barnes

Broker, Sales and Leasing

425.406.0808

tylerb@wccommercialrealty.com

www.wccommercialrealty.com

FOR LEASE

Tiger Mountain Professional Center

14401 ISSAQUAH-HOBART ROAD SE, ISSAQUAH, WA 98027

- **OUTSTANDING** traffic volume with high visibility from Hobart Road
- **Located on the main thoroughfare** connecting Highway 18 to Issaquah
- **Generous parking**
- **EASY ACCESS** to Highway 18 and Issaquah

AVAILABILITIES

Suite	Size	Availability
Suite 104	875 SF	\$30/SF FS
Suite 205	1,839 SF	\$25/SF FS

Jaxson Mauer

Commercial Sales & Leasing

425.375.3550

jaxson@wccommercialrealty.com

Tyler Barnes

Broker, Sales and Leasing

425.406.0808

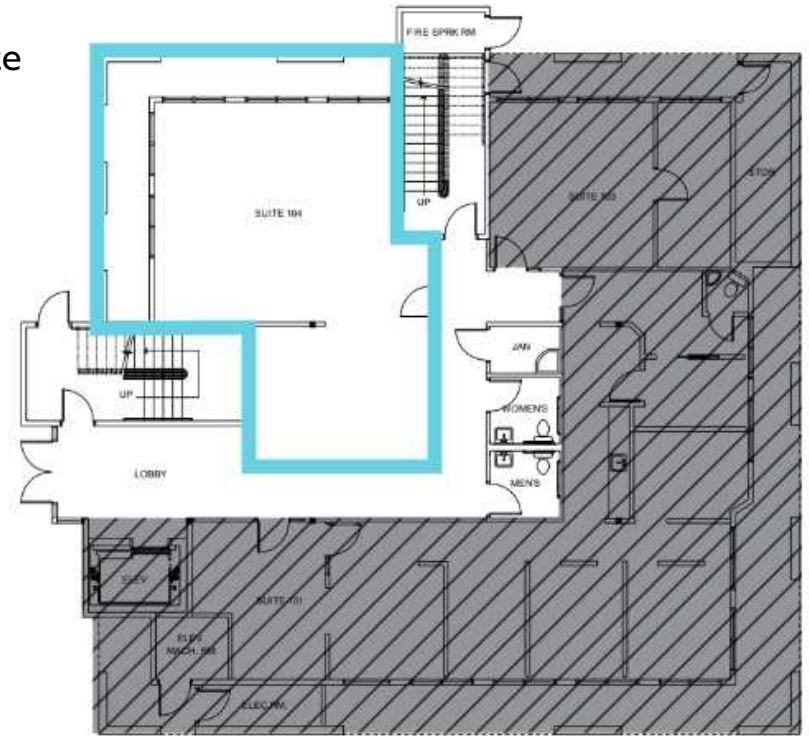
tylerb@wccommercialrealty.com

WCCR

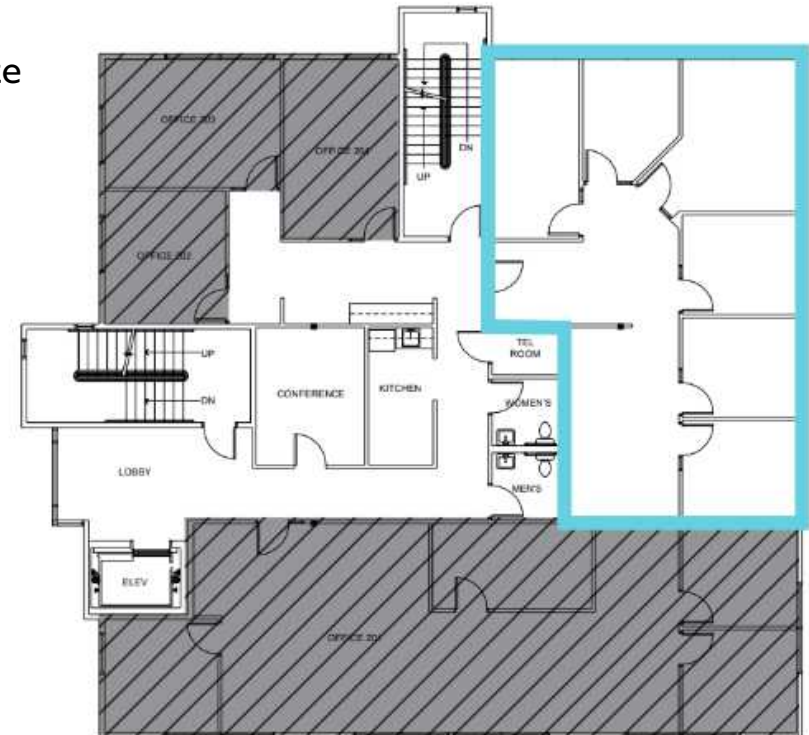
West Coast Commercial Realty

www.wccommercialrealty.com

Suite
104



Suite
205



DEMOGRAPHICS

TOTAL POPULATION

1-Mile: 1,230
 3-Mile: 6,678
 5-Mile: 37,513

AVERAGE HOUSEHOLD INCOME

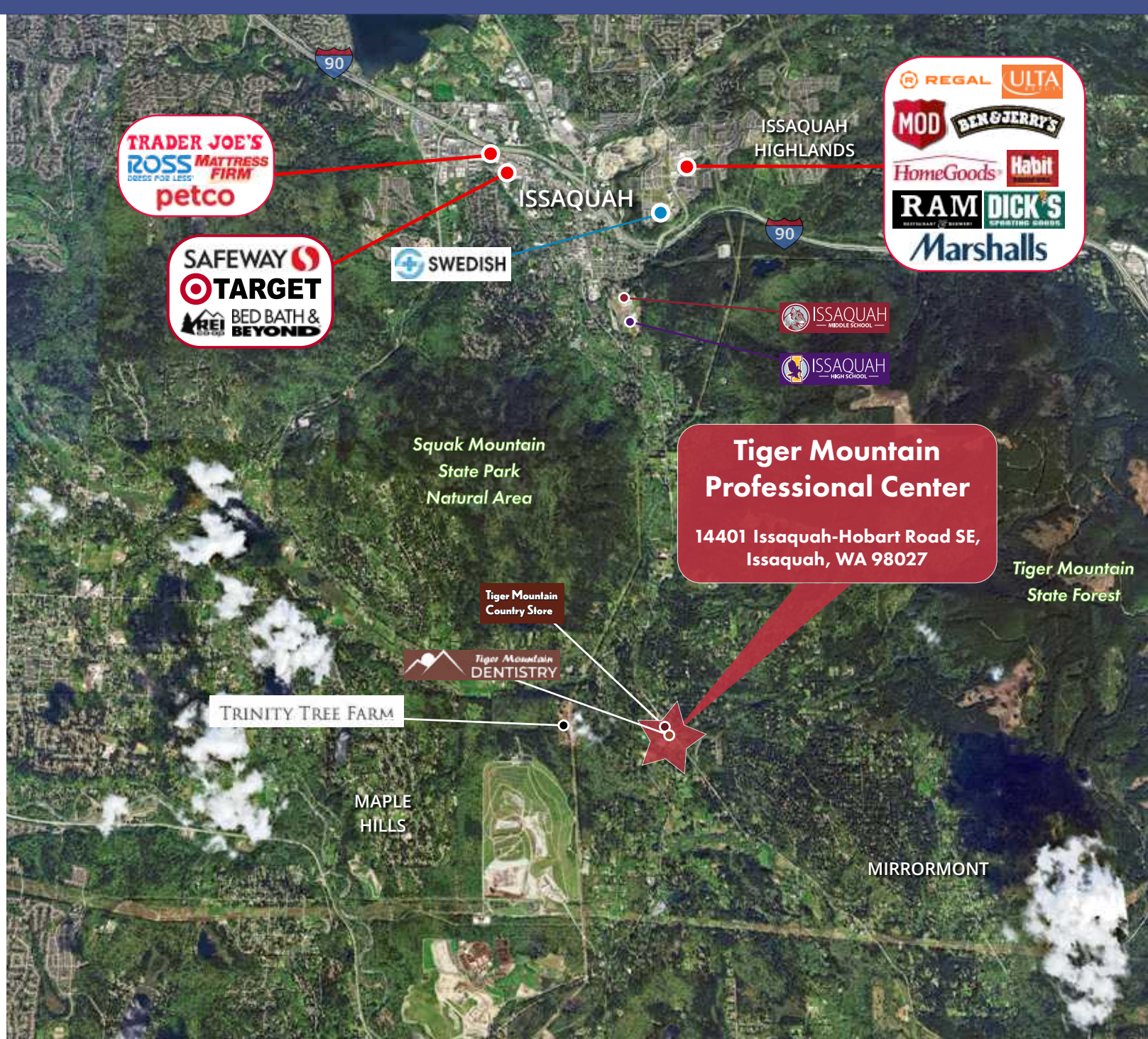
1-Mile: \$186,607
 3-Mile: \$172,855
 5-Mile: \$157,732

HOUSEHOLDS

1-Mile: 445
 3-Mile: 2,394
 5-Mile: 14,258

TRAFFIC COUNTS

16,000+
 Vehicles per day
 @ Issaquah Hobart Rd SE
 & 233rd Way SESW



FOR LEASE

Tiger Mountain Professional Center

14401 ISSAQUAH-HOBART ROAD SE,
ISSAQUAH, WA 98027

Jaxson Maurer

425.375.3550

jaxson@wcccommercialrealty.com

Tyler Barnes

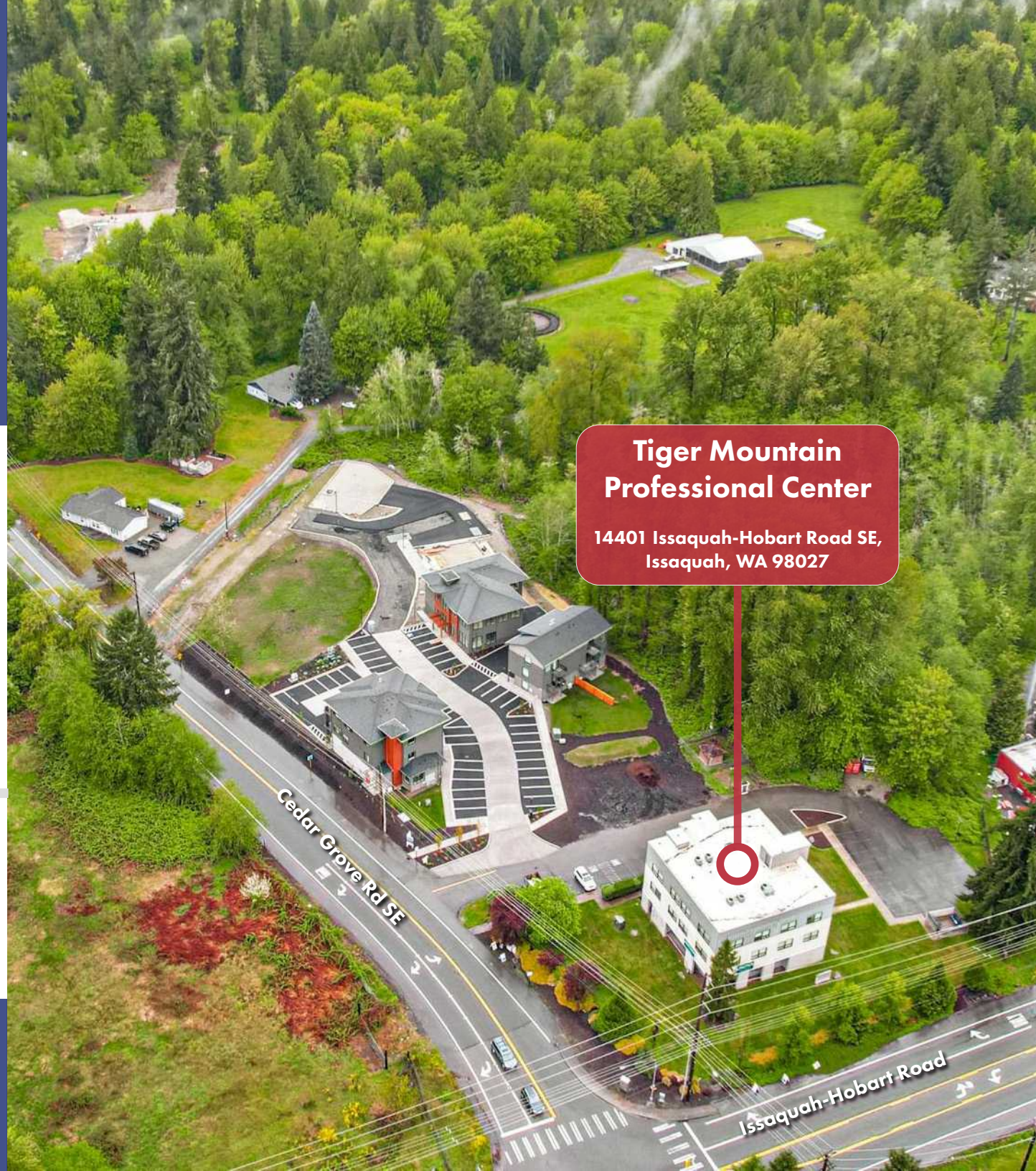
425.406.0808

tylerb@wcccommercialrealty.com

WCCR

West Coast Commercial Realty

DISCLAIMER: The above information has been secured from sources believed to be reliable, however, no representations are made to its accuracy. Prospective tenants or buyers should consult their professional advisors and conduct their own independent investigation. Site plan and configuration are subject to change. Properties are subject to change in price and/or availability without notice. West Coast Commercial Realty, LLC



**Tiger Mountain
Professional Center**

14401 Issaquah-Hobart Road SE,
Issaquah, WA 98027