



Full 22nd Floor:  
17,969 RSF for Sublease

# City Center Bellevue

500 108th Ave NE, Bellevue, WA 98004

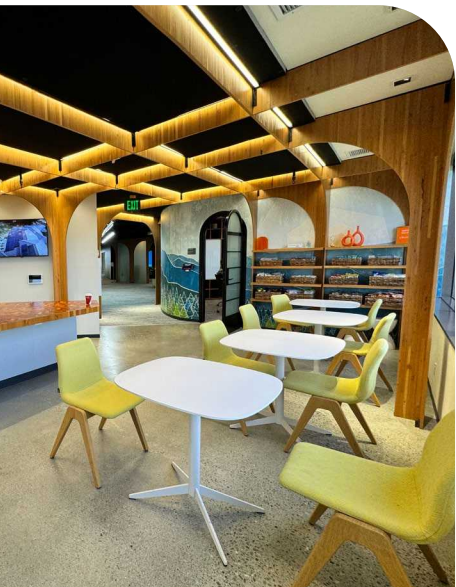
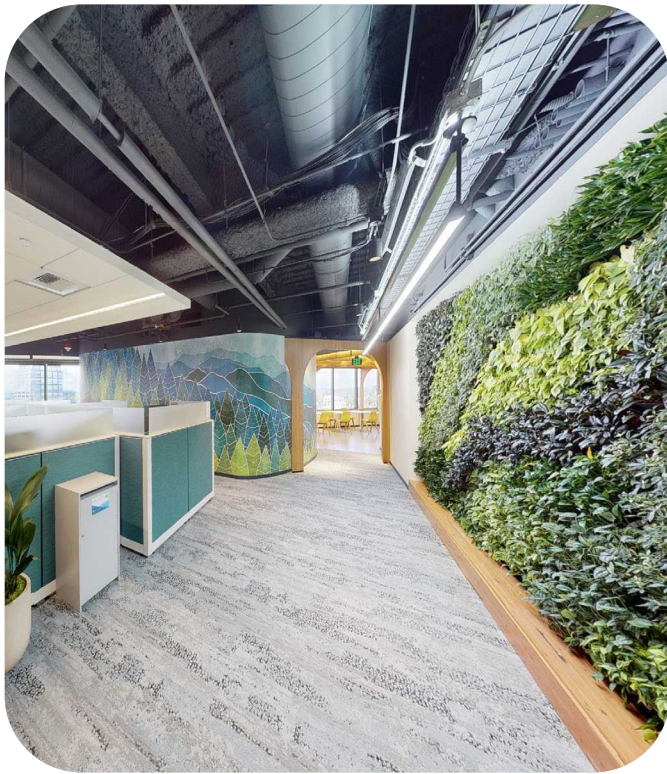
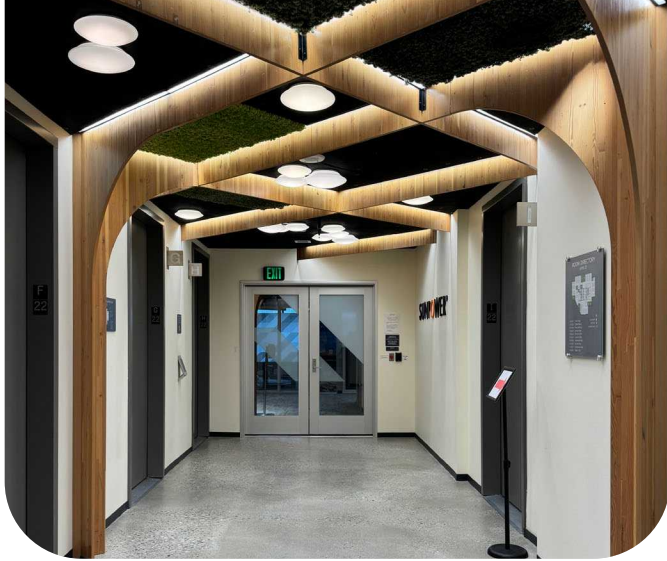
**Colliers**

**Connor McClain**  
Senior Vice President  
Mob +1 425 785 5660  
connor.mcclain@colliers.com

**Jeff Chaney, SIOR**  
Executive Vice President  
Mob +1 425 468 0703  
jeff.chaney@colliers.com

**Joe Conner**  
Senior Associate  
Mob +1 206 223 1423  
joe.conner@colliers.com







# City Center Bellevue

**22nd Floor: 17,969 RSF**

Lease Expiration: 12/31/2027



Available now



Furniture available, plug and play space



High-end, Class A finishes



Abundant natural light



Open work spaces with living green walls

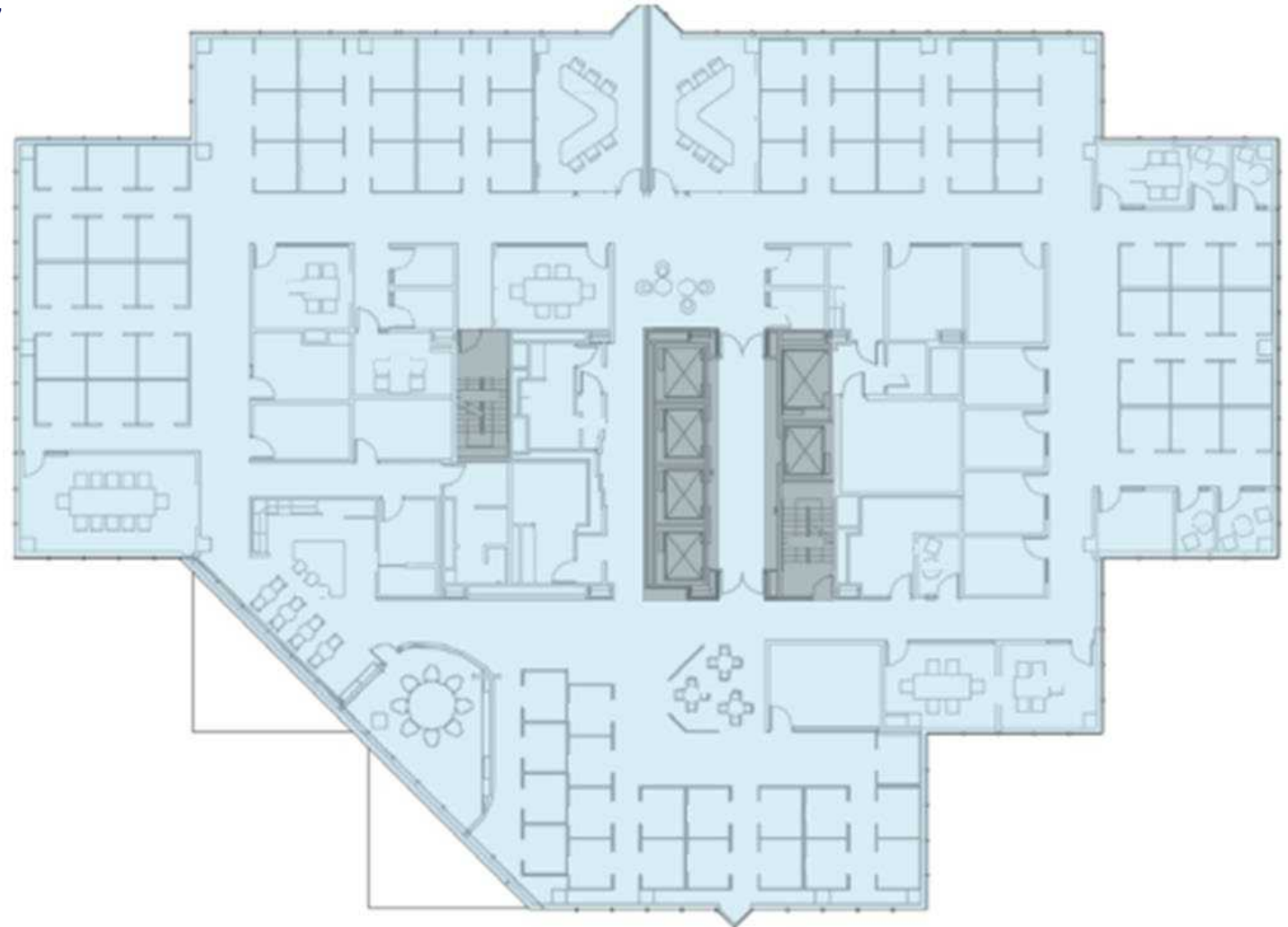


35 parking stalls available



Tenant improvement allowance available

[View Virtual Tour](#)

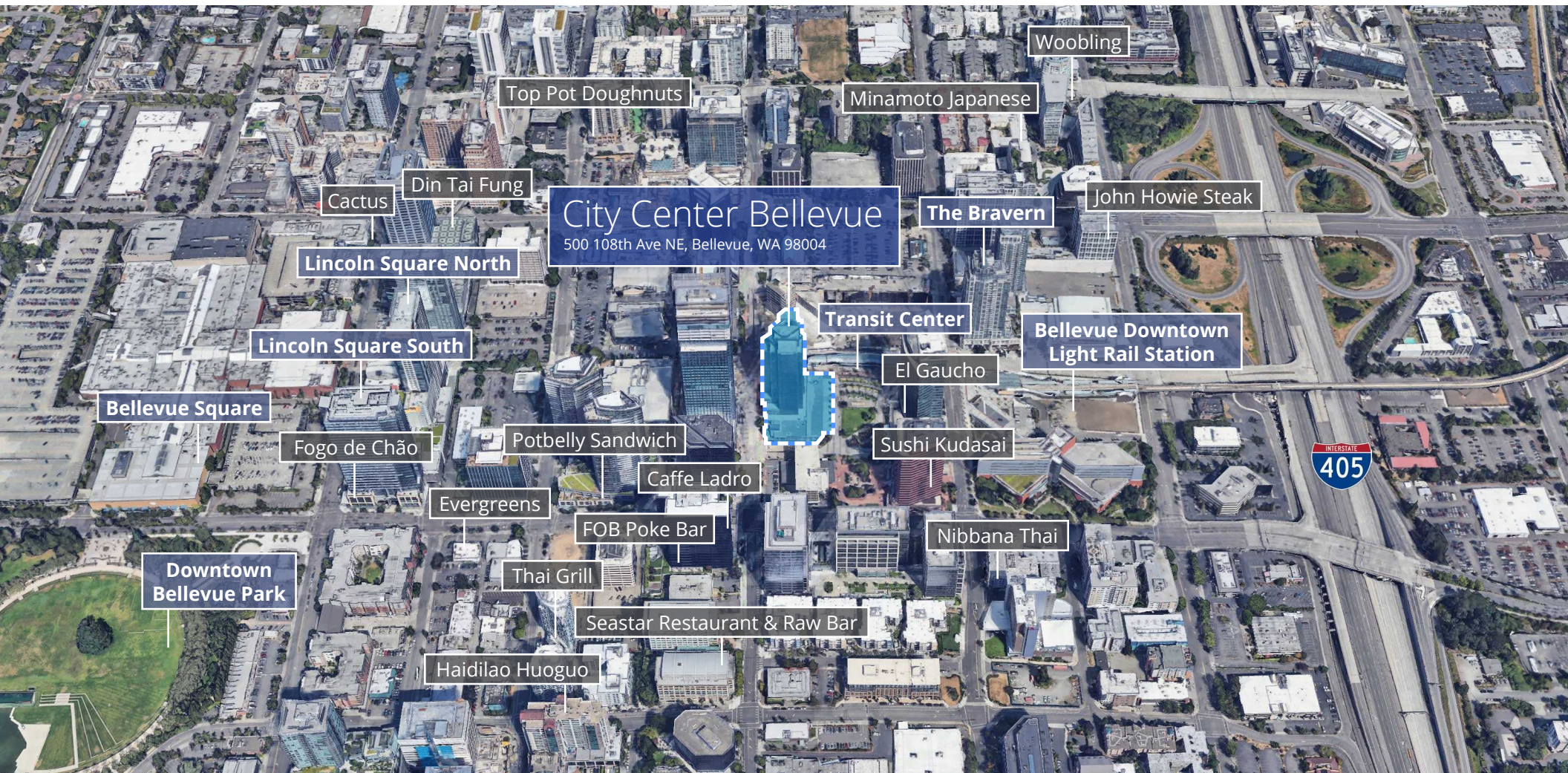


**Connor McClain**  
Senior Vice President  
Mob +1 425 785 5660  
connor.mcclain@colliers.com

**Jeff Chaney, SIOR**  
Executive Vice President  
Mob +1 425 468 0703  
jeff.chaney@colliers.com

**Joe Conner**  
Senior Associate  
Mob +1 206 223 1423  
joe.conner@colliers.com





**Connor McClain**  
Senior Vice President  
Mob +1 425 785 5660  
connor.mcclain@colliers.com

**Jeff Chaney, SIOR**  
Executive Vice President  
Mob +1 425 468 0703  
jeff.chaney@colliers.com

**Joe Conner**  
Senior Associate  
Mob +1 206 223 1423  
joe.conner@colliers.com