

FOR LEASE

Owned and Operated by



# South 200th St Industrial Building

2369 South 200th St, SeaTac, WA 98198



±4,650 SF



LEASING INFO  
& CONTACT

**Kent Channing**

(425) 586-5628 / [kchanning@nai-psp.com](mailto:kchanning@nai-psp.com)

**Arie Salomon**

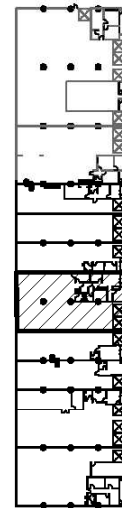
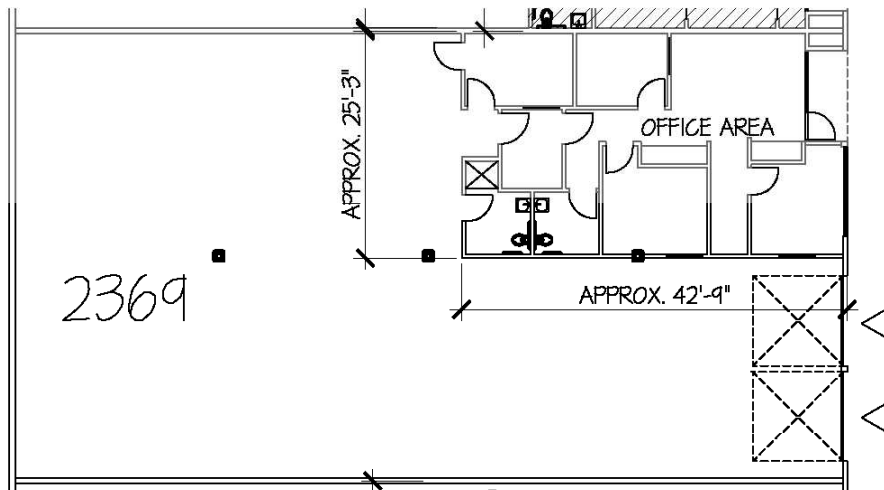
(425) 586-5636 / [asalomon@nai-psp.com](mailto:asalomon@nai-psp.com)



This is not an offer or acceptance of an offer to lease space. A lease will only be offered or made in a written agreement signed by landlord. No representation or warranty of any kind is made by landlord unless set forth in a written definitive lease executed by the landlord.

**OVERVIEW**

4,650 SF  
 1,079 SF Office  
 2 grade level doors  
 16' Clear Height  
 Excellent access to I-5 & SR-509  
 Lease Rate: \$1.15 shell, \$1.25 office add on  
 NNN's: \$0.38  
 Available now



**Key Plan**  
 UPPER LEVEL

- ▶ DOCK HIGH DOOR
- ▷ GRADE LEVEL DOOR

**2369 South 200th Street, Seatac, Washington**  
 SCALE : 1" = 20'-0"      TOTAL AREA: 4,650 S.F.      OFFICE AREA: 1,079 S.F.