

FOR LEASE

Owned and Operated by



# South 200th St Industrial Building

2333 South 200th St, SeaTac, WA 98198



±11,625 SF



LEASING INFO  
& CONTACT

**Kent Channing**

(425) 586-5628 / [kchanning@nai-psp.com](mailto:kchanning@nai-psp.com)

**Arie Salomon**

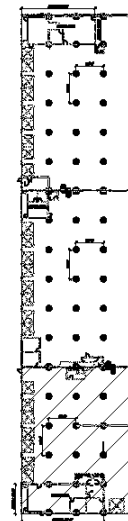
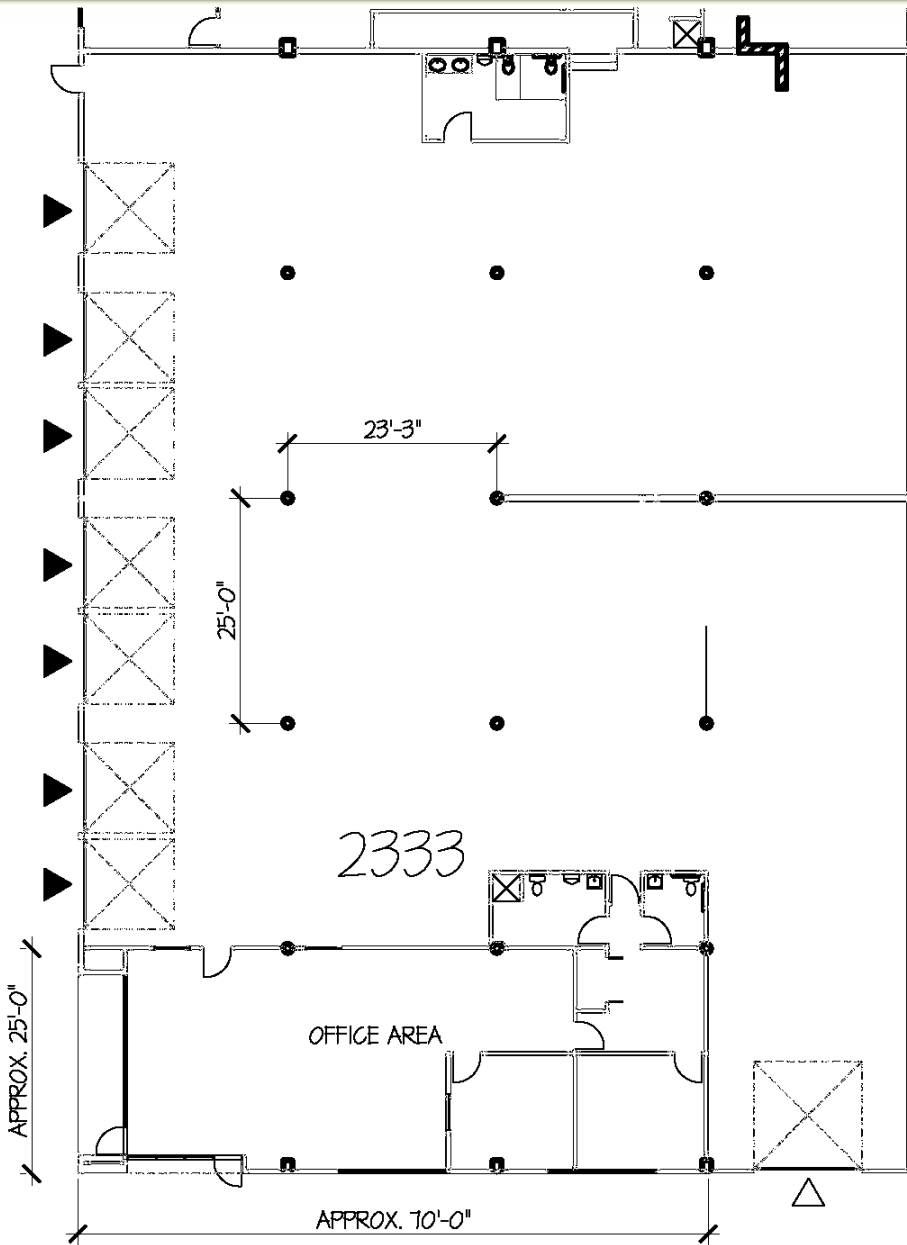
(425) 586-5636 / [asalomon@nai-psp.com](mailto:asalomon@nai-psp.com)



This is not an offer or acceptance of an offer to lease space. A lease will only be offered or made in a written agreement signed by landlord. No representation or warranty of any kind is made by landlord unless set forth in a written definitive lease executed by the landlord.

**OVERVIEW**

11,625 SF (1,968 SF Office)  
 7 Dock high doors, 1 Oversized grade level door  
 16' Clear height  
 Approximately 2,500 SF of fenced yard area  
 Excellent access to I-5 & SR-509  
 \$1.15 shell, \$1.25 office add on, \$0.38 NNNs  
 Available Now



**Key Plan**  
 LOWER LEVEL

- ▶ DOCK HIGH DOOR
- ▷ GRADE LEVEL DOOR